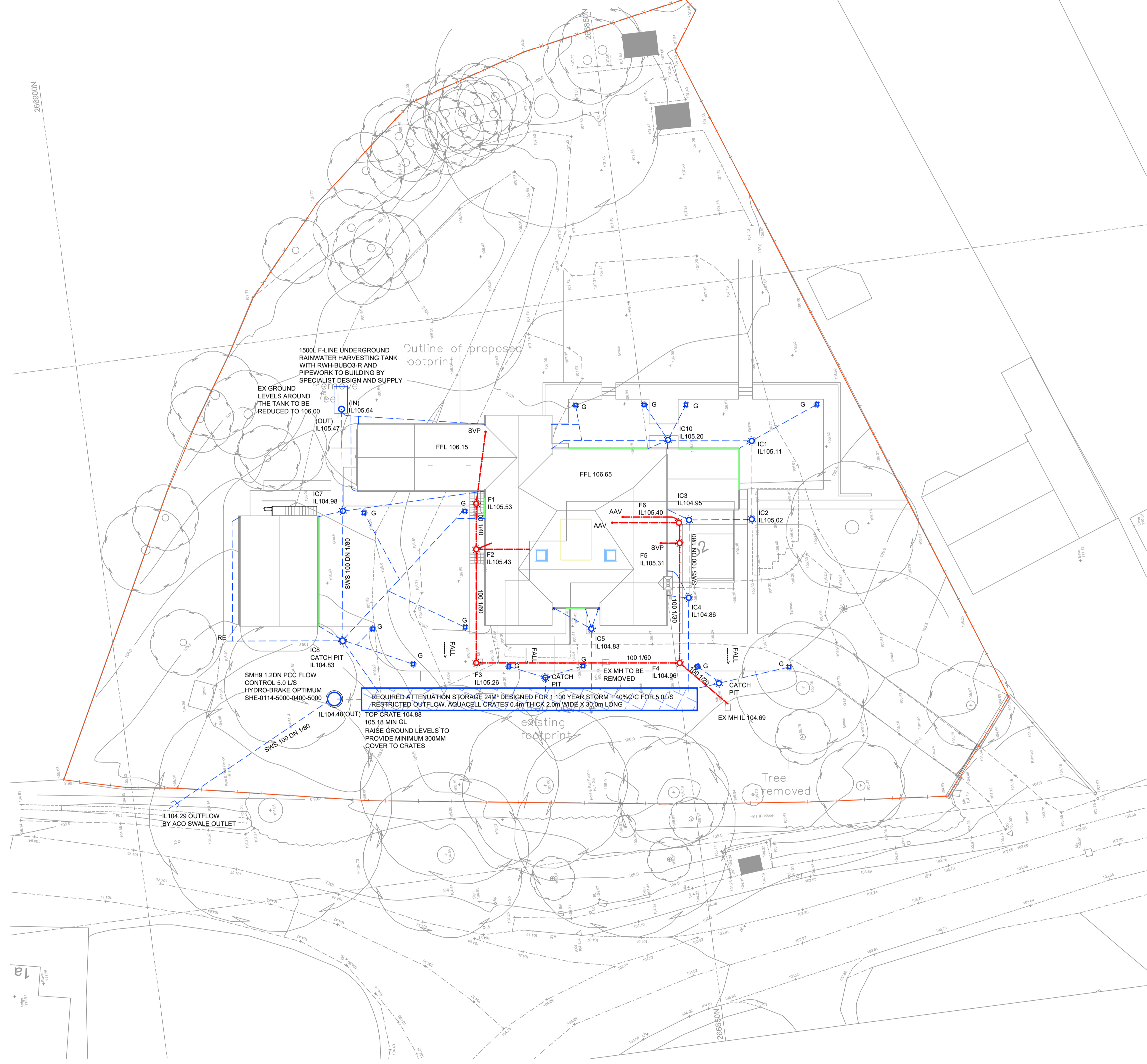


266900N



Notes

1. IF IN DOUBT - ASK !!! DO NOT SCALE
2. THIS DRAWING IS TO BE READ IN CONJUNCTION WITH ALL ARCHITECTS AND ENGINEERS DRAWINGS.
3. ALL WORK TO BE CARRIED OUT IN ACCORDANCE WITH THE RELEVANT BRITISH STANDARDS, CODES OF PRACTICE AND BUILDING PRACTICE.
4. ALL DIMENSIONS TO BE CHECKED PRIOR TO STARTING THE WORKS ON SITE. ANY DISCREPANCIES TO BE REPORTED TO THE ENGINEER IMMEDIATELY.
5. CONTRACTOR TO ASCERTAIN THE LOCATION OF SERVICES ON SITE PRIOR TO STARTING THE WORK.
6. ALL DIMENSIONS FOR CONSTRUCTION ARE TO BE OBTAINED FROM SITE MEASUREMENTS OR ARCHITECTS SETTING OUT DRAWINGS PRIOR TO MANUFACTURE/BUILDING.

CDM 2015 DESIGNER NOTES

IN ADDITION TO THE HAZARDS, AND RISKS NORMALLY ASSOCIATED WITH THE TYPE OF WORK DETAILED ON THIS DRAWING, NOTE THE FOLLOWING SIGNIFICANT RISKS AND INFORMATION.

CONSTRUCTION:

1. N/A

FOR INFORMATION RELATING TO END USE, MAINTENANCE, DEMOLITION, SEE THE HEALTH AND SAFETY FILE.

IT IS ASSUMED THAT ALL WORKS WILL BE CARRIED OUT BY A COMPETENT CONTRACTOR, WHERE APPROPRIATE, TO AN APPROVED METHOD STATEMENT.

KEY DRAINAGE:

- PROPOSED FOUL WATER DRAIN (1000 U.N.O.)
- PROPOSED SURFACE WATER DRAIN (1000 U.N.O.)
- PROPOSED MANHOLE TYPE 1 (8000 MAX. POLYPROPYLENE)
- PROPOSED MANHOLE - TYPE 1 (4500 MAX. POLYPROPYLENE)
- INSPECTION CHAMBER MANHOLE TYPE (4500 MAX. POLYPROPYLENE)
- YARD GULLY + 100mmØ CONNECTION
- SLOT DRAIN
- INLET HOPPER (WITH RWP)
- CELLULAR STORAGE SYSTEM WITH IMPERMEABLE MEMBRANE SURROUND

P3	RAINWATER HARVESTING TANK ADDED	SZ	06.01.22
P2	FW DRAINAGE ADDED	SZ	04.01.22
P1	FIRST ISSUE.	SZ	29.11.21

THIS DRAWING IS THE PROPERTY OF DAVID SMITH ASSOCIATES. IT MUST NOT BE REPRODUCED, COPIED NOR ITS CONTENTS DIVULGED WITHOUT THEIR PERMISSION.
©DAVID SMITH ASSOCIATES

ISSUE **PRELIMINARY**

CLIENT
SHIEL DEVELOPMENTS LTD

CONTRACT
**52 WELLINGBOROUGH ROAD
MEARS, ASHBY, NN6 0DZ**

TITLE
SITE DRAINAGE LAYOUT

ARCHITECT
SAMRAI ASSOCIATES

DRAWN	CHECKED	DATE	SCALE
SZ	BT	NOV '21	1:200 @A1

David Smith Associates
Consulting Structural & Civil Engineers

Tel: (01604)782620 8 Duncan Close
Email: northampton@dsagroup.co.uk Moulton Park
Website: www.dsagroup.co.uk Northampton NN3 6WL

DRAWING NUMBER	21	46379/50	REVISION	P3
----------------	----	----------	----------	----