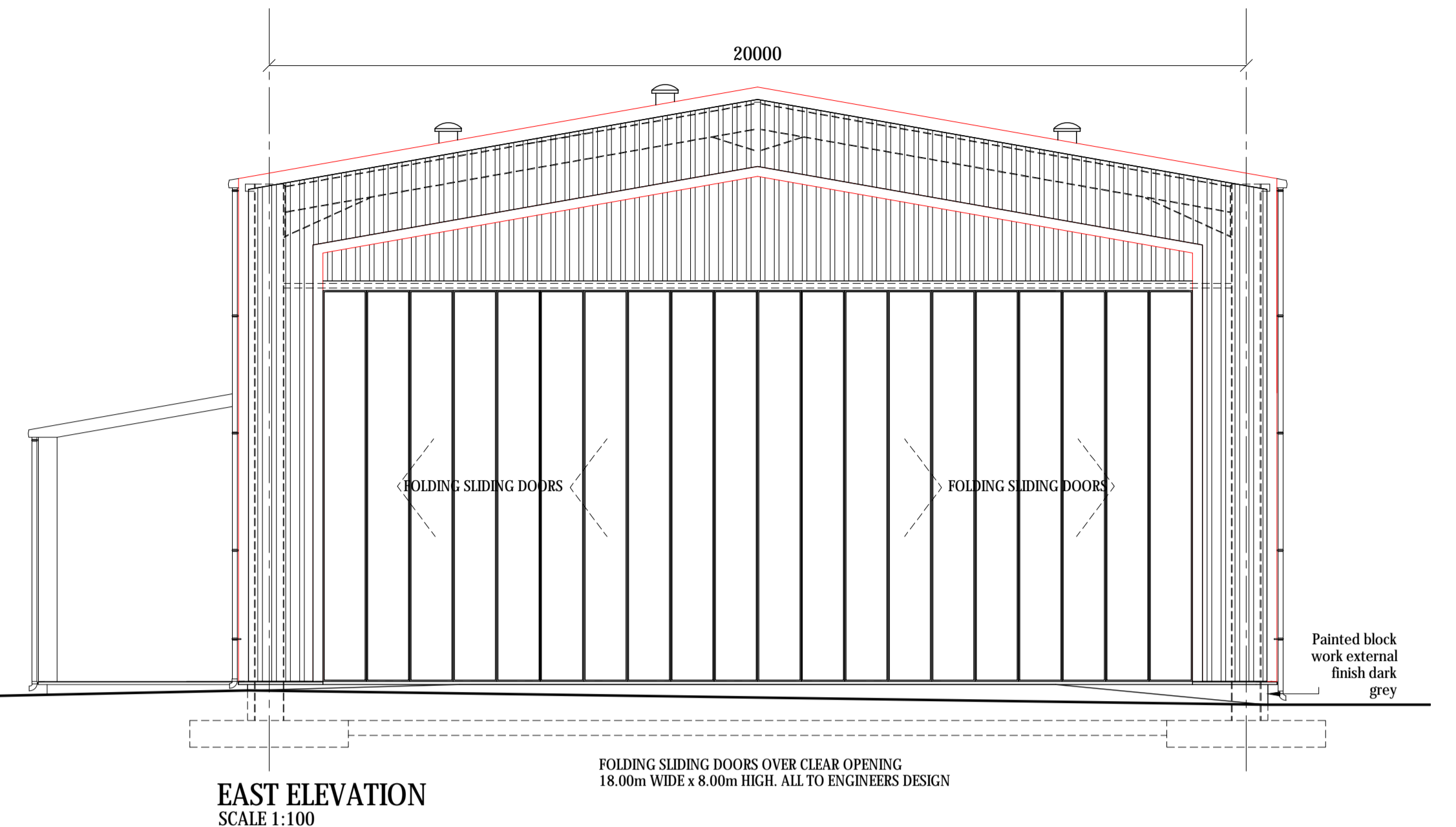
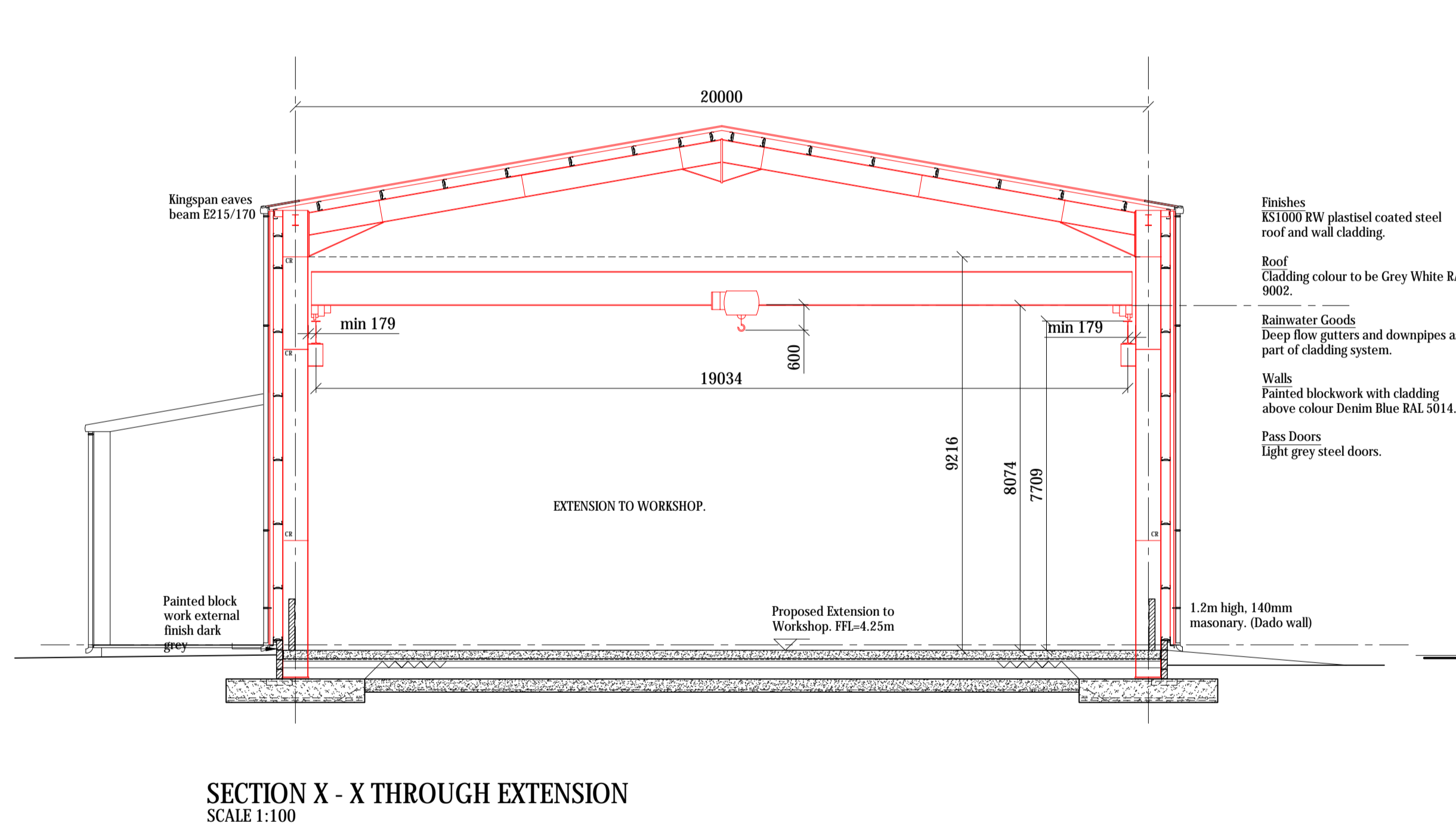


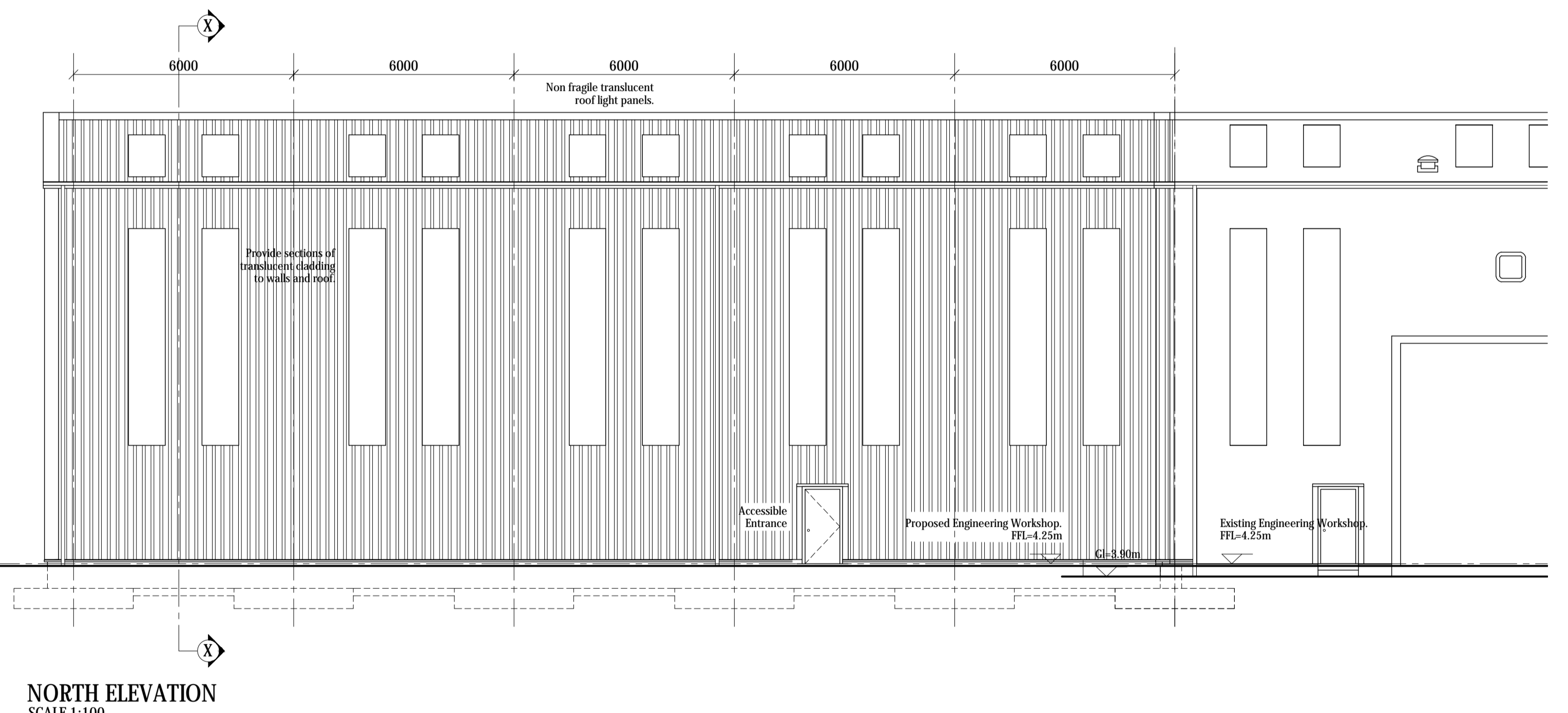
**SOUTH ELEVATION**  
SCALE 1:100



**EAST ELEVATION**  
SCALE 1:100



**SECTION X - X THROUGH EXTENSION**  
SCALE 1:100



**NORTH ELEVATION**  
SCALE 1:100

**BRICK AND BLOCKWORK:**

The blockwork used shall have a minimum crushing strength of: 100mm thick = 10N/mm<sup>2</sup>, 140mm thick = 10N/mm<sup>2</sup> and 215mm thick = 10N/mm<sup>2</sup>. All bricks, blocks used below dpc level shall be dense concrete brick/block having a minimum density of 1500 kg/m<sup>3</sup>. Mortar strength designation (M) as per in PD 6697:2010. Generally the centre to centre of expansion joints in concrete block walls to be 6.0m max, in concrete brick walls to be 7.5m max and in clay brick walls to be 9m max. The exact position of these joints are subject to the architects approval.

**DPC:**

DPC to be a minimum 150mm above ground level and installed in accordance with manufacturers details and installation instructions. Note - all timber that contacts with masonry to be wrapped with or protected by 1200 gauge polythene dip.

**GROUND FLOOR CONSTRUCTION: CONCRETE SLAB:**

Epoxy resin floor finish to be client on solid floor min 200mm thk C35 concrete laid smooth with non-slip steel float finish and dust inhibitor. Floors to have A142 anti-cracking reinforcement 50mm from top surface. Alternatively polypropylene fibres used in accordance with manufacturer's recommendation maybe used for anti crack reinforcement. Structural concrete slab to be steel floor finished +/- 5mm over a 3.0m straight edge. Construction joints to be confirmed by engineer. Isolation joints should be formed between the floor slab and the walls using 20mm polyurethane insulation. All floors shall incorporate R/W gas seal 40mm on the sand blinding. Membrane to be lapped with DPC in accordance with manufacturers details. Type 1 hardcore base shall be laid minimum 150mm thick, compacted with vibrating or heavy roller and topped with fine sand blinding. Hardcore to be laid on firm undisturbed ground. Where undisturbed subgrade is more than 275mm below structural finished floor level, hardcore is to be built up in compacted 150mm layers.

**EXTERNAL WALLS:**

Cladding above dpc to be 80mm KS 1000 RW composite cladding colour Denim Blue RAL 5014 with sections of non fragile translucent panels, complete with all fixings, trims, flashings, proprietary cavity barriers at opening/door positions in accordance with manufacturers instructions. Cladding on galvanised cold-formed proprietary steel purlin system at max 1.5m c/c. Cladding fixed to rails and primary steel structure to cladding manufacturer's design.

**ROOF:**

80mm insulated composite cladding colour Grey White RAL 9002 with sections of non fragile translucent panels, complete with all fixings, trims, flashings, proprietary cavity barriers at opening all in accordance with manufacturers instructions. Cladding on galvanised cold-formed proprietary steel purlin system at max 1.5m c/c with additional purlins at eaves and ridge locations. Access to roof to be on a very infrequent basis. Access to be provided by a mobile platform or zip-up scaffolding in accordance with the guidance in HSE publications. Precautions should be taken to limit the hazards presented by fragile roof surfaces. There should be a clear visible warning sign identifying any part of a roof that is not capable of bearing a concentrated load of 0.9 kN on a 130mm by 130mm square. The visible warning should indicate the relevant hazard sign from BS 5499-Part 5:2002. Rooflights to be Kingspan DLTR 1.6 Clear with 75mm end laps and are designated class AA.

**SERVICES THRU ROOF AND WALLS:**

All vents, extracts & pipework taken thro roof and walls to have suitable flashings at junction.

**EXTERNAL DRAINAGE:**

All drains laid to sight & satisfaction of local authority inspector. All underground pipework to be surrounded in 5-10mm pea gravel or granular material. All 100mm upvc drains laid to min. 1:60 fall. Rodding eyes positioned at changes in direction. Drains to be laid min. 1.0m from building where possible and backfilled with granular material. Drains less than 1.0m must be above foundation level. Walls to be lintelled where drains pass through. Manual entry into a drain or sewer should be kept to a minimum, remote equipment should be used where possible. Roddings eyes to terminate a finished ground level and be housed in a pre cast concrete chamber. All drainage in marley upvc or e/a. All drains to be surrounded in 5-10mm pea gravel. All drainage outside of building to be in accordance with BS EN 12056-3: 1997 (amendment 2), BS EN 752-4:1998 and BS EN 1610: 1998.

**RAINWATER SYSTEMS:**

All surface water drainage to be tested in accordance with BS EN 1610: 1998 and constructed and installed in accordance with the recommendations described in BS EN 12056-3: 2000 & securely fixed in accordance with manufacturers details. Factory made gutter with 100mm black pvc drops tied back to columns. (Positions as indicated on plans) Gutters & Downpipes should be constructed and installed in accordance with the recommendations described in BS EN 12056-3: 2000, & securely fixed in accordance with manufacturers details. Rainwater downpipes complete with access via rodding points on ground level.

**DOORS:**

External doors to be secure by design powder coated grey Aluminium doors. Final exits to be fitted with panic pads to the inside of the door leaf, provided with 1200x1200mm level plate with threshold that does not form a trip hazard and provides ease of access to wheelchair users. All escape doors to be provided with emergency lighting internally and externally above opening. All internal doors to be of timber construction and have 825mm min clear opening width. All glazing below 800mm to be toughened glass. Doors should be tested and certified for security purposes by a notified body as meeting a recognised standard for security such as BS PAS 24: 2007 for doorsets. To ensure a robust installation, fixing of a doorset should be in accordance with the recommendations given in section 8 of BS 8213-4: 2007; or manufacturer's written instructions where these meet or exceed the recommendation within this British Standard. All new external doors should be provided with draught stripping. All external doors to open in the direction of escape.

**ACCESSIBLE THRU ROOF AND ACCESSIBLE ROUTES:**

Accessible parking to be constructed where shown on a road surface that is level (with a gradient of not more than 1 in 50), and not more than 45m from a common entrance. Spaces to be clearly marked with the international symbol of access, and provided access to an accessible route. Accessible route provided to the principal entrance from the accessible car parking spaces. An accessible route should be level with a gradient of not more than 1 in 50, or gently sloping, which is a gradient of more than 1 in 50 and not more than 1 in 20, or ramped, with a gradient of more than 1 in 20 and not more than 1 in 12. The cross fall on any part of an accessible route should not exceed 1 in 40. Gently sloping gradients should be provided with level rest points of not less than 1.5m in length, at intervals dependent on the gradient of the sloping surface. This should follow the same relationship given for ramp flights, e.g. up to 20m apart for a slope of 1 in 30, 30m for a slope of 1 in 40 and so on. Where a rise of more than 300mm occurs a stepped means of access should be provided. The surface of an accessible route should be firm, uniform and of a material and finish that will permit ease in manoeuvring. It should provide a degree of traction that will minimise the possibility of slipping taking into account both anticipated use and environmental conditions. The surface of an accessible route, whether composed of modular paving units, formless materials such as tarmac, or another durable material, should have a profile that will not offer a trip hazard or result in standing water. It should be installed in accordance with a code of practice relevant to the material, where such exists. Surface elements such as drainage gratings and manhole covers should be of a type that will not create a trip or entrapment hazard. The length of an accessible route to an accessible entrance of a building should be limited to 45m. Any part of an accessible route to a building from accessible parking space should have a minimum surface width of 1.8m.

**Finishes**  
KS1000 RW plastisel coated steel roof and wall cladding.  
**Walls**  
Painted blockwork with cladding above colour Denim Blue RAL 5014.  
**Roof**  
Cladding colour to be Grey White RAL 9002.  
**Pass Doors**  
Light grey steel doors.  
**Folding Doors**  
Polyester powder coated aluminum colour BS 10A05 goosewing grey  
**Rainwater Goods**  
Deep flow gutters and downpipes as part of cladding system.  
Gross internal floor area 565m<sup>2</sup>.

**Finishes**  
KS1000 RW plastisel coated steel roof and wall cladding.  
**Roof**  
Cladding colour to be Grey White RAL 9002.  
**Rainwater Goods**  
Deep flow gutters and downpipes as part of cladding system.  
**Walls**  
Painted blockwork with cladding above colour Denim Blue RAL 5014.  
**Pass Doors**  
Light grey steel doors.

| rev            | date  | description | by       | chkd by      |
|----------------|---|-------------|----------|--------------|
| Client:        | Dales Marine Services Ltd                                     |             |          |              |
| Project:       | Extension to Engineering Building, Garvel Dry Dock, Greenock. |             |          |              |
| Drawing Title: | Proposed Elevations & Section                                 |             |          |              |
| Stage:         | PLANNING  | Date:       | DEC 2021 |              |
| Project No:    | 4830  | Drawing No: | PL/04    | Revision: A1 |
| Scale:         | 1:100   | Drawn:      | jpr      | Checked:     |

**McADAM DESIGN SCOTLAND LTD**  
Commercial and Residential Chartered Architects

70 King Street, Peterhead AB42 1QJ Tel: 01779 475157  
Commerce House, Commerce Street,  
Aberdeen, AB11 5FN Tel: 01224 330660  
info@mcadamdesign.com www.mcadamdesign.com

All drawings remain copyright of McAdam Design (Scotland) Ltd and must not be altered or reproduced without written consent. We take no responsibility for any misuse of the drawings by any third party resulting in infringement of our copyright.