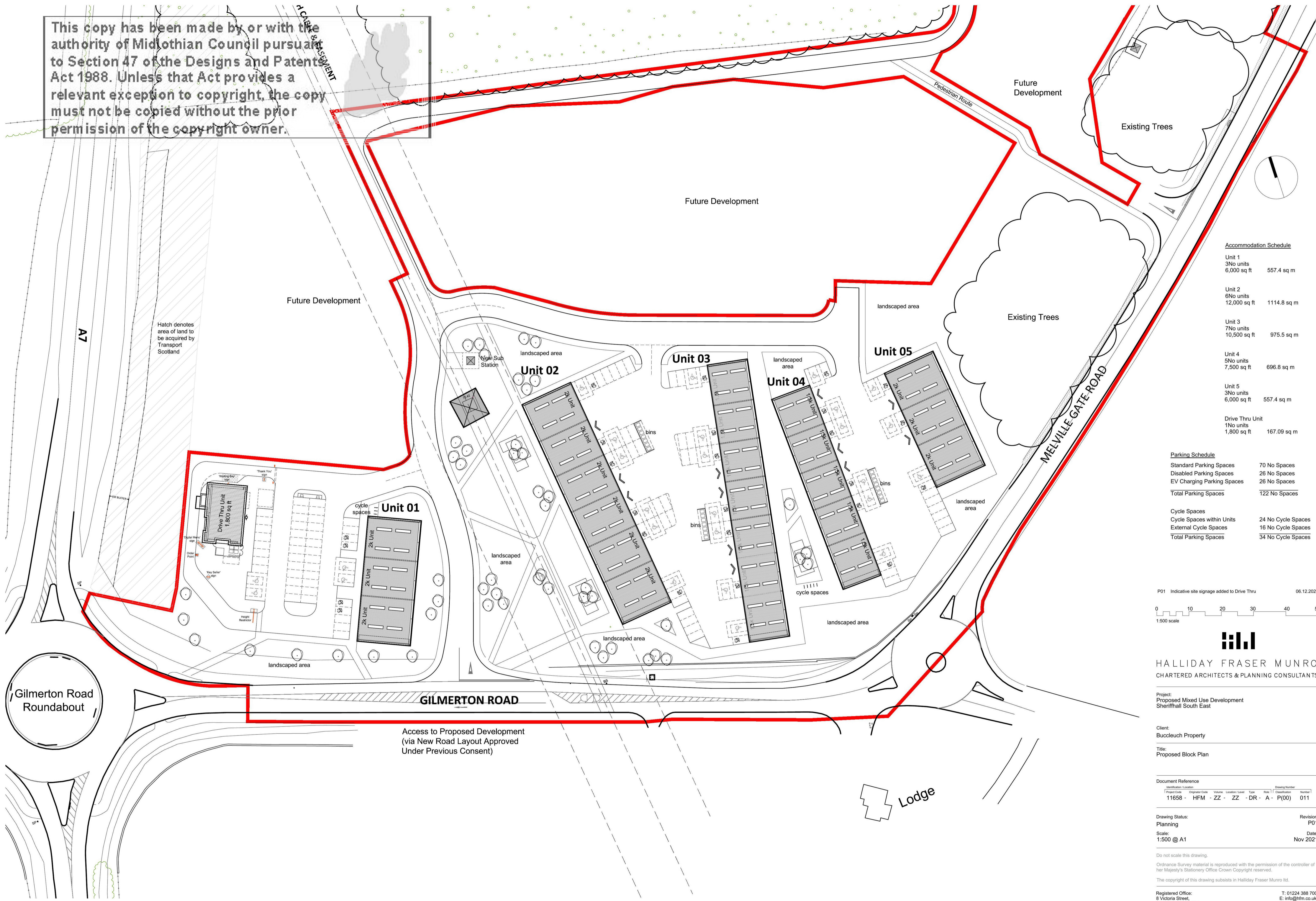


This copy has been made by or with the authority of Midlothian Council pursuant to Section 47 of the Designs and Patents Act 1988. Unless that Act provides a relevant exception to copyright, the copy must not be copied without the prior permission of the copyright owner.



Accommodation Schedule

Unit 1	3No units	6,000 sq ft	557.4 sq m
Unit 2	6No units	12,000 sq ft	1114.8 sq m
Unit 3	7No units	10,500 sq ft	975.5 sq m
Unit 4	5No units	7,500 sq ft	696.8 sq m
Unit 5	3No units	6,000 sq ft	557.4 sq m
Drive Thru Unit	1No units	1,800 sq ft	167.09 sq m

Parking Schedule

Standard Parking Spaces	70 No Spaces
Disabled Parking Spaces	26 No Spaces
EV Charging Parking Spaces	26 No Spaces
Total Parking Spaces	122 No Spaces
Cycle Spaces	
Cycle Spaces within Units	24 No Cycle Spaces
External Cycle Spaces	16 No Cycle Spaces
Total Parking Spaces	34 No Cycle Spaces

P01 Indicative site signage added to Drive Thru 06.12.2021
 0 10 20 30 40 50m
 1:500 scale



HALLIDAY FRASER MUNRO
 CHARTERED ARCHITECTS & PLANNING CONSULTANTS

Project:
 Proposed Mixed Use Development
 Sheriffhall South East

Client:
 Buccleuch Property

Title:
 Proposed Block Plan

Document Reference

Revision	Description	Date
1	Issue for Planning	06.12.2021

Drawing Status: **Planning** Revision: **P01**
 Scale: **1:500 @ A1** Date: **Nov 2021**

Do not scale this drawing.
 Ordnance Survey material is reproduced with the permission of the controller of her Majesty's Stationery Office Crown Copyright reserved.
 The copyright of this drawing subsists in Halliday Fraser Munro Ltd.

Registered Office: 8 Victoria Street, Aberdeen, AB10 1XB
 T: 01224 388 700
 E: info@hfm.co.uk
 W: hfm.co.uk

Gilmerton Road Roundabout

Access to Proposed Development
 (via New Road Layout Approved
 Under Previous Consent)

Lodge