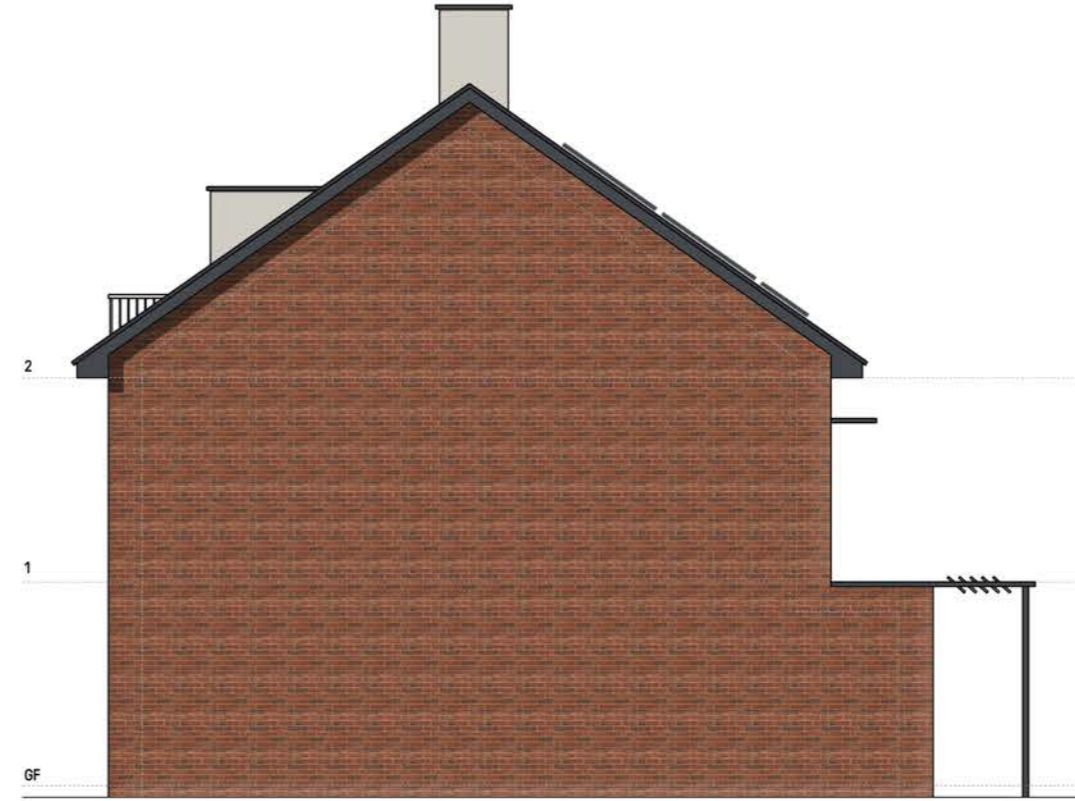




SIDE ELEVATION



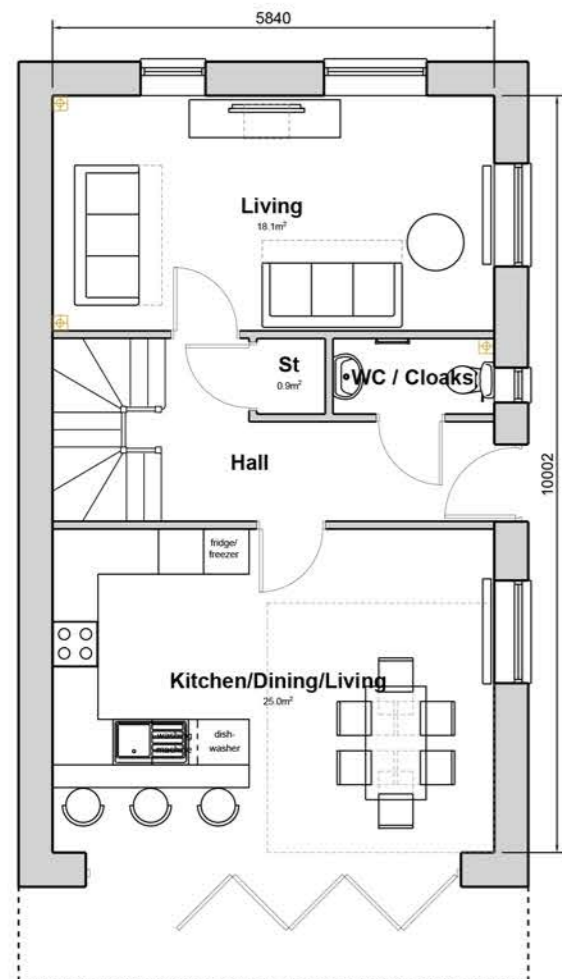
FRONT ELEVATION



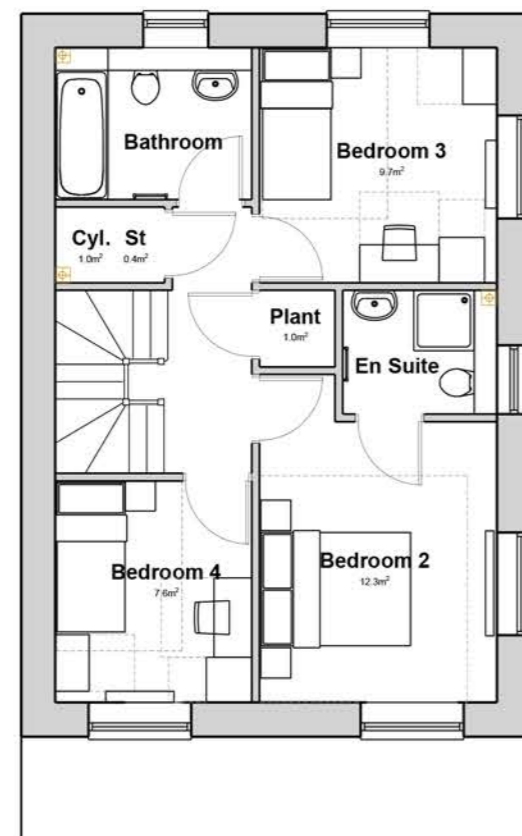
SIDE ELEVATION



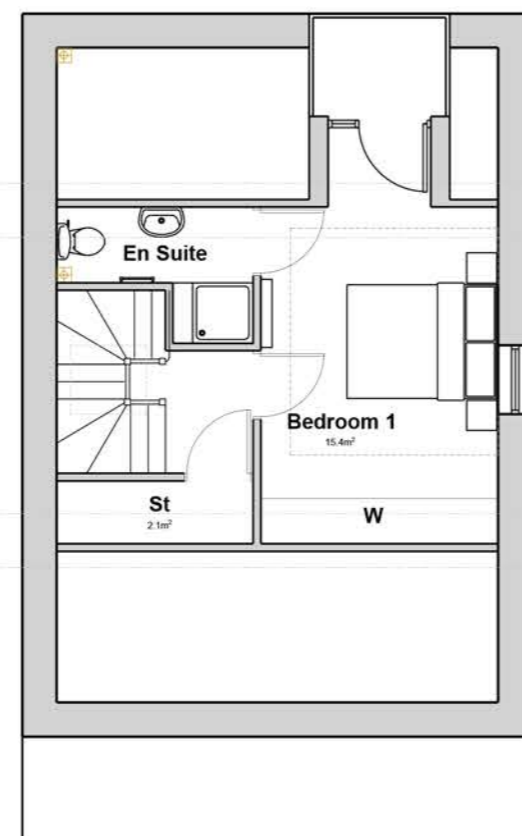
REAR ELEVATION



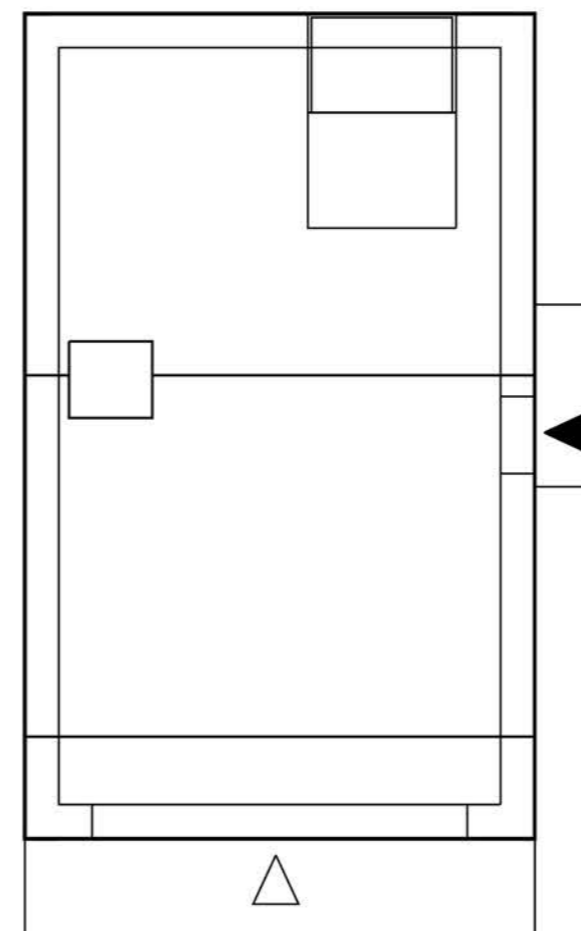
GROUND FLOOR - 58.4m²



FIRST FLOOR - 50.5m²



SECOND FLOOR - 27.5m²



ROOF PLAN

HOUSETYPE CN4C
4 Bed / 6 Person
Area: 136.4m² (1468sqft)

MATERIAL SCHEDULE

1. Red Roof Tile
2. Grey Roof Tile
3. Red Brick
4. Projecting Brick Band
5. Dogtooth Banding
6. Dogtooth Panel
7. Brick Pier
8. PPC Aluminium Projecting Window Framing
9. Fibre Cement Panelling
10. Metal Balcony Railings
11. UPVC Dark Grey Windows
12. Black Rainwater Goods
13. Spandrel Glazing Panel
14. Obscure Glazing
15. UPVC Dark Grey External Door
16. Light Coloured PPC Aluminium Porch / Canopy
17. Dark Grey PPC Aluminium Porch / Canopy
18. Dark Grey PPC Aluminium Capping to Parapet Wall
19. Decorative Angled Brickwork
20. Dark Grey Fascia
21. Red Brick Soldier Course
22. Pergola with integrated solar shading
23. Solar Shading
24. Metal Louvre
25. Render

Notes
- Copyright in this drawing remains the property of BM3 Architecture Limited.
- Do not scale this drawing. Work to figured dimensions only.
- Contractors and consultants are to advise BM3 Architecture Limited of any discrepancies.

Revision
- First Issue
A Layout amended to accommodate dormer at front

Date	By	Chkd
01.09.21	LM	IF
16.09.21	LM	IF

Project
LONDON ROAD
Shrewsbury

Drawing
Carbon Neutral Units
House Type CN4C



Scale	Dated	Job No.	Drawing No.	Drawn by	Checked	CISb Element	Revision
1:100 @ A2	20.08.21	71328	D14	LM	IF	FEASIBILITY	A