



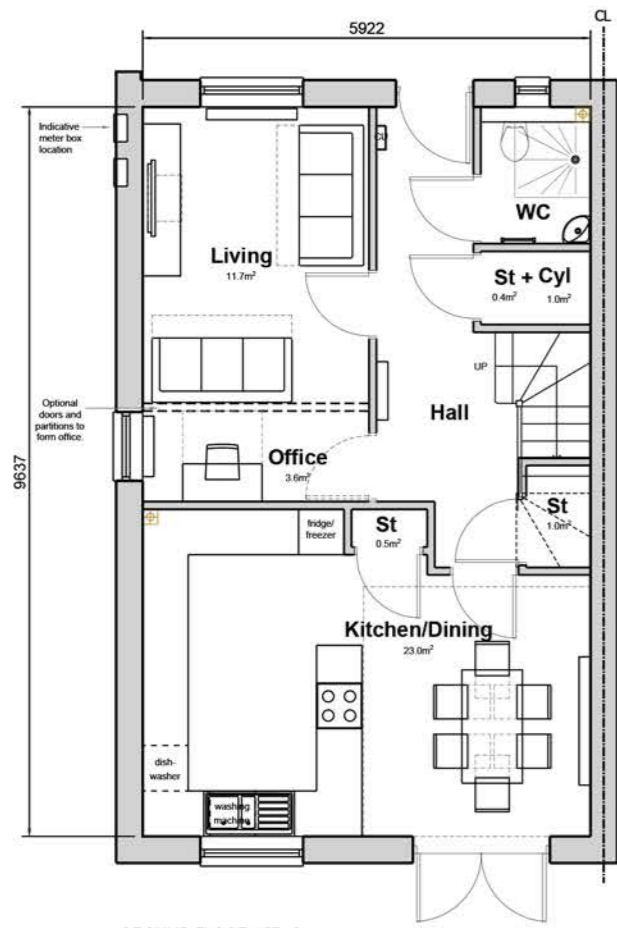
FRONT ELEVATION



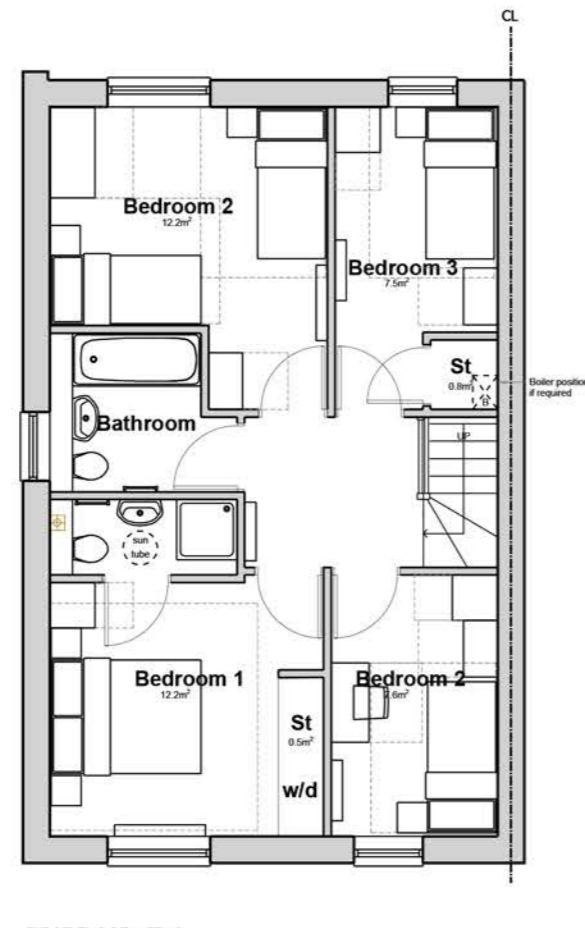
REAR ELEVATION



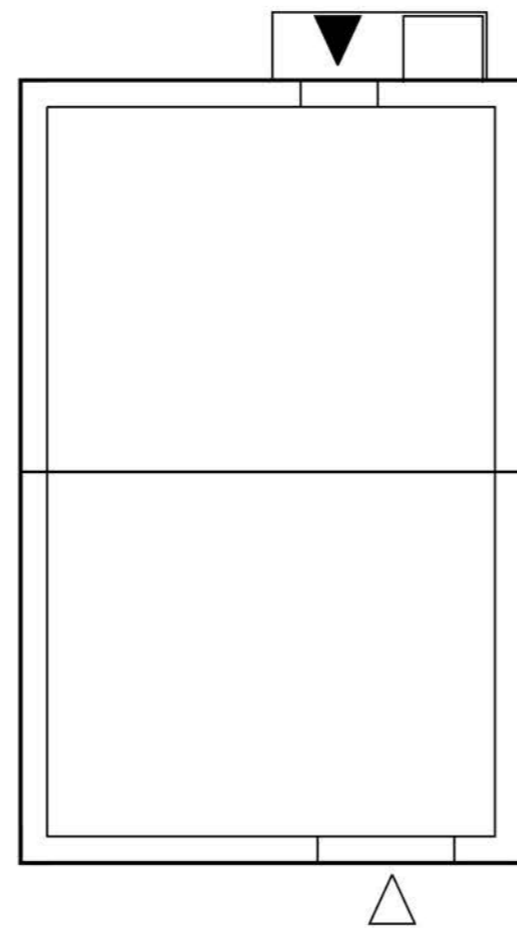
SIDE ELEVATION



GROUND FLOOR - 57m²



FIRST FLOOR - 57m²



HOUSETYPE 4B
4 Bed / 6 Person
Area: 114m² (1227sqft)

MATERIAL SCHEDULE

1. Red Roof Tile
2. Grey Roof Tile
3. Red Brick
4. Projecting Brick Band
5. Dogtooth Banding
6. Dogtooth Panel
7. Brick Pier
8. PPC Aluminium Projecting Window Framing
9. Fibre Cement Panelling
10. Metal Balcony Railings
11. UPVC Dark Grey Windows
12. Black Rainwater Goods
13. Spandrel Glazing Panel
14. Obscure Glazing
15. UPVC Dark Grey External Door
16. Light Coloured PPC Aluminium Porch / Canopy
17. Dark Grey PPC Aluminium Porch / Canopy
18. Dark Grey PPC Aluminium Capping to Parapet Wall
19. Decorative Angled Brickwork
20. Dark Grey Fascia
21. Red Brick Soldier Course
22. Pergola with integrated solar shading
23. Solar Shading
24. Metal Louvre
25. Render

PRELIMINARY

Notes
- Copyright in this drawing remains the property of BM3 Architecture Limited.
- Do not scale this drawing. Work to figured dimensions only.
- Contractors and consultants are to advise BM3 Architecture Limited of any discrepancies.

Revision
A - First Issue

Date
05.10.21

By
LM

Chkd
IF

Project
London Road
SHREWSBURY

Drawing
Proposed Housetype 4B

Client
Cornovii
Developments



Scale 1:100@A2	Dated 05.10.21	Job No. 71417	Drawing No. D24	Drawn by LM	Checked IF	CISb Element	Revision A
-------------------	-------------------	------------------	--------------------	----------------	---------------	--------------	---------------