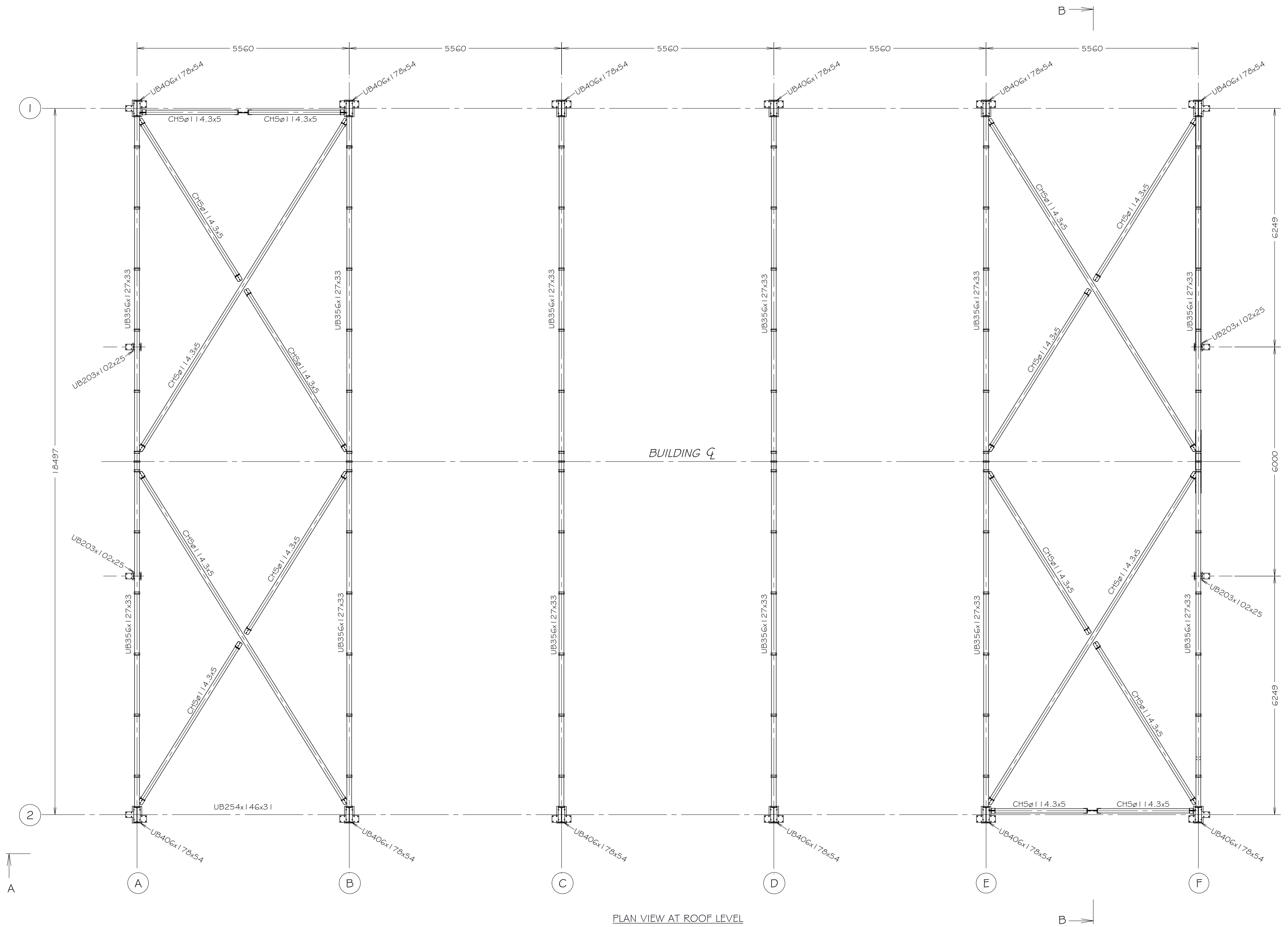


PLAN VIEW AT SSL LEVEL

C				F			
B				E			
A	FIRST ISSUE	PJL	29.11.21	D			
REVISION				REVISION			
HISTORY				HISTORY			

CONFIDENTIAL
 THIS DRAWING IS PROPERTY
 OF UNIVERSAL STEEL LTD.
 DO NOT COPY OR REPRODUCE
 WITHOUT PRIOR WRITTEN
 PERMISSION

FINISH	ZINC PHOSPHATE PRIMER	TITLE	STEEL FRAME ARRANGEMENT		
MATERIAL	M/STEEL S355	PROJECT	WOOLSHOTS FARM -DRYING BARN		
THIRD ANGLE PROJECTION		JOB No	US-208	DRAWING No	US-208-001
		REV	A	1 of 6	

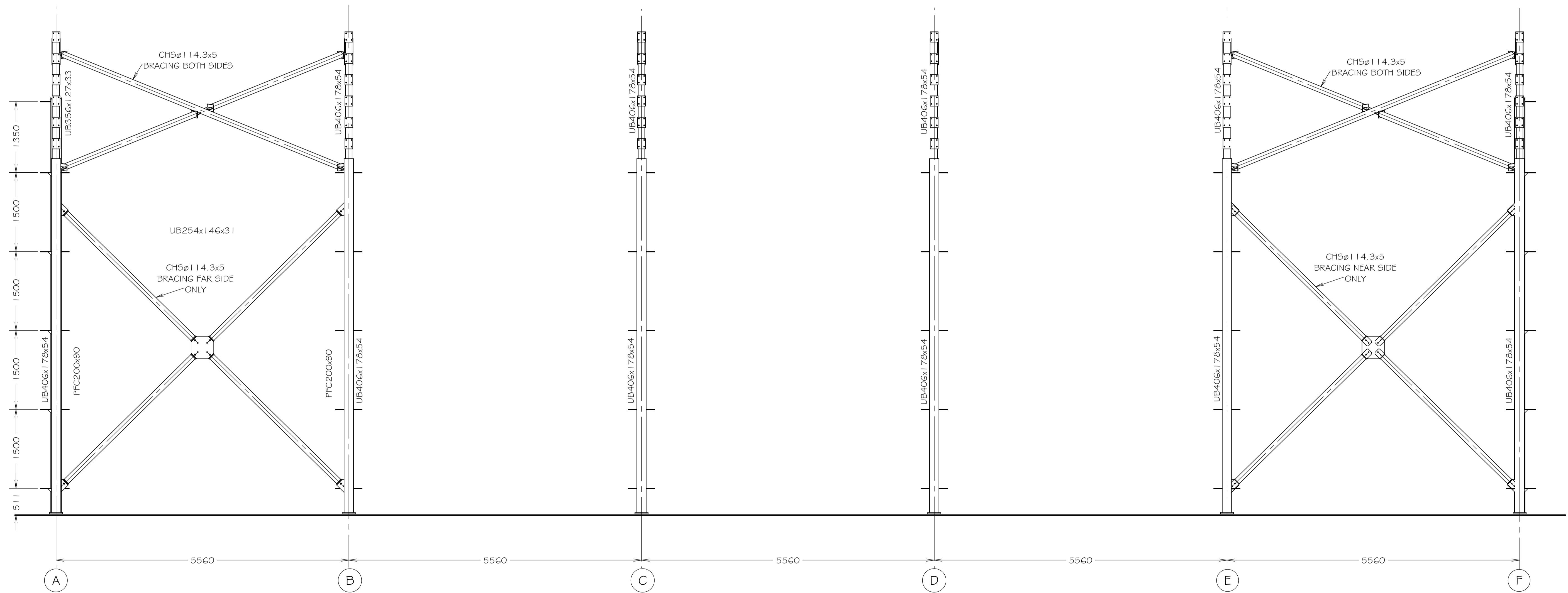


PLAN VIEW AT ROOF LEVEL

C				F			
B				E			
A	FIRST ISSUE	PJL	29.11.21	D			
HISTORY				HISTORY			

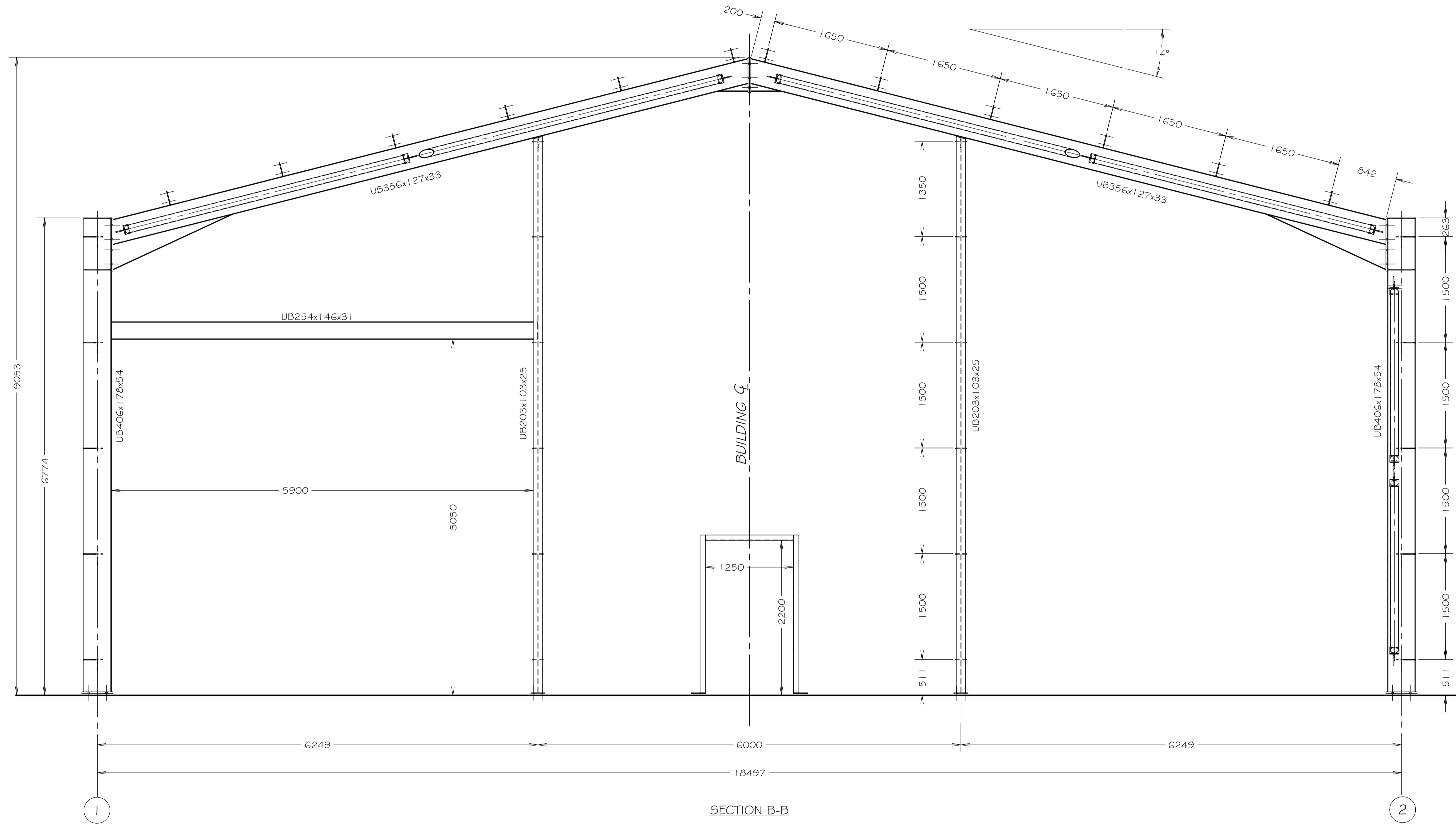
CONFIDENTIAL
THIS DRAWING IS PROPERTY
OF UNIVERSAL STEEL LTD.
DO NOT COPY OR REPRODUCE
WITHOUT PRIOR WRITTEN
PERMISSION

FINISH	ZINC PHOSPHATE PRIMER	TITLE	STEEL FRAME ARRANGEMENT		
MATERIAL	M/STEEL S355	PROJECT	WOOLSHOTS FARM - DRYING BARN		
THIRD ANGLE PROJECTION		JOB No	US-208	DRAWING No	US-208-001
		REV	A		



ELEVATION A-A

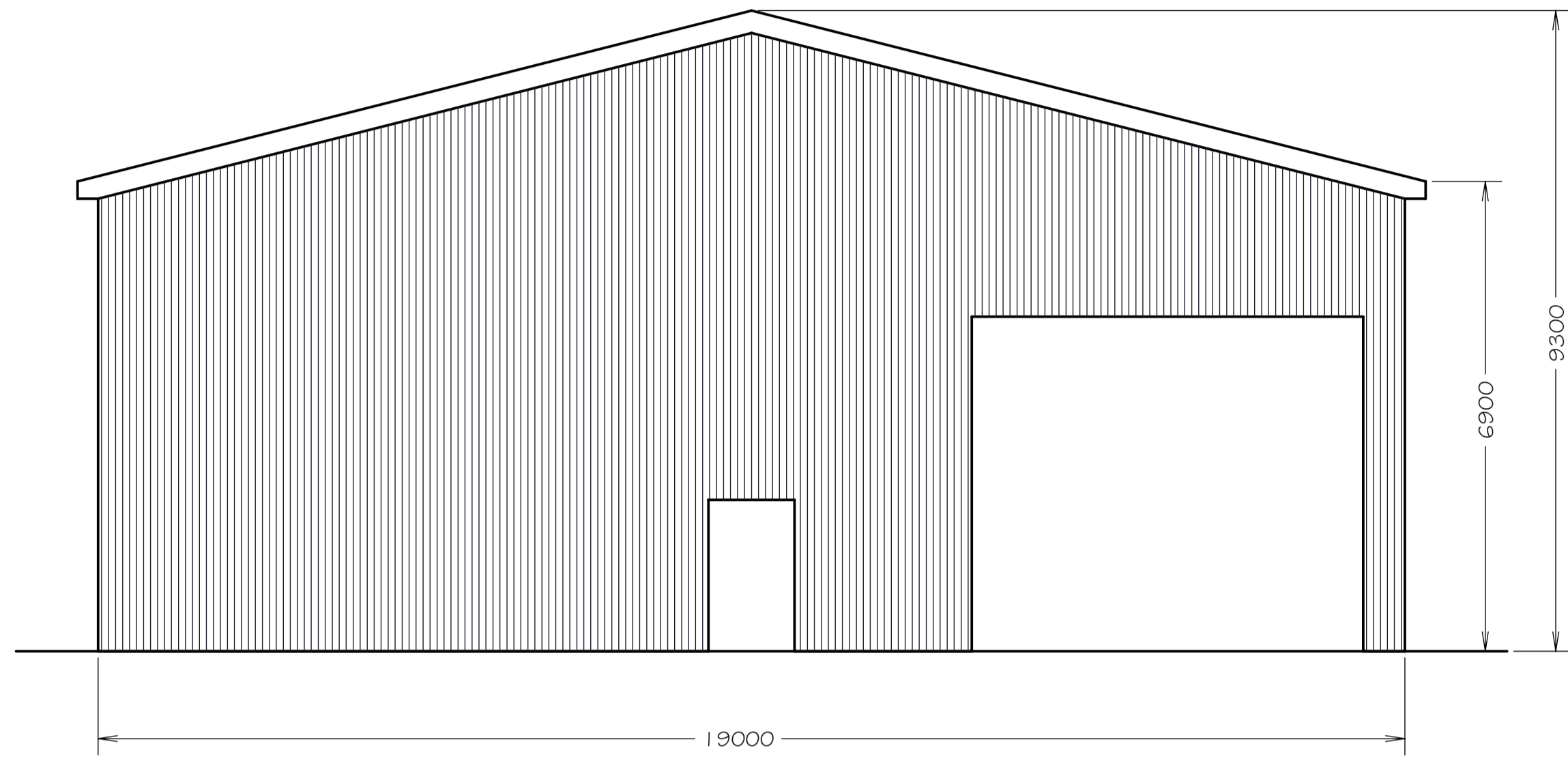
C				F				FINISH	ZINC PHOSPHATE PRIMER	TITLE	STEEL FRAME ARRANGEMENT
B				E				MATERIAL	M/STEEL S355	PROJECT	WOOLSHOTS FARM -DRYING BARN
A	FIRST ISSUE	PJL	29.11.21	D				THIRD ANGLE PROJECTION 		JOB No	US-208
HISTORY				HISTORY				CONFIDENTIAL THIS DRAWING IS PROPERTY OF UNIVERSAL STEEL LTD. DO NOT COPY OR REPRODUCE WITHOUT PRIOR WRITTEN PERMISSION		DRAWING No	US-208-001
REVISION				REVISION				REV A		3 of 6	



C				F			
B				E			
A	FIRST ISSUE	PJL	29.11.21	D			
HISTORY				HISTORY			

CONFIDENTIAL
 THIS DRAWING IS PROPERTY
 OF UNIVERSAL STEEL LTD.
 DO NOT COPY OR REPRODUCE
 WITHOUT PRIOR WRITTEN
 PERMISSION

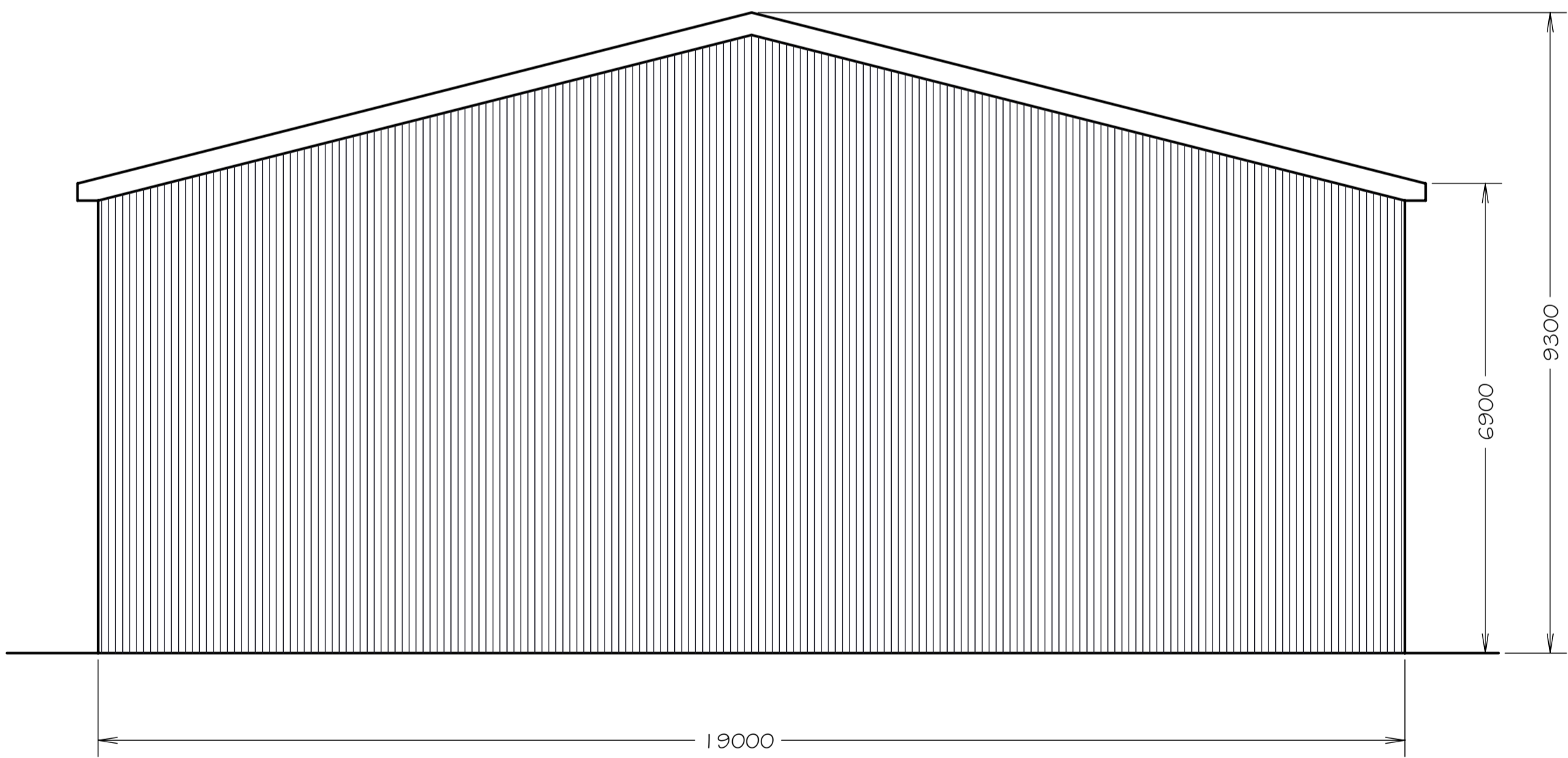
FINISH	ZINC PHOSPHATE PRIMER	TITLE	STEEL FRAME ARRANGEMENT		
MATERIAL	M/STEEL S355	PROJECT	WOOLSHOTS FARM -DRYING BARN		
THIRD ANGLE PROJECTION		JOB No	US-208	DRAWING No	US-208-001
		REV	A		4 of 6



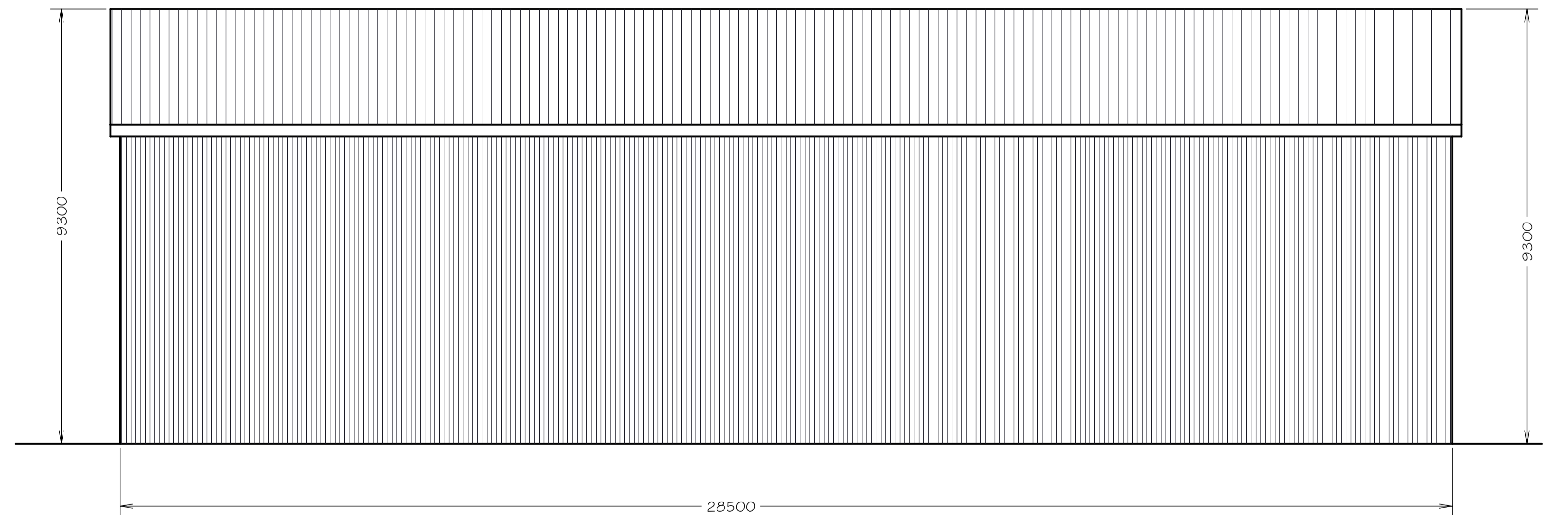
END ELEVATION 1



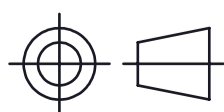
SIDE ELEVATION 1

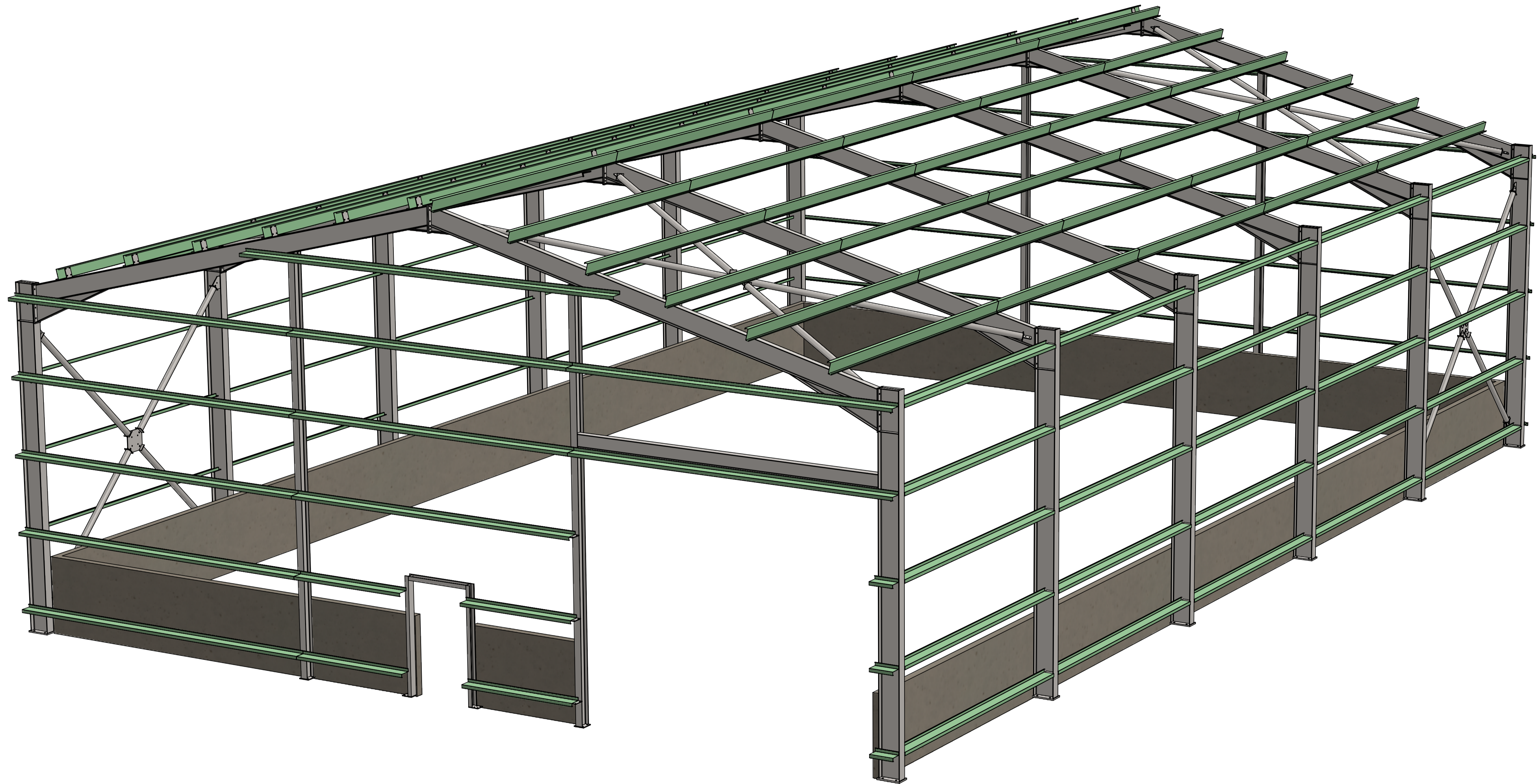


END ELEVATION 2



SIDE ELEVATION 2

C				F				<p>CONFIDENTIAL THIS DRAWING IS PROPERTY OF UNIVERSAL STEEL LTD. DO NOT COPY OR REPRODUCE WITHOUT PRIOR WRITTEN PERMISSION</p>	FINISH	ZINC PHOSPHATE PRIMER	TITLE	STEEL FRAME ARRANGEMENT				
B				E					MATERIAL	M/STEEL S355	PROJECT	WOOLSHOTS FARM -DRYING BARN				
A	FIRST ISSUE	PJL	29.11.21	D								JOB No	US-208	DRAWING No	US-208-001	REV
HISTORY				REVISION				HISTORY				REVISION				
<p>THIRD ANGLE PROJECTION </p>																
<p>5 of 6</p>																



C				F				FINISH	ZINC PHOSPHATE PRIMER	TITLE	STEEL FRAME ARRANGEMENT
B				E				MATERIAL	M/STEEL S355	PROJECT	WOOLSHOTS FARM -DRYING BARN
A	FIRST ISSUE	PJL	29.11.21	D				THIRD ANGLE PROJECTION 		JOB No	US-208
HISTORY				HISTORY				CONFIDENTIAL THIS DRAWING IS PROPERTY OF UNIVERSAL STEEL LTD. DO NOT COPY OR REPRODUCE WITHOUT PRIOR WRITTEN PERMISSION		DRAWING No	US-208-001
REVISION				REVISION						REV	A
										6 of 6	