

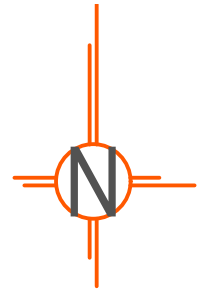
**THE SITE**



Ordnance Survey, (c) Crown Copyright 2021. All rights reserved. Licence number 100022432

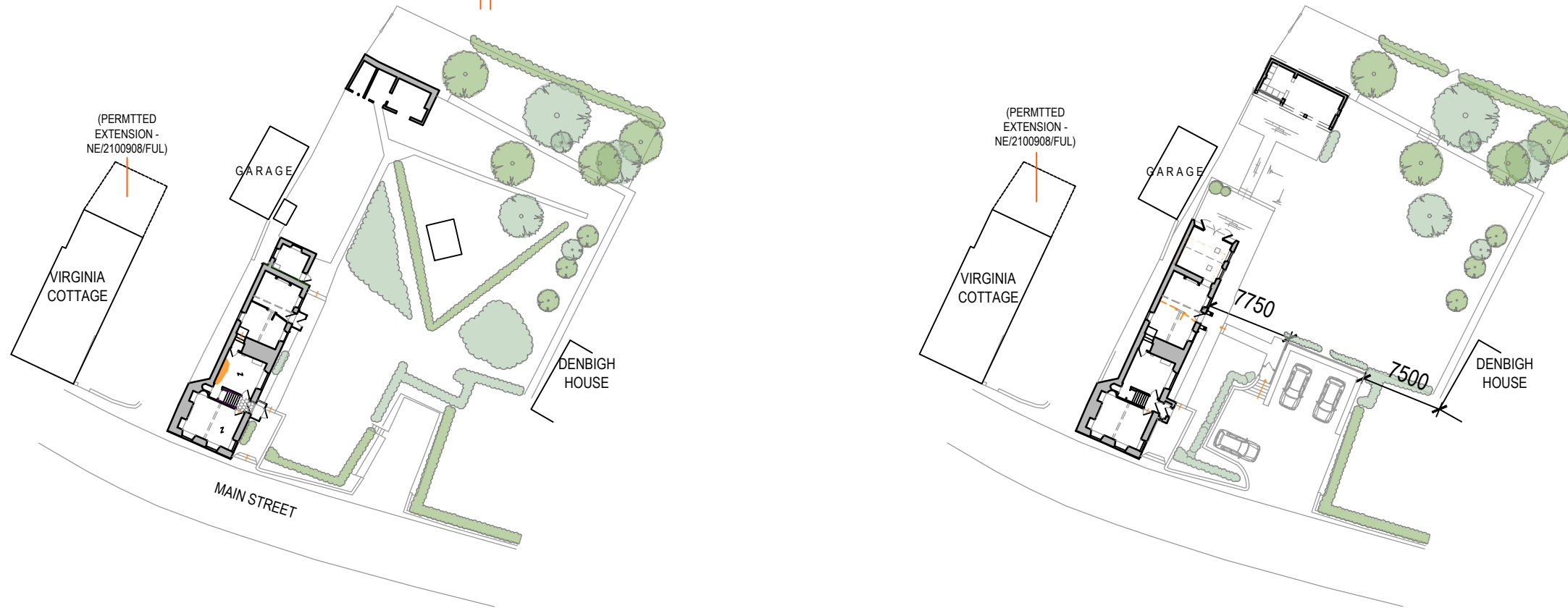
**NOTES**

- BOUNDARY TREATMENTS UNAFFECTED BY PROPOSALS.
- THREE PARKING SPACES AND TURNING FACILITIES PROVIDED IN ACCORDANCE WITH NORTHAMPTONSHIRE PARKING STANDARDS.
- EACH PARKING SPACE SHOWN AT 3.3M X 5.5M IN ACCORDANCE WITH NORTHAMPTONSHIRE PARKING STANDARDS.



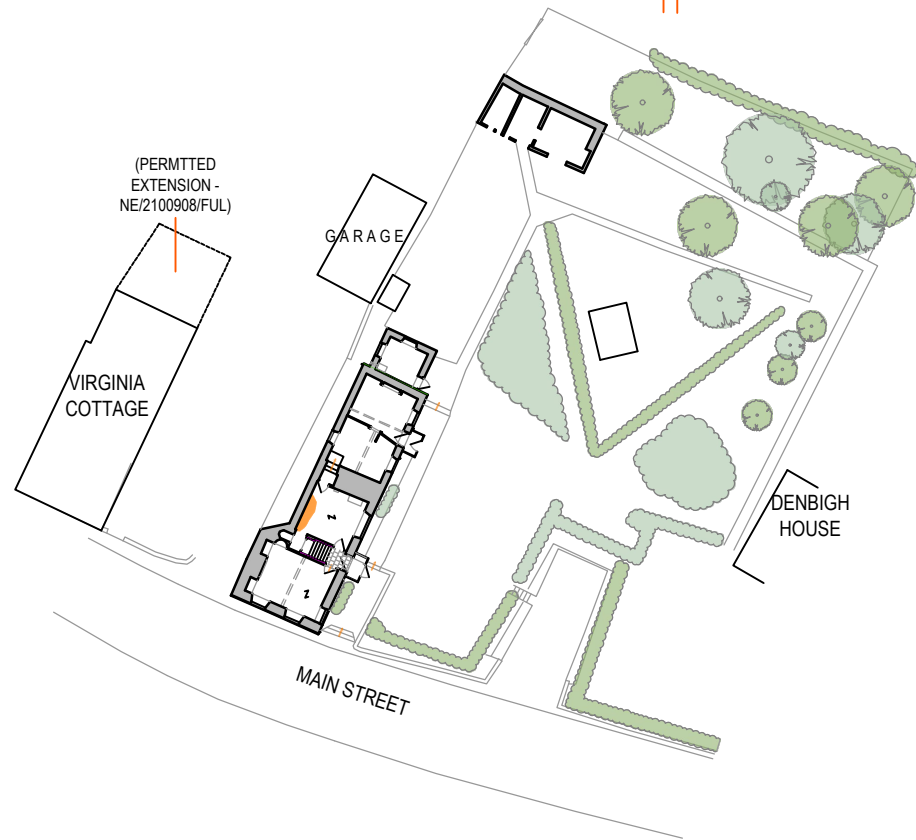
**LOCATION PLAN**

SCALE - 1:1250



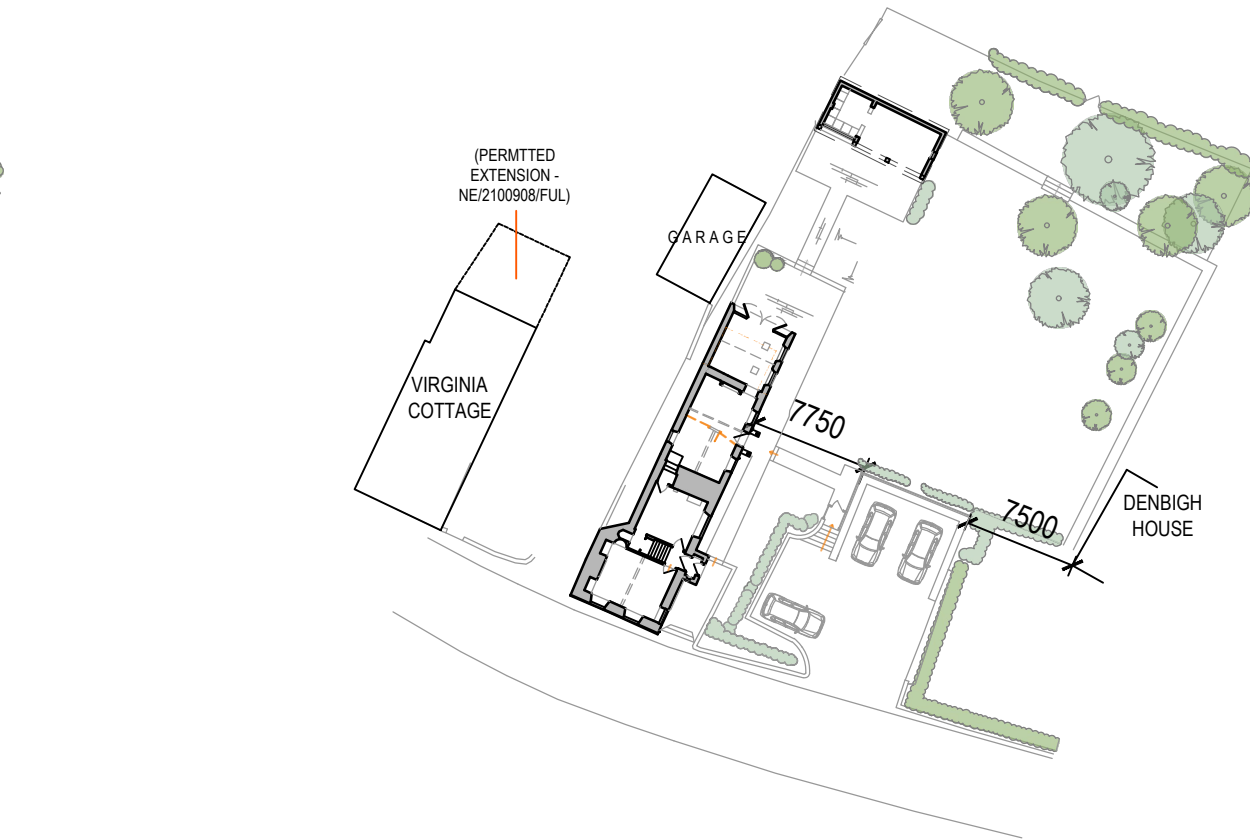
**EXISTING BLOCK PLAN**

SCALE - 1:500



**PROPOSED BLOCK PLAN**

SCALE - 1:500



B 05.01.22 REVISED PLANNING APPLICATION	J1
A 11.08.21 AMENDED IN ACCORDANCE WITH CLIENT COMMENTS	J1

Revisions

Project  
12 Main Street  
Bulwick  
NN17 3DY  
PE31 8

Drawing  
**Location and Block Plans**

**Harris McCormack Architects**

[harrismccormackarchitects.co.uk](http://harrismccormackarchitects.co.uk)

ArchHaus Peterborough Road Wansford PE8 6JN  
t 01780 433 334 architects@harrismccormack.co.uk

Date 24/06/21	Scale VRS @A3	Drawn
Job No. <b>20-965</b>	Drawing No. <b>(00)001</b>	Revision <b>B</b>

Do not scale from this drawing. If you are in doubt with any of the information on this drawing, ask for it to be verified. The contractor is to check and verify all dimensions on site before proceeding with the works. Alert Harris McCormack Architects of any discrepancies. This drawing is the copyright of Harris McCormack Architects.