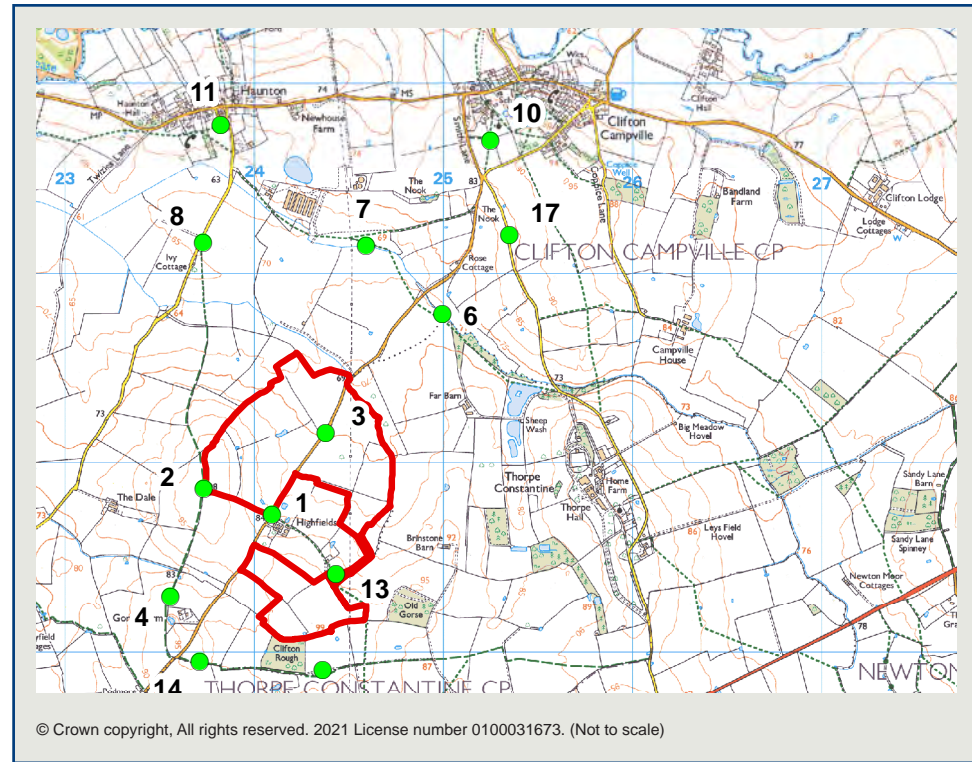


Approximate extent of the Proposed Development within the view, though the fields themselves are not discernible





rps PLANNING
CONSULTANTS
ARCHITECTS **Representative Viewpoint 10 (Winter): PRoW South of Clifton Campville, at St Andrew Church,
looking south-west (Footpath ref: Clifton Campville 24 / Clifton Campville 23)**

Highfields Farm Solar Farm
JSL3331

Date of photograph: 15/03/2021
OS Grid Ref: 425248, 310703

Horizontal field of view: 53.5°
To be viewed at comfortable arms length

Distance to site: 1,445m
Figure: 5j (i)



rps PLANNING
CONSULTANTS
PARTNERS Representative Viewpoint 10 (Winter): PRow South of Clifton Campville, at St Andrew Church,
looking south-west (Footpath ref: Clifton Campville 24 / Clifton Campville 23)

Highfields Farm Solar Farm
JSL3331

Date of photograph: 15/03/2021
OS Grid Ref: 425248, 310703

Horizontal field of view: 53.5°
To be viewed at comfortable arms length

Distance to site: 1,445m
Figure: 5j (ii)



rps PLANNING
CONSULTANTS
AND
ARCHITECTS
Representative Viewpoint 10 (Summer): PRoW South of Clifton Campville, at St Andrew Church,
looking south-west (Footpath ref: Clifton Campville 24 / Clifton Campville 23)

Highfields Farm Solar Farm
JSL3331

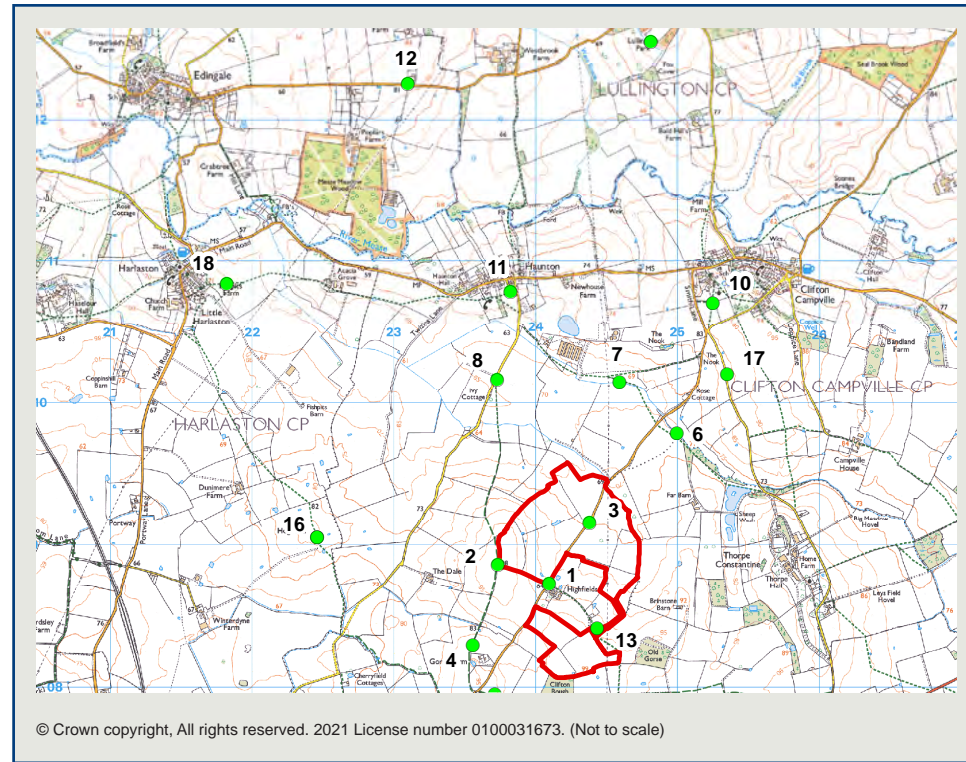
Date of photograph: 15/10/2020
OS Grid Ref: 425248, 310703

Horizontal field of view: 53.5°
To be viewed at comfortable arms length

Distance to site: 1,445m
Figure: 5j (iii)

Approximate extent of the Proposed Development within the view







Representative Viewpoint 11 (Winter): PRoW at Haunton off Syerscote Lane looking south (Foot-path Ref: Clifton Campville 26)

Highfields Farm Solar Farm
JSL3331

Date of photograph: 15/03/2021
OS Grid Ref: 423821, 310786

Horizontal field of view: 53.5°
To be viewed at comfortable arms length

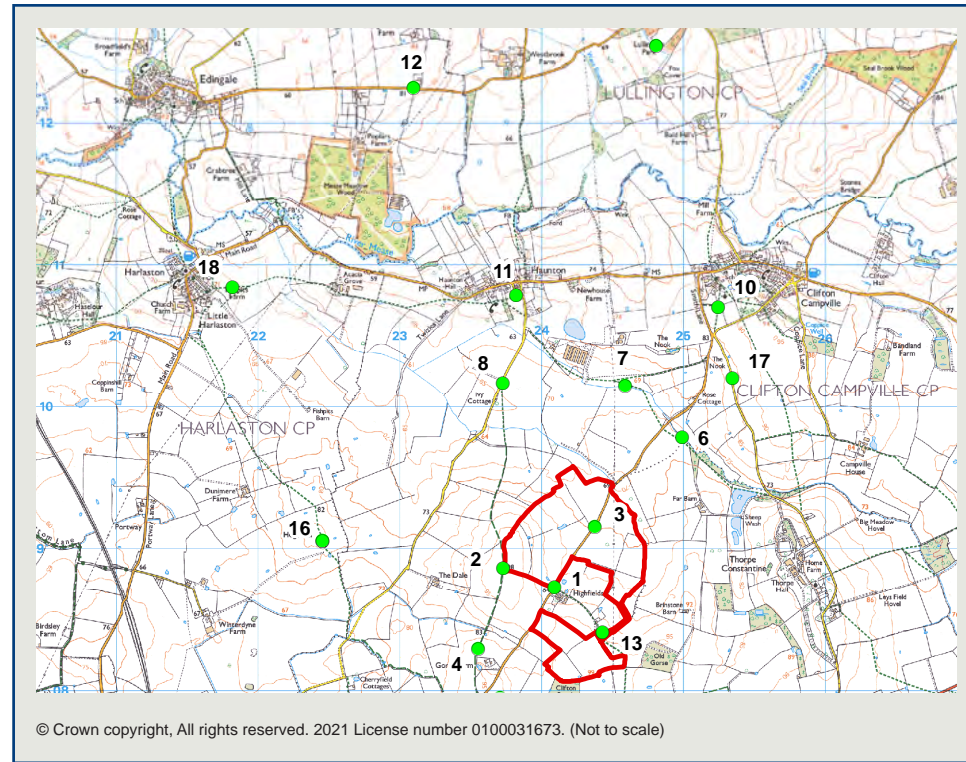
Distance to site: 1,274m
Figure: 5k (ii)





Approximate extent of the Application Site

Approximate extent of Proposed Development visible









Approximate extent of the Application Site

Approximate extent of Proposed Development visible

