

© 2021 RPS Group
 Notes
 1. This drawing has been prepared in accordance with the scope of RPS's appointment with its client and is subject to the terms and conditions of that appointment. RPS accepts no liability for any use of this document other than by its client and only for the purposes for which it was prepared and provided.
 2. If received electronically it is the recipient's responsibility to print to correct scale. Only written dimensions should be used.
 3. Where applicable Ordnance Survey (c) Crown Copyright 2021. All rights reserved. Licence number 0100031673

Key

- Site boundary.
- Tree with numbered reference. Canopy spread and BS5837:2012 tree quality category as shown below.
- Tree (location estimated) with numbered reference. Canopy spread and BS5837:2012 tree quality category.
- Tree off-site with numbered reference. Canopy spread and BS5837:2012 tree quality category.

BS 5837:2012 Tree Quality Categories - Table 1

- Category A - High quality
- Category B - Moderate quality
- Category C - Low quality
- Category U - Unsuitable for retention

Root protection area (RPA) Calculated in accordance with Section 4.6 - BS5837:2012

NOTES:

- Refer to RPS Tree Survey Report & Schedule for further details.
- Survey based on a visual inspection from the ground and is not intended as a full arboricultural inspection.
- Plan produced in accordance with recommendations set out in BS 5837:2012 - 'Trees in Relation to design, demolition and construction'.
- Due to the legal protection afforded to breeding birds vegetation removal should not take place during the bird nesting period, generally, although not restricted to, March - August inclusive.
- Survey based upon topographic survey produced by RPS in Stafford, November 2021.



Rev	Description	By	CB	Date



Lakesbury House, Hittingbury Road, Chandlers Ford, Hampshire SO53 5SS
 T: 02380 810 440 E: rpsso@rpsgroup.com

Client **Elgin Energy Esco Ltd**

Project **The Thorpe Estate Solar Farm**

Title **Tree Constaints Plan 1 of 5**

Status **For information** Drawn By **JMB** PM/Checked by **SK**

Job Ref **JSL3331** Scale @ **A1 1:1000** Date Created **Nov 2021**

RPS Drawing / Figure Number **701** Rev **A**

rpsgroup.com

Key

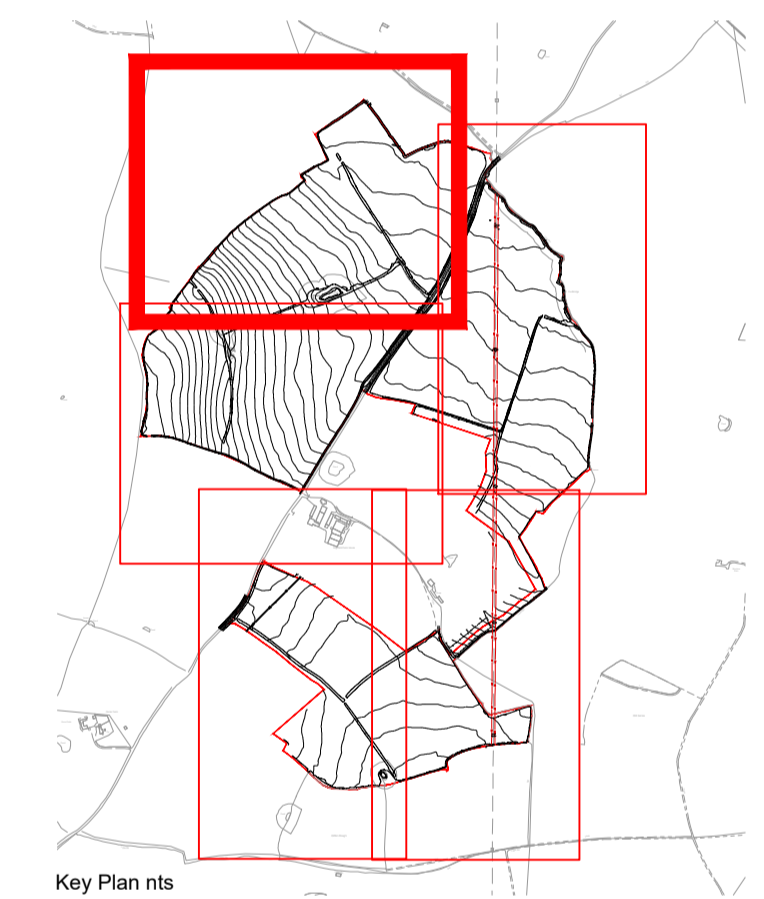
- Site boundary.
- Tree with numbered reference. Canopy spread and BS5837:2012 tree quality category as shown below.
- Tree (location estimated) with numbered reference. Canopy spread and BS5837:2012 tree quality category.
- Tree off-site with numbered reference. Canopy spread and BS5837:2012 tree quality category.

BS 5837:2012 Tree Quality Categories - Table 1

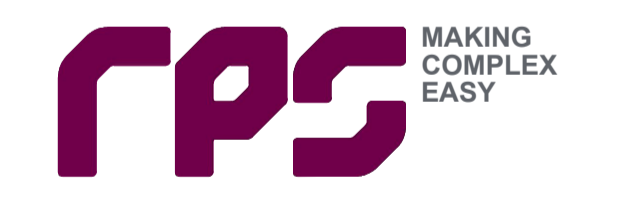
- Category A - High quality
- Category B - Moderate quality
- Category C - Low quality
- Category U - Unsuitable for retention

Root protection area (RPA)
 Calculated in accordance with Section 4.6 - BS5837:2012

- NOTES:**
- Refer to RPS Tree Survey Report & Schedule for further details.
 - Survey based on a visual inspection from the ground and is not intended as a full arboricultural inspection.
 - Plan produced in accordance with recommendations set out in BS 5837:2012 - 'Trees in Relation to design, demolition and construction'.
 - Due to the legal protection afforded to breeding birds vegetation removal should not take place during the bird nesting period, generally, although not restricted to, March - August inclusive.
 - Survey based upon topographic survey produced by RPS in Stafford, November 2021.



Rev	Description	By	CB	Date



Lakesbury House, Hillingbury Road, Chandlers Ford, Hampshire SO53 5SS
 T: 02380 810 440 E: rpsso@rpsgroup.com

Client **Elgin Energy Esco Ltd**

Project **The Thorpe Estate Solar Farm**

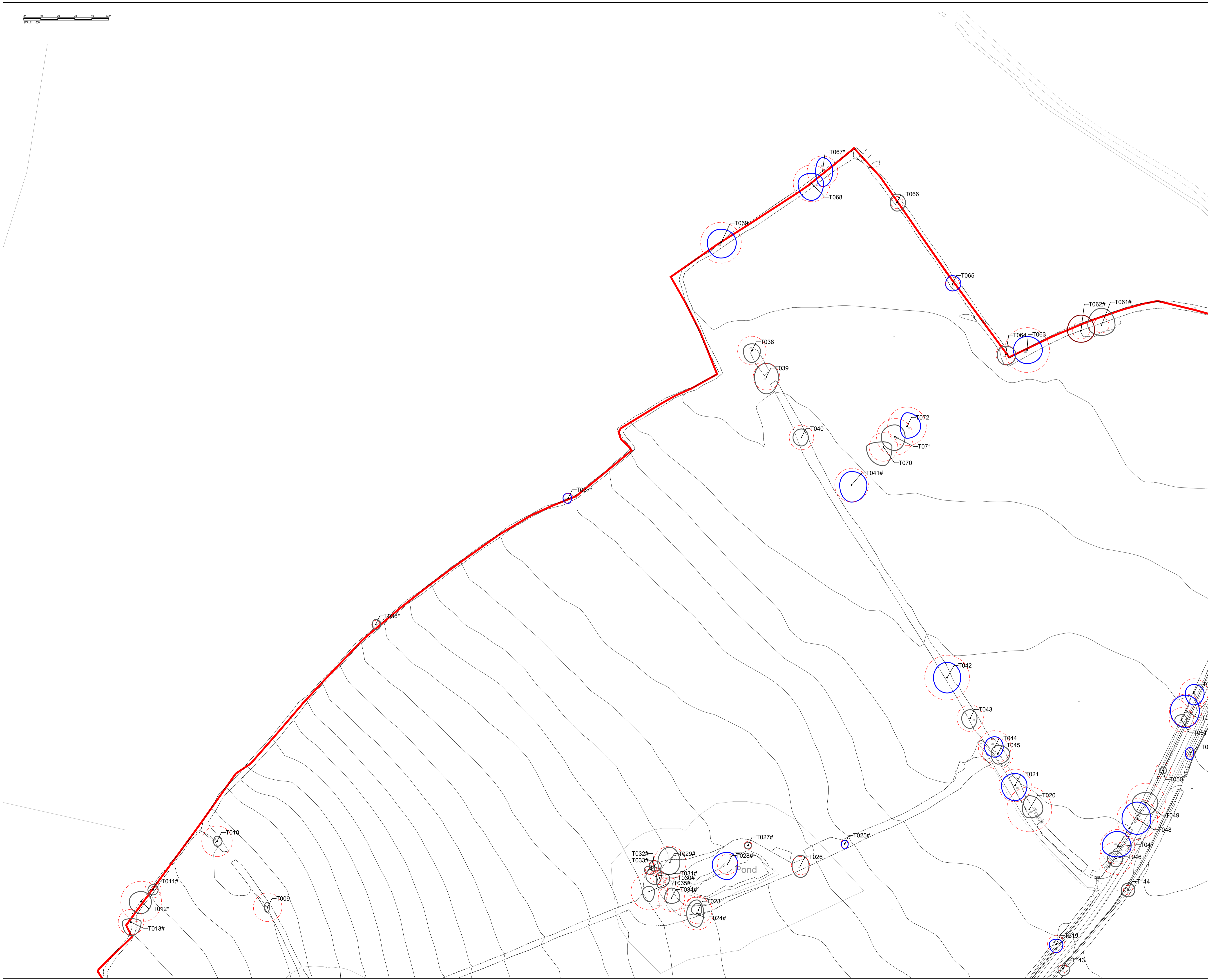
Title **Tree Constraints Plan 2 of 5**

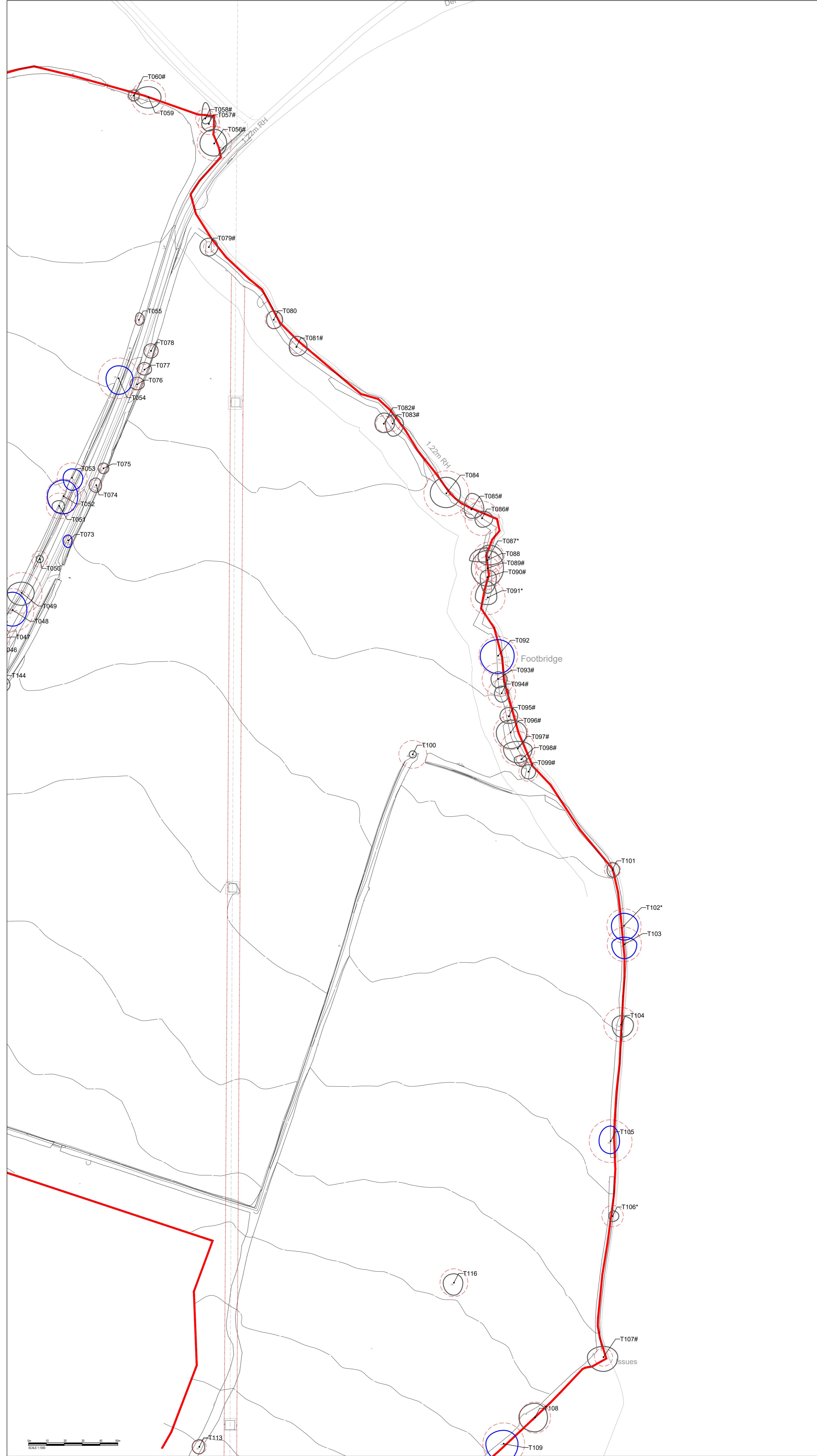
Status **For information** Drawn By **JMB** PM/Checked by **SK**

Job Ref **JSL3331** Scale @ **A1 1:1000** Date Created **Nov 2021**

RPS Drawing / Figure Number **702** Rev **A**

rpsgroup.com





© 2021 RPS Group
Notes
 1. This drawing has been prepared in accordance with the scope of RPS's appointment with its client and is subject to the terms and conditions of that appointment. RPS accepts no liability for any use of this document other than by its client and only for the purposes for which it was prepared and provided.
 2. If received electronically it is the recipient's responsibility to print to correct scale. Only written dimensions should be used.
 3. Where applicable Ordnance Survey (c) Crown Copyright 2021
 All rights reserved. Licence number 0100031673

Key

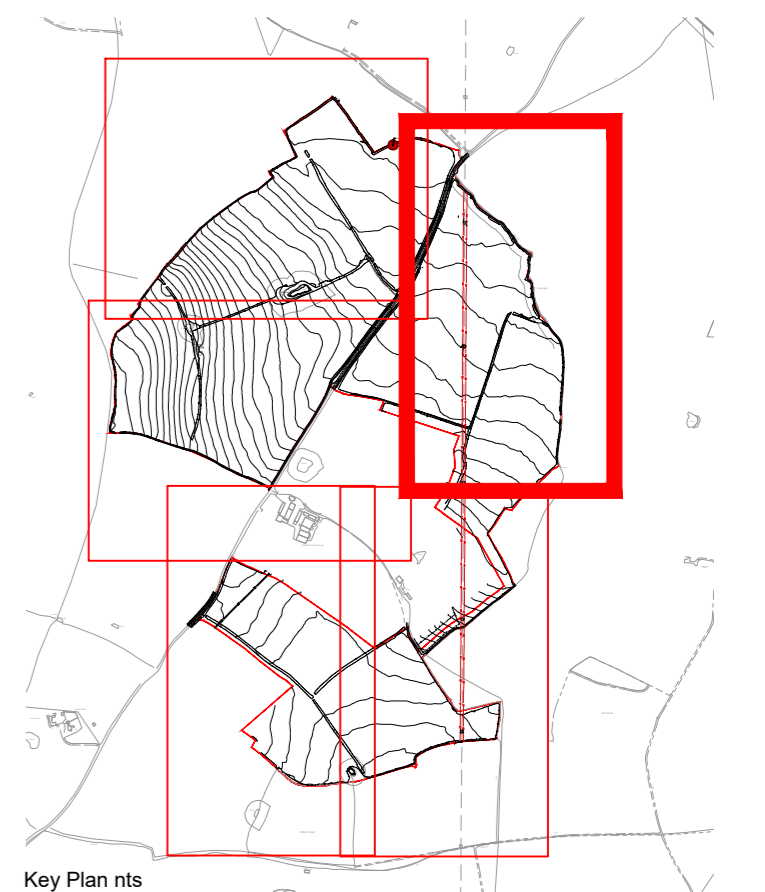
- Site boundary.
- Tree with numbered reference. Canopy spread and BS5837:2012 tree quality category as shown below.
- Tree (location estimated) with numbered reference. Canopy spread and BS5837:2012 tree quality category.
- Tree off-site with numbered reference. Canopy spread and BS5837:2012 tree quality category.

BS 5837:2012 Tree Quality Categories - Table 1

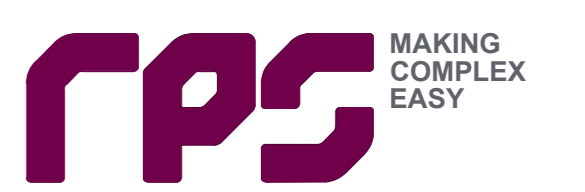
- Category A - High quality
- Category B - Moderate quality
- Category C - Low quality
- Category U - Unsuitable for retention

Root protection area (RPA)
 Calculated in accordance with Section 4.6 - BS5837:2012

- NOTES:**
- Refer to RPS Tree Survey Report & Schedule for further details.
 - Survey based on a visual inspection from the ground and is not intended as a full arboricultural inspection.
 - Plan produced in accordance with recommendations set out in BS 5837:2012 - 'Trees in Relation to design, demolition and construction'.
 - Due to the legal protection afforded to breeding birds vegetation removal should not take place during the bird nesting period; generally, although not restricted to, March - August inclusive.
 - Survey based upon topographic survey produced by RPS in Stafford, November 2021.



Rev	Description	By	CB	Date



Lakesbury House, Hillingbury Road, Chandlers Ford, Hampshire SO53 5SS
 T: 02380 810 440 E: rpsso@rpsgroup.com

Client **Elgin Energy Esco Ltd**

Project **The Thorpe Estate Solar Farm**

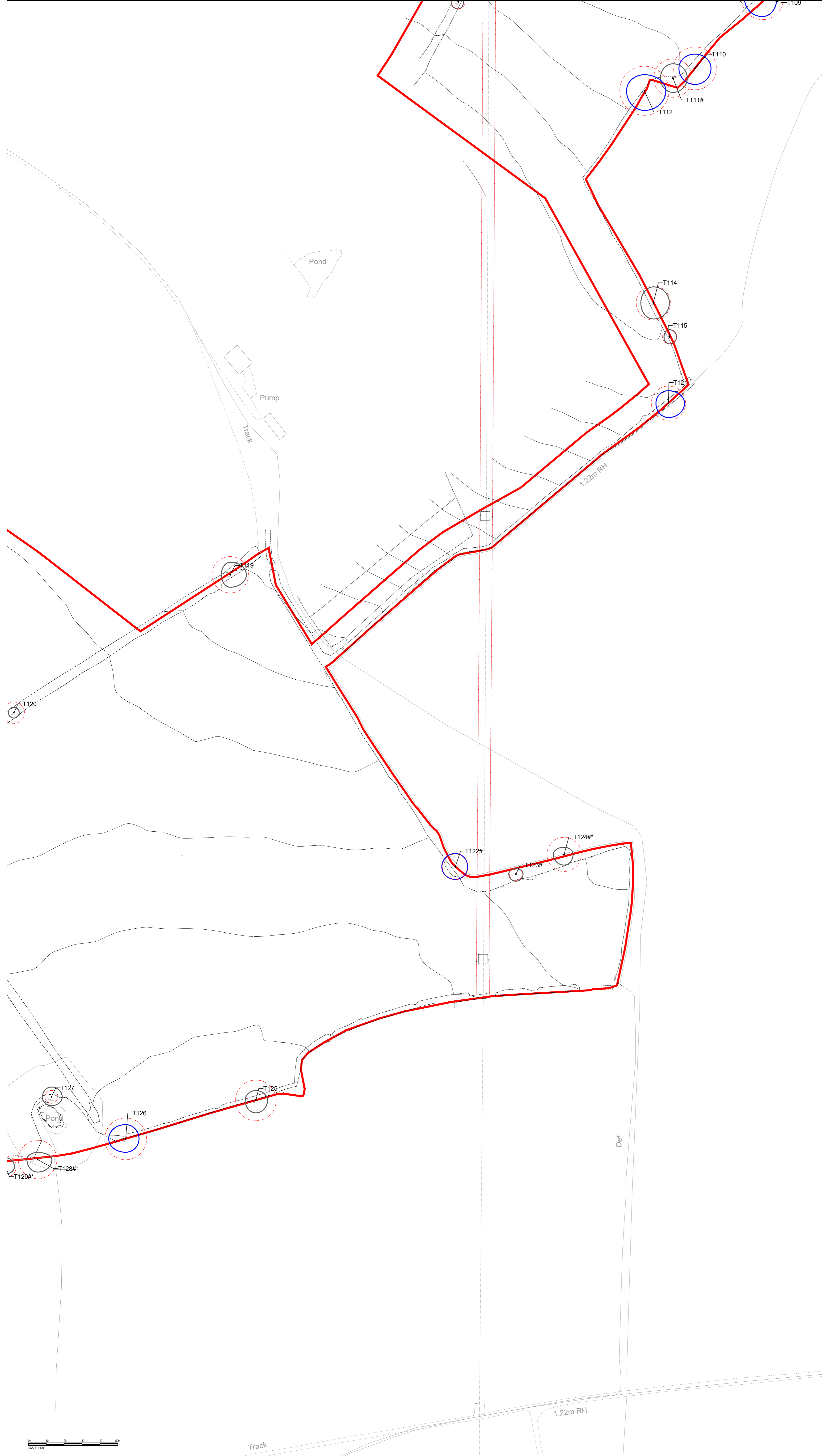
Title **Tree Constraints Plan 3 of 5**

Status **For information** Drawn By **JMB** PM/Checked by **SK**

Job Ref **JSL3331** Scale @ **A1** Date Created **Nov 2021**

RPS Drawing / Figure Number **703** Rev **A**

rpsgroup.com



© 2021 RPS Group

Notes

- This drawing has been prepared in accordance with the scope of RPS's appointment with its client and is subject to the terms and conditions of that appointment. RPS accepts no liability for any use of this document other than by its client and only for the purposes for which it was prepared and provided. Only written dimensions should be used.
- If received electronically it is the recipient's responsibility to print to correct scale.
- Where applicable Ordnance Survey (c) Crown Copyright 2021. All rights reserved. Licence number 0100031673

Key

- Site boundary.
- Tree with numbered reference. Canopy spread and BS5837:2012 tree quality category as shown below.
- Tree (location estimated) with numbered reference. Canopy spread and BS5837:2012 tree quality category.
- Tree off-site with numbered reference. Canopy spread and BS5837:2012 tree quality category.

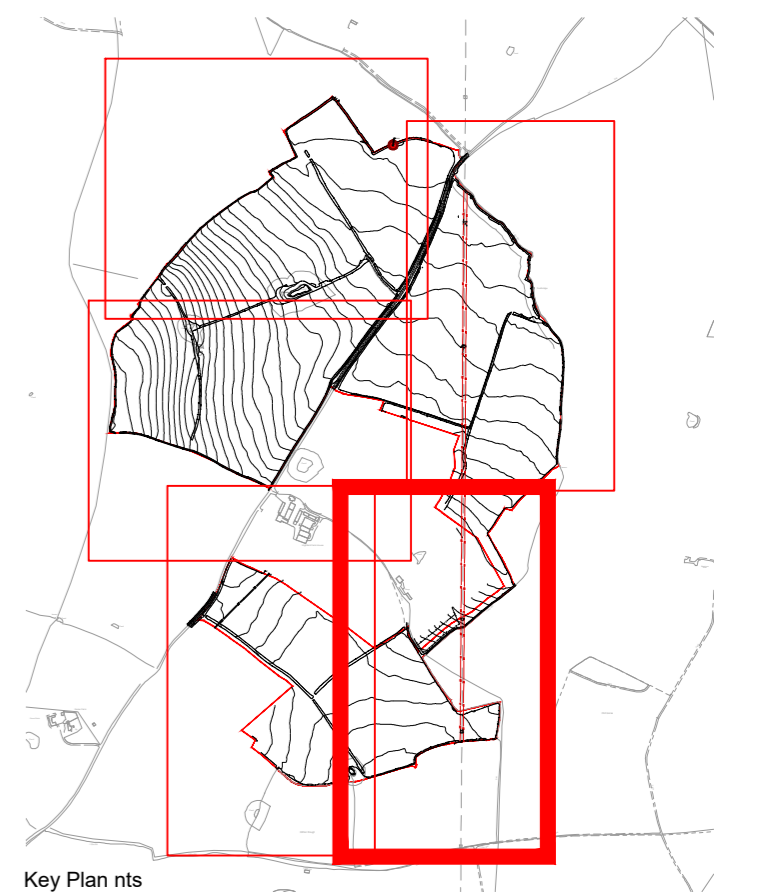
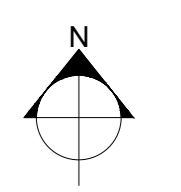
BS 5837:2012 Tree Quality Categories - Table 1

- Category A - High quality
- Category B - Moderate quality
- Category C - Low quality
- Category U - Unsuitable for retention

Root protection area (RPA) Calculated in accordance with Section 4.6 - BS5837:2012

NOTES:

- Refer to RPS Tree Survey Report & Schedule for further details.
- Survey based on a visual inspection from the ground and is not intended as a full arboricultural inspection.
- Plan produced in accordance with recommendations set out in BS 5837:2012 - 'Trees in Relation to design, demolition and construction'.
- Due to the legal protection afforded to breeding birds vegetation removal should not take place during the bird nesting period; generally, although not restricted to, March - August inclusive.
- Survey based upon topographic survey produced by RPS in Stafford, November 2021.



Rev	Description	By	CB	Date



Lakesbury House, Hillingbury Road, Chandlers Ford, Hampshire SO53 5SS
 T: 02380 810 440 E: rpsso@rpsgroup.com

Client **Elgin Energy Esco Ltd**

Project **The Thorpe Estate Solar Farm**

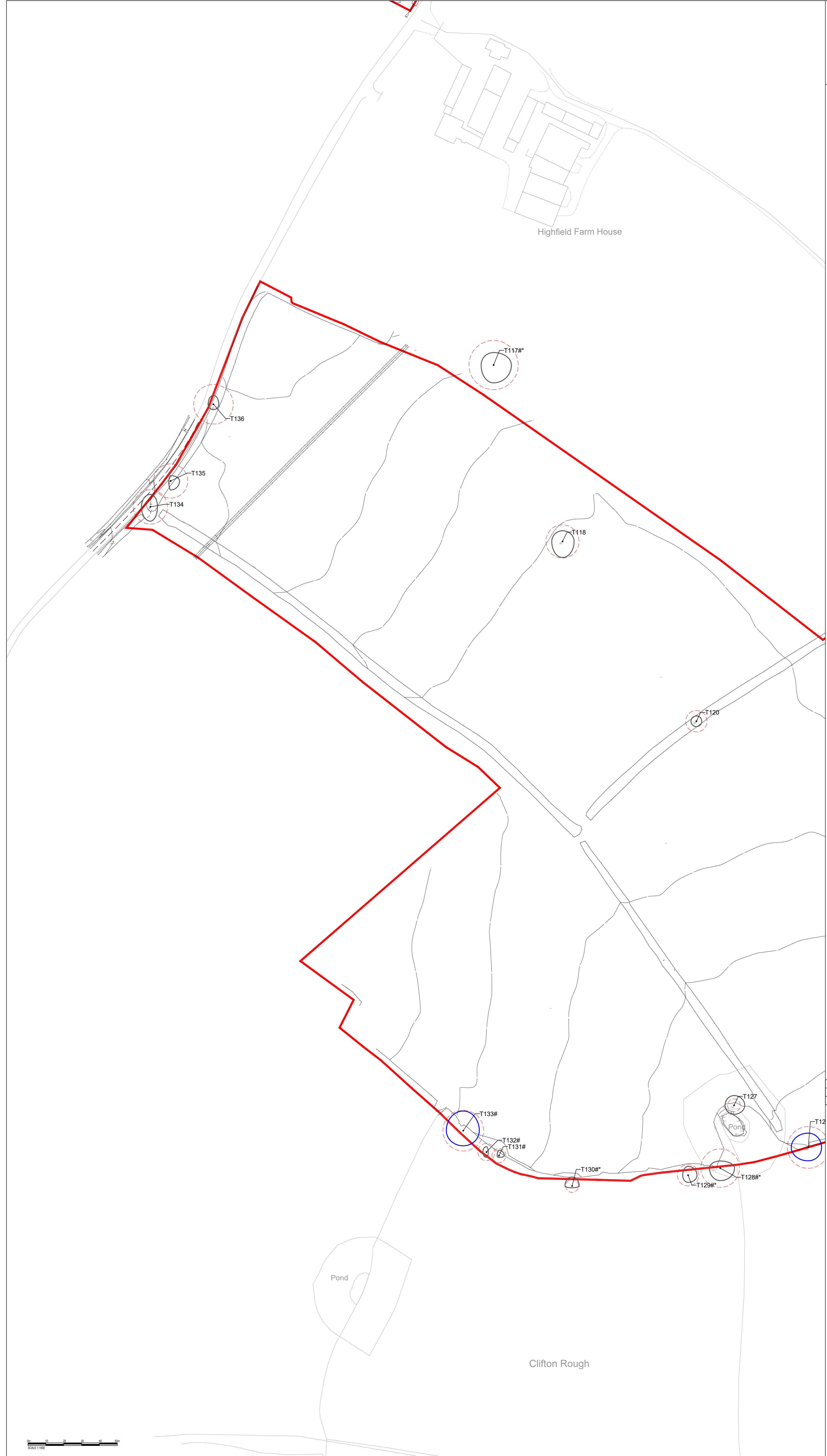
Title **Tree Constraints Plan 4 of 5**

Status **For information** Drawn By **JMB** PM/Checked by **SK**

Job Ref **JSL3331** Scale @ **A1** Date Created **Nov 2021**

RPS Drawing / Figure Number **704** Rev **A**

rpsgroup.com



© 2021 RPS Group
Notes
 1. This drawing has been prepared in accordance with the scope of RPS's appointment with its client and is subject to the terms and conditions of that appointment. RPS accepts no liability for any use of this document other than by its client and only for the purposes for which it was prepared and provided.
 2. If received electronically it is the recipient's responsibility to print to correct scale. Only written dimensions should be used.
 3. Where applicable Ordnance Survey (c) Crown Copyright 2021. All rights reserved. Licence number 0100031673

Key

- Site boundary.
- Tree with numbered reference. Canopy spread and BS5837:2012 tree quality category as shown below.
- Tree (location estimated) with numbered reference. Canopy spread and BS5837:2012 tree quality category.
- Tree off-site with numbered reference. Canopy spread and BS5837:2012 tree quality category.

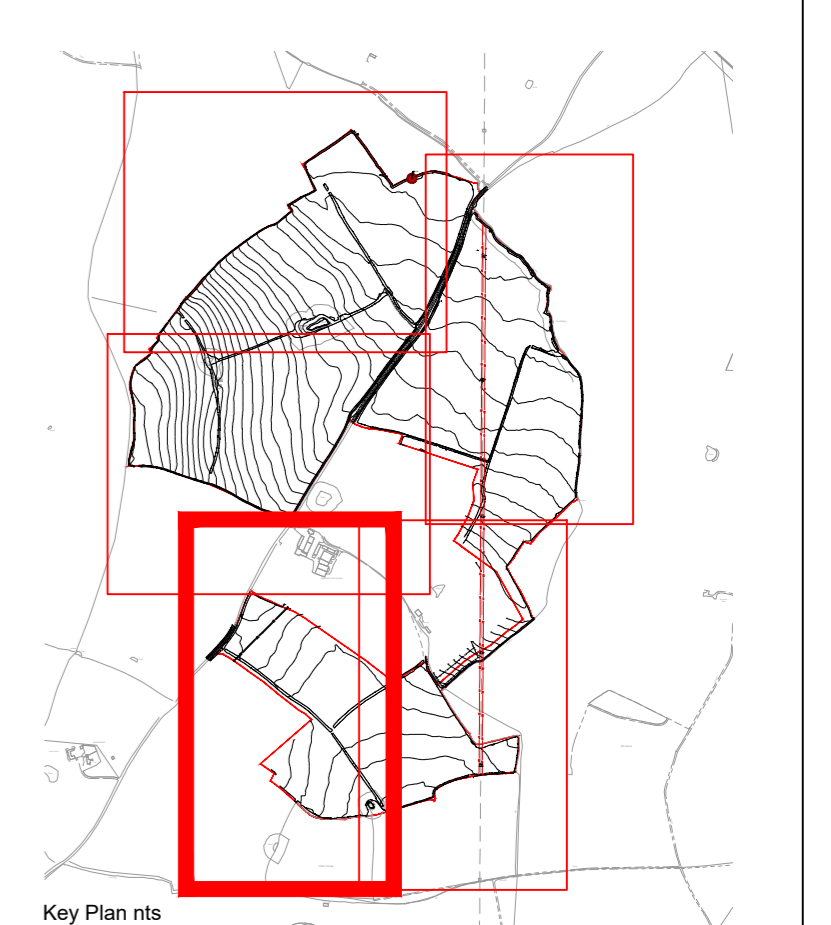
BS 5837:2012 Tree Quality Categories - Table 1

- Category A - High quality
- Category B - Moderate quality
- Category C - Low quality
- Category U - Unsuitable for retention

Root protection area (RPA) Calculated in accordance with Section 4.6 - BS5837:2012

NOTES:

- Refer to RPS Tree Survey Report & Schedule for further details.
- Survey based on a visual inspection of the ground and is not intended as a full arboricultural inspection.
- Plan produced in accordance with recommendations set out in BS 5837:2012 - 'Trees in Relation to design, demolition and construction'.
- Due to the legal protection afforded to breeding birds vegetation removal should not take place during the bird nesting period, generally, although not restricted to, March - August inclusive.
- Survey based upon topographic survey produced by RPS in Stafford, November 2021.



Rev	Description	By	CB	Date

rps MAKING COMPLEX EASY

Lakesbury House, Hillingbury Road, Chandlers Ford, Hampshire SO53 5SS
 T: 02380 810 440 E: rpsso@rpsgroup.com

Client **Elgin Energy Esco Ltd**

Project **The Thorpe Estate Solar Farm**

Title **Tree Constraints Plan 5 of 5**

Status **For information** Drawn By **JMB** PM/Checked by **SK**

Job Ref **JSL3331** Scale @ **A1** Date Created **Nov 2021**

RPS Drawing / Figure Number **705** Rev **A**

rpsgroup.com

TREE SURVEY SCHEDULE

Site: Highfield Farm, Thorpe Estate
 Project Schedule Ref: JSL3331_750
 Drawing Reference: JSL3331_700A (701, 702, 703, 704, 705)
 Survey date: Sept-October 2021

Surveyor: N.Scally
 Status: For Planning
 Revision:
 Notes: Stem dia. (mm) for trees with 6 or more stems are estimated averages.



Ref. no	Species	Height (m)	Crown spread (m)				Canopy area (sqm)	Stem dia. (mm)	Stem no. at 1.5m	Height of crown clearance (m)	Dir/height	Age class	Structural Condition	Physiological Condition	General Observations Management Recommendations	Estimated remaining contribution (yrs)	Tree Quality Category (BS5837)
			N	S	E	W											
T001	Fraxinus excelsior - Common Ash	15	5	4	5	6	78	700	1	6	NW	M	Fair	Fair	Large lateral loss S 4m and NE 5m exposed decaying heartwood with reaction growth forming around wounds, further limb failure at 7m E, fungal fruiting bodies present on lateral limb 4m W and on stem 6.5m S, moderate deadwood in crown, Good vigour with good foliage cover Fractured limbs - storm damage	20+	B2
T002	Quercus robur - Pedunculate Oak	13	8	7	6	7	153	950	1	4.5	NW	M	Fair	Good	Low branches (5.2) obstruct vehicle access. Fractured limbs - storm damage Minor deadwood in crown	40+	B2
T003	Fraxinus excelsior - Common Ash	14	6	8	9	5	154	800	1	5	NW	M	Fair	Fair	Stem hollow, decayed, cracked (inc. shear cracks) Fractured limbs - storm damage Dead wood Old wound on stem at 6m SE with hollow cavity with Barn Owl roosting, fungi fruiting body present on main stem at 10m, die back in upper crown	10+	B2
T004	Quercus robur - Pedunculate Oak	12	3	5	4	4	50	1000	1	3.5	SE	V	Fair	Good	Fractured limbs - storm damage Fungi fruiting body present on stem at 1.6m N and W Historical heavy limb reduction/loss, pruning wound at 3m NE with exposed decaying heartwood crown retrenchment and other characteristics of veteran tree Stem hollow, decayed, cracked (inc. shear cracks) Bark necrosis, N side of stem from ground level to 1.3m	20+	B2
T005	Fraxinus excelsior - Common Ash	13	3	5	1	5	38	1000	1	4	W	OM	Poor	Fair	Restricted access due to hedge and failed stem hollow, decayed, cracked (inc. shear cracks) result of historic storm damage possible 87 or 89 storms, retrenchment of crown Fractured limbs - storm damage, recently failed stem & lateral with debris in field	10+	C2
T006	Quercus robur - Pedunculate Oak	12	6	8	9	6	165	920	1	4.5	N	M	Good	Good	Old pruning wound on stem at 3.5m S and NW at 3.5m with exposed decaying heartwood, Dead wood in crown	40+	B2
T007	Fraxinus excelsior - Common Ash	14	5	9	7	5	132	950	1	6	E	M	Fair	Fair	Reactive growth Fractured limbs - storm damage Dead wood	10+	C2
T008	Fraxinus excelsior - Common Ash	10	6	5	7	4	95	450	1	3.5	S	EM	effect, decay cavi	Fair	Stem decay Stem hollow, decayed, with large fungi fruiting body present Fractured limbs - storm damage Dead wood	10+	C2

Note: This survey is based on a brief visual inspection from the ground.
 It is not intended as a full arboricultural inspection.
 # - indicates estimated/offsite tree.

Ref. no	Species	Height (m)	Crown spread (m)				Canopy area (sqm)	Stem dia. (mm)	Stem no. at 1.5m	Height of crown clearance (m)	Dir/ height	Age class	Structural Condition	Physiological Condition	General Observations Management Recommendations	Estimated remaining contribution (yrs)	Tree Quality Category (BS5837)
			N	S	E	W											
T009	Fraxinus excelsior - Common Ash	6	3	3	1	2	14	700	1	2	S	M			Root decay NE Stem decayed, cracked storm damage, historic catastrophic failure of stem exposed decaying heartwood, Good reaction growth on stem	10+	C2
T010	Fraxinus excelsior - Common Ash	6	3	3	3	2	24	750	1	2	S	M	Poor	Fair	Stem hollow, decayed, cracked (inc. shear cracks) historic failure of stem at 3.5m reaction growth on stem no long term future	<10	C2
T011	Ilex aquifolium - Common Holly	5	3	3	3	3	28	400	1	2.5	E	EM	Fair	Fair	Restricted survey tree growing in hedge row, foliage sparse in upper crown	10+	C2
T012	Fraxinus excelsior - Common Ash	15	6	7	6	7	133	1000	2	5	SE	M	Poor	Fair	Low branches (5.2) obstruct vehicle access. Stem hollow, decayed, cracked (inc. shear cracks) Dead wood	10+	C2
T013	Fraxinus excelsior - Common Ash	14	2	8	6	5	86	620	1	6	W	M	Fair	Fair	Fungi fruiting body on stem 6m E, crown predominantly to SW, deadwood in crown	10+	C2
T014	Tilia sp. - Lime sp.	10	6	6	5	6	104	400	1	1	N	EM	Fair	Fair	Stem/limb decay Lapsed pollard Dead wood	20+	C2
T015	Fraxinus excelsior - Common Ash	7	2	3	3	2	20	1000	1	3	NE	M	Physical Defect	Poor	Restricted survey, bramble and ivy infestation, historic failure of stem at 7m Reactive growth Fractured limbs - storm damage Dieback - poor foliage Dead wood Prolific ivy	10+	C2
T016	Fraxinus excelsior - Common Ash	8	4	4	6	4	63	700	1	5	W	M	Poor	Fair	Restricted survey due to bramble and ivy infestation, decay cavity at base of stem W historic failure of stem 6m, historic multiple limb failures at 4m & 5m S with exposed decaying heartwood, deadwood	10+	C2
T017	Fraxinus excelsior - Common Ash	7	4.5	5	4	4.5	63	300	1	4.5	S	SM	Fair	Good	Restricted survey due to brambles, moderate deadwood	20+	B2
T018	Fraxinus excelsior - Common Ash	15	5	9	9	9	198	850	1	6	NE	M	Poor	Fair	Restricted survey due to brambles and ivy, Stem decay at 6m S Fractured limbs - storm damage Dead wood	10+	C2
T019	Fraxinus excelsior - Common Ash	9	3	5	4	4	50	420	1	5	E	SM	Fair	Good	Restricted survey due to brambles, minor deadwood	20+	B2
T020	Fraxinus excelsior - Common Ash	16	8	5	8	4	123	1100	1	5	NE	M	Poor	Fair	Stem/limb decay Stem hollow, decayed, cracked Fractured limbs - storm damage Dead wood	10+	C2
T021	Quercus robur - Pedunculate Oak	15	7	9	7	8	188	800	1	6	N	M	Good	Good	Dead wood	40+	B2

Note: This survey is based on a brief visual inspection from the ground.
It is not intended as a full arboricultural inspection.
- indicates estimated/offsite tree.

Ref. no	Species	Height (m)	Crown spread (m)				Canopy area (sqm)	Stem dia. (mm)	Stem no. at 1.5m	Height of crown clearance (m)	Dir/ height	Age class	Structural Condition	Physiological Condition	General Observations Management Recommendations	Estimated remaining contribution (yrs)	Tree Quality Category (BS5837)
			N	S	E	W											
T022	Fraxinus excelsior - Common Ash	12	5	7	7	6	123	700	1	4	N	EM	Poor	Poor	Dieback - poor foliage Dead wood Fungi fruiting bodies present on stem at 4m, 4.5m, 6m SW, further fruiting body present on main structural limb at 4.5 m and 6m , Bark necrosis on main structural limb at 4.5m NW below old pruning wound with exposed decay wood No long term future Poor overall Physiological and Structural condition.	<10	C3
T023	Quercus robur - Pedunculate Oak	9	4	3	2	4	33	670	1	2	S	OM	Fair	Fair	Bark necrosis, Dead wood Crown retrenchment with good features for wildlife habitat	10+	C2
T024	Fraxinus excelsior - Common Ash	10	8	8	4	6	126	810	1	5	SW	M	Fair	Fair	Stem/limb decay Fractured limbs - storm damage Dead wood	10+	C2
T025	Quercus robur - Pedunculate Oak	5	2	2.5	1.5	1.5	11	200	1	2.5	NE	Y	Good	Good	Good overall Physiological and Structural condition.	40+	B1
T026	Salix sp. - Weeping Willow	12	6	7	5	5	102	460	1	5	W	EM	Fair	Fair	Inclusive bark Bark necrosis Dead wood	20+	C2
T027	Salix sp. x5 - Weeping Willow	5	2	2	2	2	13	200	5	3	NE	Y	Fair	Fair	Fractured limbs - storm damage	20+	C2
T028	Quercus robur - Pedunculate Oak	12	7	9	6	9	188	510	1	1	NW	EM	Good	Good	Minor Dead wood	40+	B1
T029	Fraxinus excelsior - Common Ash	16	8.5	7	6	6.5	152	810	1	6	W	M	Poor	Fair	Stem/limb decay, partial collapse large lateral 3m NE Stem hollow, decayed, Dead wood Fungi fruiting bodies present 10m NW	10+	C3
T030	Salix sp. - Weeping Willow	12	3	6	6	2	57	330	1	4	SE	EM	Fair	Fair	Included stem unions at 1.5m, stems growing towards E, crown minor deadwood	20+	C2
T031	Salix sp. - Weeping Willow	12	5	5	3	6	71	290	1	5	SW	EM	Fair	Fair	Included union of stems at 0.5m, deadwood	20+	C2
T032	Crataegus monogyna - Common Hawthorn	8	3	3	4	3	33	280	1	2.5	NE	M	Fair	Fair	Included union of stems at ground level, deadwood	20+	C2
T033	Crataegus monogyna - Common Hawthorn	6	2	3	2	3.5	22	280	1	2	W	M	Fair	Fair	Fair overall Physiological and Structural condition.	20+	C2
T034	Salix sp. - Weeping Willow	12	6	3	5	4	64	650	1	6	W	EM	Fair	Fair	Stem leaning towards N Fair overall Physiological and Structural condition.	20+	C3
T035	Fraxinus excelsior - Common Ash	7	3	6	3	4	49	900	1	5	S	M	Poor	Fair	Root decay Stem hollow, decayed, cracked (inc. shear cracks) Fractured limbs - storm damage	<10	C1
T036	Fraxinus excelsior - Common Ash	6	3	3	3	2	24	200	1	2	S	M	Fair	Fair	Original stem has collapsed leaving 2 young off shoots attached at ground level	10+	C2
T037	Fraxinus excelsior - Common Ash	8	3	3	2	3	24	240	1	2.5	N	SM	Good	Good	Good overall Physiological and Structural condition.	20+	B2

Note: This survey is based on a brief visual inspection from the ground.
It is not intended as a full arboricultural inspection.
- indicates estimated/offsite tree.

Ref. no	Species	Height (m)	Crown spread (m)				Canopy area (sqm)	Stem dia. (mm)	Stem no. at 1.5m	Height of crown clearance (m)	Dir/height	Age class	Structural Condition	Physiological Condition	General Observations Management Recommendations	Estimated remaining contribution (yrs)	Tree Quality Category (BS5837)
			N	S	E	W											
T038	Fraxinus excelsior - Common Ash	12	4	7	4.5	5	82	700	2	5	S	M	Poor	Poor	Bifurcation 2m with included union Stem hollow, decayed, fungi fruiting bodies present Fractured limbs - storm damage Dieback - poor foliage Dead wood	10+	C2
T039	Fraxinus excelsior - Common Ash	15	8	10	7	7	198	650	1	6	S	M	Poor	Poor	Dieback - poor foliage Dead wood	10+	C2
T040	Fraxinus excelsior - Common Ash	8	5	5	4	5	71	600	1	4	S	M	Decaying	Fair	Restricted survey due to brambles around stem. Historic failure of stem, has left exposed decaying heartwood with fungi fruiting bodies present tree showing good vigour with dense foliage cover	10+	C3
T041	Fraxinus excelsior - Common Ash	16	8	10	9	7	226	830	1	7	S	M	Fair	Good	Large crown spread with some fungi fruiting bodies present on secondary stem at 8m and 9m NE , moderate deadwood low crown extends over proposed site	10+	B2
T042	Fraxinus excelsior - Common Ash	16	9	9	8	8	226	1100	1	7	SE	M	Fair	Good	Fungi fruiting bodies present on stem at 7m NE and on secondary lateral 7m NW, deadwood	20+	B2
T043	Quercus robur - Pedunculate Oak	15	5	6	4	5	78	650	1	7	NW	M	Fair	Fair	Restricted survey due to brambles Dead wood	20+	C1
T044	Quercus robur - Pedunculate Oak	16	6	6	5	6	104	800	1	6	W	M	Good	Good	Dead wood	40+	B1
T045	Fraxinus excelsior - Common Ash	17	5	6	7	4	95	740	1	7	SW	M	Fair	Poor	In a state of decline limb decay fungi fruiting bodies present and decay cavities present Dieback - poor foliage Dead wood	<10	C2
T046	Fraxinus excelsior - Common Ash	12	4	5	4	5	64	800	1	5	SW	M	Poor	Fair	Restricted survey due to brambles and ivy infestation on stem Stem decay various fungi fruiting up stem to a height of 5m Lapsed pollard Prolific ivy	<10	C2
T047	Quercus robur - Pedunculate Oak	15	8.5	5.5	8	9	187	860	1	6	E	M	Good	Good	Dead wood	40+	B2
T048	Quercus robur - Pedunculate Oak	14	10	9	8	9	254	1000	1	6	W	M	Good	Good	Restricted survey due to ivy infestation on stem Dead wood	40+	B2
T049	Quercus robur - Pedunculate Oak	15	6	7	7	8	153	950	1	6	NE	M	Good	Poor	Dieback - poor foliage Old pruning wound Cavities on N side of stem at 5 & 6m, Deadwood	10+	C1
T050	Ilex aquifolium - Common Holly	6	2	2	2	2	13	380	1	3	W	EM	Good	Fair	Fair overall Physiological and Structural condition.	20+	C1
T051	Quercus robur - Pedunculate Oak	9	3	4	3	4	38	600	1	3	SW	EM	Fair	Good	Restricted survey due to brambles and ivy infestation, Historic storm damage, crown retrenchment Deadwood	20+	C1
T052	Quercus robur - Pedunculate Oak	16	9	10	8	9	254	800	1	6	NE	M	Good	Good	Dead wood	40+	B2

Note: This survey is based on a brief visual inspection from the ground.
It is not intended as a full arboricultural inspection.
- indicates estimated/offsite tree.

Ref. no	Species	Height (m)	Crown spread (m)				Canopy area (sqm)	Stem dia. (mm)	Stem no. at 1.5m	Height of crown clearance (m)	Dir/ height	Age class	Structural Condition	Physiological Condition	General Observations Management Recommendations	Estimated remaining contribution (yrs)	Tree Quality Category (BS5837)
			N	S	E	W											
T053	Quercus robur - Pedunculate Oak	14	5	7	6	5	104	700	1	4	S	M	Fair	Good	Restricted survey due to ivy infestation on stem Minor deadwood	40+	B1
T054	Quercus robur - Pedunculate Oak	14	7	9	8	7	188	950	1	5	SW	M	Fair	Fair	Restricted survey due to brambles on stem Epicormic growth in crown Deadwood	20+	B2
T055	Fraxinus excelsior - Common Ash	8	4	3	3	2	27	200	1	3.5	SW	SM	Fair	Fair	Restricted survey due to brambles and ivy on stem Minor Dead wood	10+	C1
T056	Fraxinus excelsior - Common Ash	15	8	7	7	8	177	800	1	6	W	M	Fair	Fair	Off site tree Restricted survey due to brambles and ivy on stem	10+	C1
T057	Salix sp. - Weeping Willow	12	4	4	4	4	50	500	1	5	W	M	Fair	Fair	Restricted survey due to brambles and stem infested with ivy Off site tree Stem leaning to N Failed limb still attached to stem to N	10+	C3
T058	Salix sp. - Weeping Willow	10	9	3	3	2	47	450	1	4	S		Fair	Fair	Off site tree Restricted survey due to brambles Stem leaning to N	10+	C3
T059	Fraxinus excelsior - Common Ash	14	6	6	7	8	141	800	1	6	SE	M	Poor	Poor	Restricted survey due to ivy and brambles Large cavity on stem at 3m, suggest hollowing stem decaying heartwood present and reaction growth around cavity Dieback - poor foliage Dead wood	<10	C3
T060	Fraxinus excelsior x2 - Weeping Common Ash	12	3	3	3	3	28	300	2	5	N	SM	Fair	Fair	Restricted survey due to trees in hedge row Dead wood	10+	C1
T061	Fraxinus excelsior x2 - Weeping Common Ash	15	10	6	8	8	201	380	2	8	N	EM	Fair	Fair	Restricted survey due to brambles and trees growing in hedge Dead wood	10+	C2
T062	Fraxinus excelsior - Common Ash	14	9	7	8	8	201	420	1	5	W	Dead	Fair	Dead	Tree is dead	Dead	U
T063	Quercus robur - Pedunculate Oak	15	8	8	9	8	214	1100	1	5	NE	M	Good	Good	Restricted survey due to being in hedge line Fractured limbs - storm damage with exposed decaying heartwood and good reaction growth forming around wound Dead wood	40+	B2
T064	Fraxinus excelsior - Common Ash	14	5	6	6	5	95	480	1	5	S	EM	Fair	Poor	Reactive growth Dieback - poor foliage Dead wood	<10	C3
T065	Fraxinus excelsior - Common Ash	12	5	4	5	4	64	350	1	5	SE	SM	Good	Good	Minor deadwood	20+	B2

Note: This survey is based on a brief visual inspection from the ground.
It is not intended as a full arboricultural inspection.
- indicates estimated/offsite tree.

Ref. no	Species	Height (m)	Crown spread (m)				Canopy area (sqm)	Stem dia. (mm)	Stem no. at 1.5m	Height of crown clearance (m)	Dir/ height	Age class	Structural Condition	Physiological Condition	General Observations Management Recommendations	Estimated remaining contribution (yrs)	Tree Quality Category (BS5837)
			N	S	E	W											
T066	Fraxinus excelsior - Common Ash	14	5	5	5	4	71	310	1	6	S	EM	Fair	Poor	Included union of stems at ground level Dieback - poor foliage Dead wood Tree in decline No long term future	<10	C3
T067	Quercus robur - Pedunculate Oak	14	8	9	6	4	134	750	1	5	SE	M	Fair	Good	Restricted survey due to ivy on stem Moderate deadwood Crown predominantly to S	40+	B2
T068	Quercus robur - Pedunculate Oak	17	6	10	7	8	188	910	1	7	W	M			Fractured limbs - storm damage 5m W Major Dead wood	40+	B2
T069	Quercus robur - Pedunculate Oak	15	8	9	9	8	227	1000	1	7	NW	M	Fair	Good	Restricted survey due to ivy infestation Fractured limbs - storm damage SW Major Dead wood	40+	B2
T070	Fraxinus excelsior - Common Ash	16	3	11	5	10	165	710	1	6.5	NE	M	Poor	Fair	Dominant stem failed at 7m with decaying heartwood exposed, large lateral to the S has become co-dominant with included union and decay cavity from old pruning wound with good reaction growth forming around wound, crown predominantly to S & W Presence of fungi fruiting bodies on large lateral limb to W with further decay cavities present from old pruning wounds	<10	C2
T071	Fraxinus excelsior - Common Ash	15	7	8	6	8	165	890	1	6	N	M	Fair	Fair	Flared buttress roots, cavities and exposed heartwood on stem from old pruning wounds or tear outs, crown suppressed on E by adjacent tree Deadwood in crown Fractured limbs - storm damage	20+	C1
T072	Quercus robur - Pedunculate Oak	12	8	7	8	4	141	960	1	5	NW	M	Poor	Good	Large cavity at base W, hollow stem, large tear out wound at 5m SW, forming cavity with exposed decaying heartwood with union of crown just above cavity, overall good vigour with good foliage cover with epicormic growth on stem and moderate deadwood in crown	40+	B3
T073	Quercus robur - Pedunculate Oak	6	3	4	2	3	27	200	1	3.5	E	SM	Fair	Good	Restricted survey due to brambles and tree located in hedge	40+	B2
T074	Fraxinus excelsior - Common Ash	10	4	4	3	4	44	240	1	5	N	SM	Fair	Fair	Restricted survey due to brambles and tree located in hedge	20+	C1
T075	Fraxinus excelsior - Common Ash	5	3	3	3	3	28	200	1	3	SW	SM	Fair	Fair	Restricted survey due to being located in hedge	20+	C1
T076	Fraxinus excelsior - Common Ash	10	4	3	4	4	44	250	1	4	SW	SM	Fair	Poor	Dieback - poor foliage Dead wood	<10	C3
T077	Fraxinus excelsior - Common Ash	8	4	3	4	4	44	250	1	4	SE	SM	Fair	Fair	Restricted survey due to brambles and hedge Fractured limbs - flailing damage Minor Dead wood	10+	C2
T078	Fraxinus excelsior - Common Ash	8	4	4	4	4	50	260	1	3	N	SM	Fair	Fair	Restricted survey due to tree located in hedge Minor Dead wood	20+	C2

Note: This survey is based on a brief visual inspection from the ground.
It is not intended as a full arboricultural inspection.
- indicates estimated/offsite tree.

Ref. no	Species	Height (m)	Crown spread (m)				Canopy area (sqm)	Stem dia. (mm)	Stem no. at 1.5m	Height of crown clearance (m)	Dir/ height	Age class	Structural Condition	Physiological Condition	General Observations Management Recommendations	Estimated remaining contribution (yrs)	Tree Quality Category (BS5837)
			N	S	E	W											
T079	Fraxinus excelsior - Common Ash	8	5	5	5	5	79	240	1	5	S	SM	Fair	Fair	Restricted survey due to brambles	10+	C2
T080	Quercus robur - Pedunculate Oak	10	5	5	5	4	71	390	1	5	SE	SM			Fair overall Physiological and Structural condition.	40+	C1
T081	Fraxinus excelsior - Common Ash	9	6	5	6	4	86	300	1	5	S	EM			Restricted survey due to brambles and tree located in hedge Prolific ivy	20+	C2
T082	Populus sp. x30 - Poplar sp.	10	6	5	6	5	95	380	30	5	NE		Fair	Fair	Fair overall Physiological and Structural condition.	20+	C2
T083	Fraxinus excelsior - Common Ash	12	5	7	6	4	94	350	1	7	S	EM	Fair	Fair	Included union of stems at ground level Dieback - poor foliage Dead wood Prolific ivy	<10	C2
T084	Quercus robur - Pedunculate Oak	18	9	8	8	9	227	1050	1	6	SE	M	Fair	Good	Root decay (fungi) N Stem hollow, decayed, cracked with fungi fruiting bodies present SE Fractured limbs - storm damage Dead wood Bark necrosis Prolific ivy	20+	C2
T085	Fraxinus excelsior - Common Ash	15	9	5	7	4	121	500	1	6	S	EM	Fair	Fair	Restricted survey due to tree located in hedge	20+	C1
T086	Fraxinus excelsior - Common Ash	15	4	5	6	4	71	800	1	6	W	M	Fair	Fair	Restricted survey due to tree located in hedge Fractured limb 6m S - exposed decaying heartwood Dead wood	20+	C2
T087	Salix reticulata - Dragon's Claw Willow	15	7	4	8	6	121	720	2	6	W	M	Fair	Fair	Included union of stems at 1.8, collapse limbs 6&7m N crown predominantly to N&E	10+	C2
T088	Salix sp. - Weeping Willow	15	7	1	0	10	63	550	1	7	NW	M	Fair	Fair	Included union of large lateral to NW 3m, stem leaning to NW, crown predominantly to NW	20+	C2
T089	Salix sp. - Weeping Willow	15	10	10	9	9	283	550	1	7	W	M	Fair	Fair	Included union of stems at ground level, collapse limb at 5m SW, moderate deadwood	20+	C2
T090	Salix sp. - Weeping Willow	14	4	9	5	4	92	580	1	10	S	M	Fair	Fair	Restricted survey due to ivy infestation on stem	20+	C2
T091	Salix sp. - Weeping Willow	12	9	4	5	7	123	800	2	7	SW	M	Fair	Fair	Decay at base of stem SW, included union of stems at 1.8m, stem leaning to N & W, ivy on stem	<10	C3
T092	Quercus robur - Pedunculate Oak	18	9	10	9	10	284	900	1	7	SE		Good	Good	Dead wood	40+	B1
T093	Fraxinus excelsior - Common Ash	10	4	5	5	4	64	750	1	5	SW	M	Fair	Fair	Restricted survey due to brambles, ivy infestation and hedge, Historic failure of stem at 5m regrowth has good vigour	20+	C2
T094	Fraxinus excelsior - Common Ash	12	4	5	4	4	57	650	2	6	SW	M	Fair	Poor	Restricted survey due to brambles, ivy infestation and hedge, included union of stems at 1.6m, sever dieback in crown, no long term future	<10	C3
T095	Acer campestre - Field Maple	9	5	4	5	5	71	280	2	6	NW	EM	Fair	Good	Included union of stems at 3m, Fair overall Physiological and Structural condition.	30+	C1

Note: This survey is based on a brief visual inspection from the ground.
It is not intended as a full arboricultural inspection.
- indicates estimated/offsite tree.

Ref. no	Species	Height (m)	Crown spread (m)				Canopy area (sqm)	Stem dia. (mm)	Stem no. at 1.5m	Height of crown clearance (m)	Dir/ height	Age class	Structural Condition	Physiological Condition	General Observations Management Recommendations	Estimated remaining contribution (yrs)	Tree Quality Category (BS5837)
			N	S	E	W											
T096	Fraxinus excelsior - Common Ash	16	7	9	9	8	214	800	2	7	SE	M	Fair	Poor	Restricted survey due to ivy infestation on stem, bifurcation at 4m, dieback in crown, decay cavities from old pruning wounds present in crown, deadwood, no long-term future	<10	C3
T097	Fraxinus excelsior - Common Ash	15	4	8	8	8	151	800	1	6	W	M			Restricted survey due to brambles and ivy on stem, Dead wood	10+	C2
T098	Fraxinus excelsior - Common Ash	10	2	4	3	4	33	220	1	5	SW	SM	Fair	Fair	Included union of stems at ground level Dead wood	20+	C2
T099	Fraxinus excelsior x3 - Weeping Common Ash	12	4	4	4	4	50	450	3	4	SW	SM	Fair	Fair	Restricted survey due to brambles and hedge Dead wood	20+	C2
T100	Fraxinus excelsior - Common Ash	8	2	2	2	2	13	640	1	2	W	M	Poor	Fair	Stem/limb decay, stem failed at 6m, epicormic growth on stem Worth retaining as habitat	<10	C3
T101	Fraxinus excelsior - Common Ash	8	4	4	4	3	44	380	1	4	E	SM	Fair	Fair	Restricted survey due to ivy infestation on stem and tree located in hedge Some die back in upper crown	10+	C2
T102	Fraxinus excelsior - Common Ash	16	7	8	8	7	177	800	1	6	S	M	Fair	Good	Ivy infestation restricting survey Deadwood	20+	B2
T103	Quercus robur - Pedunculate Oak	15	4	8	7	7	132	800	1	5	NW	M			Central leader historic failure at 6m with exposed heartwood, ivy establishing on stem, crown has good vigour with minor deadwood	40+	B2
T104	Quercus robur - Pedunculate Oak	14	5	7	7	5	113	800	1	5	SE	M	Physical Defect	Good	Restricted survey due to heavy ivy infestation Large limb failure at 3m W with exposed decaying heartwood wood Major deadwood	20+	C1
T105	Quercus robur - Pedunculate Oak	14	8.5	7	5	6.5	140	1000	2	5	E	M	Fair	Good	Basal decay with cavity on E side of stem, smaller cavity on W side of stem, bifurcation at 2.5m, old pruning wound on S stem at 3m with exposed heartwood good reaction growth forming around wound further wound with exposed heartwood at 4m with good reaction growth forming around wound major deadwood over all good vigour	40+	B2
T106	Fraxinus excelsior - Common Ash	10	3	3	3.5	2	26	500	1	3	NW	M	Fair	Poor	Restricted survey due to tree located in hedge, Historic stem failure at 2m, exposed decaying heartwood on W side stem probably caused by failure, dieback of regrowth	<10	C3
T107	Fraxinus excelsior - Common Ash	14	6	8	8	9	187	430	1	6	W	M	Fair	Good	Trifurcation at ground level, Moderate deadwood	20+	C1
T108	Fraxinus excelsior - Common Ash	16	8	8	7	9	201	730	1	6	SW	M	Fair	Poor	Sparce foliage cover, moderate deadwood in crown	10+	C2
T109	Quercus robur - Pedunculate Oak	16	7.5	10	8	10	247	970	1	6	NE	M	Good	Good	Old pruning wound on stem at 1.3m NW with exposed heartwood and at 2m N with exposed heartwood Fractured limbs - storm damage in lower crown over site, major deadwood	40+	B2

Note: This survey is based on a brief visual inspection from the ground.
It is not intended as a full arboricultural inspection.
- indicates estimated/offsite tree.

Ref. no	Species	Height (m)	Crown spread (m)				Canopy area (sqm)	Stem dia. (mm)	Stem no. at 1.5m	Height of crown clearance (m)	Dir/ height	Age class	Structural Condition	Physiological Condition	General Observations Management Recommendations	Estimated remaining contribution (yrs)	Tree Quality Category (BS5837)
			N	S	E	W											
T110	Fraxinus excelsior - Common Ash	16	8	9	9	9	240	1000	2	7	W	M	Fair	Good	Bifurcation at 1.6m , cavity at base of stem at ground level S, further cavity at 1m S, Fractured limbs - storm damage 5m N Moderate deadwood	20+	B2
T111	Fraxinus excelsior - Common Ash	15	8	8	8	7	188	900	1	6	N	M	Fair	Fair	Large cavity on stem from ground level to 3m with exposed decaying heartwood and good reaction growth forming Moderate deadwood Stem hollow	10+	C2
T112	Fraxinus excelsior - Common Ash	18	9	11	12	10	346	1150	1	6.5	S	M	Fair	Good	Stem hollow, decayed, Fractured limbs - storm damage N Good vigour	20+	B2
T113	Quercus robur - Pedunculate Oak	6	4	4	3	4	44	330	1	2	S	SM	Good	Good	Good overall Physiological and Structural condition.	40+	C1
T114	Fraxinus excelsior - Common Ash	16	9	9	9	7	226	800	1	6	SW	M	Physical Defect	Fair	Restricted survey due to brambles Cavity on stem at 3m W Fractured limbs - storm damage Dead wood	10+	C2
T115	Fraxinus excelsior - Common Ash	14	4	4	4	3	44	320	2	4	S	SM	Fair	Fair	Bifurcation at ground level.	20+	C1
T116	Quercus robur - Pedunculate Oak	14	5	7	5	6	104	650	1	3	S	M	Fair	Good	Old pruning wounds in crown exposed heartwood with good reaction growth forming around wounds Historic storm damage in crown N 7m Deadwood	40+	C1
T117	Quercus robur - Pedunculate Oak	12	7	10	10	7	227	1150	1	3	W	M	Fair	Fair	Dead wood	40+	C1
T118	Fraxinus excelsior - Common Ash	15	6	9	6.5	6	147	770	1	5	N	M	Fair	Fair	Low branches (3m) obstruct pedestrian access. Root damage Stem/limb decay with fruiting bodies present Dieback - poor foliage Dead wood	10+	C2
T119	Fraxinus excelsior - Common Ash	15	7	7	9	5	154	850	1	5.5	SW	M	Fair	Fair	Restricted survey due to Prolific ivy Low branches (3m) obstruct pedestrian access. Dead wood	10+	C2
T120	Ilex aquifolium - Common Holly	5	3	3	3	3	28	500	1	2	N	M	Fair	Good	Restricted survey due to stem located in hedge	20+	C2
T121	Quercus robur - Pedunculate Oak	16	7	8	9	7	188	800	1	5	S	M	Good	Good	Ivy infestation on stem to 5m Low crown 3m Minor deadwood	40+	B2
T122	Quercus robur - Pedunculate Oak	13	7.5	7	7	7.5	165	610	1	4	S	EM	Good	Good	Good overall Physiological and Structural condition.	40+	B2
T123	Acer campestre - Field Maple	8	3	4	4	4	44	300	2	2.5	S	M	Fair	Fair	Fair overall Physiological and Structural condition.	20+	C1

Note: This survey is based on a brief visual inspection from the ground.
It is not intended as a full arboricultural inspection.
- indicates estimated/offsite tree.

Ref. no	Species	Height (m)	Crown spread (m)				Canopy area (sqm)	Stem dia. (mm)	Stem no. at 1.5m	Height of crown clearance (m)	Dir/ height	Age class	Structural Condition	Physiological Condition	General Observations Management Recommendations	Estimated remaining contribution (yrs)	Tree Quality Category (BS5837)
			N	S	E	W											
T124	Quercus robur - Pedunculate Oak	9	4	6	5	6	86	800	1	4	E	M	Fair	Fair	Restricted survey due to brambles Crown retrenchment with significant deadwood Decay cavities on stem Stem had exposed, decay pockets Large lateral limb to W has split	20+	C1
T125	Quercus robur - Pedunculate Oak	14	5.5	7	6.5	6	123	950	1	5	NE	M	Poor	Fair	Low branches (5.2) obstruct vehicle access. Stem/limb decay Stem hollow, decayed, with fungi fruiting bodies present Dead wood	20+	C2
T126	Quercus robur - Pedunculate Oak	14	8	7.5	7.5	9.5	207	980	1	5	SW	M	Fair	Good	Dead wood	40+	B2
T127	Fraxinus excelsior - Common Ash	10	5.5	5	6	5	91	300	1	4	N	SM	Fair	Fair	Trifurcation of stems at 0.5m with some inclusion of stem unions Low branches (5.2) obstruct vehicle access.	20+	C2
T128	Fraxinus excelsior - Common Ash	15	4	7	8	6	121	900	1	5	S	M	Poor	Poor	Root decay (fungi) Stem decayed, Limb decay Fractured limbs - storm damage Dieback - poor foliage Dead wood	<10	C3
T129	Pinus sylvestris - Scots Pine	17	5	4	5	3	57	510	1	10	W	EM			Fractured limbs - storm damage	40+	C1
T130	Acer campestre - Field Maple	12	5	1	4	4	38	300	1	5	N		Fair	Fair	Fair overall Physiological and Structural condition.	20+	C2
T131	Ilex aquifolium - Common Holly	12	3	1	3	1	13	330	1	2	E	M	Fair	Fair	Fair overall Physiological and Structural condition.	40+	C1
T132	Ilex aquifolium - Common Holly	12	3	3	1	2	14	400	1	3	W	M	Fair	Fair	Bifurcation at 0.5m included union	40+	C2
T133	Quercus robur - Pedunculate Oak	20	11	8.5	9	9.5	283	950	1	6	NW	M			Dead wood	40+	B2
T134	Fraxinus excelsior - Common Ash	14	7	8	4	5	106	800	1	4.5	S	M	Poor	Poor	Restricted survey due to brambles and ivy Poor overall Physiological and Structural condition. Stem/limb decay with fungi fruiting bodies present Dieback - poor foliage Dead wood Prolific ivy	<10	C3
T135	Fraxinus excelsior - Common Ash	14	3	5	5	1	38	800	1	6	NE	M	Poor	Fair	Restricted survey due ivy infestation Stem hollow, decayed, with large split at 5m E Fractured limbs - storm damage Dead wood	<10	C3
T136	Fraxinus excelsior - Common Ash	8	5	3	3	3	38	920	1	2	S	M	Poor	Fair	Restricted survey due to stem located in hedge and brambles Stem/limb decay Stem hollow, decayed, cracked (inc. shear cracks) Fractured limbs - storm damage	<10	C3
T137	Fraxinus excelsior - Common Ash	8	2	4	4	2	28	200	1	3	S	SM	Fair	Fair	Restricted survey due to stem located in hedge Fair overall Physiological and Structural condition.	20+	C2

Note: This survey is based on a brief visual inspection from the ground.
It is not intended as a full arboricultural inspection.
- indicates estimated/offsite tree.

Ref. no	Species	Height (m)	Crown spread (m)				Canopy area (sqm)	Stem dia. (mm)	Stem no. at 1.5m	Height of crown clearance (m)	Dir/height	Age class	Structural Condition	Physiological Condition	General Observations Management Recommendations	Estimated remaining contribution (yrs)	Tree Quality Category (BS5837)
			N	S	E	W											
T138	Fraxinus excelsior - Common Ash	6	3	2	2	3	20	180	1	3.5	W	SM	Fair	Fair	Restricted survey due to stem located in hedge Fair overall Physiological and Structural condition.	20+	C2
T139	Quercus robur - Pedunculate Oak	16	7	9	9	7	201	900	1	5	E	M	Fair	Fair	Old pruning wound at 3m W exposed heartwood with good reaction growth forming around wound, further old pruning wound on stem at 6m E Epicormic growth on stem Dead wood	40+	B2
T140	Fraxinus excelsior - Common Ash	6	3	3	3	2	24	200	1	4	S	SM	Fair	Fair	Restricted survey due to stem located in hedge Fair overall Physiological and Structural condition.	20+	C1
T141	Quercus robur - Pedunculate Oak	20	7	11	9	11	283	1000	1	7	NE	M	Fair	Good	Hollowing of buttress root SW Old pruning wound on stem 4m NW with exposed heartwood, Good reaction wood forming around wound and established epicormic growth Further historic pruning wounds on stem at 7m NW Fractured limb - storm damage 10m NE Dead wood	40+	B2
T142	Fraxinus excelsior - Common Ash	7	2	3	4	3	27	180	1	4.5	E	SM	Fair	Fair	Restricted survey due to stem located in hedge Minor deadwood	20+	C1
T143	Fraxinus excelsior - Common Ash	6	2	4	4	3	33	200	1	4	E	SM	Fair	Fair	Restricted survey due to stem located in hedge and ivy infestation Minor deadwood	20+	C2
T144	Fraxinus excelsior - Common Ash	8	4	4	4	4	50	220	1	4.5	W	SM	Fair	Fair	Fair overall Physiological and Structural condition.	20+	C1

Note: This survey is based on a brief visual inspection from the ground.
It is not intended as a full arboricultural inspection.
- indicates estimated/offsite tree.