

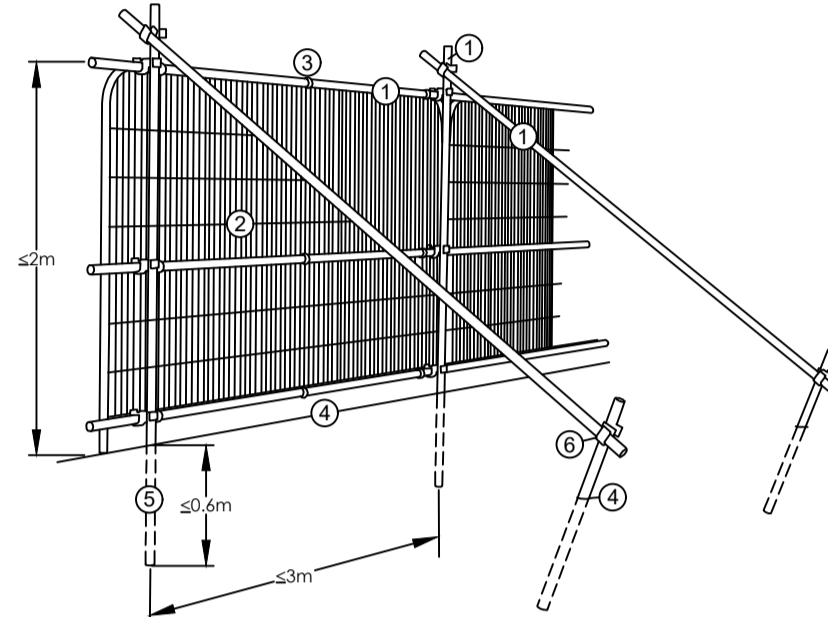
TREE PROTECTION NOTES:
 'Trees in relation to design demolition and construction' BS5837:2012
 1.0 PRIOR TO COMMENCEMENT OF WORKS:

1.1 PRIOR TO COMMENCEMENT: all trees that are being retained onsite shall be protected by barriers and / or ground protection before any materials or machinery are brought onto the site, and before any demolition, development or stripping of soil commences. The 'Root Protection Area' (RPA) associated with existing trees designated for retention shall be protected from damage by erection of scaffold framework barriers in accordance BS 5837:2012 Figure 2 including where specified appropriate ground protection.

1.2 EXTENT OF ROOT PROTECTION AREA (RPA): as shown on the Tree Protection Plan (TPP) the RPA is generally to be in accordance with Annex D, Table D.1 'Root Protection Area' - as an area equivalent to a circle radius 12 times the stem diameter (single stem trees) or based on the combined stem diameter for multistem trees (trees with more than one stem arising below 1.5m above ground level) refer to Clause 4.6.

1.3 TREE PROTECTION BARRIER: a vertical and horizontal scaffold framework, well braced to resist impacts as illustrated below (refer to Figure 2 of BS5837:2012). The vertical tubes should be spaced at a maximum interval of 3 metres and driven securely into the ground. Care should be taken to avoid underground services and contact with structural roots. In the presence of underground services, retained hard surfacing or where special circumstances dictate an alternative specification as illustrated in Figure 3 of BS5837:2012 may be acceptable subject to agreement with the project arboriculturalist and the local planning authority.

All weather site notices should be attached to the barrier with words such as 'CONSTRUCTION EXCLUSION ZONE - NO ACCESS'. Once installed barriers and ground protection shall be not be removed or altered without prior approval of the project arboriculturalist and where necessary approval from the local planning authority.



1. Standard scaffold poles
2. Heavy gauge 2m tall galvanised tube and weld mesh infill panels
3. Panels secured to uprights and cross members with wire ties
4. Ground Level
5. Uprights driven into ground until secure (minimum depth 0.6m)
6. Standard scaffold clamps

2.0 ADDITIONAL PRECAUTIONS:
 2.1 Planning of site operations should take sufficient account of wide or tall loads, or plant with booms, jibs or counterweights (including drilling & piling rigs) in order that they can operate without coming into contact with retained tree. The transit or traverse of plant in proximity to trees shall be conducted under supervision of a banksman to ensure adequate clearance from trees is maintained at all times. Access facilitation pruning as agreed with the project arboriculturalist and/or local authority should be undertaken where necessary to maintain clearance. NB Works to trees protected by a Tree Preservation Order or within a Conservation Area will need approval by the local authority.

2.2 Any materials whose accidental spillage would cause damage to a tree should be stored and handled well away from the outer edge of its RPA e.g. concrete mixings, diesel oil and vehicle washings. Allowances shall be made for sloping ground to avoid damaging materials running towards retained trees.

2.3 Fires on sites should be avoided. Where they are unavoidable, they should not be lit in a position where heat could affect foliage or branches. The potential size of a fire and wind direction should be taken into account when determining its location, and should be attended at all times until safe to leave.

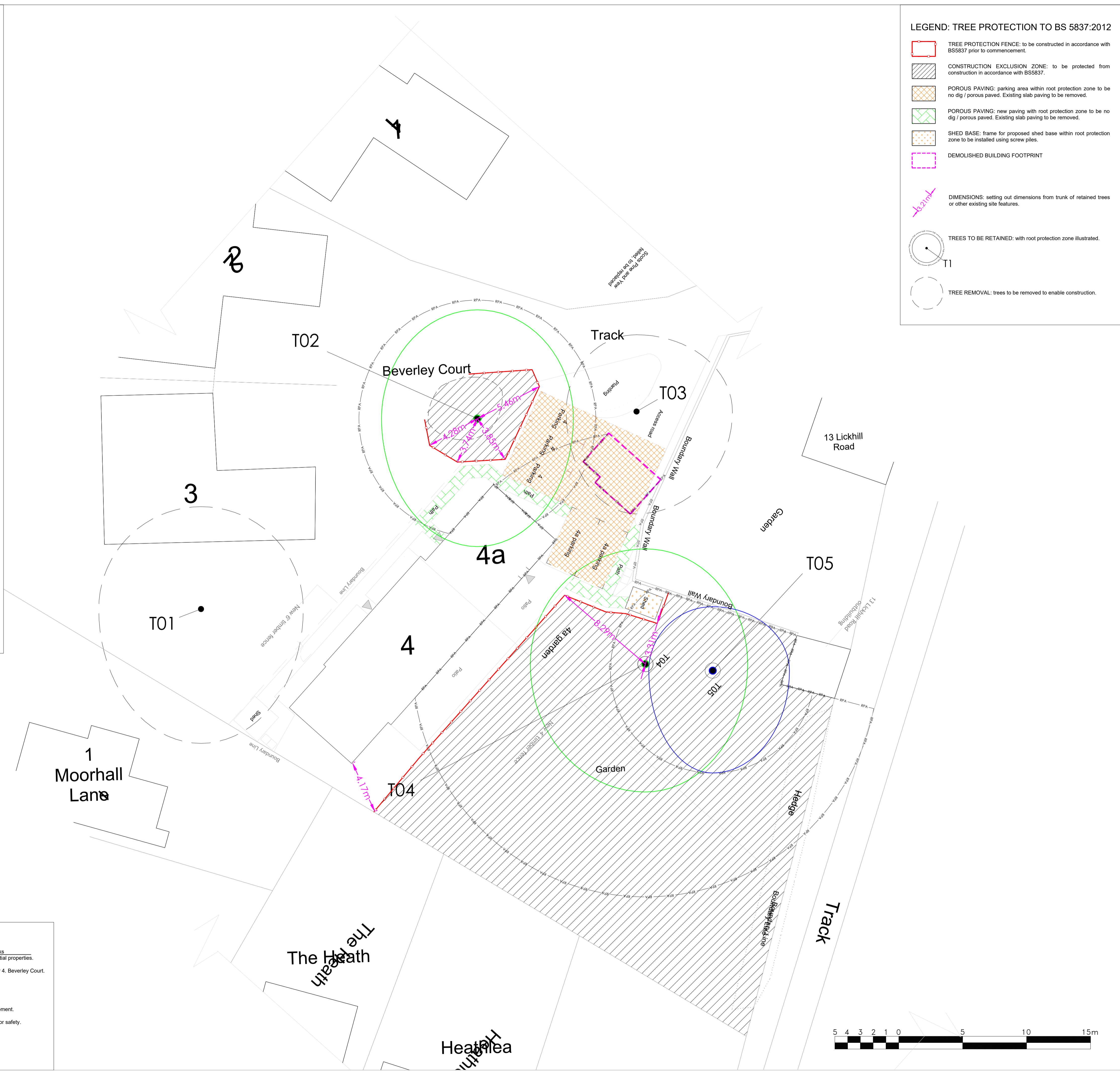
2.4 Trees are not to be used as anchorages for equipment, or for other purposes. Notice boards, telephone cables, or other services should not be attached to any part of the tree.

2.5 The dumping of spoil or rubbish, placing of temporary accommodation and storage of materials within the root protection area is prohibited.

2.6 The change of ground level, excavating, stripping or disturbing topsoil within the RPA is prohibited.

SCHEDULE OF TREE WORKS:

No.	Species	Proposed Works	Justification for works
T01	Deodar cedar	Remove to ground level & plant replacement.	Proximity to residential properties.
T02	Silver lime	Remove low hanging limbs to West back to scaffold limbs. Prune from building to reduce canopy to South by 2m to nearest growth point. Crown lift / raise low canopy to give 5 metre clearance.	Proximity to number 4, Beverley Court.
T03	English yew	Remove to ground level & plant replacement.	To facilitate development.
T04	Silver Lime	Sever ivy, Raise canopy to North away from wires. Remove deadwood and debris from base.	To protect wires & for safety.
T05	English yew	Sever ivy, remove debris from base.	



LEGEND: TREE PROTECTION TO BS 5837:2012

- TREE PROTECTION FENCE: to be constructed in accordance with BS5837 prior to commencement.
- CONSTRUCTION EXCLUSION ZONE: to be protected from construction in accordance with BS5837.
- POROUS PAVING: parking area within root protection zone to be no dig / porous paved. Existing slab paving to be removed.
- POROUS PAVING: new paving with root protection zone to be no dig / porous paved. Existing slab paving to be removed.
- SHED BASE: frame for proposed shed base within root protection zone to be installed using screw piles.
- DEMOLISHED BUILDING FOOTPRINT
- DIMENSIONS: setting out dimensions from trunk of retained trees or other existing site features.
- TREES TO BE RETAINED: with root protection zone illustrated.
- TREE REMOVAL: trees to be removed to enable construction.

This drawing and the design it depicts are copyright and may not be copied or reproduced without written permission from Bea Landscape Design Ltd. No liability will be accepted for amendments made by others. This drawing is to be read in conjunction with the landscape specification and other relevant drawings.
 Contains Ordnance Survey Data © Crown Copyright and Database Right 2021. © Crown Copyright. All rights reserved 100018739.
 Refer any query to office of origination.

rev	date:	amendments:	alt:
(-)	(00/00/0000)	(.....)	(-)



client:
MR T ROGERS

project:
No.4 BEVERLEY COURT
STOURPORT-ON-SEVERN

title:
TREE PROTECTION PLAN

status:
PLANNING

date: JAN'22	drawn: E.C.H	number: 21-126-P-03
scale@A1: 1:150	checked: T.G-W	revision: (-)

Bea Landscape Design Ltd
 132A The Westlands, Compton Road,
 Wolverhampton, WV3 9QB
 T: 01902 424 950 / 01902 425 001
 E: info@bealandscape.co.uk
 W: www.bealandscape.co.uk

