

**KEY**

Perimeter fencing to be Triton 240 fencing system by HERAS. Panel height 2330mm. Grey finish to 'Fencing Location 1' (final RAL T.B.D) and RAL 6005 (moss green) to all fencing in 'Fencing Location 3'. Posts 3100mm long for inserting into new concrete surround.

**GOOGLE IMAGE**



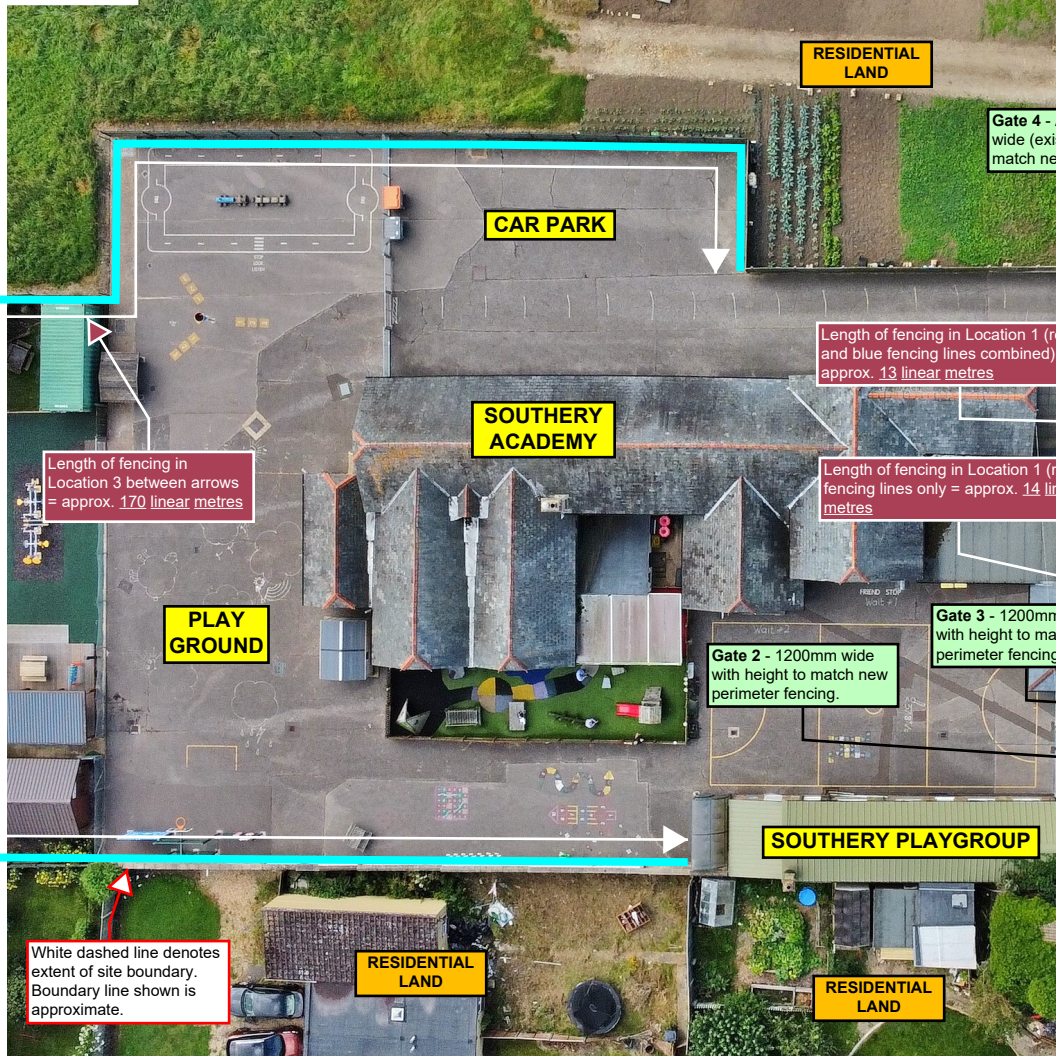
**KEY**

1 x 2.3 metre high powder coated (green) welded galvanised mesh single manual swing pedestrian gate with sliding closer suitable for padlock and low level vertical drop bolt for 'hold open' position during school hours. Gate will remain locked whilst school site is closed. Clear opening width when gate is in 'hold open' position to be no less than 1200mm.

Perimeter fencing to be Triton 200 fencing system by HERAS. Panel height 1930mm. Grey finish - final RAL T.B.D). Posts 2700mm long for inserting into new concrete surround.

1 x self-closing 2.4 metre high powder coated (green) welded galvanised mesh single swing pedestrian gate featuring magnetic lock. On/off key switch for manual use/system override fitted to School side of gate. Gate to include horizontally sliding closing bar (suitable for padlock) and low level vertical drop bolt for 'hold open' position when access control is disabled. Door to be inward opening. Magnetic lock linked to Office/Reception in both Academy and detached Playgroup. Access controlled via video and audio intercom. Clear opening width when gate is in open position to be no less than 1200mm.

**DRONE IMAGE**



1x self-closing powder coated power operated double leaf vehicular swing gate by HERAS (B300). Bar infill. Grey finish - RAL TBD. Height to match new fencing. Gates to include centre stop. NO photocell on public side. Operation on public side only via audio and video intercom (office activate opening) or via keypad code using access control (9). Vehicular gate to have magnetic lock open and closed facility. Gates NOT to automatically open in event fire alarm is activated. Gate operated by vehicular motion sensor on school side only. Gate to be fitted with surface mounted fireman switch accomodating standard Fireman Drop Key. Gates moved further into site than existing by circa 2 metres. Final position of gates to be determined on site.

1 x 2.3 metre high powder coated (green) welded galvanised mesh double manual swing vehicular gate with sliding closer suitable for padlock and low level vertical drop bolts for 'hold open' and closed positioning. Gate will remain locked at all times unless opened by site staff. Academy to supply local Fire Authority with a padlock key. Width of gate to match existing.

**Project**

Remedial Works to Internal Floors, Replacement of Fencing, Replacement of Windows and Associated Works.

**Site Address**

Southery Academy. Westgate Street, Southery, Downham Market, Norfolk. PE38 0PA

**Drawing Title**

Site Plan Showing Proposed Fencing Plan, Including Measurements.

**Client**

Eastern Multi-Academy Trust (EMAT)

**Date**

Oct 2021

**Scale**

N.T.S

**Drawing No:**

D03339/21/1/P03

**DESCRIPTION OF WORKS STATED IN KEY REQUIRES EXISTING FENCING PROVISIONS ADJACENT WESTGATE STREET TO BE FULLY REMOVED. IN ALL OTHER INSTANCES, NEW FENCING TO BE INSTALLED ALONGSIDE EXISTING FENCING/WALLING AS BOUNDARY OWNERSHIP IS UNKNOWN. PRIOR TO WORKS COMMENCING. EMAT TO TRY AND ESTABLISH BOUNDARY OWNERSHIP WITH THE VIEW OF AGREEING FOR EXISTING BOUNDARIES TO BE REMOVED WHERE PRACTICAL TO DO SO.**

This drawing supports the Planning Application for the replacement of boundary fencing and gates and replacement of some windows. This drawing must be read in conjunction with all other Planning related drawings.