

## SportPro LED



Project: 60m x 20m Arena  
SportPro LED 260  
6m high lighting columns  
Maintenance factor 0.9.  
Measurement grid 5m x 5m

### SPORTS LIGHTING UK

Glenhill House  
Carleton Road  
Poynton, Cheshire, SK12 1TL  
Tel: 01625 876716

[www.sportslightinguk.co.uk](http://www.sportslightinguk.co.uk)



Date:=04/12/2020

Sports Lighting UK-Independent Software analysis AGI32. The values are based on exact calculations and area dimensions indicated.  
Based upon luminaire and column positions shown, reflection factors where applicable and assumed full rated voltage



The Future of LED Sports Lighting

## SportPro LED is the ultimate in LED sports floodlighting

Using critically controlled LED lighting arrays the SportPro LED floodlight produces optimum lighting levels whilst reducing light spillage and glare.

These floodlights are design for use in difficult lighting situations where dark skies compliance and light spillage must be kept to a minimum.

The SportPro LED floodlight uses soft start technology to reduce the switched load impact and increase component life.

A true retrofit LED floodlight to replace the old style HID metal halide lights.

The SportPro can offer a dimmable lighting solution to provide full match or practice lighting levels helping to further reduce running costs.

Long life and high reliability with a five year warranty as standard and an expected life of over 50,000hrs.



The SportPro LED uses multi-optic technology to fine tune the light distribution to provide optimum coverage.

- Energy savings of over 50% can be made when replacing HID floodlights.
- Ultracool system reduces the internal floodlight temperature increasing component life.
- All internal and external fixings are made from stainless steel
- With a High quality powder coat finish and an IP67 rating the SportPro LED floodlight is prepared for the harshest of environments.



Telephone : 01625 876716  
 Email sales@sportslightinguk.co.uk  
 Web : sportslightinguk.co.uk

Project: 60m x 20m Arena  
 SportPro LED 260  
 6m high lighting columns  
 Maintenance factor 0.9.  
 Measurement grid 5m x 5m

## SPORTS LIGHTING UK

Glenhill House  
 Carleton Road  
 Poynton, Cheshire, SK12 1TL  
 Tel: 01625 876716

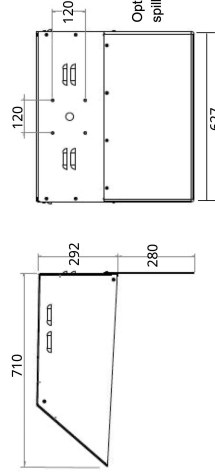
[www.sportslightinguk.co.uk](http://www.sportslightinguk.co.uk)



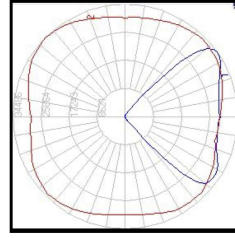
**Luminaire Data**

Lamp Type, LED ( light emitting diode )  
 Colour temperature, 4000k / 5000k  
 Voltage, 90 - 305V (230v)  
 Net Weight ,21kg  
 Housing Colour, RAL6007  
 Luminaire Output, 260w - 880w  
 LED Lumen Output, >160lpw  
 CRI >70  
 High Power Factor >0.96  
 High Efficiency >0.95  
 IP67  
 Typical life expectancy, 50,000hrs

- Uses the latest multi optic technology.
- Ultra High Efficiency LED arrays.
- Temperature / surge & short circuit protected.
- 5 Year Warranty.
- High LED Lighting uniformity.
- Stainless Steel Fixings.
- Strong Corrosion Resistant Aluminium Housing.
- High Quality Powder Coat Finish.
- Dimmable 0v - 10v ( with additional cabling )
- Suitable upgrade for 1 & 2Kw HID floodlights.
- Supplied with a universal mounting bracket.



Universal mounting bracket



Polar Intensity Diagram

**Floodlight options :-**

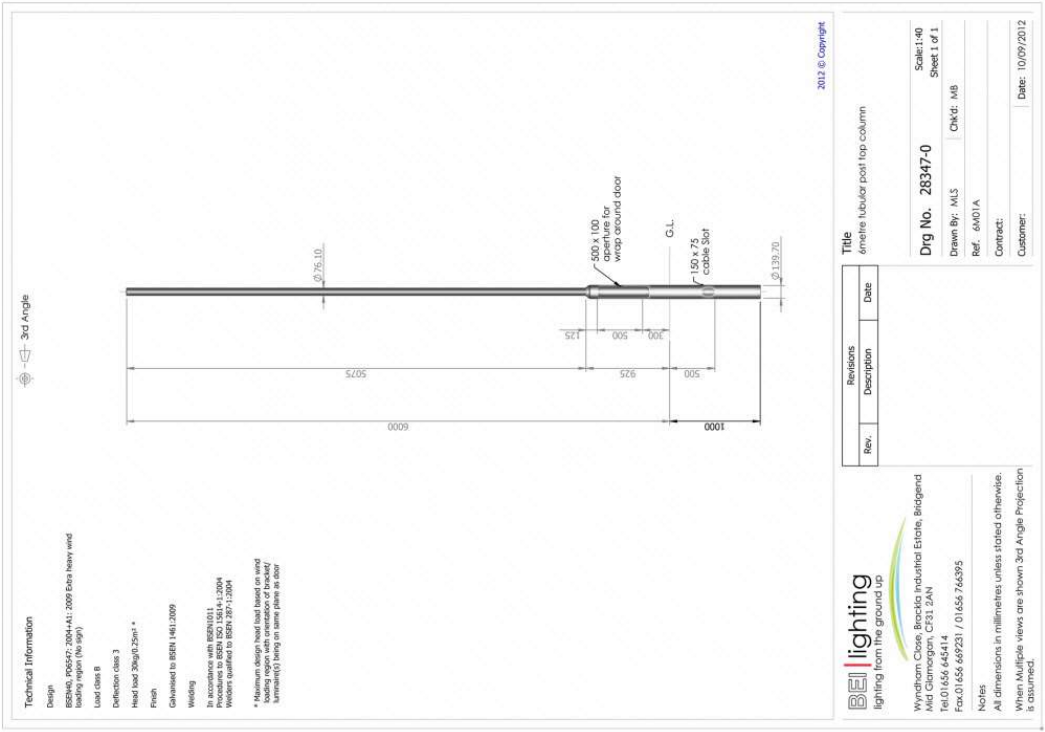
- TP750 - 750w LED >115,200 lumen output
- TP630 - 630w LED > 96,000 lumen output
- TP500 - 500w LED > 76,800 lumen output
- TP380 - 380w LED > 57,600 lumen output
- TP260 - 260w LED > 38,400 lumen output

Telephone : 01625 876716  
 Email sales@sportslightinguk.co.uk  
 Web : sportslightinguk.co.uk

Project: 60m x 20m Arena  
 SportPro LED 260  
 6m high lighting columns  
 Maintenance factor 0.9.  
 Measurement grid 5m x 5m

**SPORTS LIGHTING UK**  
 Glenhill House  
 Carleton Road  
 Poynton, Cheshire, SK12 1TL  
 Tel: 01625 876716  
 www.sportslightinguk.co.uk





Project: 60m x 20m Arena  
SportPro LED 260  
6m high lighting columns  
Maintenance factor 0.9.  
Measurement grid 5m x 5m

**SPORTS LIGHTING UK**  
Glenhill House  
Carleton Road  
Poynton, Cheshire, SK12 1TL  
Tel: 01625 876716  
[www.sportslightinguk.co.uk](http://www.sportslightinguk.co.uk)



Date:=04/12/2020

Sports Lighting UK-Independent Software analysis AGI32. The values are based on exact calculations and area dimensions indicated. Based upon luminaire and column positions shown, reflection factors where applicable and assumed full rated voltage

Luminaire Schedule						
Symbol	Qty	Label	Lumens/Lamp	LLF	Description	Total Watts
☒	8	SportPro-260	38400	0.900	SportPro LED 260	2080

Calculation Summary				
Label	CalcType	Units	Avg	Min/Avg
Horse Arena	Illuminance	Lux	177	0.60

Horse Arena suitable for jumping

No obstructions have been considered in this calculation

The installation has a zero upward light ratio

Light Spillage Isolines shown 1,5,10,20,40lux.

Project: 60m x 20m Arena  
 SportPro LED 260  
 6m high lighting columns  
 Maintenance factor 0.9.  
 Measurement grid 5m x 5m

## SPORTS LIGHTING UK

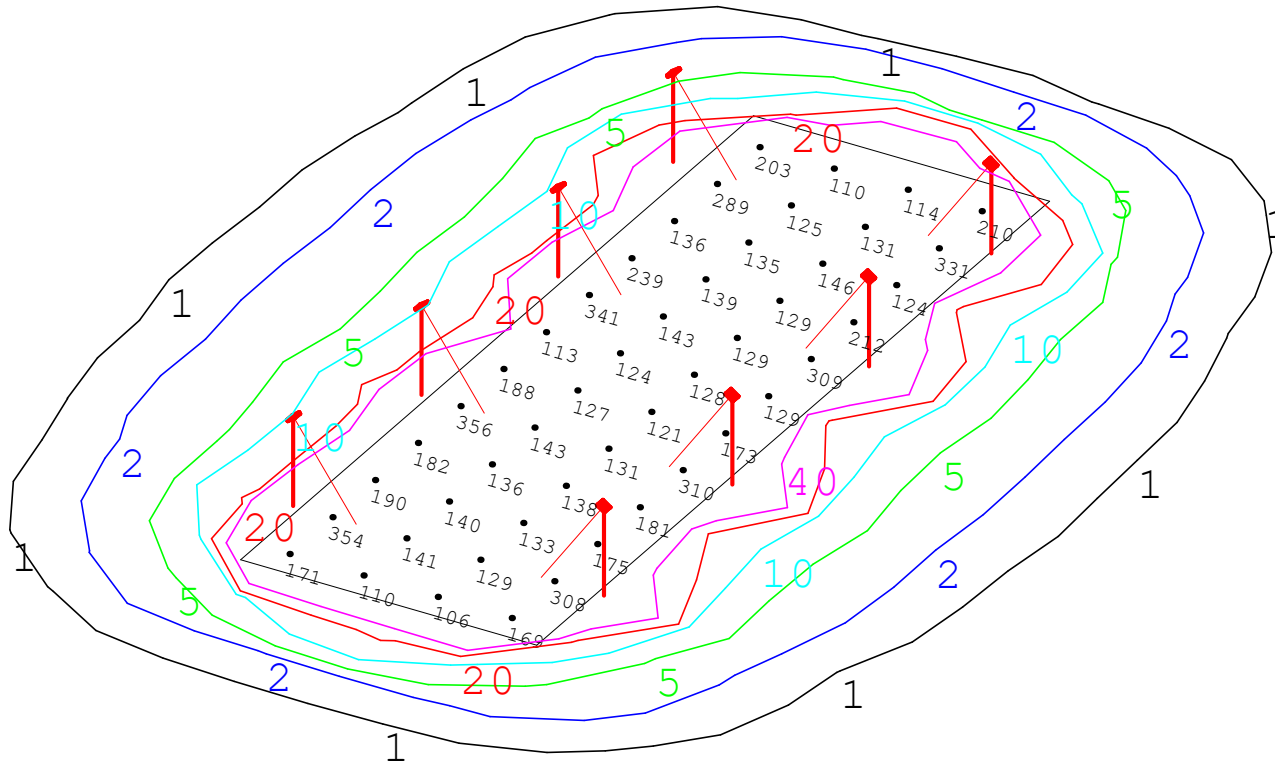
Glenhill House  
 Carleton Road  
 Poynton, Cheshire, SK12 1TL  
 Tel: 01625 876716

[www.sportslightinguk.co.uk](http://www.sportslightinguk.co.uk)



Date:=04/12/2020

Sports Lighting UK-Independent Software analysis AGI32. The values are based on exact calculations and area dimensions indicated.  
 Based upon luminaire and column positions shown, reflection factors where applicable and assumed full rated voltage



Project: 60m x 20m Arena  
 SportPro LED 260  
 6m high lighting columns  
 Maintenance factor 0.9.  
 Measurement grid 5m x 5m

## SPORTS LIGHTING UK

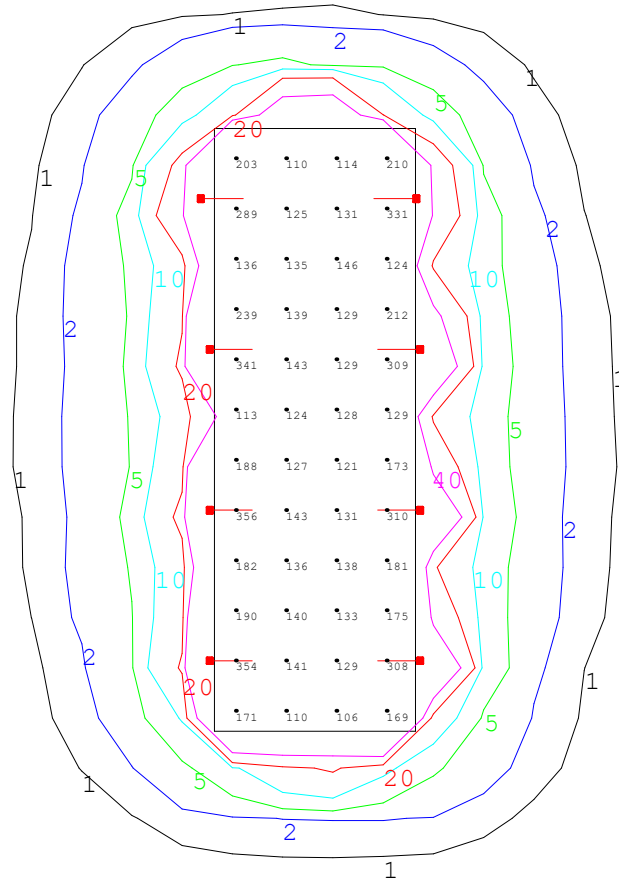
Glenhill House  
 Carleton Road  
 Poynton, Cheshire, SK12 1TL  
 Tel: 01625 876716

[www.sportslightinguk.co.uk](http://www.sportslightinguk.co.uk)



Date:=04/12/2020

Sports Lighting UK-Independent Software analysis AGI32. The values are based on exact calculations and area dimensions indicated. Based upon luminaire and column positions shown, reflection factors where applicable and assumed full rated voltage



Project: 60m x 20m Arena  
 SportPro LED 260  
 6m high lighting columns  
 Maintenance factor 0.9.  
 Measurement grid 5m x 5m

## SPORTS LIGHTING UK

Glenhill House  
 Carleton Road  
 Poynton, Cheshire, SK12 1TL  
 Tel: 01625 876716

[www.sportslightinguk.co.uk](http://www.sportslightinguk.co.uk)



Date:=04/12/2020

Sports Lighting UK-Independent Software analysis AGI32. The values are based on exact calculations and area dimensions indicated.  
 Based upon luminaire and column positions shown, reflection factors where applicable and assumed full rated voltage