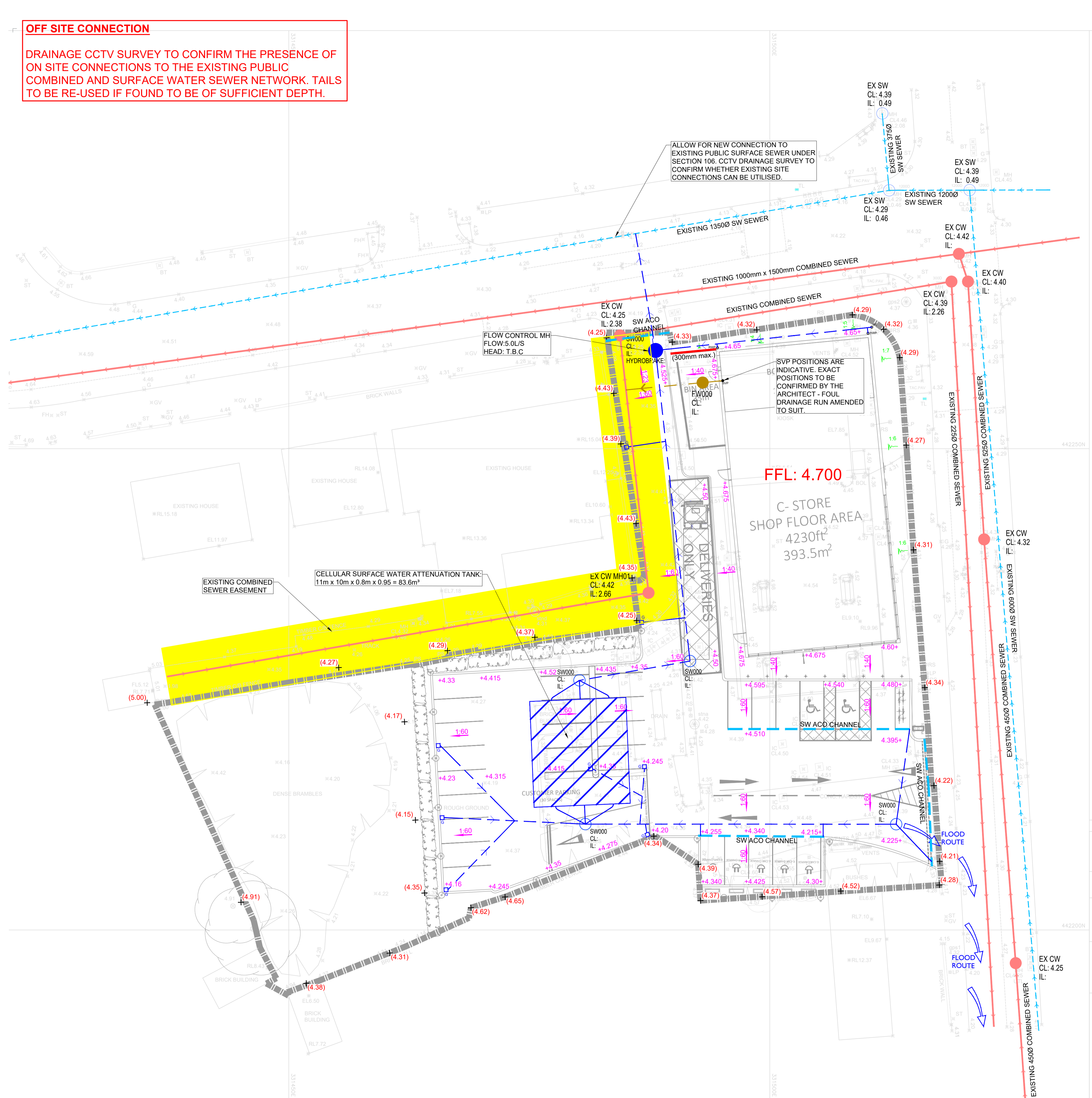


**OFF SITE CONNECTION**

DRAINAGE CCTV SURVEY TO CONFIRM THE PRESENCE OF ON SITE CONNECTIONS TO THE EXISTING PUBLIC COMBINED AND SURFACE WATER SEWER NETWORK. TAILS TO BE RE-USED IF FOUND TO BE OF SUFFICIENT DEPTH.

ALLOW FOR NEW CONNECTION TO EXISTING PUBLIC SURFACE SEWER UNDER SECTION 106. CCTV DRAINAGE SURVEY TO CONFIRM WHETHER EXISTING SITE CONNECTIONS CAN BE UTILISED.



OPERATION AND MAINTENANCE REQUIREMENTS FOR ATTENUATION STORAGE TANKS		
MAINTENANCE SCHEDULE	REQUIRED ACTION	TYPICAL FREQUENCY
REGULAR MAINTENANCE	INSPECT & IDENTIFY ANY AREAS THAT ARE NOT OPERATING CORRECTLY. IF REQUIRED, TAKE REMEDIAL ACTION	MONTHLY FOR 3 MONTHS THEN ANNUALLY
	REMOVE DEBRIS FROM THE CATCHMENT SURFACE (WHERE IT MAY CAUSE RISK TO PERFORMANCE)	MONTHLY
	REMOVE SEDIMENT FROM PRE-TREATMENT ROAD GULLIES & SILT TRAP MANHOLE	MONTHLY FOR 3 MONTHS THEN ANNUALLY OR AS REQUIRED
REMEDIAL ACTIONS	REPAIR/REHABILITATE INLETS, OUTLETS, OVERFLOWS & VENTS	AS REQUIRED
MONITORING	INSPECT/CHECK ALL INLETS, OUTLETS, VENTS & OVERFLOWS TO ENSURE THAT THEY ARE IN GOOD CONDITION & OPERATING AS DESIGNED	ANNUALLY
	CCTV SURVEY INSIDE OF TANK FOR SEDIMENT BUILD-UP & REMOVE IF NECESSARY	AFTER CONSTRUCTION, 1 YEAR, & THEN EVERY 5 YEARS OR AS REQUIRED

**KEY:**

- SW000 CL: IL: 1500, X@m @ 1:X SURFACE WATER MH & DRAINAGE RUN
- FW000 CL: IL: 1500, X@m @ 1:X FOUL WATER MH & DRAINAGE RUN
- EX SW CL: IL: XX0, X@m @ 1:X EXISTING SURFACE WATER MH & DRAINAGE RUN
- EX CW CL: IL: 1500, X@m @ 1:X EXISTING COMBINED WATER MH & DRAINAGE RUN
- EXISTING SEWER EASEMENT
- SW ACO CHANNEL SURFACE ACO CHANNEL
- SURFACE GULLY
- SURFACE RODDING EYE
- RAINWATER PIPE
- SOIL VENT PIPE
- FLOOD ROUTE
- FLOOD ROUTE FOR STORM EVENTS IN EXCESS OF 1 IN 100 YEARS + 40% CLIMATE CHANGE
- PROPOSED BANKING
- PROPOSED LEVELS
- PROPOSED GRADIENTS
- EXISTING BOUNDARY LEVELS
- F.O.E RETENTION

DO NOT SCALE. IF IN DOUBT ASK. DO NOT INTERROGATE CAD BASE

- DRAINAGE NOTES:**
- THIS DRAWING HAS TO BE READ IN CONJUNCTION WITH ALL RELEVANT ARCHITECTS & ENGINEERS DRAWINGS AND SPECIFICATIONS.
  - FOR DRAINAGE DETAILS REFER TO DRAWING P15598-501.
  - FOR LOCATION OF ALL R.W.P.'s & INTERNAL POP-UP'S REFER TO ARCHITECT'S DRAWING. ALL DOWN PIPES TO BE FITTED WITH ACCESS HANDLES ABOVE F.F.L. OR GROUND LEVEL.
  - ALL GULLY CONNECTIONS TO BE 1500 U.O. ALL S.V.P. CONNECTIONS TO BE MINIMUM 1000 OR TO MATCH S.V.P. DOWNPIPE IF GREATER. ALL R.W.P. CONNECTIONS TO BE 1500 OR TO MATCH R.W.P. DOWNPIPE.
  - ALL PIPES UP TO 4500 TO BE UPVC PIPES, PIPES GREATER THAN 4500 TO BE CONCRETE.
  - PIPES UNDER ROADS HAVING 1200mm OR LESS COVER ARE TO BE ENGASED IN CONCRETE IN ACCORDANCE WITH THE MANUFACTURERS RECOMMENDATIONS.
  - MANHOLE COVER LEVELS ARE INDICATIVE AND SHOULD BE SET TO SUIT FINISHED ROAD LEVEL AND CAMBER.
  - ALL EXTERNAL MANHOLES WITHIN ROADS TO BE FITTED WITH LOADCLASS D400 COVERS U.O. ALL EXTERNAL MANHOLES WITHIN SOFT LANDSCAPING TO BE FITTED WITH LOADCLASS B125 COVERS U.O. ALL IN ACCORDANCE WITH BS EN 124:2015 (ALL PARTS).
  - INVERT LEVELS OF EXISTING DRAINS AND MANHOLES TO BE CONFIRMED ON SITE PRIOR TO COMMENCING OPERATIONS. NO EXISTING SEWER MANHOLE TO BE OPENED OR ENTERED WITHOUT THE PERMISSION OF THE LOCAL AUTHORITY DRAINAGE DEPARTMENT AND THE ATTENDANCE OF SEWER PERSON AS REQUIRED.
  - DRAINAGE DESIGN AND INSTALLATION TO BE TO THE SATISFACTION OF THE LOCAL BUILDING CONTROL DEPARTMENT AND TO COMPLY WITH BS EN 752:2017, BS EN 1610:2015, BS EN 12056-1:2000, BS EN 12056-2:2000 and BS EN 12056-3:2000.
  - ADOPTABLE DRAINAGE WORKS TO BE CARRIED OUT IN ACCORDANCE WITH THE LATEST EDITION OF 'SEWERS FOR ADOPTION'.
  - ALL SUDS COMPONENTS TO BE MAINTAINED IN ACCORDANCE WITH CIRIA C 788.
  - SURFACE WATER ATTENUATION GRATES TO BE WAVIN AQUACELL PLUS OR SIMILAR APPROVED. TO BE INSTALLED IN LINE WITH MANUFACTURERS SPECIFICATION.

**SURFACE WATER ATTENUATION**

PROPOSED IMPERMEABLE AREA: 2070m² (0.207 Ha)  
 SITE AREA: 3000m² (0.30 Ha)  
 DISCHARGE RATE: 5.0L/S  
 CELLULAR TANK DIMENSIONS: 11m x 10m x 0.8m x 0.95 = 83.6m³  
 STORM EVENT: 1 IN 100YR + 40% CLIMATE CHANGE

- CDM NOTES**
- ACCESS AND EGRESS TO THE SITE FROM BUSY ROAD.
  - POTENTIAL GROUND INSTABILITY IN DEEP EXCAVATIONS.
  - NO HEAVY PLANT OR STOCK PILES PERMITTED OVER OR WITHIN 3m OF THE CONSTRUCTED TANK.
  - TANK TO BE FULLY PROTECTED FROM SILT AND DEBRIS INGRESS DURING CONSTRUCTION, AND TO BE INSPECTED AND MAINTAINED DURING OPERATION AS DETAILED ABOVE.
  - TANKS NOT DESIGNED TO RESIST UPLIFT UNTIL FULLY BACKFILLED.
  - EXISTING SERVICES IDENTIFIED ON SITE.
  - ADEQUATE SEGREGATION HOARDING REQUIRED TO SEPARATE PUBLIC FROM THE CONSTRUCTION SITE.
  - ADEQUATE MEASURES REQUIRED TO CONTROL NOISE, DUST, FUMES & VIBRATION.
  - POTENTIAL HOT SPOT CONTAMINATION DUE TO PREVIOUS SITE USE.
  - STORM DRAINAGE CONNECTIONS INTO EXISTING SEWERS IN THE HIGHWAY - ADEQUATE RAMS AND SITE CONTROL REQUIRED.
- REFER TO DESIGNERS HAZARD ASSESSMENTS FOR FURTHER DETAILS.

REV.	DATE.	REVISION.	BY.	CHK.
-	-	FIRST ISSUE.	PH	NB

Euro Garages Ltd  
 Proposed Convenience Store  
 Anchorholme, Fleetwood Road, Cleveleys  
 Drainage Layout Plan

**Goodson Associates**  
 Tel: +44 (0)113 369 7925  
 Fax: -  
 Email: leeds@goodsons.com  
 Web: www.goodsons.com  
 Consulting Civil, Structural & Transportation Engineers  
 Fountain House, 4 South Parade,  
 Leeds, LS1 5QX  
 Also at Aberdeen, Edinburgh and Glasgow.

**PLANNING**

DATE CREATED: Dec. '21	SCALE: 1:200 @ A1
CONTRACT No: P15591	DRAWING No: 500
REV: -	REV: -