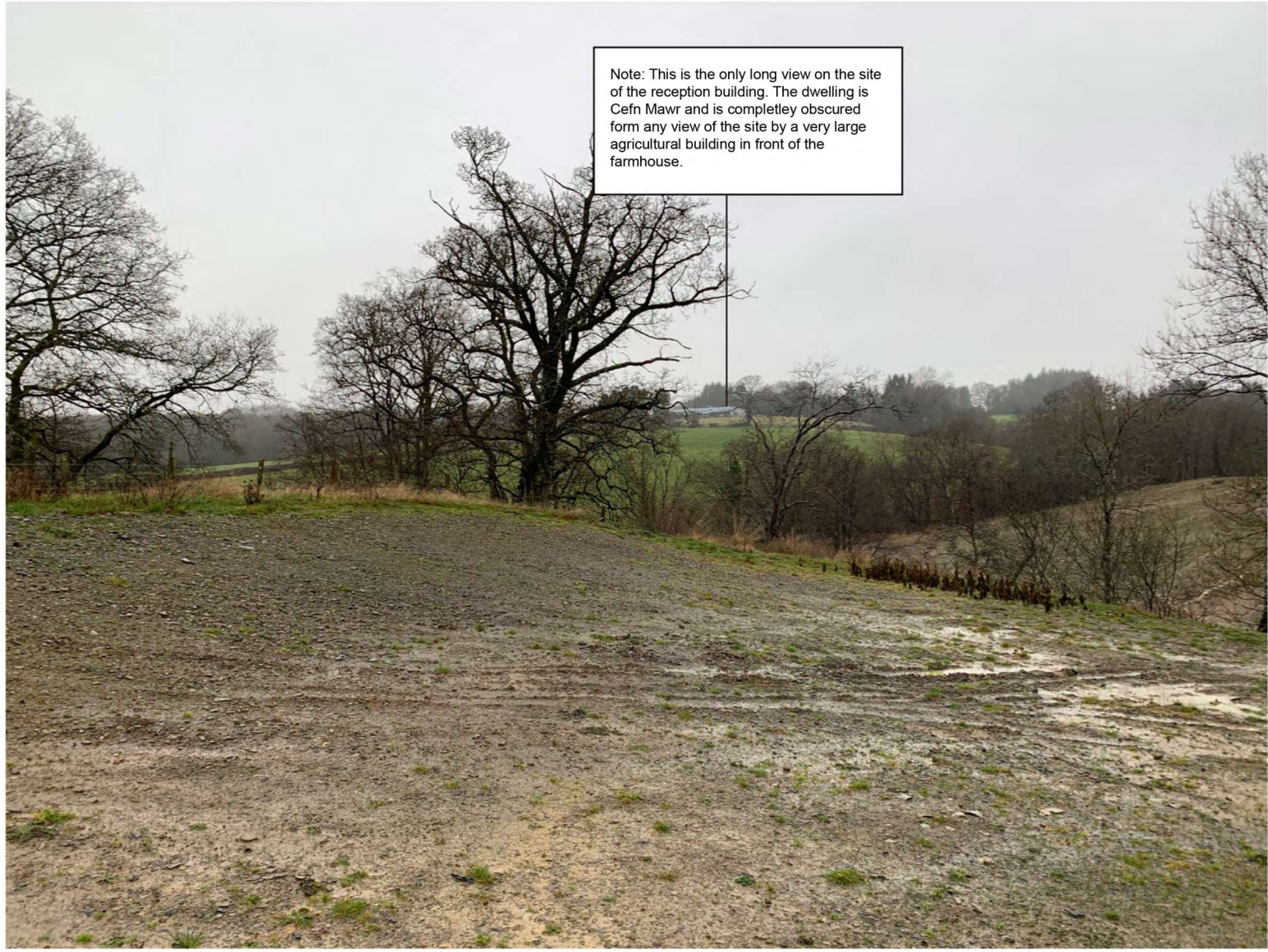


This drawing is COPYRIGHT. It must not be reproduced or disclosed to third parties without our prior permission. Do not scale from this drawing, or, interrogate and use electronic information.

Any discrepancies should be reported immediately.

Any surveyed information incorporated within this drawing cannot be guaranteed as accurate unless confirmed by a fixed dimension. All dimensions are in millimetres unless noted otherwise.

Note: This is the only long view on the site of the reception building. The dwelling is Cefn Mawr and is completely obscured from any view of the site by a very large agricultural building in front of the farmhouse.



Head Office
 29 Broad Street
 Newtown
 Powys
 SY16 2BQ
 t - 01686 610311
 w - www.hughesarchitects.co.uk

Project Scramble Track, Experience Centre Building, Holiday Lodges and Associated Infrastructure			
Drawing Status Stage 3a: Planning		Drawing Title View From Proposed Site Of Reception Building	
Scale NTS	Date 16.12.19	Drawing No T046.3a.3.011	Rev A
Drawn by Ffe	Checked DH		

Rev A - Title change 27.10.21 - GSP