



NOTES
This drawing is to be read in conjunction with the general arrangement elevations, window details and window and external door schedules.

WINDOW NOTES
All windows are to be UPVC windows fitted with double glazed sealed units all to achieve a maximum u-value of 1.6 W/m²K.

BUILDING REGULATIONS PART-Q
All ground floor and other easily accessible windows should be secure windows in accordance with the below paragraphs:

Windows should be made to a design that has been shown by test to meet the security requirements of British Standards publication PAS 24:2012. Windows satisfying other standards that provide similar or better performance are also acceptable. These standards include:
- STS 204 Issue 3 2012
- LPS 1170 Issue 7 2010 security rating 1
- LPS 2081 Issue 1 2015 security rating A
Frames should be mechanically fixed to the structure of the building in accordance with the manufacturers installation instructions.

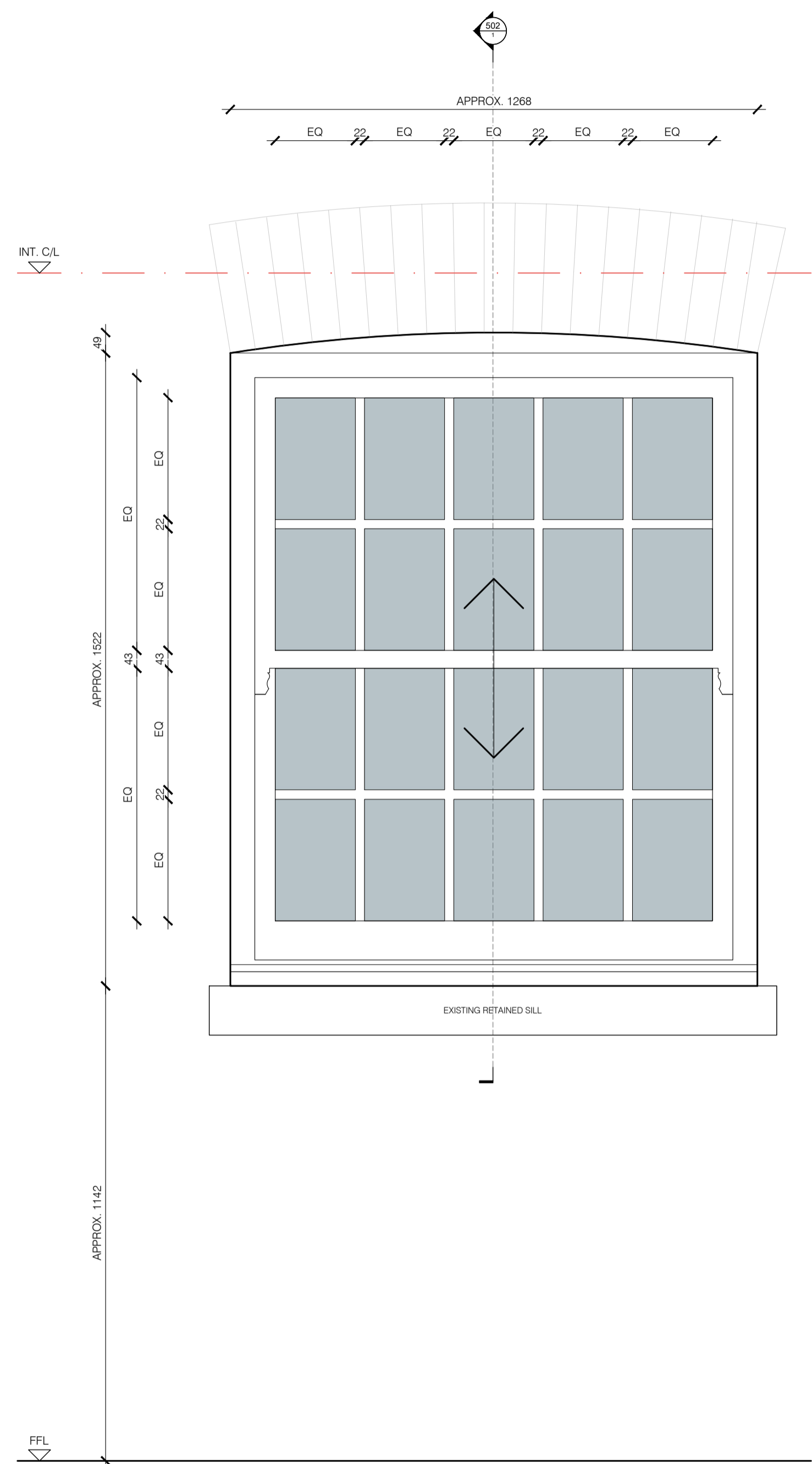
TOLERANCES
Dimensions stated are to structural openings and the manufacturer should make their own reductions for fitting tolerances subject to their own installation details.

FIRE STOPPING
Cavities to all openings are to be sealed using a proprietary cavity closer achieving 30 minutes insulation and 30 minutes integrity when tested utilising the principles of BS 476-22: 1987.

WEATHERTIGHT SEALS
Windows are to be sealed around external perimeter to floor brickwork in accordance with window manufacturers recommendations. Where positioned within rainscreen or standing seam zinc cladding windows are to be sealed back to frame sheathing board using an EPDM seal to the perimeter behind the cladding.

SAFETY GLAZING
Glazing in critical locations as defined by Approved Document Part K 5.1.

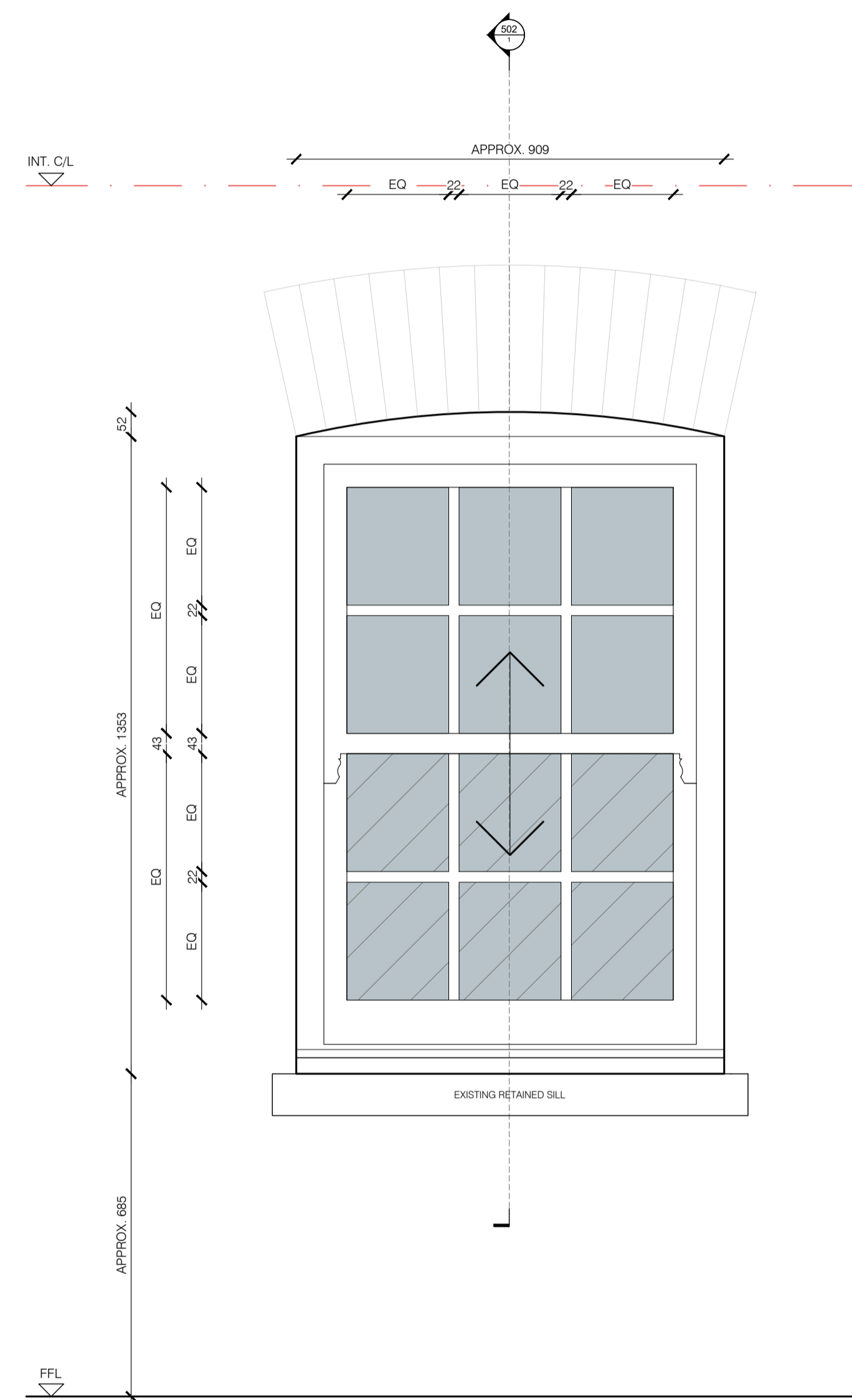
GLAZING NOTES:
A. Clear glazing to manufacturers specification
B. Safety glass to critical locations*
C. Obscure glazing: Level 4 obscurity float glass.
*All glazing to external doors is to be laminated to BS EN 356:2000 class P1A.



WINDOW TYPE 1
REPLACEMENT TIMBER SASH WINDOW
First floor windows W.1-01 & W.1-02

Window: Timber sliding sprung sash window, MUMFORD & WOOD, CONSERVATION RANGE or equivalent.
Glazing: Clear double glazed
Finish: White
Isomorphism: Generally to manufacturers design. PAS 24 certified locking if achievable.
Operation: Sliding sash

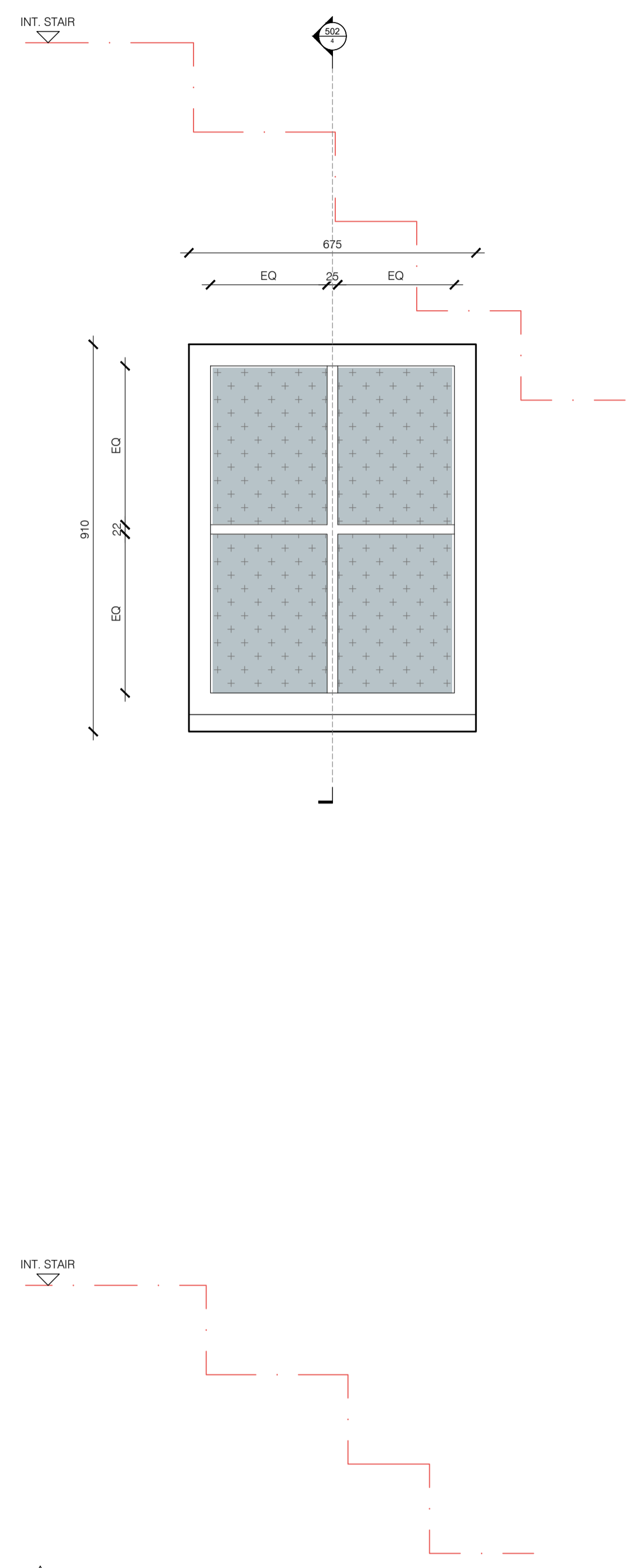
Other Requirements:
Replacement to suit existing window, manufacturer to advise frame & operation to suit. All dims to be site-measured prior to manufacture
Sash horns & glazing bars to match existing.
Matching miff section to arched head over.
Cill frame to sit over retained existing projecting stone cill.



WINDOW TYPE 2
REPLACEMENT TIMBER SASH WINDOW
Second floor windows W.2-01, W.2-02 & W.2-03

Window: Timber sliding sprung sash window, MUMFORD & WOOD, CONSERVATION RANGE or equivalent.
Glazing: Clear double glazed
Finish: White
Isomorphism: Generally to manufacturers design.
Operation: Sliding sash

Other Requirements:
As Window Type 1 except
Laminated glazing required to lower sash.



WINDOW TYPE 3
NEW TIMBER FIXED CASEMENT WINDOW
Ground floor window W.G-01

Window: Timber fixed casement window, MUMFORD & WOOD, CONSERVATION RANGE or equivalent.
Glazing: Obscure double glazed, 30mins fire rated
Finish: White
Isomorphism: Generally to manufacturers design.
Operation: None

Other Requirements:
New opening to be in line with window above, at level to suit stair behind (refer to demolition plans).
New projecting stone cill to match existing window openings to rear.
30 mins fire rated.

PT	21.07.2022	PRELIMINARY ISSUE	MP
REV	DATE	AMENDMENT	DRAWN

RESIDENTIAL RENOVATION
22 EATON MEWS SOUTH
LONDON, SW1W 9HP
BELGRAVIA

WINDOW ELEVATIONS
SHEET 1

CLIENT:	PRIVATE CLIENT
DRAWN:	PROJECT NO:
MP	21-547
CHECKED:	SCALE:
	1:10 @ A1

401