



NOTES
This drawing is to be read in conjunction with the general arrangement elevations, window details and window and external door schedules.

WINDOW NOTES
All windows are to be UPVC windows fitted with double glazed sealed units all to achieve a maximum u-value of 1.6 W/m²K.

BUILDING REGULATIONS PART-Q

All ground floor and other easily accessible windows should be secure windows in accordance with the below paragraphs:

- Windows should be made to a design that has been shown by test to meet the security requirements of British Standards publication PAS 24:2012. Windows satisfying other standards that provide similar or better performance are also acceptable. These standards include:
 - STS 204 Issue 3 2012
 - LPS 1176 Issue 7 2015 security rating 1
 - LPS 2081 Issue 1 2015 security rating A
- Frames should be mechanically fixed to the structure of the building in accordance with the manufacturers installation instructions.

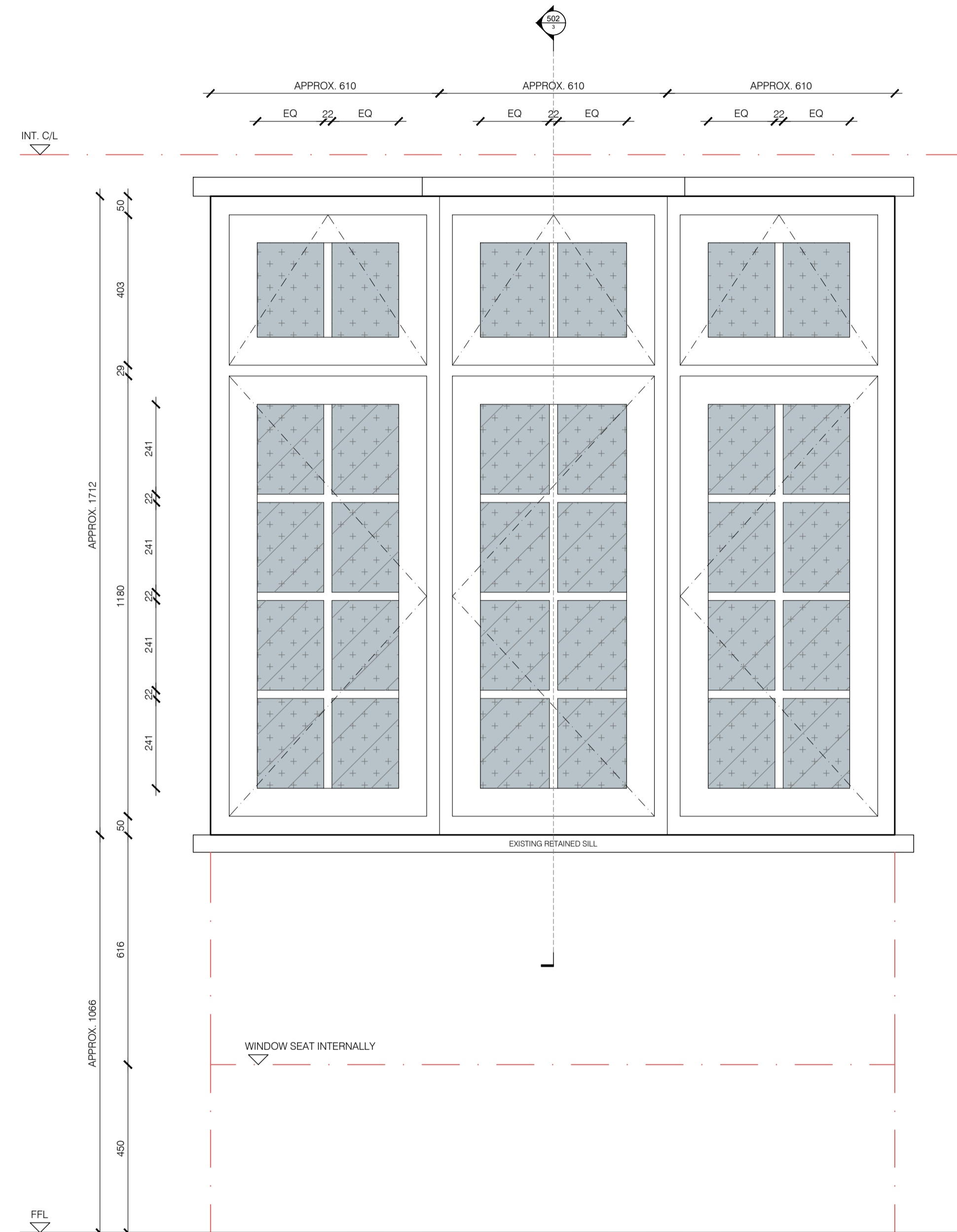
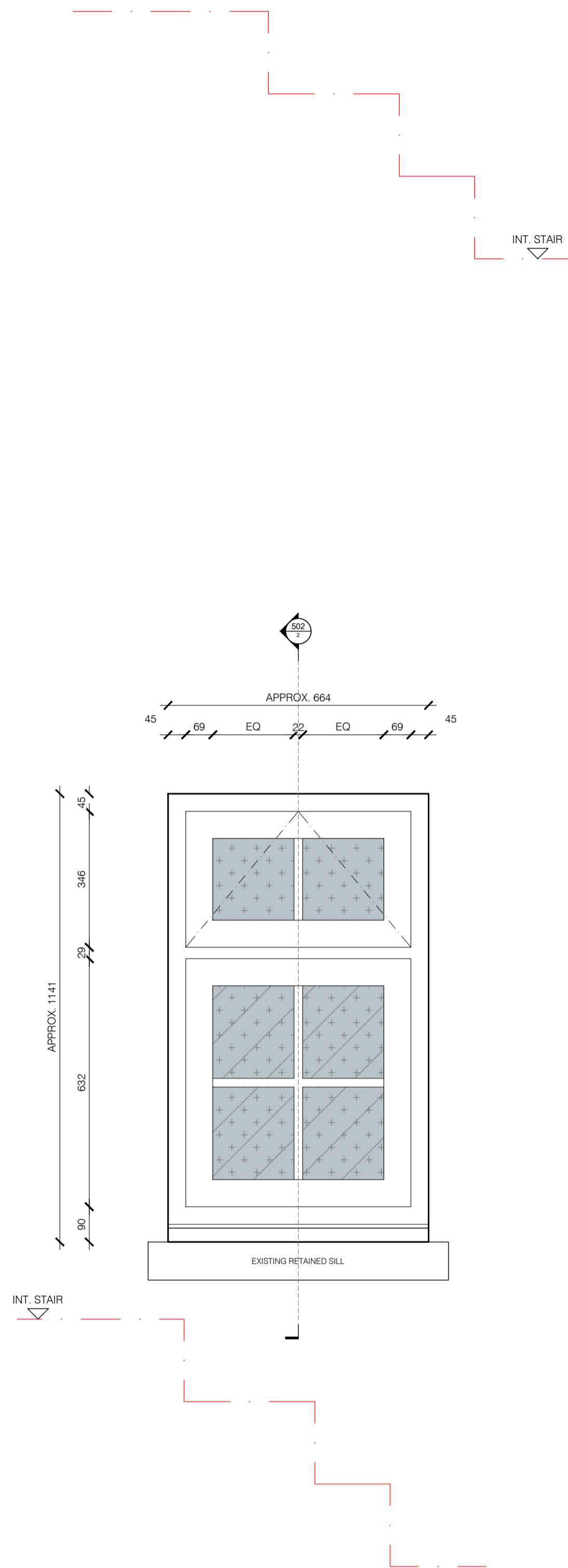
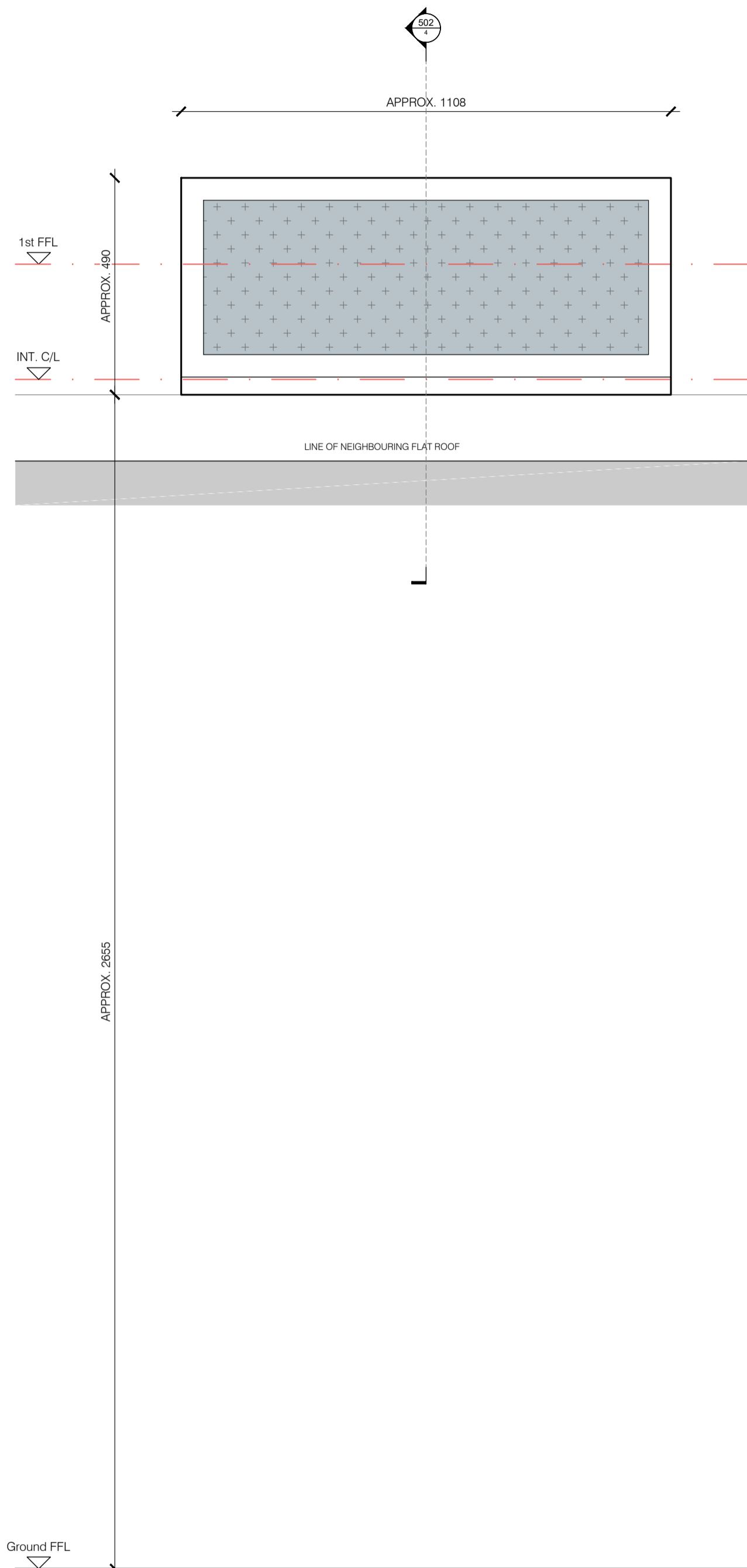
TOLERANCES
Dimensions stated are to structural openings and the manufacturer should make their own reductions for fitting tolerances subject to their own installation details.

FIRE STOPPING
Cavities to all openings are to be sealed using a proprietary cavity closer achieving 30 minutes insulation and 30 minutes integrity when tested utilising the principles of BS 476-22: 1987.

WEATHERTIGHT SEALS
Windows are to be sealed around external perimeter to floor brickwork in accordance with window manufacturers recommendations. Where positioned within recesses or existing sash zinc cladding windows are to be sealed back to frame sheathing board using an EPDM seal to the perimeter behind the cladding.

SAFETY GLAZING
Glazing in critical locations as defined by Approved Document Part K 5.1.

- GLAZING NOTES:**
- A. Clear glazing to manufacturers specification
 - B. Safety glass to critical locations*
 - C. Obscure glazing; Level 4 obscure float glass.
- *All glazing to external doors is to be laminated to BS EN 356:2000 class P1A.



WINDOW TYPE 4
REPLACEMENT TIMBER FIXED CASEMENT WINDOW
Ground floor window W-G-02

Window: Timber fixed casement window, MUMFORD & WOOD, CONSERVATION RANGE or equivalent.
Glazing: Obscure double glazed
Finish: White
Ironmongery: Generally to manufacturers design.
Operation: None

Other Requirements:
Set within first floor zone & lights ground floor space via light well; refer to detail sections.
Set directly over neighbouring flat roof waterproof upstand. Size & method of installation to be agreed on site prior to manufacture.

WINDOW TYPE 5
REPLACEMENT TIMBER CASEMENT WINDOW
First floor window W-1-03

Window: Timber casement window, MUMFORD & WOOD, CONSERVATION RANGE or equivalent.
Glazing: Obscure double glazed
Finish: White
Ironmongery: Generally to manufacturers design.
Operation: Top hung operation to top sash; fixed dummy sash below.

Other Requirements:
Replacement to suit existing window; manufacturer to advise frame & operation to suit.
All dims to be site-measured prior to manufacture
Glazing bars to match existing
Cill frame to sit over retained existing projecting stone cill.
Laminated glazing to lower sash.

WINDOW TYPE 6
REPLACEMENT TIMBER SASH BAY WINDOW
First floor window W-1-04

Window: Timber casement windows with bay posts, MUMFORD & WOOD, CONSERVATION RANGE or equivalent.
Glazing: Obscure double glazed
Finish: White
Ironmongery: Generally to manufacturers design; PAS-24 certified locking if achievable.
Operation: Sash hung with top hung top lights.

Other Requirements:
Replacement to suit existing window; manufacturer to advise frame & operation to suit. All dims to be site-measured prior to manufacture
Glazing bars to match existing
Cill frame to sit over retained existing projecting stone cill.
Existing projecting canopy at head to be replaced like for like in timber with lead dressing over; refer to details.
100mm max. restrictor on sash opening lights.
Laminated glazing to sash opening lights where <800mm above window seat.

PI	21.07.2022	PRELIMINARY ISSUE	MP
REV.	DATE	AMENDMENT	DRAWN

RESIDENTIAL RENOVATION
22 EATON MEWS SOUTH
LONDON, SW1W 9HP
BELGRAVIA

DRAWING TITLE:
WINDOW ELEVATIONS
SHEET 2

CLIENT:
PRIVATE CLIENT

DRAWN:	PROJECT NO:	DRAWING NO.
MP.	21-547	
CHECKED:	SCALE:	
	1:10 @ A1	

402

DATE: JANUARY 2022 REVISION: P1