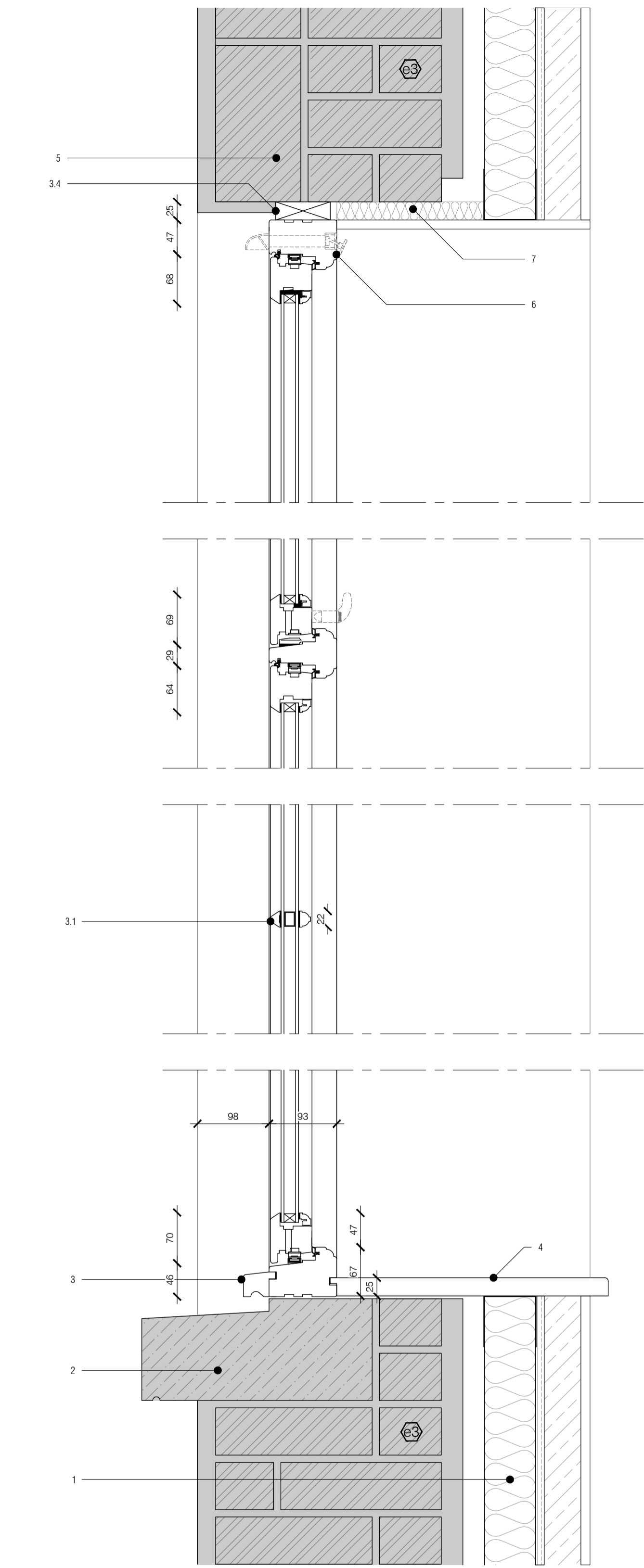


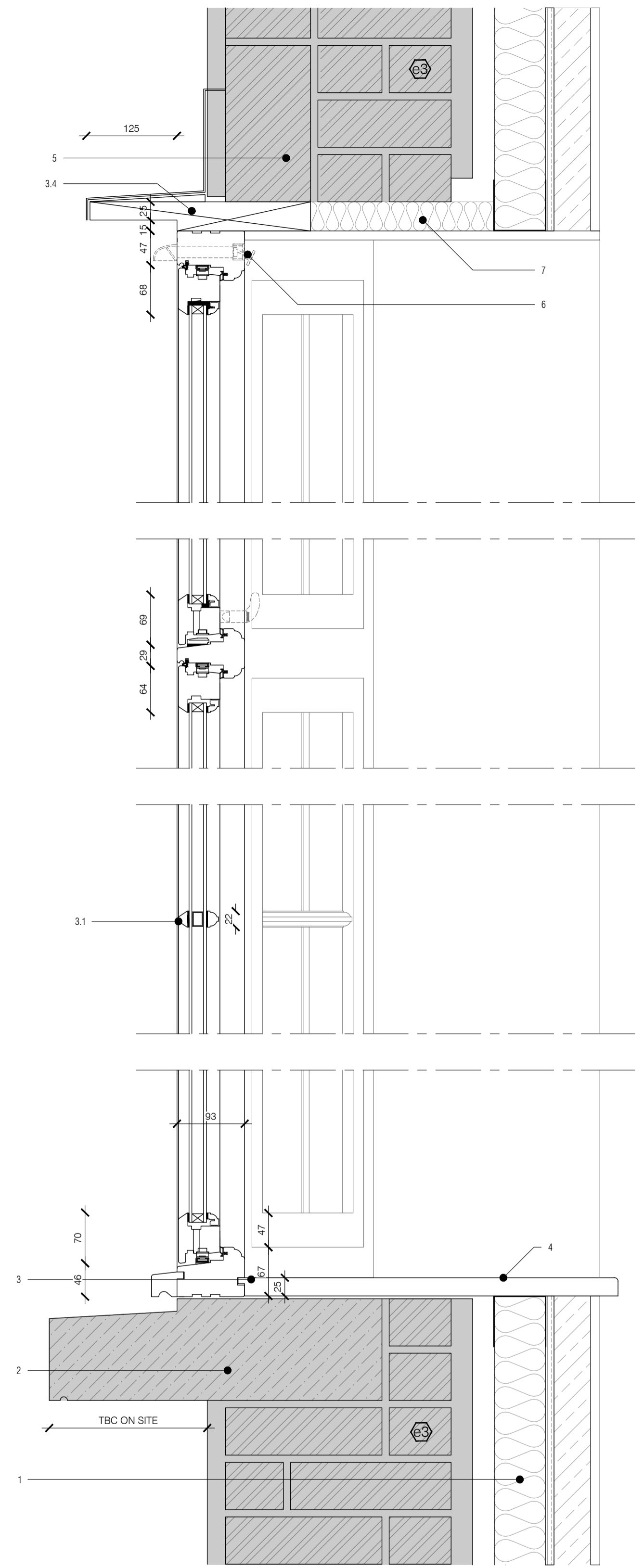
DETAIL No  
502.1  
△

- SECTION DETAIL**  
 [TYPICAL SASH WINDOW: TYPES 1, 2, 7, 8 & 9]  
 1:5 @ A1
1. Wall Type [e4]; refer to detail 501 / 1.
  2. Existing sill retained & refurbished or replaced like-for-like.
  3. Timber casement window; MUMFORD & WOOD; CONSERVATION RANGE or equivalent.
  - 3.1. Double glazed units with glazing bars & sash horns as indicated on drawings 401-403.
  - 3.2. Ironmongery to manufacturer's standard specification; typically including hook catch, sash lift & security lock (to 1st floor windows).
  - 3.3. Finish to match existing externally, internally to interior designer's specification.
  - 3.4. Matching curved infill section over window where within arched opening.
  - 3.5. Standard 35mm sill extender.
  4. 25mm painted softwood sill with pencil round top edge.
  5. Existing arched brick lintel to some openings.
  6. Trickle vents to provide min. 2500sqmm per window to suit MEV ventilation strategy; refer to M&E details.
  7. Mineral wool insulation to be installed to head to prevent cold bridge.



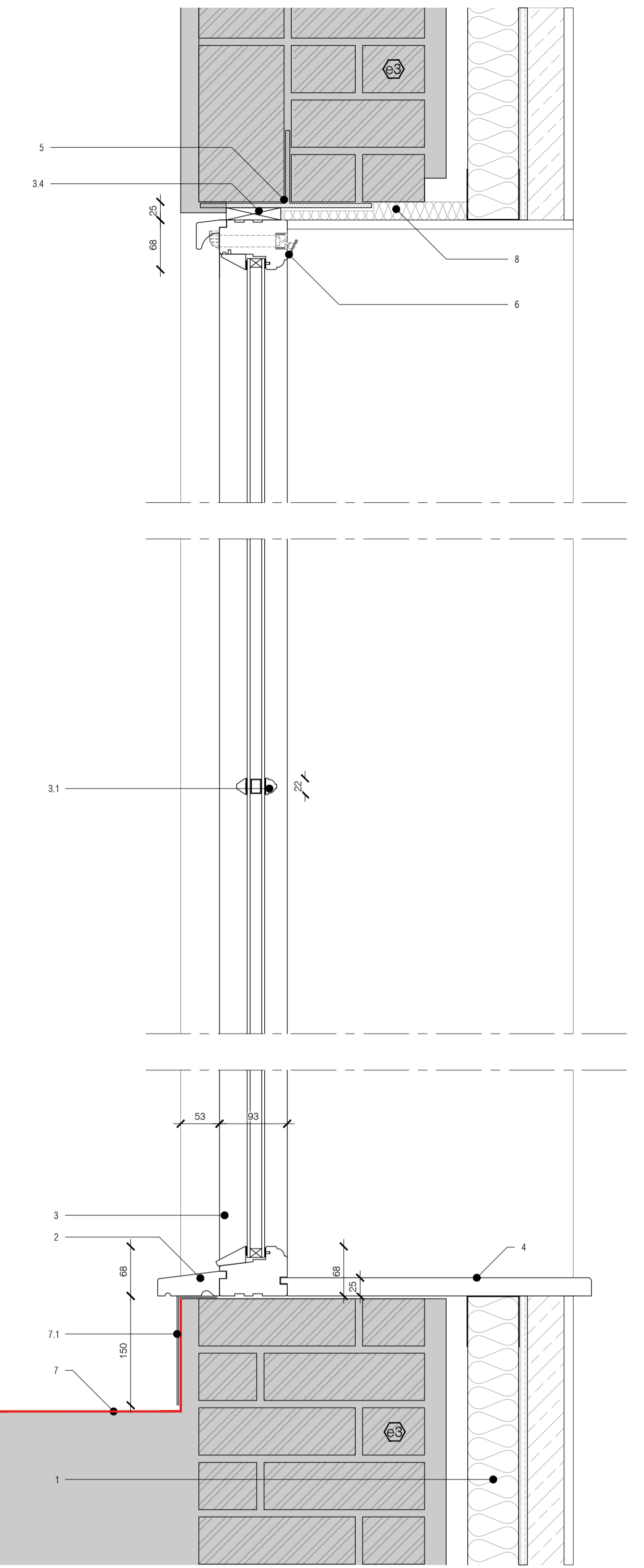
DETAIL No  
502.2  
△

- SECTION DETAIL**  
 [CASEMENT WINDOW: TYPE 5]  
 1:5 @ A1
1. Wall Type [e4]; refer to detail 501 / 1.
  2. Existing sill retained & refurbished or replaced like-for-like.
  3. Timber casement window; MUMFORD & WOOD; CONSERVATION RANGE or equivalent. Opening patterns as per window elevation drawings 401-403.
  - 3.1. Double glazed units with glazing bars as indicated on drawings 401-403.
  - 3.2. Ironmongery to manufacturer's standard specification; typically with bulb end casement handle in finish to client's preference.
  - 3.3. Finish to match existing externally, internally to interior designer's specification.
  - 3.4. Timber infill packing as required to suit render finish externally on rear facade.
  - 3.5. Standard 35mm sill extender.
  4. 25mm painted softwood sill with pencil round top edge.
  5. Existing lintel retained.
  6. Trickle vents to provide min. 2500sqmm per window to suit MEV ventilation strategy; refer to M&E details.
  7. Mineral wool insulation to be installed to head to prevent cold bridge.



DETAIL No  
502.3  
△

- SECTION DETAIL**  
 [CASEMENT BAY WINDOW: TYPE 6]  
 1:5 @ A1
1. Wall Type [e4]; refer to detail 501 / 1.
  2. Existing projecting curved sill retained & refurbished or replaced like-for-like.
  3. Timber casement window; MUMFORD & WOOD; CONSERVATION RANGE or equivalent. Opening patterns as per window elevation drawings 401-403.
  - 3.1. Double glazed units with glazing bars as indicated on drawings 401-403.
  - 3.2. Ironmongery to manufacturer's standard specification; typically with bulb end casement handle in finish to client's preference.
  - 3.3. Finish to match existing externally, internally to interior designer's specification.
  - 3.4. Timber curved head piece to match window with code 3 lead flashing over at 1:60 falls. Chase into rendered wall over as existing.
  - 3.5. Standard 35mm sill extender.
  4. 25mm painted softwood sill with pencil round top edge.
  5. Existing lintel retained.
  6. Trickle vents to provide min. 2500sqmm per window to suit MEV ventilation strategy; refer to M&E details.
  7. Mineral wool insulation to be installed to head to prevent cold bridge.



DETAIL No  
502.3  
△

- SECTION DETAIL**  
 [FIXED CASEMENT WINDOW: TYPES 3 & 4]  
 1:5 @ A1
1. Wall Type [e4]; refer to detail 501 / 1.
  2. New 65mm timber sill extender as part of window.
  3. Timber casement window; MUMFORD & WOOD; CONSERVATION RANGE or equivalent. Direct glazed into frame.
  - 3.1. Double glazed units with glazing bars as indicated on drawings 401-403 (type 3 only).
  - 3.2. Finish to match existing externally, internally to interior designer's specification.
  - 3.3. Timber infill packing as required to suit render finish externally on rear facade.
  4. 25mm painted softwood sill with pencil round top edge.
  5. Existing lintel retained.
  6. Trickle vents to provide min. 2500sqmm per window to suit MEV ventilation strategy; refer to M&E details.
  7. Neighbouring flat roof finish.
  - 7.1. New code 3 lead flashing over existing roof waterproofing.
  8. Mineral wool insulation to be installed to head to prevent cold bridge.

PT	21.07.2022	PRELIMINARY ISSUE	MP
REV	DATE	AMENDMENT	DRAWN
PROJECT			
<b>RESIDENTIAL RENOVATION</b>			
22 EATON MEWS SOUTH LONDON, SW1W 9HP BELGRAVIA			
DRAWING TITLE			
<b>CONSTRUCTION DETAILS TYPICAL WINDOW SECTIONS</b>			
CLIENT			
PRIVATE CLIENT			
DRAWN	PROJECT NO	DRAWING NO	
MP	21.547	<b>502</b>	
CHECKED	SCALE	REVISION	
	1:5 @ A1		
DATE	JANUARY 2022		P1
<b>FRONT.</b>			
1171 HIGH STREET, RAYLEIGH, ESSEX, S86 7DA. TEL: +44 (0)1702 931 453   EMAIL: HELLO@FRONT-ARCHITECTURE.CO.UK			