



NOTES
This drawing is to be read in conjunction with the general arrangement elevations, window details and window and external door schedules.

WINDOW NOTES
All windows are to be UPVC windows fitted with double glazed sealed units all to achieve a maximum u-value of 1.6 W/m²K.

BUILDING REGULATIONS PART-Q
All ground floor and other easily accessible windows should be secure windows in accordance with the below paragraphs:

Windows should be made to a design that has been shown by test to meet the security requirements of British Standards publication PAS 24:2012. Windows satisfying other standards that provide similar or better performance are also acceptable. These standards include:
- STS 204 Issue 3:2012
- LPS 1175 Issue 7:2015 security rating 1
- LPS 2081 Issue 1:2015 security rating A
Frames should be mechanically fixed to the structure of the building in accordance with the manufacturers installation instructions.

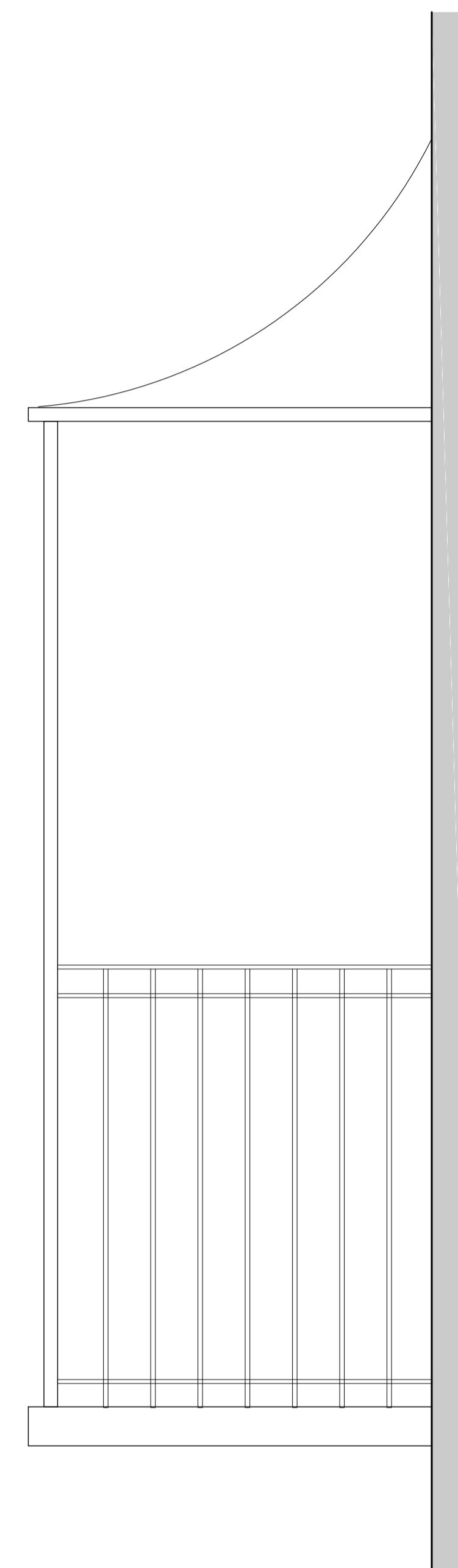
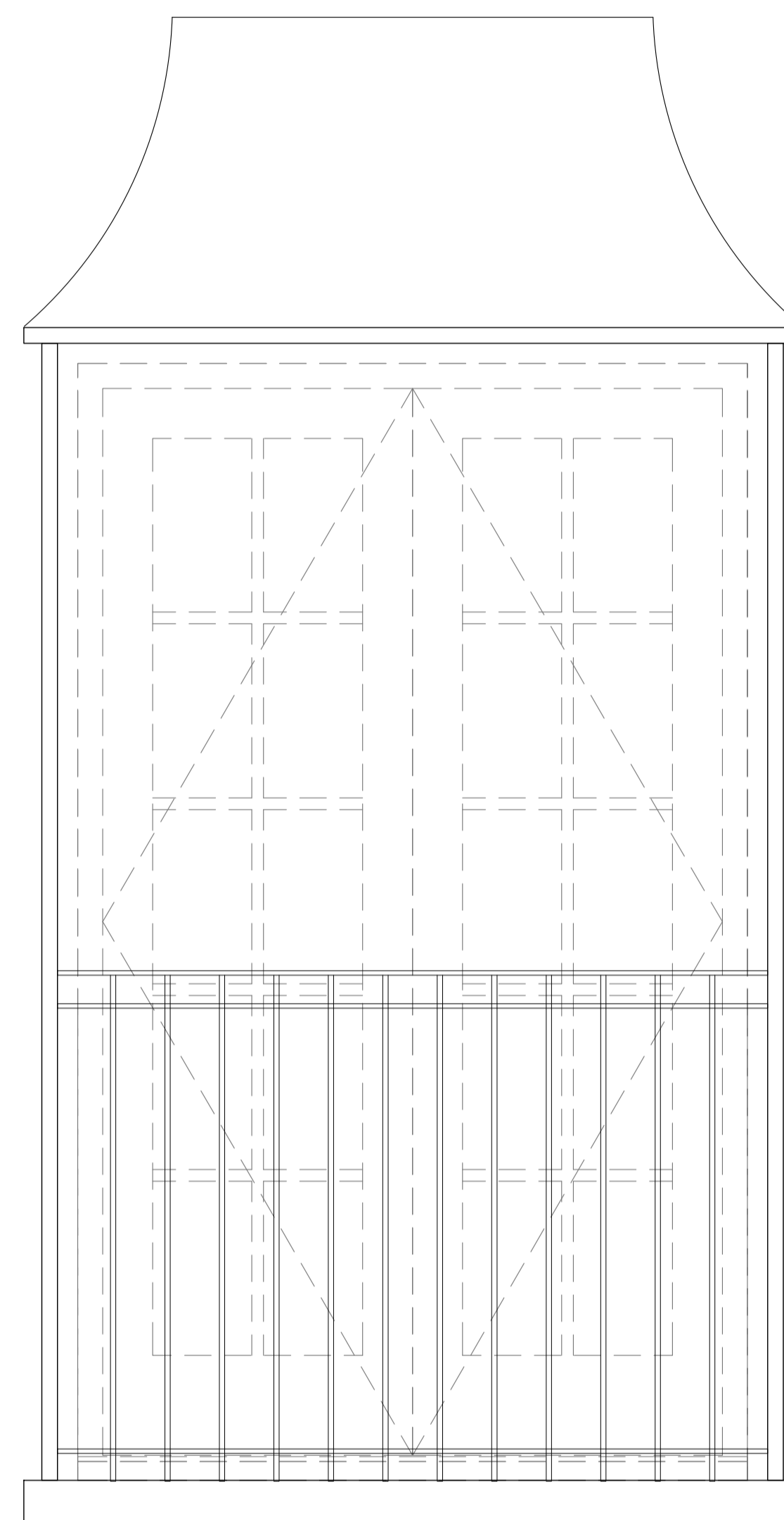
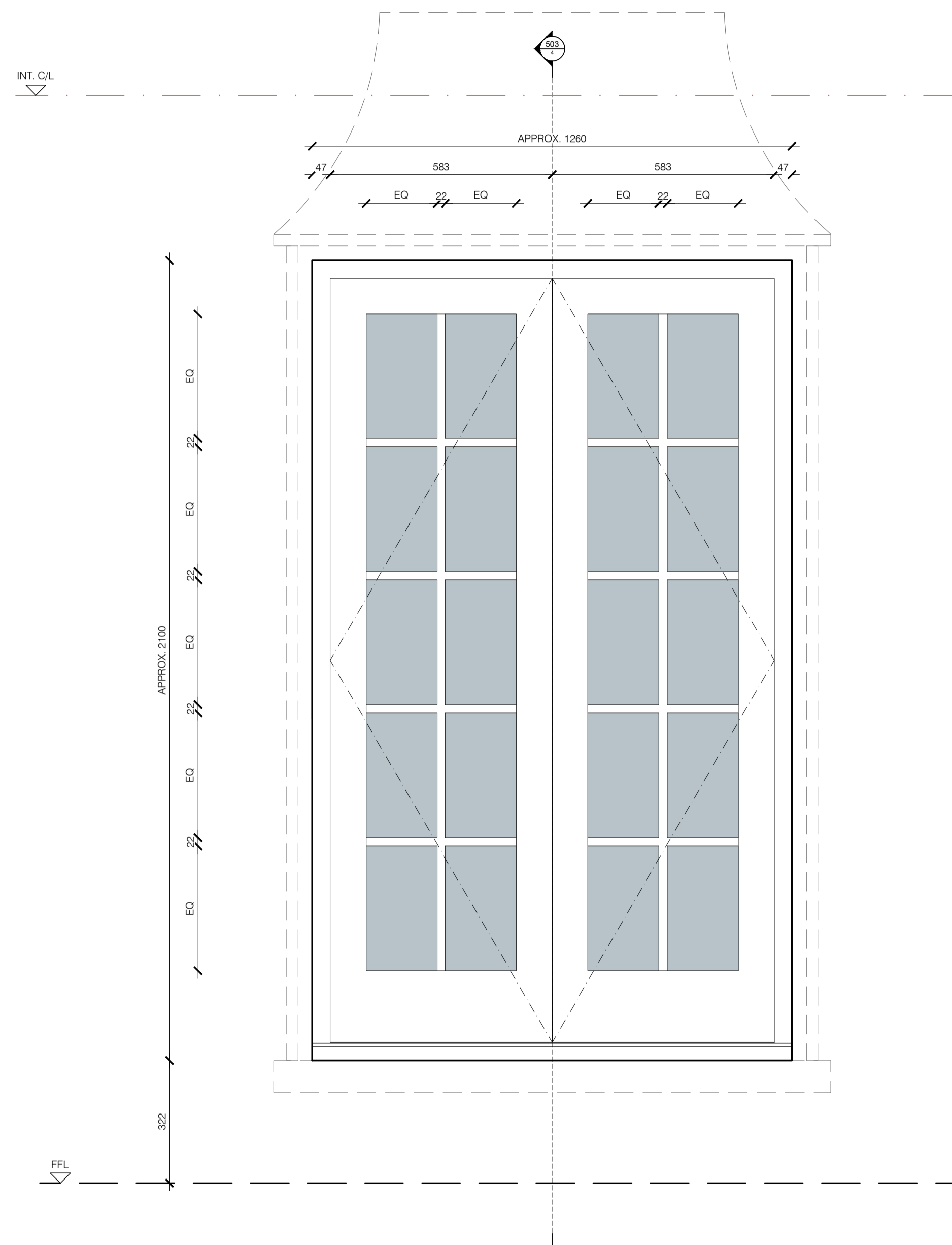
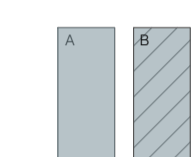
TOLERANCES
Dimensions stated are to structural openings and the manufacturer should make their own reductions for fitting tolerances subject to their own installation details.

FIRE STOPPING
Cavities to all openings are to be sealed using a proprietary cavity closer achieving 30 minutes insulation and 30 minutes integrity) when tested utilising the principles of BS 476-22: 1987.

WEATHERTIGHT SEALS
Windows are to be sealed around external perimeter to face brickwork in accordance with window manufacturers recommendations. Where positioned within recesses or spanning sash zinc cladding windows are to be sealed back to frame sheathing board using an EPDM seal to the perimeter behind the cladding.

SAFETY GLAZING
Glazing in critical locations as defined by Approved Document Part K 5.1.

GLAZING NOTES:
A. Clear glazing to manufacturers specification
B. Safety glass to critical locations*
C. Obscure glazing; Level 4 obscurity float glass.
*All glazing to external doors is to be laminated to BS EN 356:2000 class P1A.



EXTERNAL DOOR TYPE 3
REPLACEMENT BALCONY DOORS
First Floor

Door: Solid hardwood balcony double doors; MUMFORD & WOOD; CONSERVATION RANGE or equivalent.
Operation: Sliding outward opening.
Frame: Hardwood framed.
Glazing: Clear double glazed.
Finish: To clients preference.
Ironmongery: To manufacturer's specification generally with client input; PAS 24 compliant if achievable.
Other Requirements:
When projecting balcony structure (shown dashed)

EXTERNAL DOOR TYPE 3
BALCONY ELEVATIONS
First Floor

Framing: Painted mild steel sections to achieve minimal & elegant appearance Refer to SE details for outline requirements & fixing.
Balustrading: 10mm square profile verticals at 100mm centres with matching horizontal rails as shown.
Handrail: 60x10mm painted mild steel flat.
Floor Deck: Proprietary grating by ELEFANT or similar to top & bottom of floor channel; black finish.
Roof: Curved metal lid by specialist manufacturer with lead flashing over. Existing canopy to be retained for potential re-use over new structure.
Other Requirements:
Polished welds throughout.

PS	28.01.2022	NOTE RETAINED CANOPY	MP
PT	21.07.2022	PRELIMINARY ISSUE	MP
REV.	DATE	AMENDMENT	DRAWN

RESIDENTIAL RENOVATION
22 EATON MEWS SOUTH
LONDON, SW1W 9HP
BELGRAVIA

EXTERNAL DOOR ELEVATIONS
SHEET 2

CLIENT:
PRIVATE CLIENT

DRAWN:	PROJECT NO:	DRAWING NO:
MP	21.547	
CHECKED:	SCALE:	405
	1:10 @ A1	

DATE: JANUARY 2022 REVISION: P2