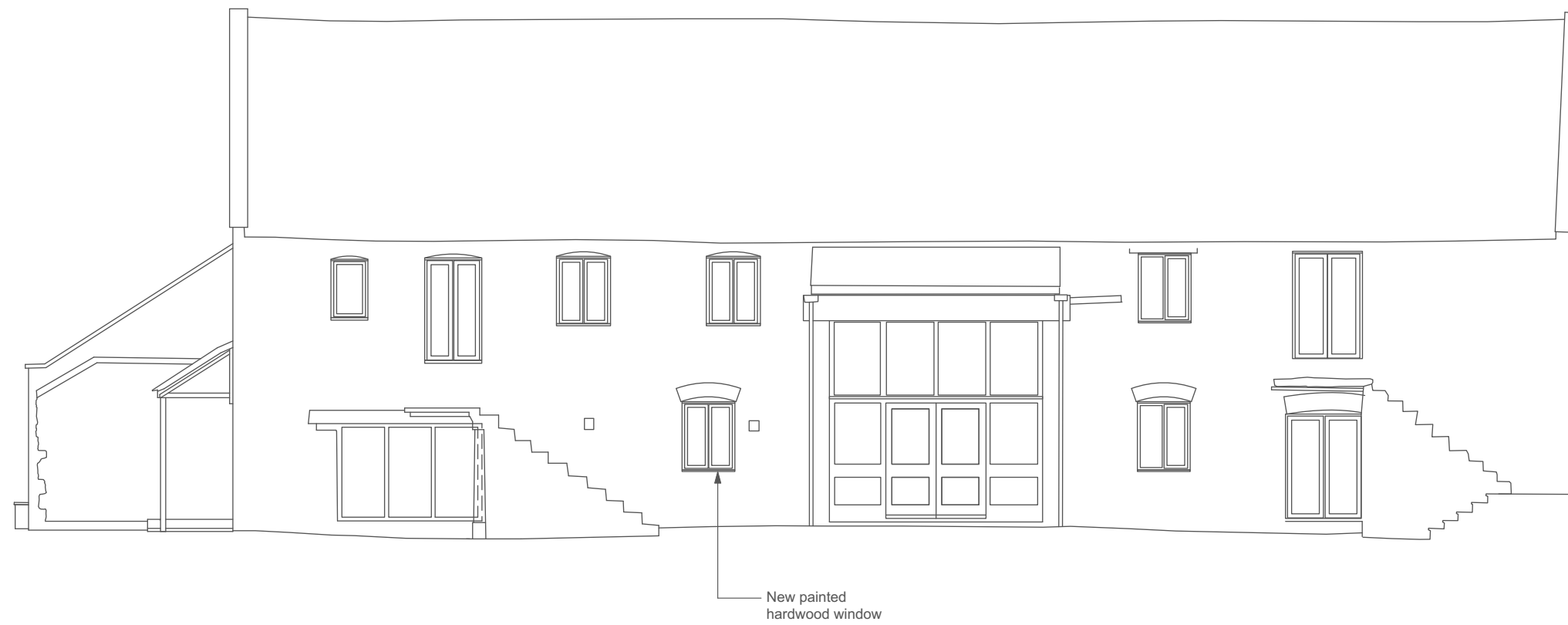
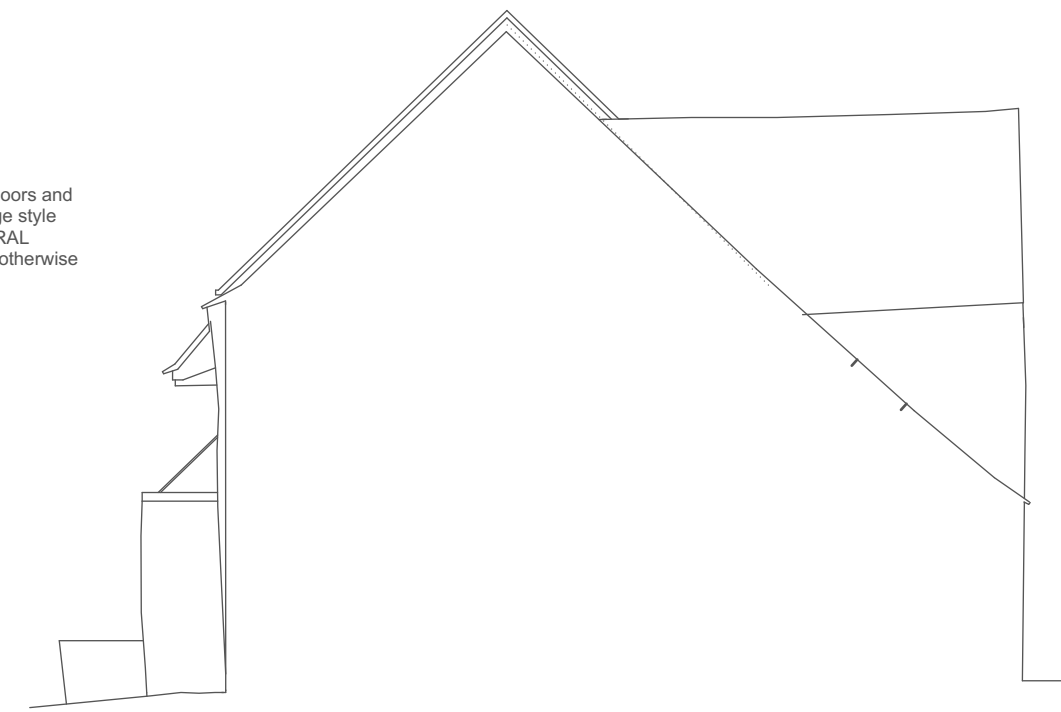


NOTES:
 1. This drawing and its design is the copyright of Cotswold Architects Ltd. and may not be reproduced in any form without their prior consent.
 2. Do not scale off this drawing.
 3. Dimensions to be checked on site.



SOUTH EAST ELEVATION

NOTE: Replace all doors and windows with heritage style painted aluminium (RAL 7032) unless stated otherwise



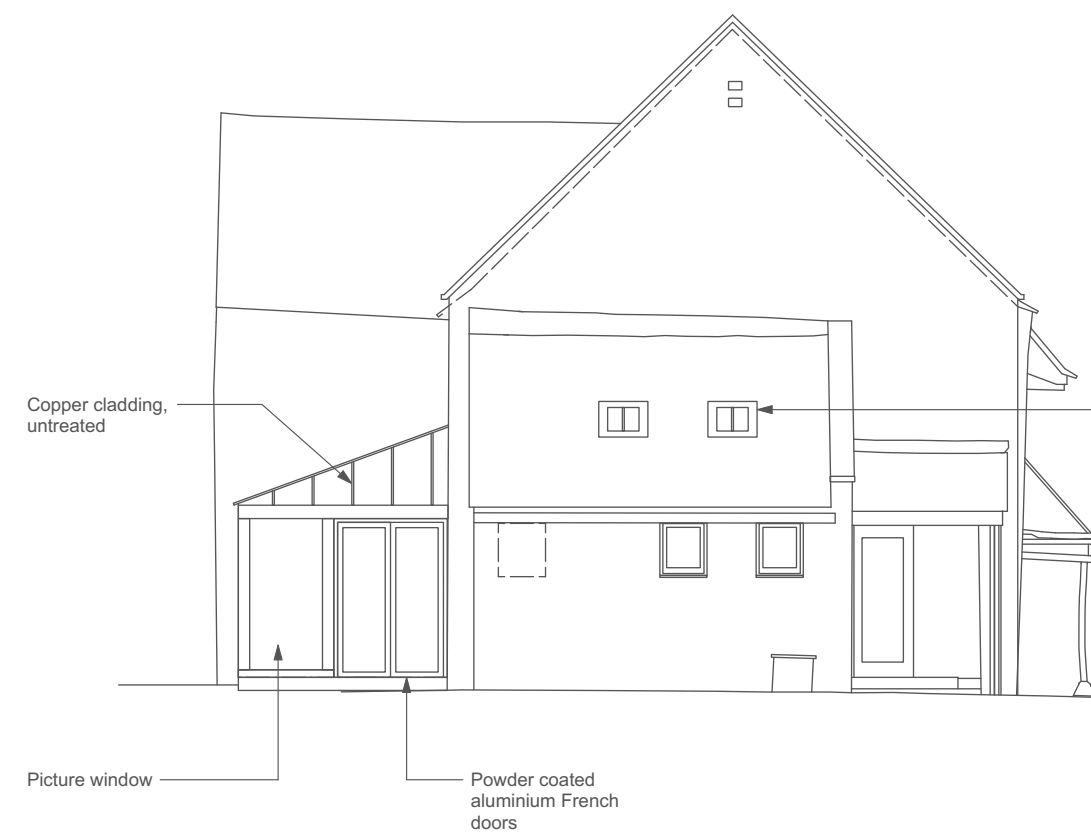
NORTH EAST ELEVATION

NOTE: Replace all doors and windows with heritage style painted aluminium (RAL 7032) unless stated otherwise



NORTH WEST ELEVATION

NOTE: Replace all doors and windows with heritage style painted aluminium (RAL 7032) unless stated otherwise



SOUTH WEST ELEVATION

NOTE: Replace all doors and windows with heritage style painted aluminium (RAL 7032) unless stated otherwise

CLIENT:
Kamara Sports Ltd
cotswold architects.
 RIBA CHARTERED ARCHITECTS
www.cotswoldarchitects.com
info@cotswoldarchitects.com

tel. 01285 238528

PROJECT:
 Change of use to apartments:
 Fraser House
 Wadham Close
 Southrop
 GL7 3NR

TITLE:
Proposed Elevations

DRAWING NO.	REV.
21-028-P-E01	.

SCALE: 1:100@A2 DATE: Jan 2022

