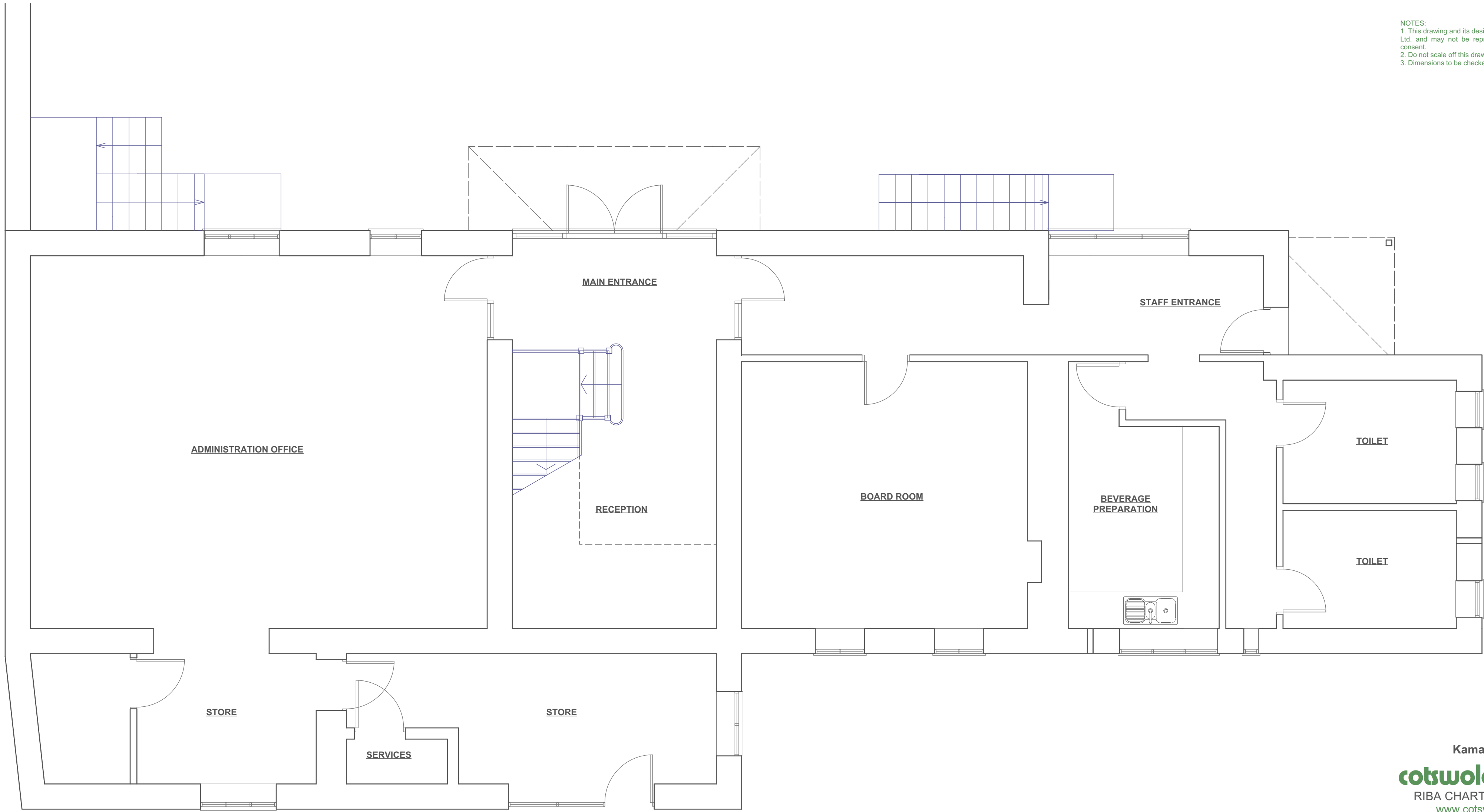


NOTES:  
 1. This drawing and its design is the copyright of Cotswold Architects Ltd. and may not be reproduced in any form without their prior consent.  
 2. Do not scale off this drawing.  
 3. Dimensions to be checked on site.



CLIENT:  
**Kamara Sports Ltd**  
**cotswold architects.**  
 RIBA CHARTERED ARCHITECTS  
[www.cotswoldarchitects.com](http://www.cotswoldarchitects.com)  
[info@cotswoldarchitects.com](mailto:info@cotswoldarchitects.com)

tel. 01285 238528

PROJECT:  
 Change of use to apartments:  
 Fraser House  
 Wadham Close  
 Southrop  
 GL7 3NR

TITLE:  
**Existing Ground Floor Plan**

DRAWING NO.	REV.
<b>21-028-E-GF01</b>	.

SCALE:  
 1:50@A2

DATE:  
 Jan 2022

