

## Product Datasheet

# Aluminium Downpipe Systems

Ref: PD002RW

### Heritage Aluminium Downpipes

A range of traditionally designed, socketed aluminium downpipes. Connections between pipes and fittings are made with loose cast sockets, available with ears for fixing back to the wall. Pipes can also be fixed with a choice of base clips to give alternative projections.



**Circular**  
63, 76, 102, 150mm dia



**Square**  
75x75, 100x100mm



**Rectangular**  
100x75mm

### Flushjoint Aluminium Downpipes

A contemporary range of extruded aluminium downpipes. The Flushjoint system is based on concealed spigots which give a smooth, clean appearance that complements modern building design. The pipes are mounted on brackets to stand clear of the structure.



**Circular**  
63, 76, 102, 152 mm dia



**Square**  
75x75, 100x100mm



**Rectangular**  
100x75mm

## Product Datasheet

# Aluminium Downpipe Systems

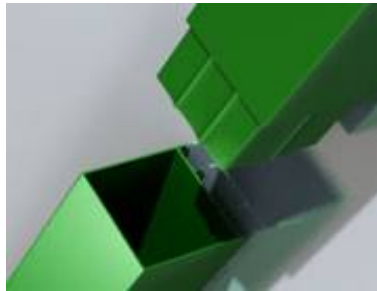
Ref: PD002RW

## Guardian Aluminium Downpipes

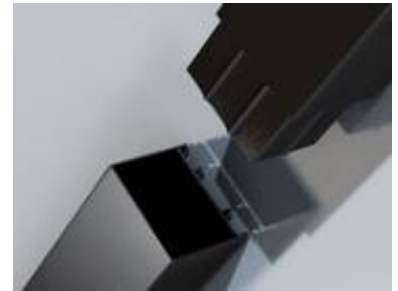
A contemporary range of extruded aluminium downpipes designed for mounting flush with the building fabric. Guardian pipework has concealed brackets and concealed jointing which provides a high level of security.



**Circular**  
86x106, 111x138mm



**Square**  
80x72, 109x102mm



**Rectangular**  
84x102mm

## General

### Colour Options

Alumasc aluminium rainwater products are supplied in plain (mill) finish or in a range of factory applied polyester powder coatings. The standard range comprises the 16 colours.

Other colours with a BS or RAL number can be supplied to special order.

Polyester powder coating is in accordance with BS 6496:1984 and is approved by British Board of Agrément Certificate No. 86/1671.

### Quality

Alumasc operates a quality assurance management system which is independently audited to BS EN ISO 9001:2000.

### Environmental

Alumasc's manufacturing site at St Helens is audited by Underwriters Laboratories to the ISO 14001:2004 Environmental Management Standard. Similar accreditation is currently being completed for the entire business at Alumasc's Burton Latimer site.

### Approvals

Standard products are approved by British Board of Agrément Certificate No. 86/1671



## Product Datasheet

# Aluminium Downpipe Systems

Ref: PD002RW

### General

#### Manufacture

Alumasc aluminium downpipe systems are produced at the Alumasc works at Burton Latimer, Northamptonshire, UK.

Heritage Aluminium	Heavy grade extrusions in material 6063 T6, complemented by a full range of precision cast fittings in commercial LM2 and LM6 grades of aluminium alloy, all conforming to relevant British Standard and combining strength with light weight
Flushjoint Aluminium	Precision extruded in material 6063, T6 to BS1474:1972 to combine strength with light weight .
Guardian Aluminium	Precision extruded in material 6063, T6 to BS1474:1972 to combine strength with light weight .

#### Durability

Aluminium downpipe systems have a low maintenance life in excess of 40 years in rural and suburban conditions, and in excess of 25 years in industrial and marine conditions.

#### Compatibility

Direct aluminium contact with dissimilar metals or with materials containing lime or cement should be avoided. The polyester coating is an insulation but a liberal coating of bitumen will be an additional safety factor. The use of aluminium in conjunction with copper roofs, cladding or flashings should be avoided. Contact Alumasc Technical Services for advice where heavily polluted atmospheres or marine conditions are involved for advice on material choice.

#### Fire Rating

Non-combustible to BS 476, Part 4: 1970 (1984). Melting temperature for aluminium is approximately 660°C.

#### Lightning Conductivity

The need for a lightning protection system is a decision to be made between the architect, the builder and the lightning protection engineer. This should be based on the risk factor as calculated in BS 6651:1999. When such a system is chosen for a building all metal gutters should be cross bonded into it. Both economy and practicality indicate that the eaves gutter can be used in place of an eaves conductor tape by use of the Alumasc Lightning Link.

#### Health, Safety & Environmental

Material Safety (COSHH) and Environmental Data Sheets can be downloaded from [www.alumascrainwater.co.uk](http://www.alumascrainwater.co.uk)

## Product Datasheet

# Aluminium Downpipe Systems

Ref: PD002RW

### General

#### Maintenance - Routine Inspection

- Regularly clean out rainwater heads and gutters and ensure that downpipes are clear at all times.
- Check that joints and fixings are secure by periodic inspection, not less than twice a year, and preferably at the beginning of Autumn and again at the end of Winter.
- Brush down unpainted surfaces lightly to inspect if required.
- Plain finish goods will develop a natural grey aluminium oxide coating which forms a hard protective layer, preventing additional oxidization.
- Even with a well fixed installation, ladders should not be rested against the gutters.
- Clean polyester coated surfaces by regularly washing down with a warm detergent solution, and maintain paintwork in good condition. Do not clean with caustic or abrasive materials. In aggressive atmospheres such as marine environments and industrial areas BS 6496:1984 requires this cleaning to be carried out at up to three month intervals to maintain optimum appearance and durability.
- Lightning linkage fixings should be tested regularly in accordance with the specialist electrical maintenance instructions.

#### Technical Support

Technical advice is available from Alumasc Technical Services via:

Telephone	+44 (0)1744 648400
Facsimile	+44 (0)1744 648401
Email	technical@alumasc-exteriors.co.uk

Alumasc Exterior Building Products Ltd pursues a policy of constant product development and information contained within this datasheet is therefore subject to change without notice. The customer is responsible for ensuring that each product is fit for its intended purpose and that the conditions for use are suitable. All quoted data is nominal and subject to production tolerances.