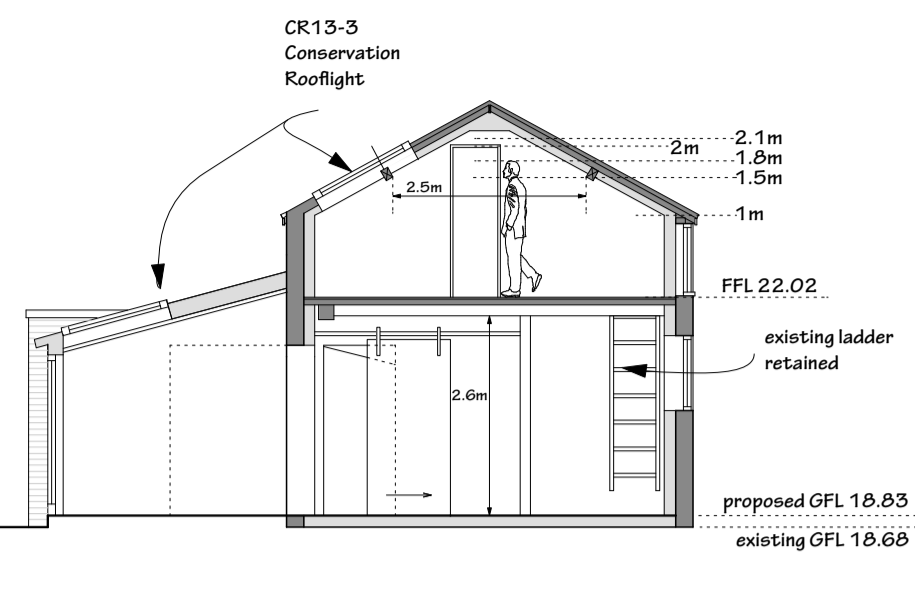


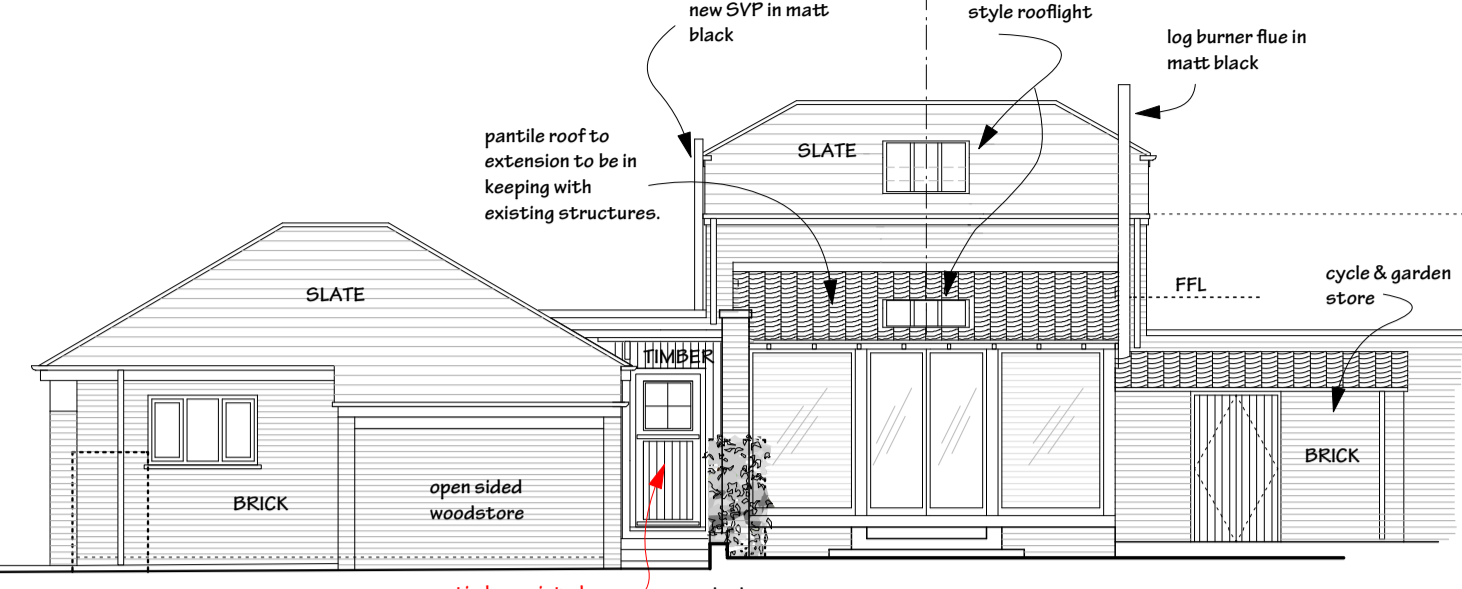
Check dimensions before use and notify the Architect of any discrepancies immediately.

© Copyright belongs to the Architect.

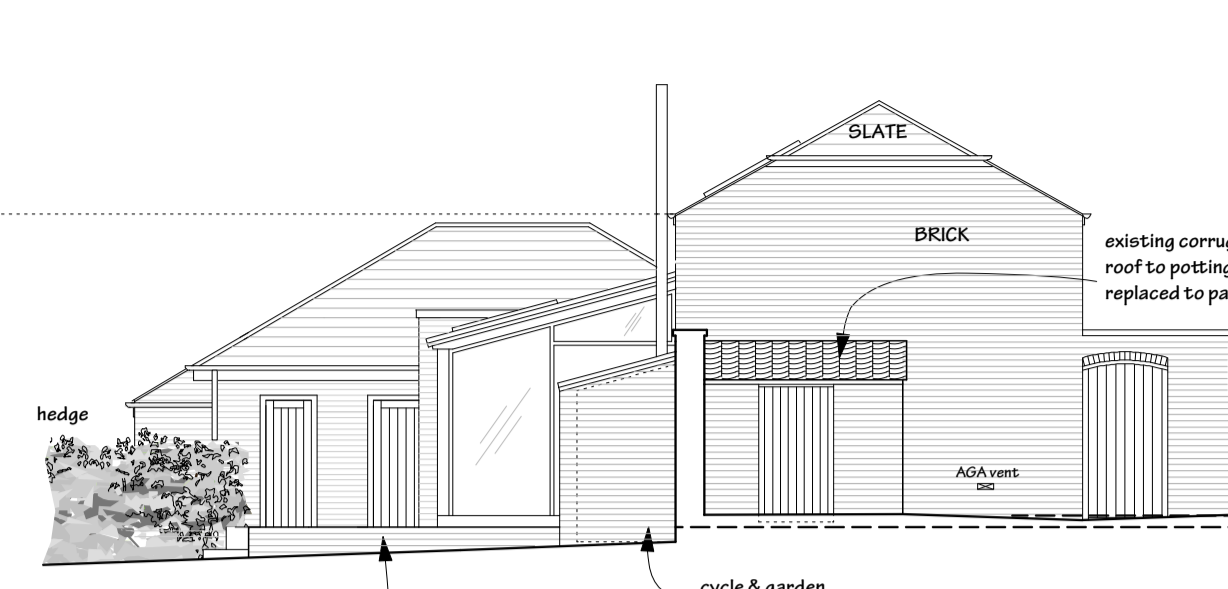
SECTION A-A 1:100



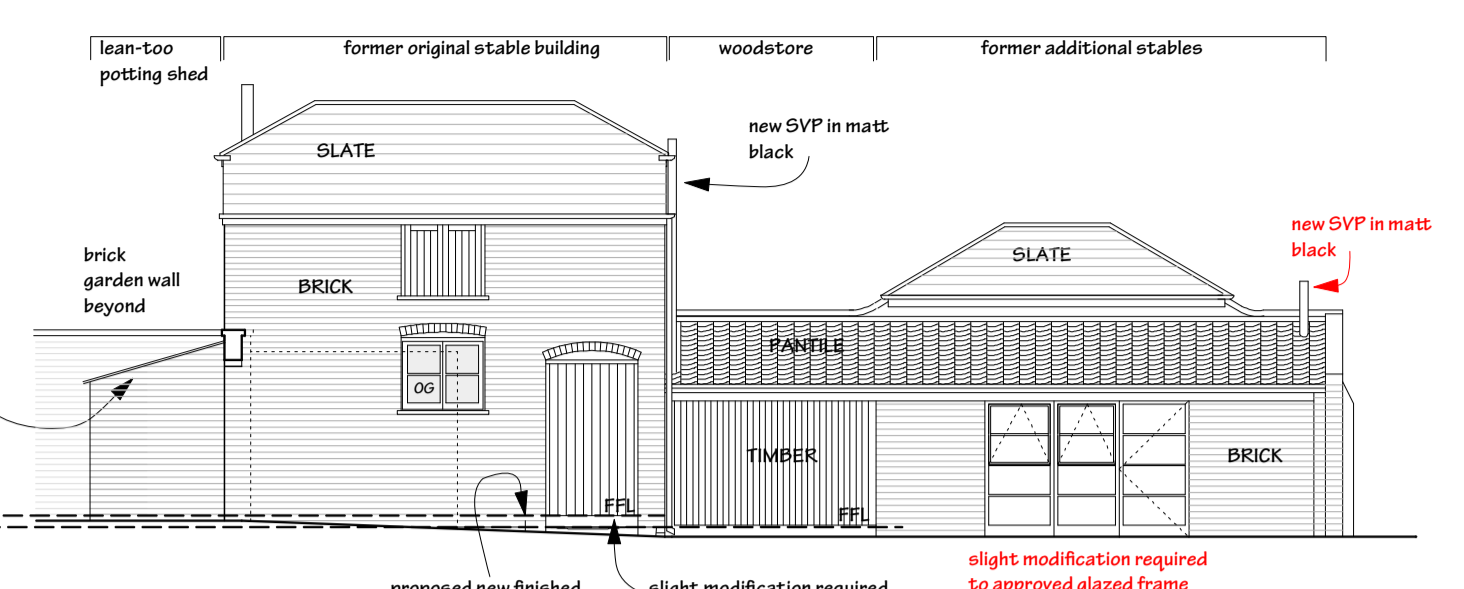
NORTH ELEVATION 1:100



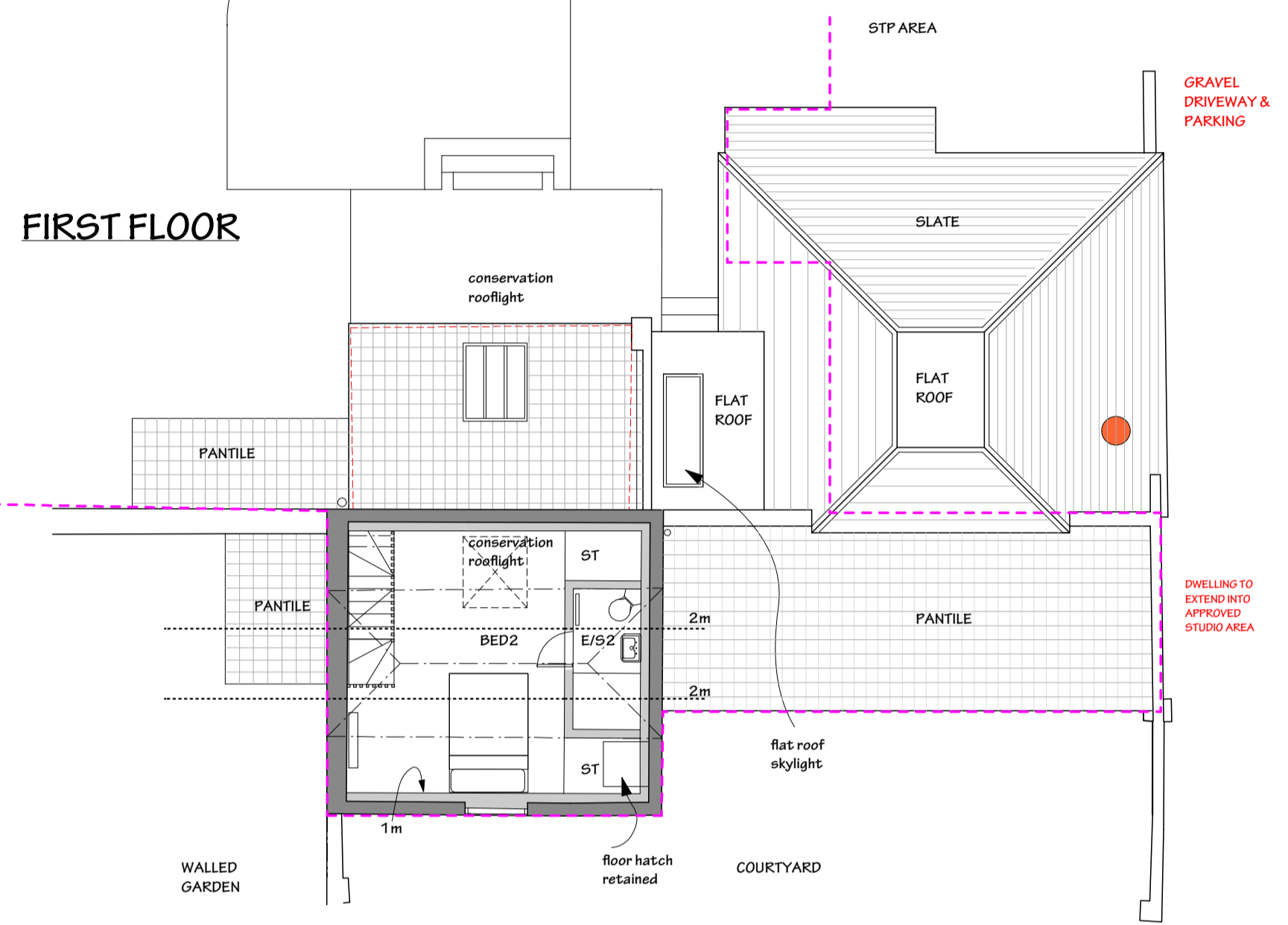
WEST ELEVATION 1:100



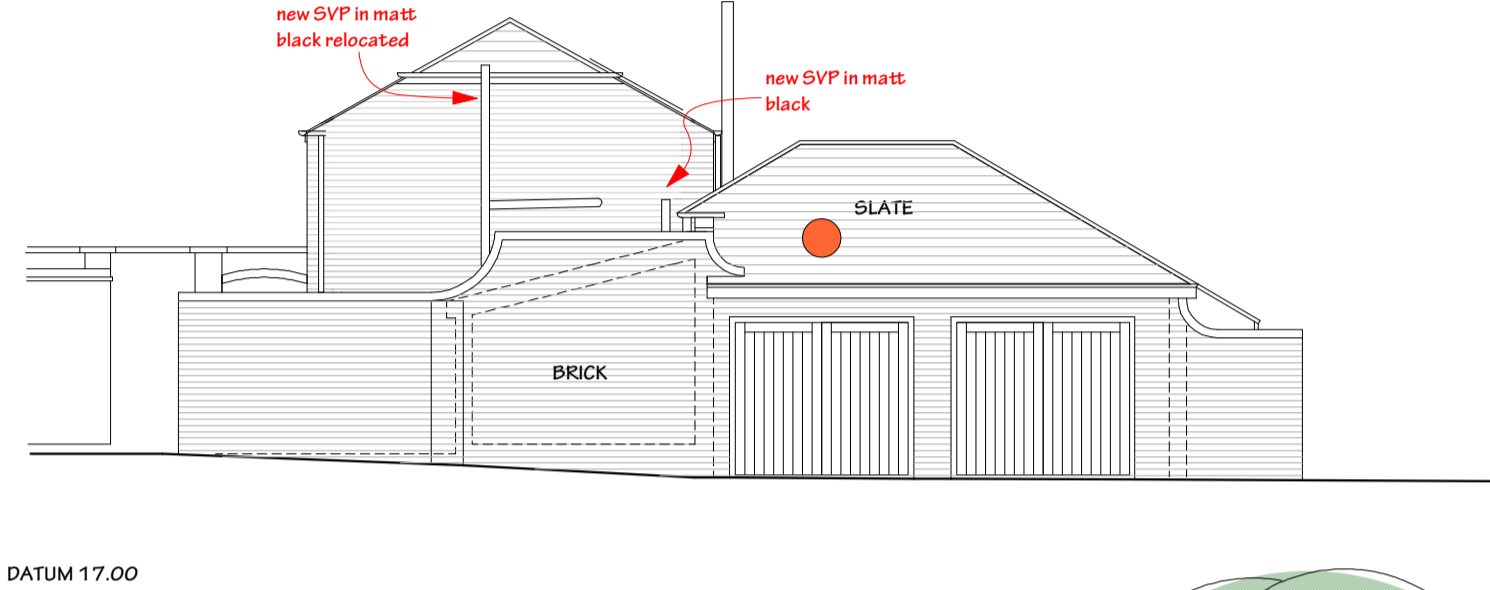
SOUTH ELEVATION 1:100



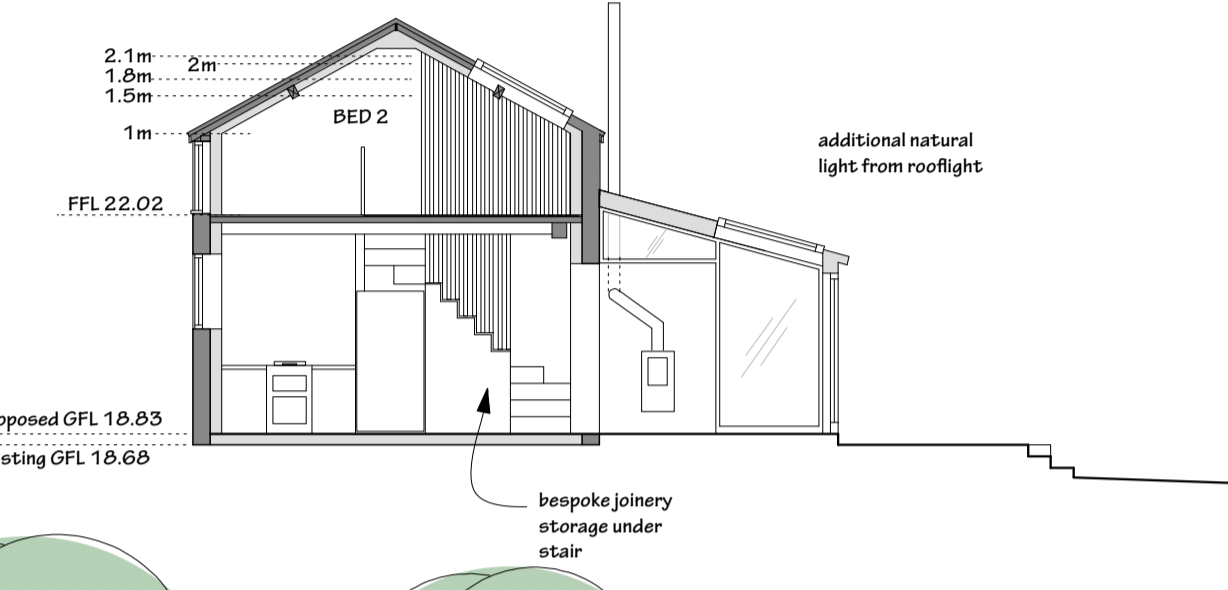
FIRST FLOOR



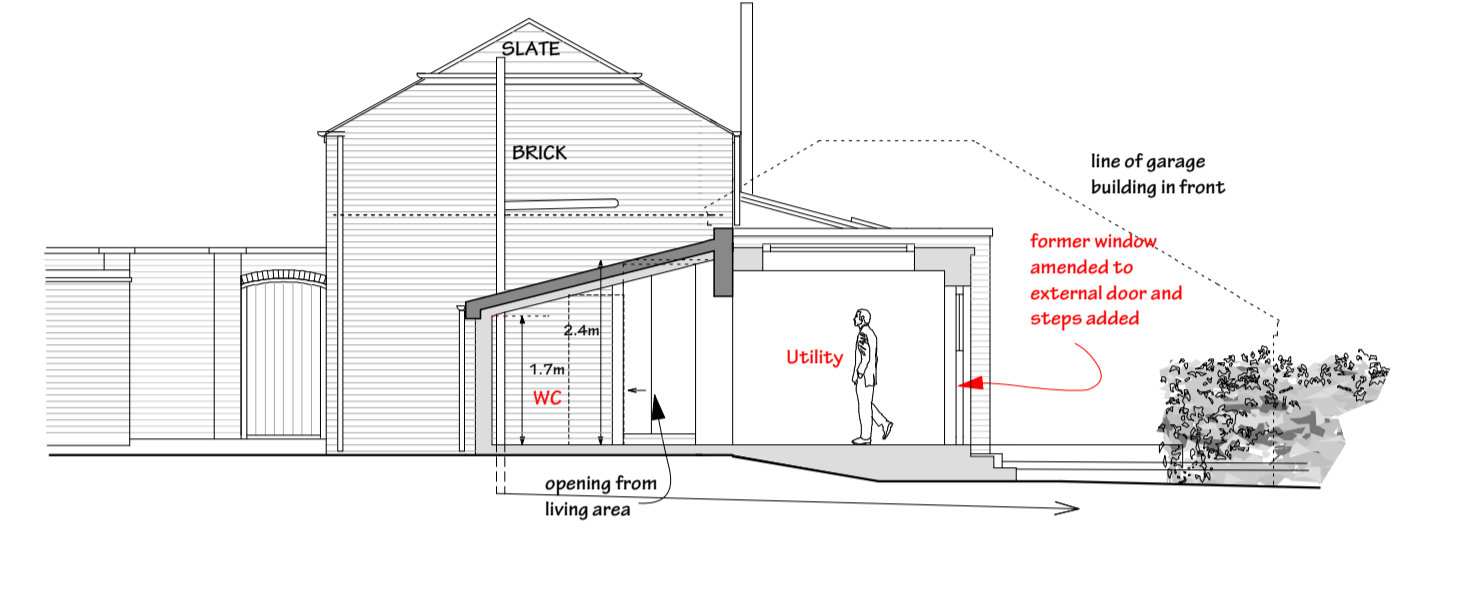
EAST ELEVATION 1:100



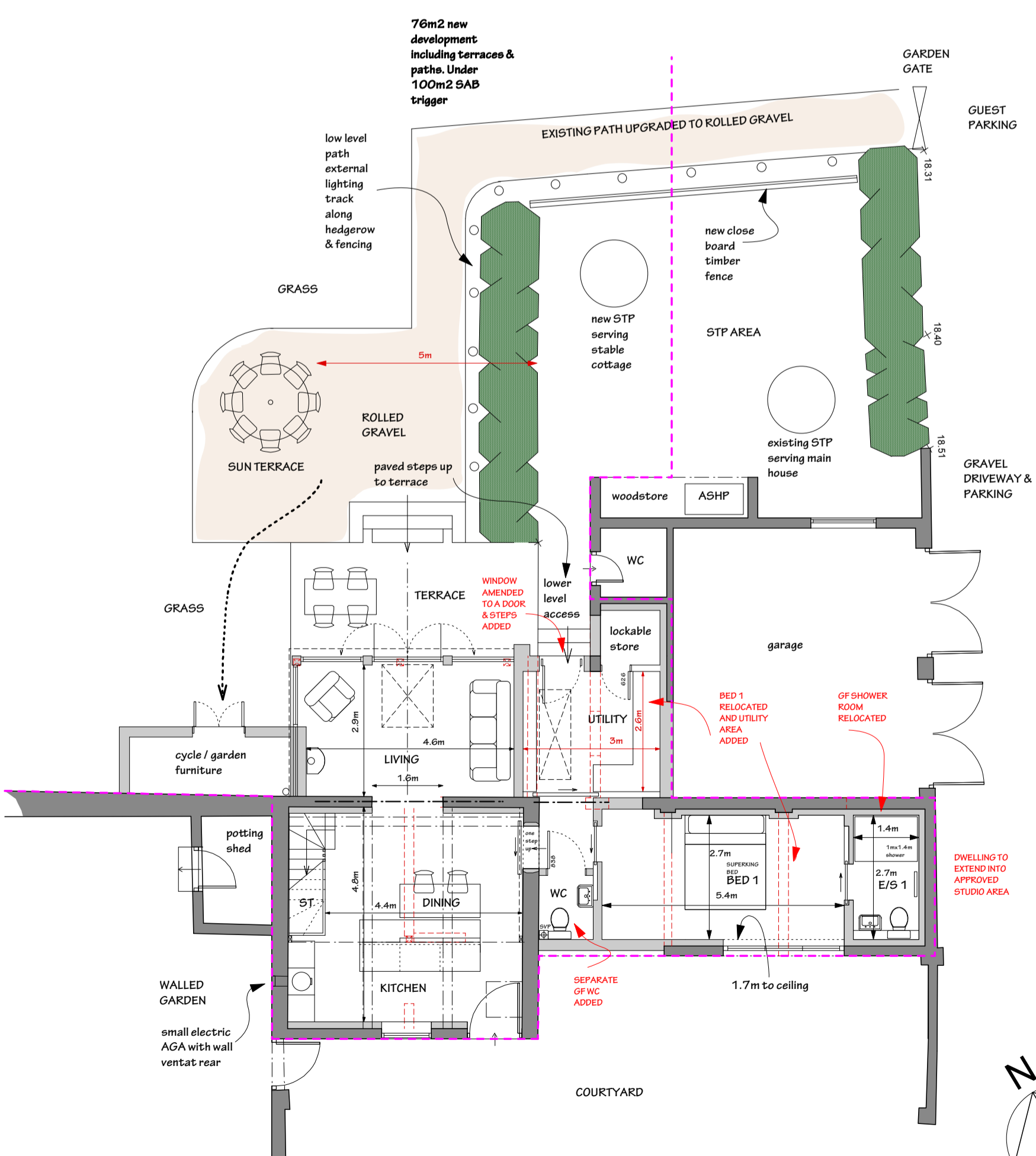
SECTION A-A 1:100



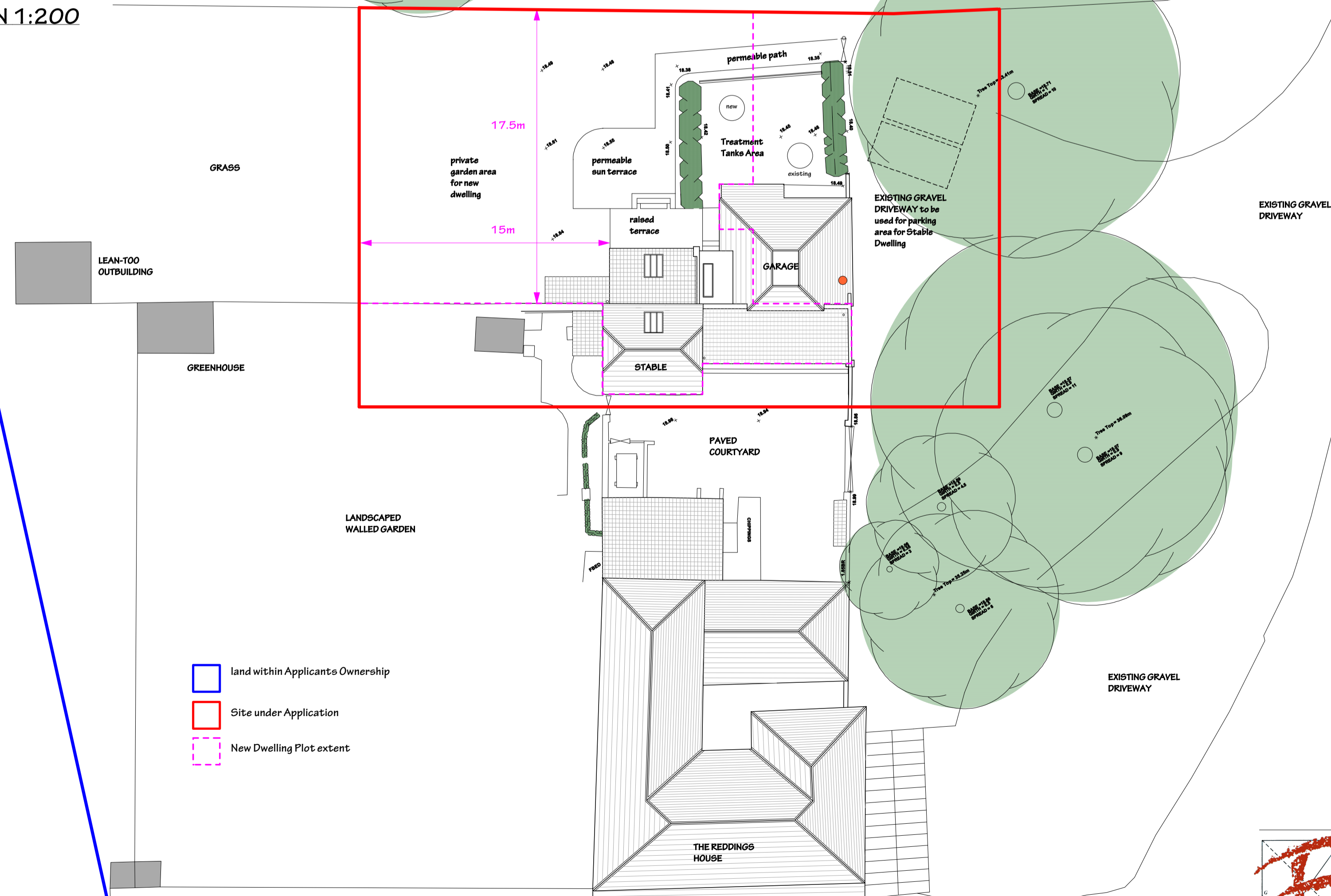
SECTION B-B 1:100



GROUND FLOOR

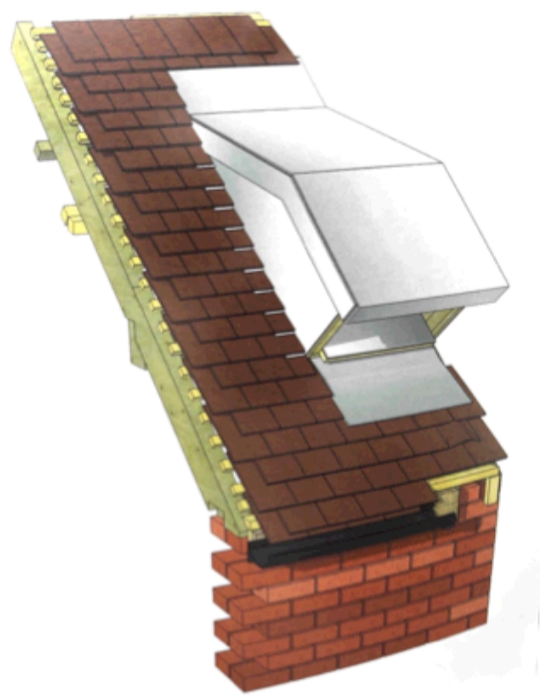
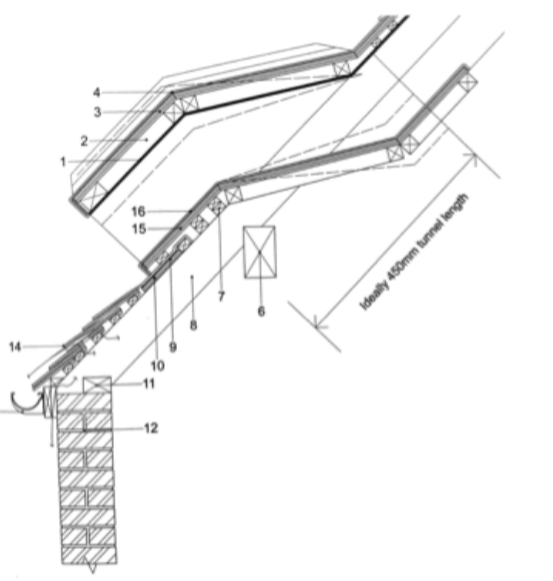


SITE PLAN 1:200



PROPOSED BAT MITIGATION DORMER TYPE ROOF ACCESS

see CE Report for details & specification



PROPOSED AMENDMENTS (notes in red)

- Revisions: REV A: HD: 08/01/2021 - First Issue; REV B: HD: 08/02/2021 - Planning Issue; REV C: HD: 16/02/2021 - Revised Planning Issue; REV D: HD: 10/03/2021 - Drawing notes revised for validation; REV E: HD: 19/04/2021 - Drawing revised as per Officers comments; REV F: HD: 07/02/2022 - Non - Material Amendment Issue

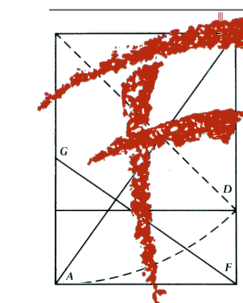


Table with project information: Job Title (THE REDDINGS, Frertherne, Stable Conversion), Drawing Title (Proposed Plans & Elevations), Drawn (HD), Checked, Date (20.10.2020), Scale (1:100 @ A1), Job Number (1657.20), Work Stage (NMA APP), Drawing Number (AL.P.100), and a revision column.