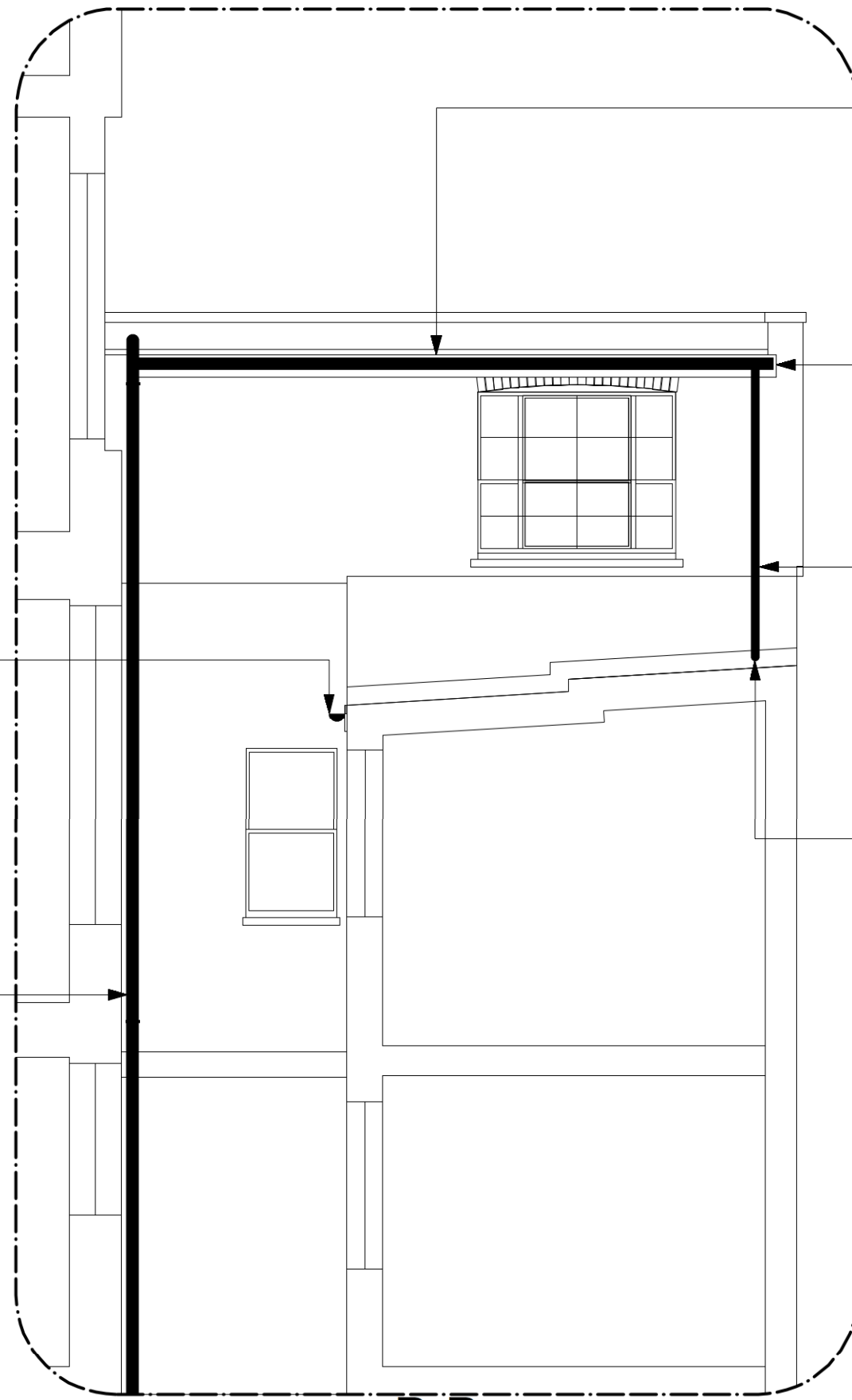


A-A



B-B

Note:
All external pipework and rainwater goods to be Alumasc Heritage Aluminium, painted black (RAL 9005)

P O R T I C O

The Portico Hotel
30 St. George's Drive, Victoria, London, SW1V 4BN
© copyright The Portico Hotel

Notes

Project The Portico Hotel London Victoria 30 St.
George's Drive, Victoria, London, SW1V 4BN

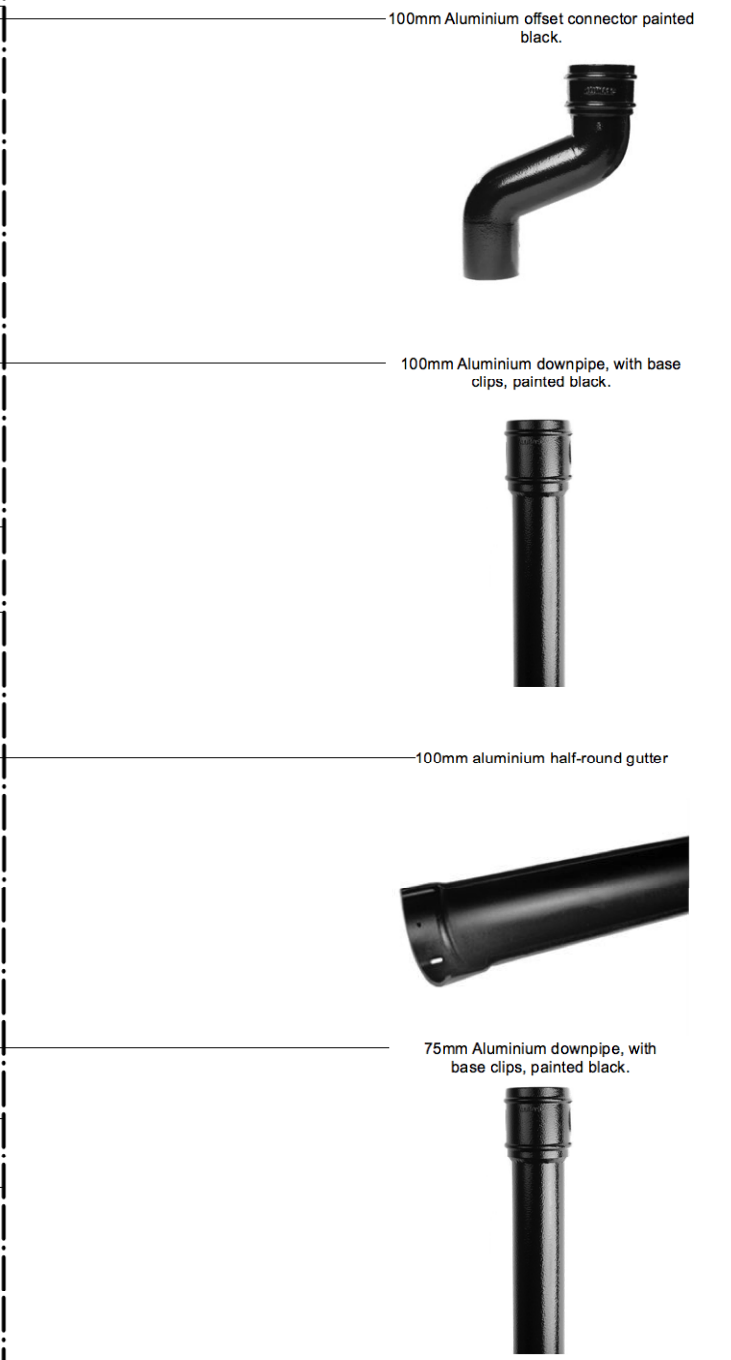
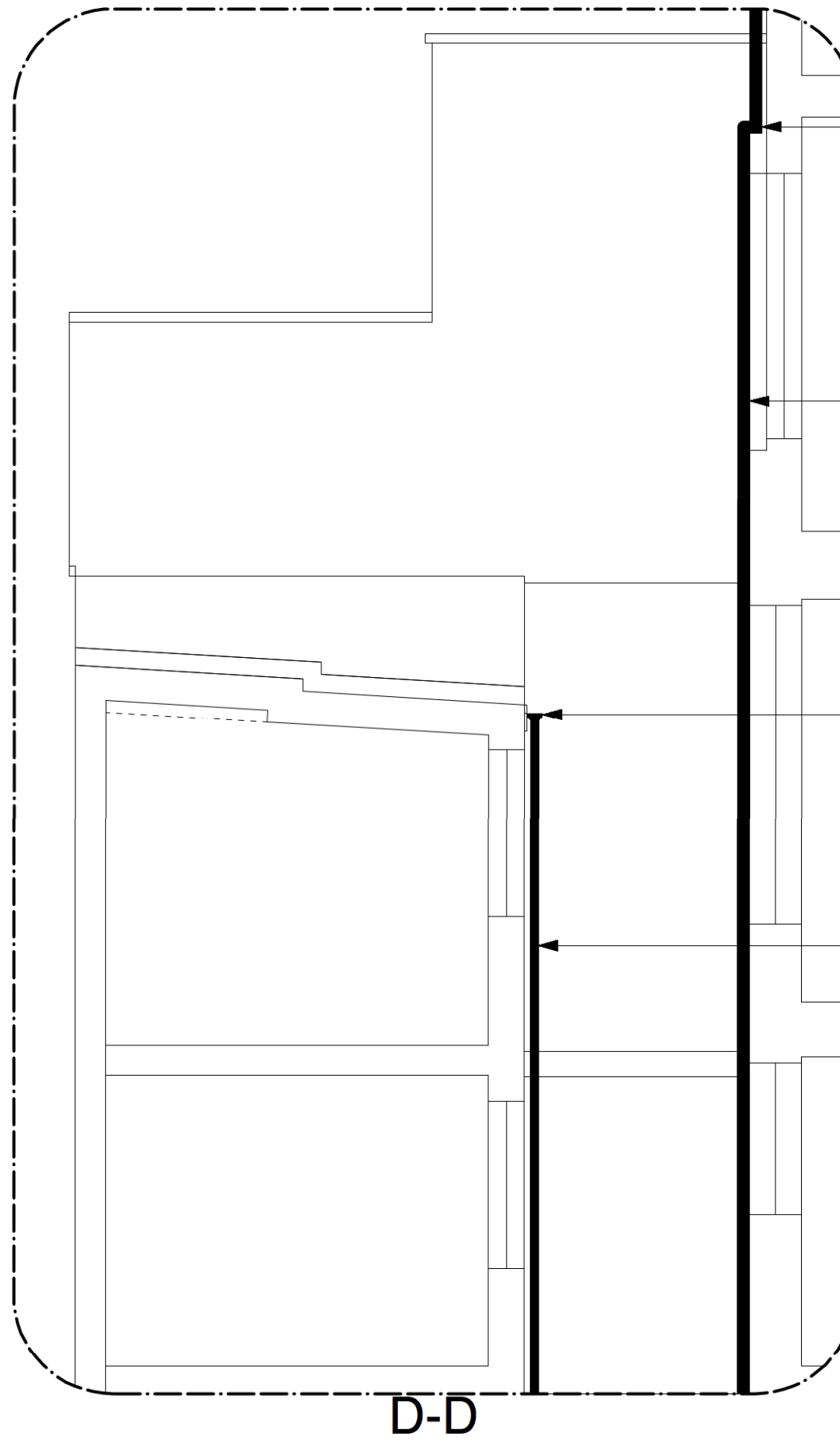
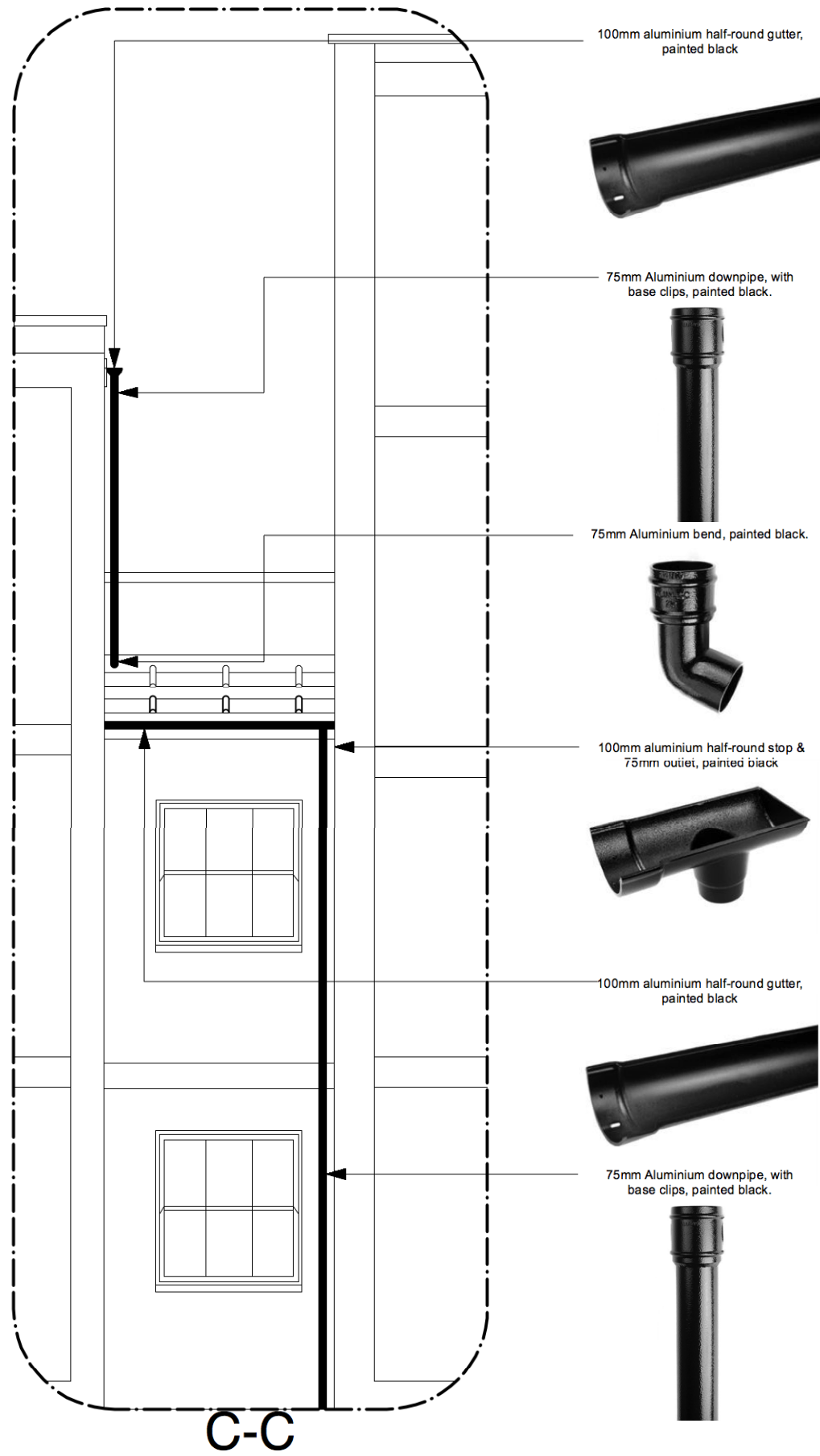
Status

-

Drawing

No. 30 - Pipework & Rainwater Goods 1/2

Project Number	Drawing Ref	Revision	Scale	Page size
001	903		1:100	A3



Note:
All external pipework and rainwater goods to be Alumasc Heritage Aluminium, painted black (RAL 9005)

P O R T I C O

The Portico Hotel
30 St. George's Drive, Victoria, London, SW1V 4BN
© copyright The Portico Hotel

Notes

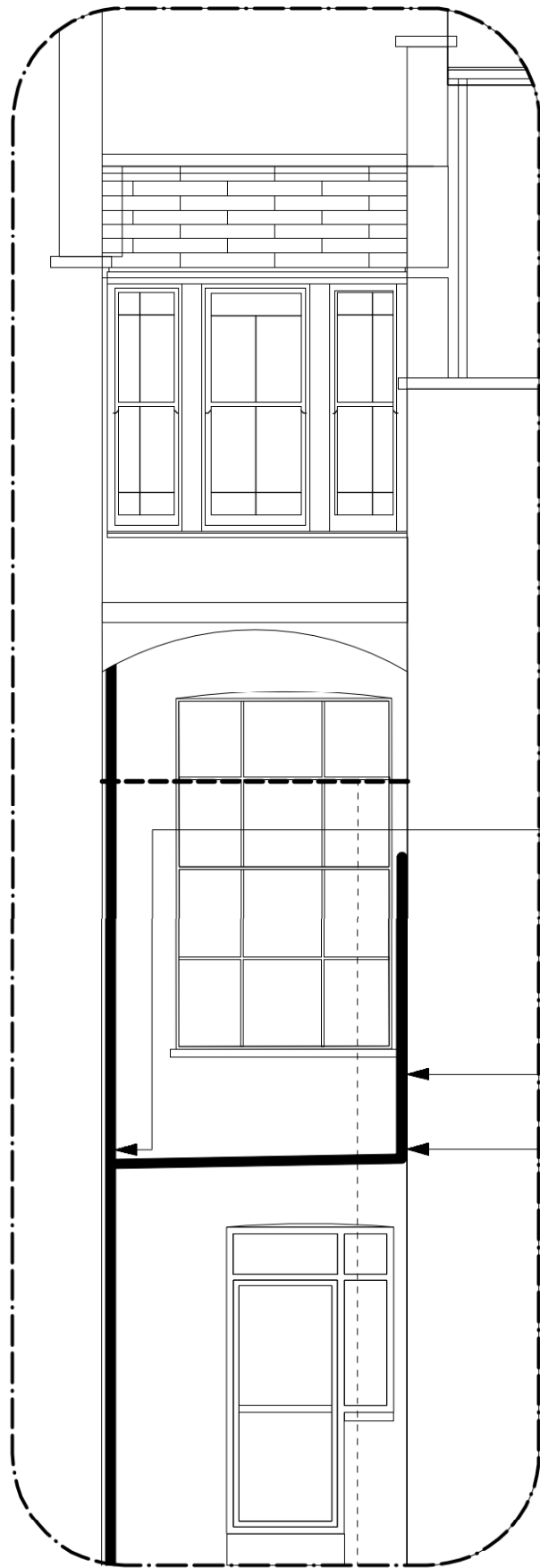
Project The Portico Hotel London Victoria 30 St. George's Drive, Victoria, London, SW1V 4BN

Status

-

Drawing No. 30 - Pipework & Rainwater Goods 2/2

Project Number	Drawing Ref	Revision	Scale	Page size
001	904		1:100	A3



A-A

100mm Aluminium 90° bend, painted black.



100mm Aluminium downpipe, with base clips, painted black.



Aluminium hopper, painted black.



75mm Aluminium branch, painted black.



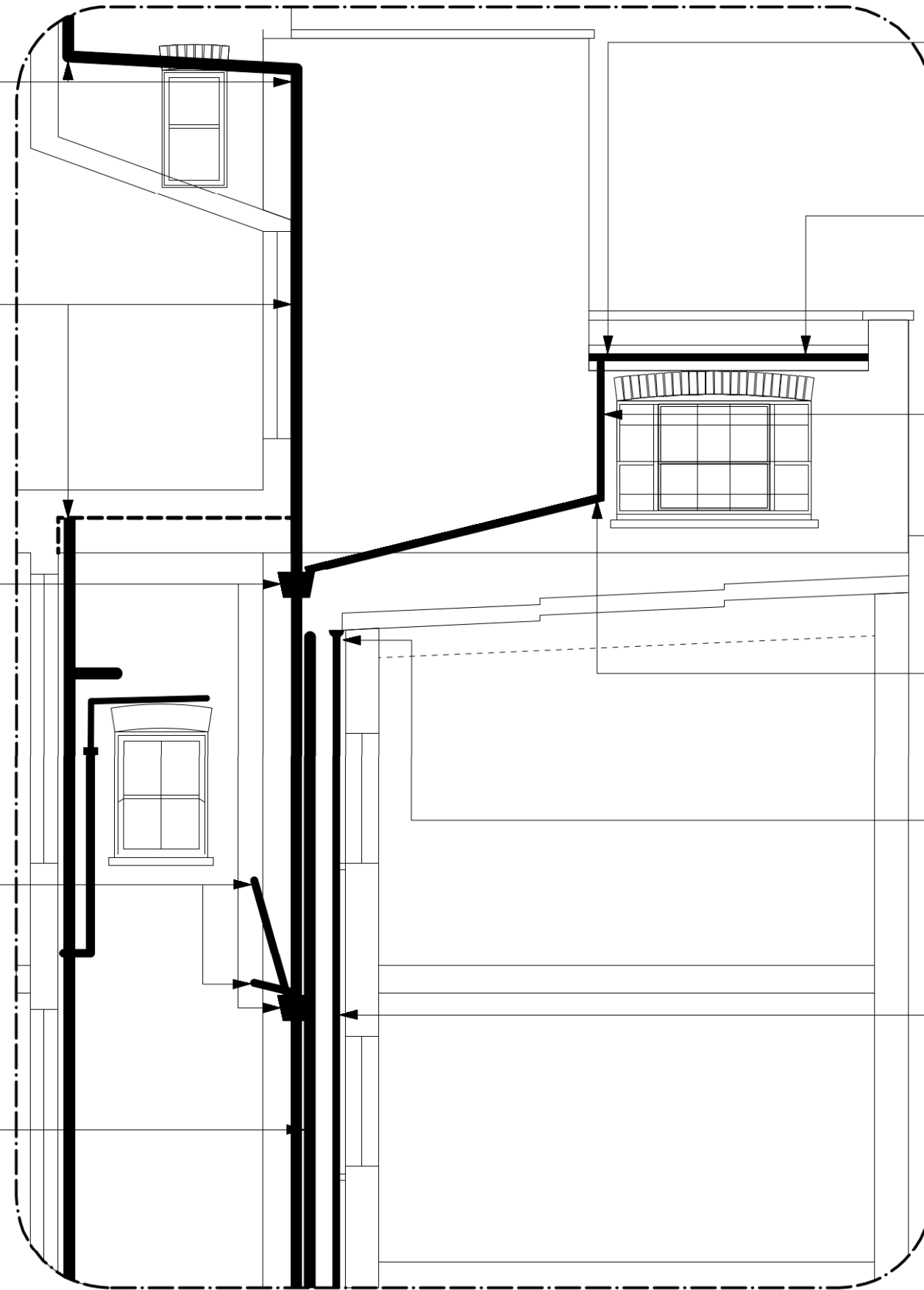
75mm Aluminium downpipe, painted black.



75mm Aluminium 90° bend, painted black.



100mm Aluminium downpipe, with base clips, painted black.



B-B

100mm Aluminium half-round stop & 75mm outlet, painted black



100mm Aluminium half-round gutter, painted black



75mm Aluminium downpipe, painted black.



75mm Aluminium bend, painted black.



100mm Aluminium half-round gutter, painted black



75mm Aluminium downpipe, with base clips, painted black.



Note:

All external pipework and rainwater goods to be Alumasc Heritage Aluminium, painted black (RAL 9005)

P O R T I C O

The Portico Hotel
30 St. George's Drive, Victoria, London, SW1V 4BN
© copyright The Portico Hotel

Notes

Project The Portico Hotel London Victoria 30 St.
George's Drive, Victoria, London, SW1V 4BN

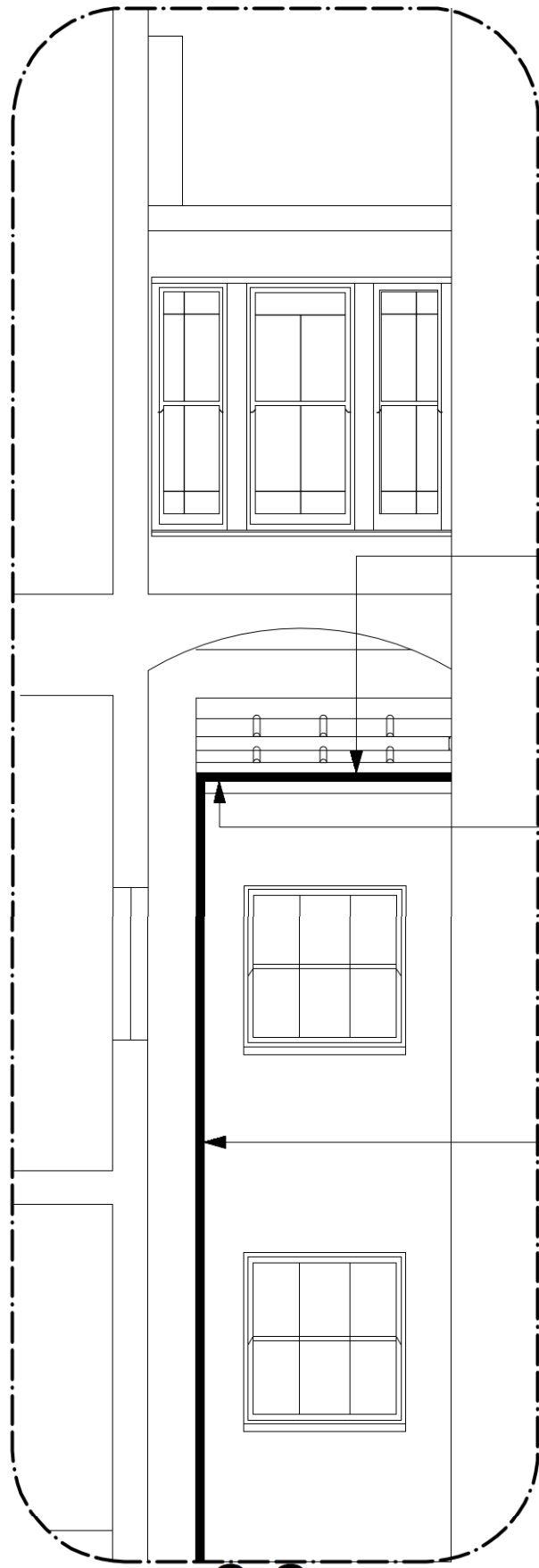
Status

-

Drawing

No. 32 - Pipework & Rainwater Goods 1/2

Project Number	Drawing Ref	Revision	Scale	Page size
001	908		1:100	A3



100mm Aluminium half-round gutter, painted black



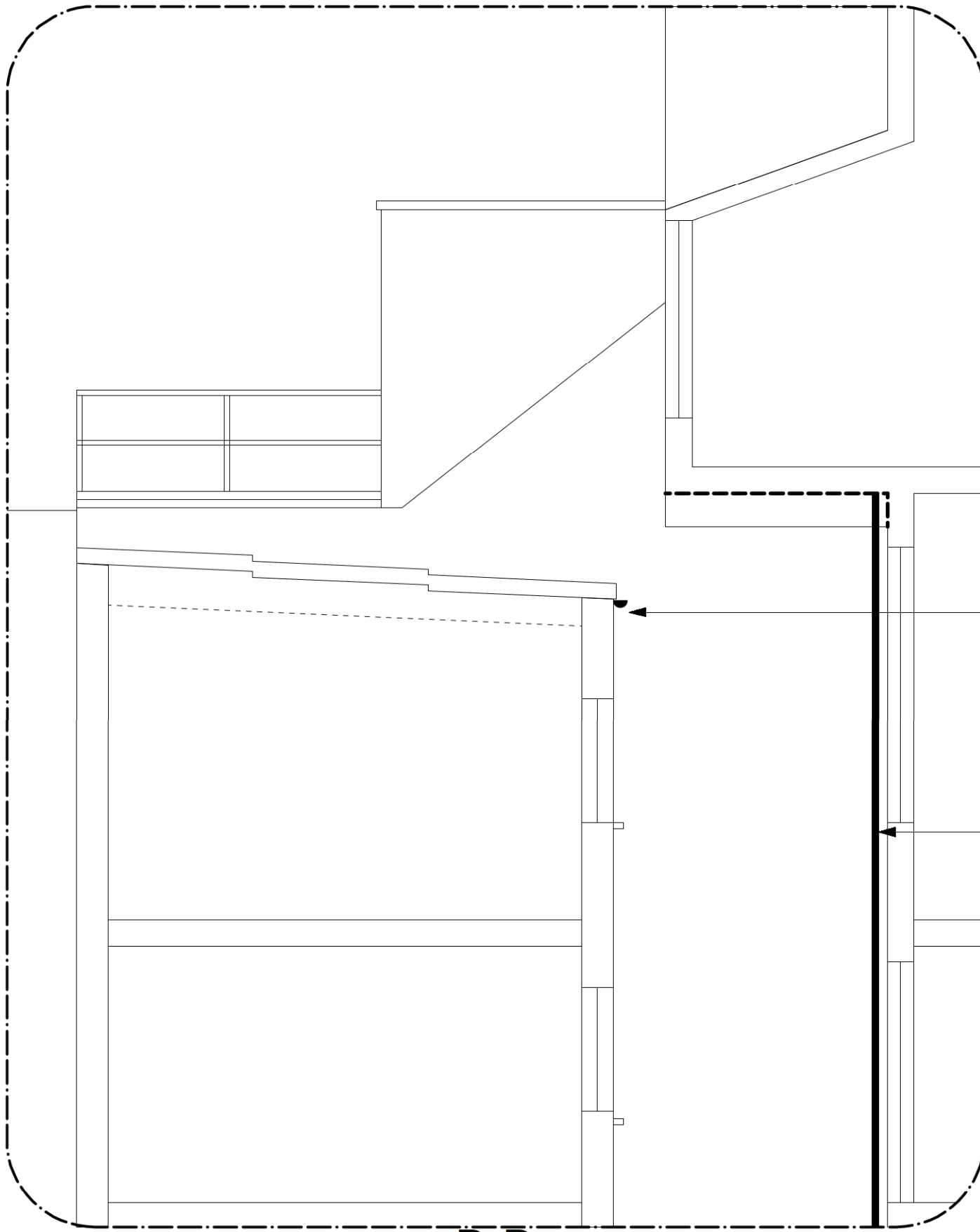
100mm Aluminium half-round stop & 75mm outlet, painted black



75mm Aluminium downpipe, with base clips, painted black.



C-C



100mm Aluminium half-round gutter, painted black



75mm Aluminium downpipe, with base clips, painted black.



D-D

Note:
All external pipework and rainwater goods to be Alumasc Heritage Aluminium, painted black (RAL 9005)

P O R T I C O

The Portico Hotel
30 St. George's Drive, Victoria, London, SW1V 4BN
© copyright The Portico Hotel

Notes

Project The Portico Hotel London Victoria 30 St.
George's Drive, Victoria, London, SW1V 4BN

Status

-

Drawing No. 32 - Pipework & Rainwater Goods 2/2

Project Number	Drawing Ref	Revision	Scale	Page size
001	909		1:100	A3