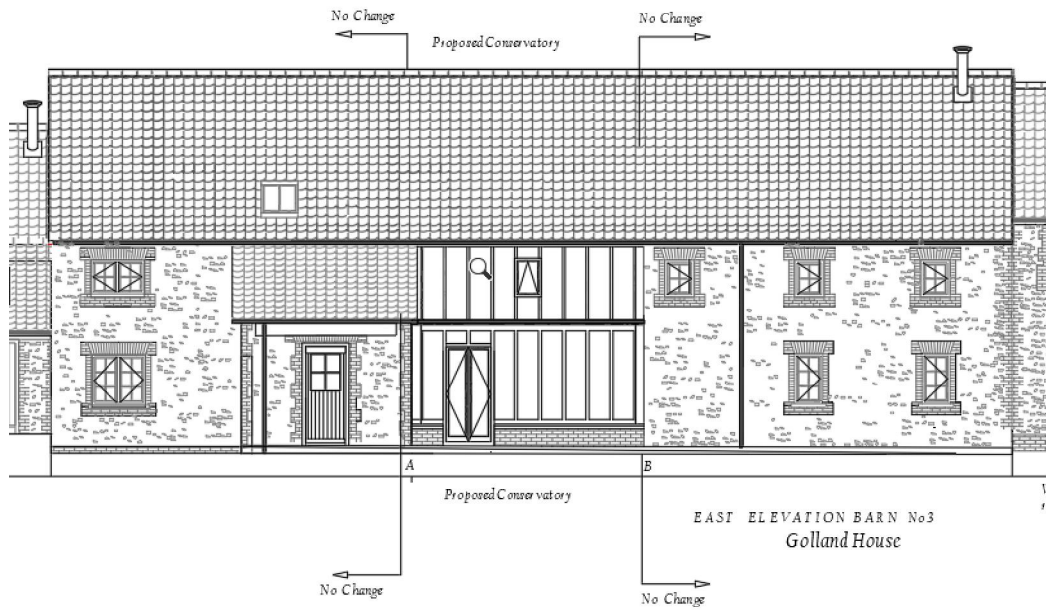


Design and Access Statement

Conservatory for Golland House, Barn no 3, Home Farmyard, West Raynham,



Proposed, East Elevation



Existing East Elevation

A: USE

What will be the principal use of the development?

Conservatory

SITE LOCATION



Site Location within the red line

The site is one of 5, Barn Conversions, the proposals in this application are not visible from the local highway or any public area.

Description.

An external Conservatory, accessed by external double-glazed doors from the main building.

Design

The design is this proposal has no affect on any access, it does not overlook or interfere with any privacy issues of neighbours.

Being an East facing conservatory it takes advantage of the morning sun adding to the comfort of the home and in the summer provides an amenity which will serve as a

comfortable internal space, improving the utility of the dwelling. The writer has had an east facing conservatory in a previous home and they work well.

The conservatory will comprise a black painted wooden frame matching the main building.

ACCESS AND SAFETY

No change.

Biodiversity and Trees

The proposal will not cause harm to wildlife in the surrounding area, or to areas beyond.

Summary

This application will enhance the utility and form of the Barn known as Golland House and cause no demonstrable harm to anyone.