

SVP 1 - 110MM AND 50MM THROUGH CEILING TO FLOOR LEVEL (SHADED GREY)

SVP 2 - 110MM AND 50MM THROUGH CEILING ACROSS AT HIGH LEVEL THEN DOWN TO FLOOR LEVEL (SHADED GREY)

SVP 3 - 110MM AND 50MM THROUGH CEILING ACROSS AT HIGH LEVEL TO SIDE OF BEAM THEN DOWN TO FLOOR LEVEL NEXT TO COLUMN(SHADED GREY)

SVP 4 - 110MM AND 50MM THROUGH CEILING ACROSS AT HIGH LEVEL THEN THROUGH BRICKED UP WINDOW OPENING AT HIGH LEVEL

SVP 5 - 110MM AND 50MM THROUGH CEILING ACROSS FIREPLACE AT HIGH LEVEL THEN DOWN TO FLOOR LEVEL NEXT TO FIREPLACE (SHADED GREY)

CEILING AND BEAMS THROUGHOUT BOARDED IN FIRE LINE BOARD EXISTING CONSTRUCTION TO BE ASSESSED BY CONTRACTOR TO CONFIRM FIXINGS.



**Paul Astill  
& Associates**

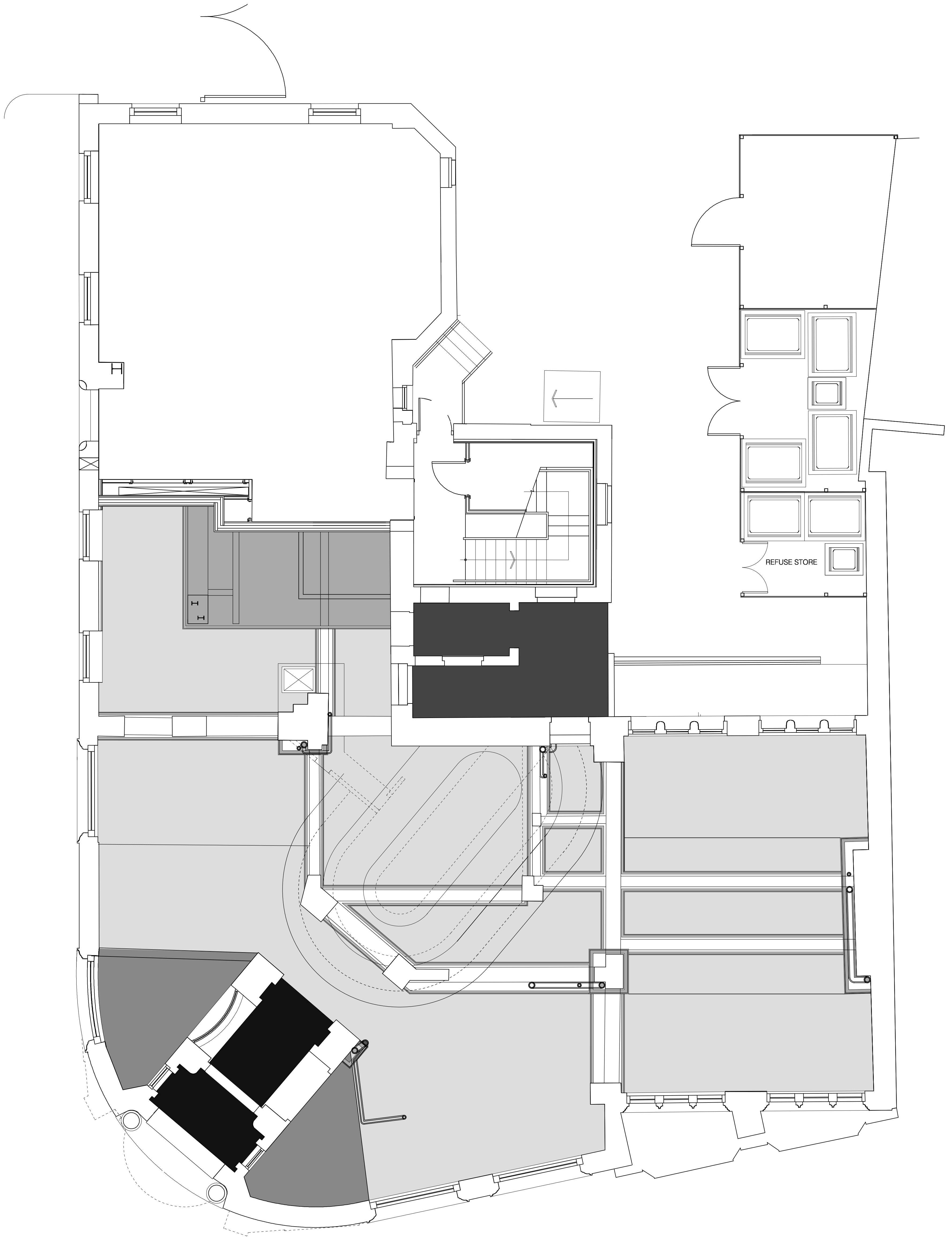
Tel: 07956 922257  
www.astillassociates.com

Registered Office:  
20 Underbank Road  
Stockport  
M16 1QY

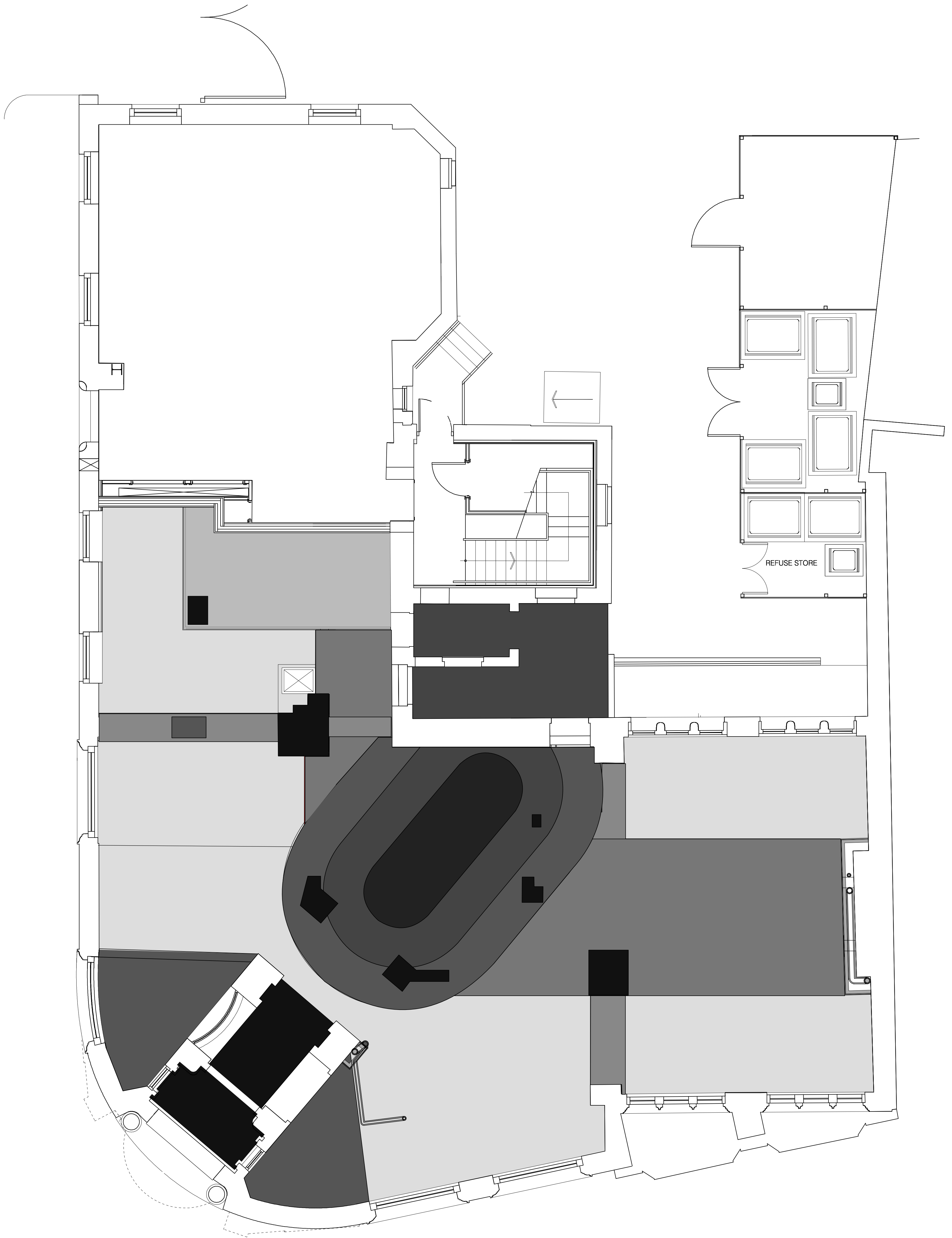
Check all measurements prior to any work  
commencing. Do not start or proceed  
with any work until the necessary  
permissions have been obtained. No  
responsibility or works carried out without  
the owner's written consent. All work to be  
completed in accordance with current building regulations.

**PROJECT**  
**CLIENT**  
**DATE**  
**JOB NO**  
**DRAWING NO**  
**TITLE**  
**SCALE**


WHITE LION, 20 GREAT UNDERBANK, STOCKPORT  
STOCKPORT LEISURE LTD  
JUNE 2021  
WL-01-22  
GROUND FLOOR CEILING PLAN EXISTING  
1:50 (AT A1)



- ALL CEILING BEAMS TO HAVE MF CARCASS SET 50MM FROM BEAM SIDES AND 20MM TO UNDERSIDE WITH KNAUF ACOUSTIC WOOL INSULATION AND DOUBLE LAYER OF 12.5MM SOUNDBLOCK BOARD WITH STAGGERED JOINTS ACOUSTIC MASTIC POINTS MEETING EXISTING CEILING. DRYLINED WITH PAINT FINISH.
- MAIN CEILING SECTIONS TO HAVE MF CARCASS HUNG ON ACOUSTIC CEILING HANGERS SET 100MM BELOW LINE OF EXISTING CEILING. KNAUF ACOUSTIC WOOL INSULATION AND DOUBLE LAYER OF 12.5MM SOUNDBLOCK BOARD WITH STAGGERED JOINTS ACOUSTIC MASTIC POINTS MEETING BEAMS/ TO BE ANGLED UP TO EXTERNAL WINDOWS IF NECESSARY ENSURING TOP OF WINDOW IS VISIBLE.
- ORIGINAL CEILING TO ENTRANCE TO REMAIN AS EXISTING. WITH NEW PAINT FINISH.
- LOWERED BULKHEAD SECTIONS TO HAVE MF CARCASS HUNG ON ACOUSTIC CEILING HANGERS SET 100MM BELOW LINE OF EXISTING CEILING. KNAUF ACOUSTIC WOOL INSULATION AND DOUBLE LAYER OF 12.5MM SOUNDBLOCK BOARD WITH STAGGERED JOINTS ACOUSTIC MASTIC POINTS MEETING BEAMS/ TO BE ANGLED UP TO EXTERNAL WINDOWS IF NECESSARY ENSURING TOP OF WINDOW IS VISIBLE.
- LOWERED CEILING AREA APPROX 2400MM C/H UNDER BEAMS AND ABOVE DISABLED W/C TO HAVE MF CARCASS HUNG ON ACOUSTIC CEILING HANGERS. KNAUF ACOUSTIC WOOL INSULATION AND DOUBLE LAYER OF 12.5MM SOUNDBLOCK BOARD WITH STAGGERED JOINTS ACOUSTIC MASTIC POINTS MEETING BEAMS/WALLS. DRYLINED WITH PAINT FINISH.
- STAIRCASE CEILING TO HAVE MF CARCASS HUNG ON ACOUSTIC CEILING HANGERS KNAUF ACOUSTIC WOOL INSULATION AND DOUBLE LAYER OF 12.5MM SOUNDBLOCK BOARD WITH STAGGERED JOINTS ACOUSTIC MASTIC POINTS MEETING WALLS. DRYLINED WITH PAINT FINISH.
- SOIL PIPES CLAD IN 5KG MUFTILAG ACOUSTIC LAGGING WITH RODDING OUT POINTS AS NECESSARY
- COLUMNS MEETING SOIL PIPES AND CHIMNEY BREAST TO HAVE 76MM MF CARCASS SET AWAY FROM COLUMN KNAUF ACOUSTIC WOOL INSULATION AND DOUBLE LAYER OF 12.5MM SOUNDBLOCK BOARD WITH STAGGERED JOINTS ACOUSTIC MASTIC POINTS MEETING BEAMS, COLUMN OR WALL. DRYLINED WITH PAINT FINISH. ACOUSTIC ACCESS PANELS AT RODDING OUT POINTS. SPECIALIST FINAL FINISH TBC



- CEILING BEAMS REFER DWG WL - 01 - 23
- MAIN CEILING SECTIONS REFER DWG WL - 01 - 23
- ORIGINAL CEILING TO ENTRANCE TO REMAIN AS EXISTING. WITH NEW PAINT FINISH.
- LOWERED BULKHEAD SECTIONS REFER DWG WL - 01 - 23
- LOWERED CEILING AREA REFER DWG WL - 01 - 23
- STAIRCASE CEILING REFER DWG WL - 01 - 23
- BULKHEAD CARRYING EXTRACT, ELECTRICS, SERVICES AND AIRCONDITIONING DUCTWORK. ENSURE ACOUSTIC PROPERTIES OF CEILING ABOVE ARE RETAINED WITH FIXINGS. TO HAVE M/F CARCASS HUNG ON ACOUSTIC HANGERS WITH KNAUFF ACOUSTIC WOOL INSULATION AND SINGLE LAYER SOUNDBLOCK BOARD, DRYLINED WITH PAINT FINISH FINAL SPECIALIST FINISH TBC
- BAR BULKHEAD A 300MM DEEP. ENSURE ACOUSTIC PROPERTIES OF CEILING ABOVE ARE RETAINED WITH FIXINGS. TO HAVE M/F CARCASS HUNG ON ACOUSTIC HANGERS WITH KNAUFF ACOUSTIC WOOL INSULATION AND SINGLE LAYER SOUNDBLOCK BOARD, TO SIDES AND UNDERSIDE CURED ENDS IN DOUBLE LAYER 6.5MM FLEXIBLE PLASTERBOARD WITH STAGGERED JOINTS. DRYLINED WITH PAINT FINISH FINAL SPECIALIST FINISH TBC
- BAR BULKHEAD B 300MM DEEP BELOW BULKHEAD A. ENSURE ACOUSTIC PROPERTIES OF CEILING ABOVE ARE RETAINED WITH FIXINGS. TO HAVE M/F CARCASS HUNG ON ACOUSTIC HANGERS WITH KNAUFF ACOUSTIC WOOL INSULATION AND SINGLE LAYER SOUNDBLOCK BOARD, TO SIDES AND UNDERSIDE CURED ENDS IN DOUBLE LAYER 6.5MM FLEXIBLE PLASTERBOARD WITH STAGGERED JOINTS. DRYLINED WITH PAINT FINISH FINAL SPECIALIST FINISH TBC
- BAR BULKHEAD C 300MM DEEP BELOW BULKHEAD B. ENSURE ACOUSTIC PROPERTIES OF CEILING ABOVE ARE RETAINED WITH FIXINGS. TO HAVE M/F CARCASS HUNG ON ACOUSTIC HANGERS WITH KNAUFF ACOUSTIC WOOL INSULATION AND SINGLE LAYER SOUNDBLOCK BOARD, TO SIDES AND UNDERSIDE CURED ENDS IN DOUBLE LAYER 6.5MM FLEXIBLE PLASTERBOARD WITH STAGGERED JOINTS. DRYLINED WITH PAINT FINISH FINAL SPECIALIST FINISH TBC



**Paul Astill  
& Associates**  
Tel: 01756 922527  
www.astillassociates.com

Project: 2021  
Drawing: 01  
Scale: 1:50

Check all measurements prior to any work commencing. Do not scale drawings. This drawing is for information only. It is not to be used for construction or other purposes without the written approval of the architect. It is subject to change without notice.

PROJECT  
CLIENT  
DATE  
JOB NO  
DRAWING NO  
TITLE  
SCALE

WHITE LION, 20 GREAT UNDERBANK, STOCKPORT  
STOCKPORT LEISURE LTD  
JUNE 2021  
WL - 01 - 23  
GROUND FLOOR CEILING PLAN PROPOSED  
FEATURE REQUIREMENTS  
1:50 (AT A1)