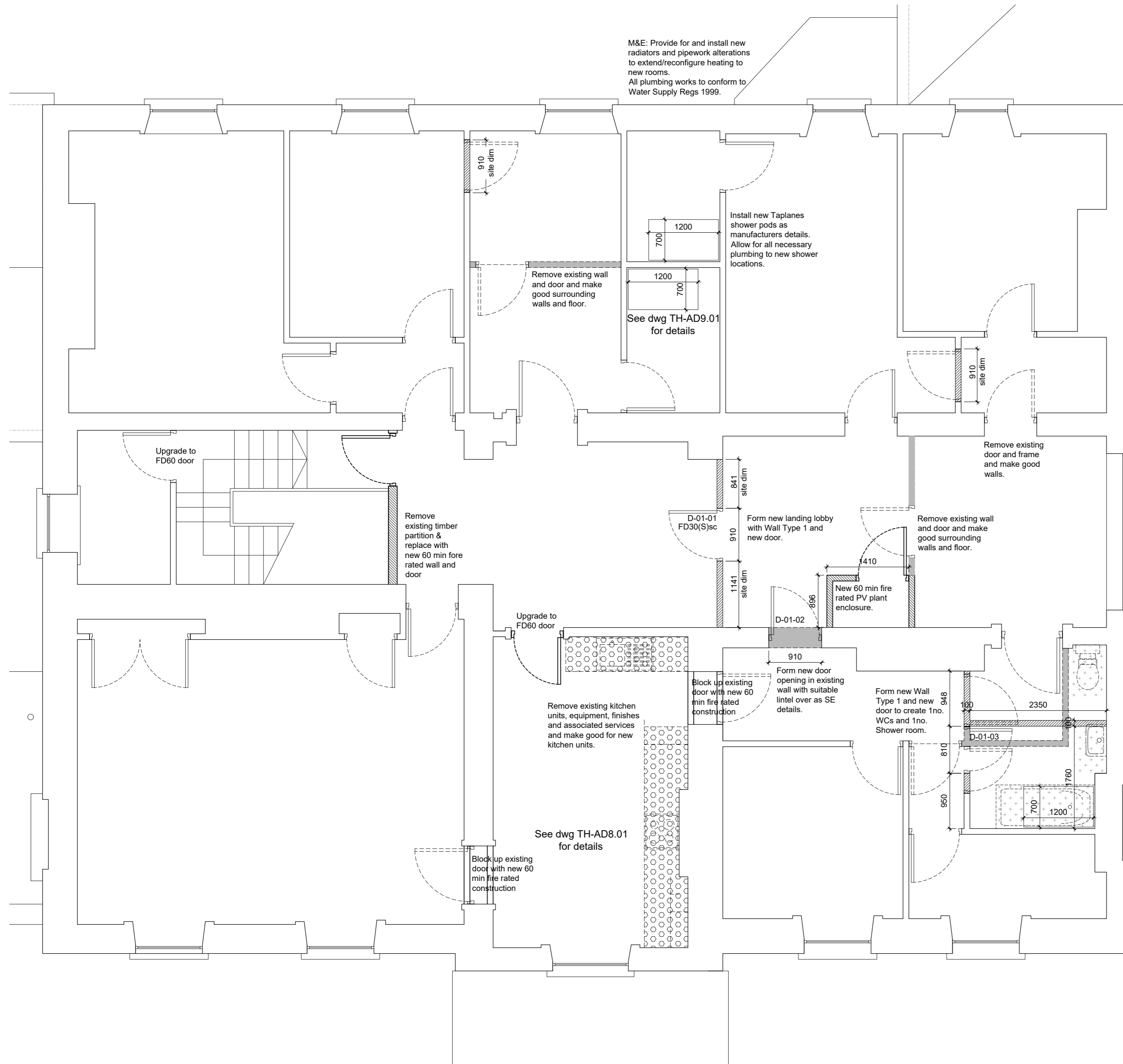


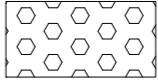


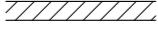

Do not scale off this drawing. All dimensions to be checked on site prior to manufacture and construction. This drawing is the property of Just-H Architects and should not be reproduced without permission. All discrepancies to be brought to the attention of the architect immediately. This drawing to be read in conjunction with the specification / bill of quantities and related drawings.

REVISION			
-	FIRST ISSUE	25.01.22	CT
A	Revised to suit updated existing plans, works by Regenda highlighted in red	05.02.22	RCO
B	Highlighting removed and notation added to Regenda's work for Listed Building application	10.02.22	RCO



M&E: Provide for and install new radiators and pipework alterations to extend/reconfigure heating to new rooms.
All plumbing works to conform to Water Supply Regs 1999.

KEY:

-  **KITCHEN UNITS - REMOVE**
Remove existing kitchen units, finishes, and appliances and make good walls and floors. Services amended to service engineers details.
-  **SANITARYWARE - REMOVE**
Remove existing sanitaryware, finishes, and raised shower sub-floors and make good for new sanitaryware.
-  **WALL, DOORS & WINDOWS**
Demolish, repair, form opening or remove fixture as described.
- NEW WALLS**
 -  Wall Type 1 - 100mm 30min FR stud partition
 -  Wall Type 2 - 150mm 60min FR stud separating wall

NOTES:
All services and drainage alterations amendments to be as M&E engineer's drawings.
For details of Internal Wall Types refer to drawing SFW-AD1.01.
All dims for doors and windows are to structural opening.

Remove existing sanitaryware, finishes and associated services as indicated and make good for new sanitaryware.

M&E: Provide for and install new radiators and pipework alterations to extend/reconfigure heating to new rooms.
All plumbing works to conform to Water Supply Regs 1999.

Install new Taplanes shower pod as manufacturers details.
Allow for all necessary plumbing to new shower locations.

YHA (ENGLAND & WALES) LTD	client
YHA CHESTER TRAFFORD HALL MAIN HOUSE	project
SECOND FLOOR WORKS - DEMS/ALTS/SETTING OUT PLAN	title
YHA 105	job No.
SFW-AL2.01 Rev B	dwg No.
1:50 @ A2	scale
CT	drawn



**Just H
Architects**
46 Manchester Road
Chorlton
Manchester
M21 9PH
0161 237 5500
info@justharchitects.co.uk