

Phase 2 Cambridge Biomedical Campus

1000 Discovery Drive Planning Conditions

February 2022

Sample Panel, Planning Condition 12

B1921-SBA-SW-XX-RP-A-80105-Rev 2

SCOTT
BROWNRIGG⁺



 Cambridge
Biomedical Campus
Innovation and excellence in science and health

1000 DISCOVERY DRIVE

SAMPLE PANEL PLANNING CONDITION

B1921-SBA-SW-XX-RP-A-80105-Sample Panel Planning Condition

This report has been prepared for the sole benefit, use and information of **Cambridge Medipark Ltd** for the purposes set out in the report or instructions commissioning it. This report, together with further reports accompanying this application relate to the present situation and may be subject to supplementary information as discussions progress with the local authority.

Checked
GM

| Revision | Description | Issued by | Date | Checked |
|----------|---------------------------------|-----------|----------|---------|
| 01 | Sample Panel - Rev 1 | JF | 24/02/22 | RM |
| 02 | Additional information provided | RM | 07/03/22 | GM |
| 03 | | | | |
| 04 | | | | |

Approved **Name**

Signature

Date **dd/mm/yy**

© Scott Brownrigg. All right reserved

© Crown Copyright. All right reserved. The OS drawings included in the document are reproduced based on the Ordnance Survey Map with the permission of the Controller of Her Majesty's Stationary Office. Licence No. 100020449. Aerial Photos from Google Earth.

1.0 Planning Condition

Address:

1000 Discovery Drive, Cambridge Biomedical Campus, Dame Mary Archer Way, Cambridge, Cambridgeshire

Client: Cambridge Medipark Ltd

Project Background:

Phase 2 Cambridge Biomedical Campus received planning approval in January 2021, for the erection of a five-storey mixed use laboratory and office building and associated plant, internal roads, car parking, cycle parking, landscaping and public open space.

This document responds to Planning Condition 12, associated with the approval notice (Ref. 20/03950/REM). This condition refers to the materials to be used in the construction of external surfaces of the buildings. This application contains samples, drawings and descriptions of all materials pertinent to the condition.

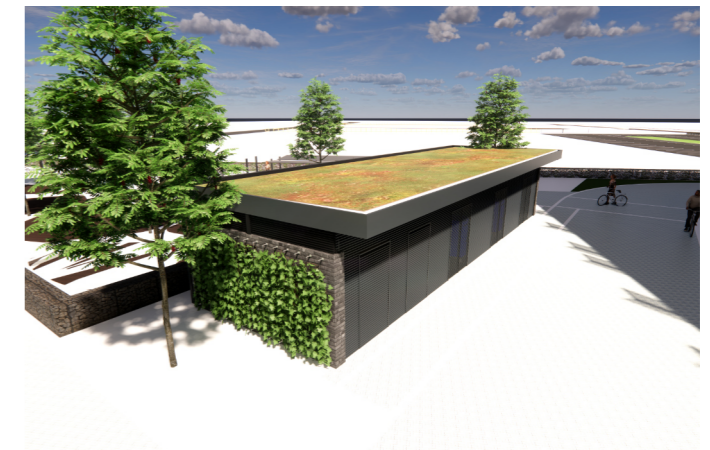
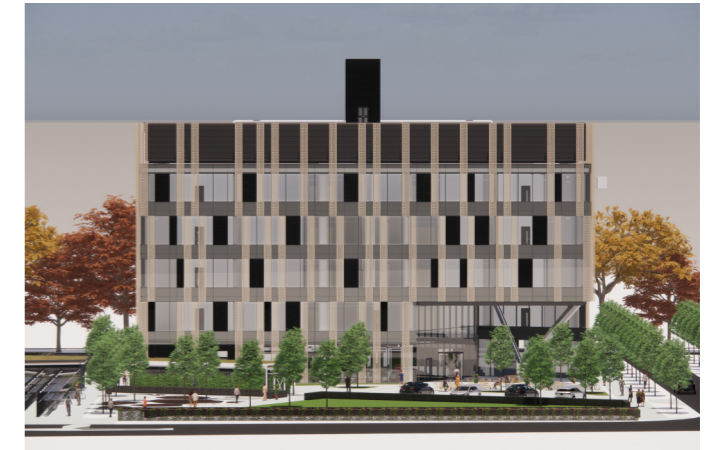
Samples available for viewing at the Marketing Suite, Cambridge Biomedical Campus.

Planning Conditions

12.

No brickwork above ground level shall be laid until a sample panel 1.5 x 1.5m has been prepared on site detailing the choice of brick, bond, coursing, mortar mix, design and pointing technique. The details shall be prepared on site for inspection and approved in writing by the Local Planning Authority. The approved sample panel is to be retained on site for the duration of the works for comparative purposes, and works will take place only in accordance with the approved details.

Reason: To ensure that the external appearance of the development does not detract from the character and appearance of the area (Cambridge Local Plan 2018 policies 55 and 57).



2.0 Sample Panel



Chosen Brick and Mortar

The following brick and mortar design and specification has been chosen as shown on the panel in the highlighted position.

Brick: Wienerberger, Rinko Falls Brick
(Please also refer to data sheet) appended to rear of document.

- Appearance - Textured Creased
- Colour - Grey Multi
- Durability Designation - F2
- Dimensions - 215 X 102.5 X 65mm

Bond: Stretcher

Coursing: 65mm brick with 10mm coursing and perpendicular joints.

Mortar Mix: Cement Gauged mortar type M4,

Mortar Colour: Medium Black.

Pointing Technique: 8mm Raked joint

Mortar Arrangement.

A 1.5 x 1.5m sample panel has been constructed (image above and available at the site marketing suite), which has been used to assess the following mortar pointing and colour options for the specified grey multi brick. These are:

- Top 5 courses Dark Black
- Next 5 courses Medium Black
- Next 5 courses Light Natural
- Bottom 3 Courses Remix Natural

The pointing style has been split right hand side 8mm Raked joint and left hand side flush joint

3.0 Main Building Elevations

 Rinko Falls Brick



South Elevation



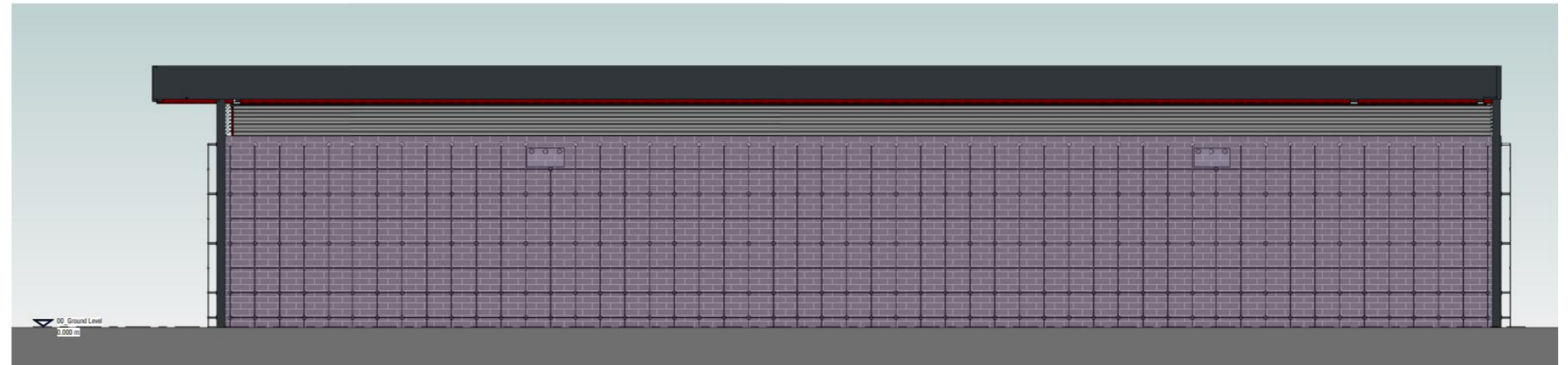
East Elevation



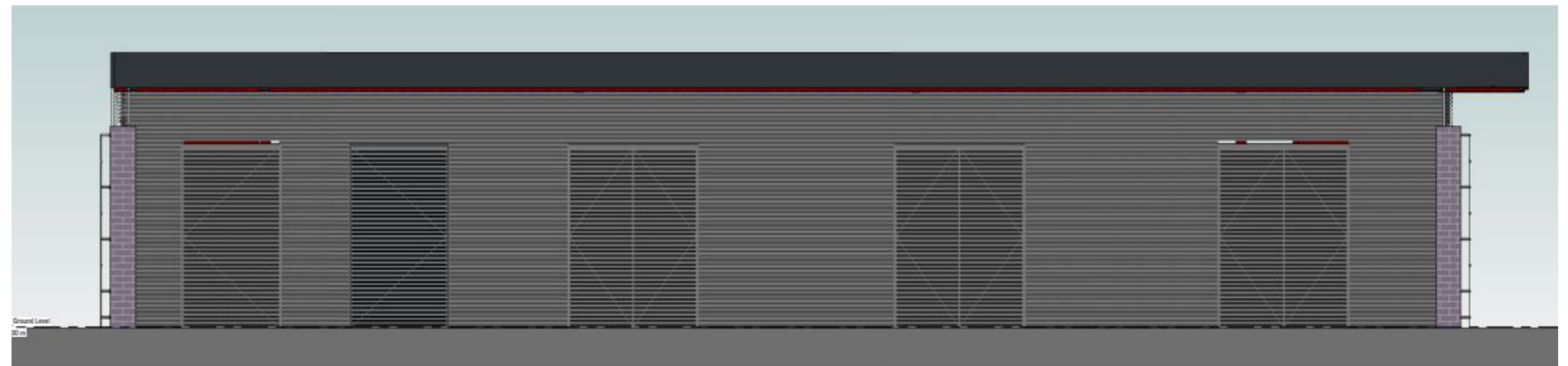
West Elevation

4.0 External Pavilion Elevations

 Rinko Falls Brick



North Elevation



South Elevation



East Elevation

West Elevation

5.0 Cycle Store Elevations



 Rinko Falls Brick



6.0 Information Data Sheet

Rinko Falls

| Product Technical Information Sheet | |
|---|---------------------------------|
| Wienerberger Code | 11487210 |
| Production Plant | De Volharding (The Netherlands) |
| Manufacture | Waterstruck |
| Configuration | Frogged |
| Colour | Grey Multi |
| Appearance | Textured/Creased |
| Work Size (mm) | 215 x 102.5 x 65 |
| Pack Quantity | 632 No. |
| Individual Dry Brick Weight (Kg) | 2.55 |
| Technical Properties to BS EN 771-1 | |
| Size Tolerance (Mean/Range) | T2/R1 |
| Gross Dry Density (kg/m ³ /Tolerance) | 1900 (D1) |
| Compressive Strength (N/mm ²) | ≥15 |
| Thermal Conductivity (W/(m·K)) <small>λ_{10,dry,unit} value (EN 1745 tabulated: S1)</small> | P=90% 0.53 |
| Durability Designation | F2 |
| Water Absorption (%) | ≤8 |
| Initial Rate of Water Absorption (kg/(m ² ·min)) | Min.0.3 Max. 2.0 |
| Active Soluble Salts | S2 |
| Reaction to Fire | Class A1 |
| Issue Date: 15/03/2021 | |
| <small>Technical data correct at time of issue. Individual dry brick weights can vary and are for guidance only. Any questions regarding this data should be referred to the Wienerberger Technical Department. Due to the limitations of screen and print colour representation of product images it is advised that brick samples are viewed prior to ordering.</small> | |

BIM Objects
Download

1000+ products to choose from
 Expert help and advice
 Comprehensive Design Services
 Technical Support

Wall and Landscaping enquiries

0161 491 8200

www.wienerberger.co.uk

