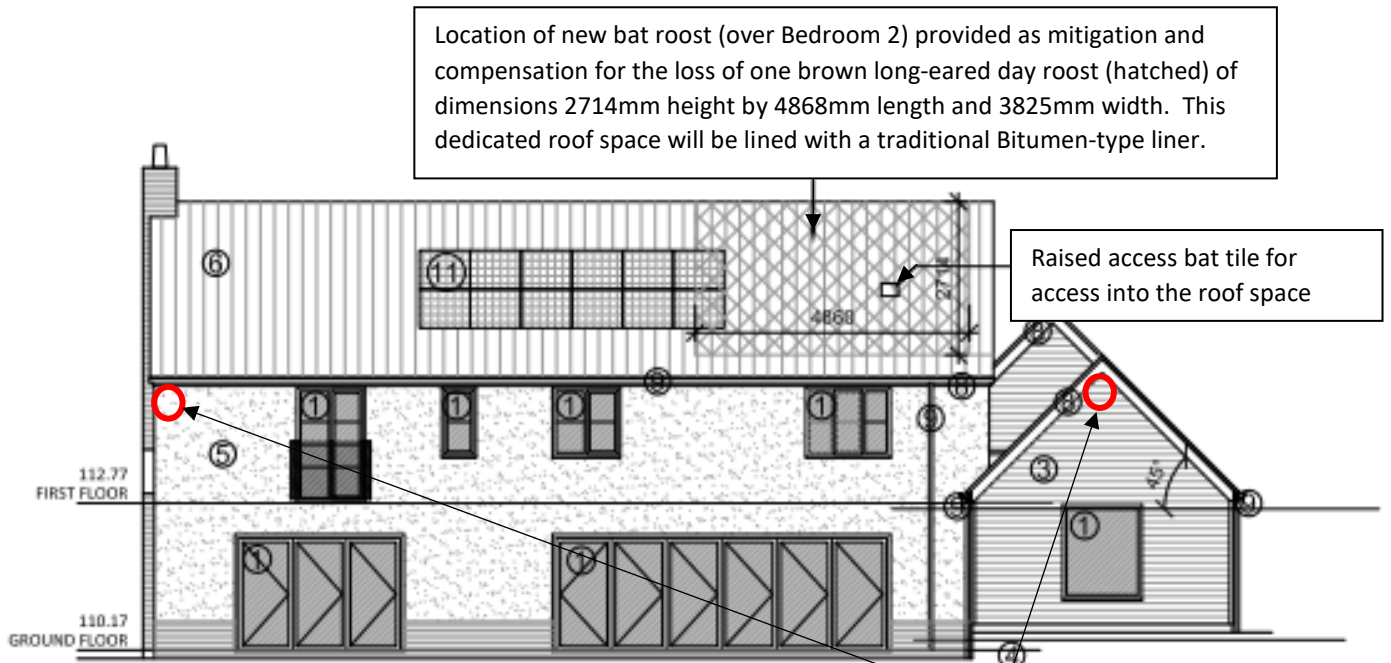


**Figure E3: Goodwood, Specification for Mitigation/Compensation. January 2022.**

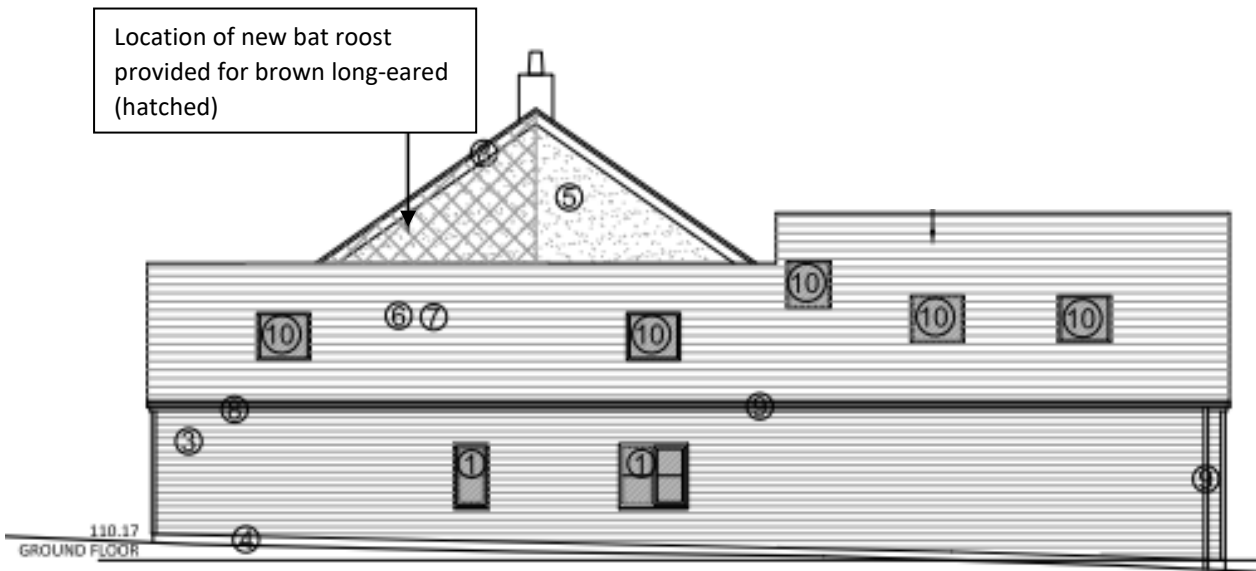


Location of new bat roost (over Bedroom 2) provided as mitigation and compensation for the loss of one brown long-eared day roost (hatched) of dimensions 2714mm height by 4868mm length and 3825mm width. This dedicated roof space will be lined with a traditional Bitumen-type liner.

Raised access bat tile for access into the roof space

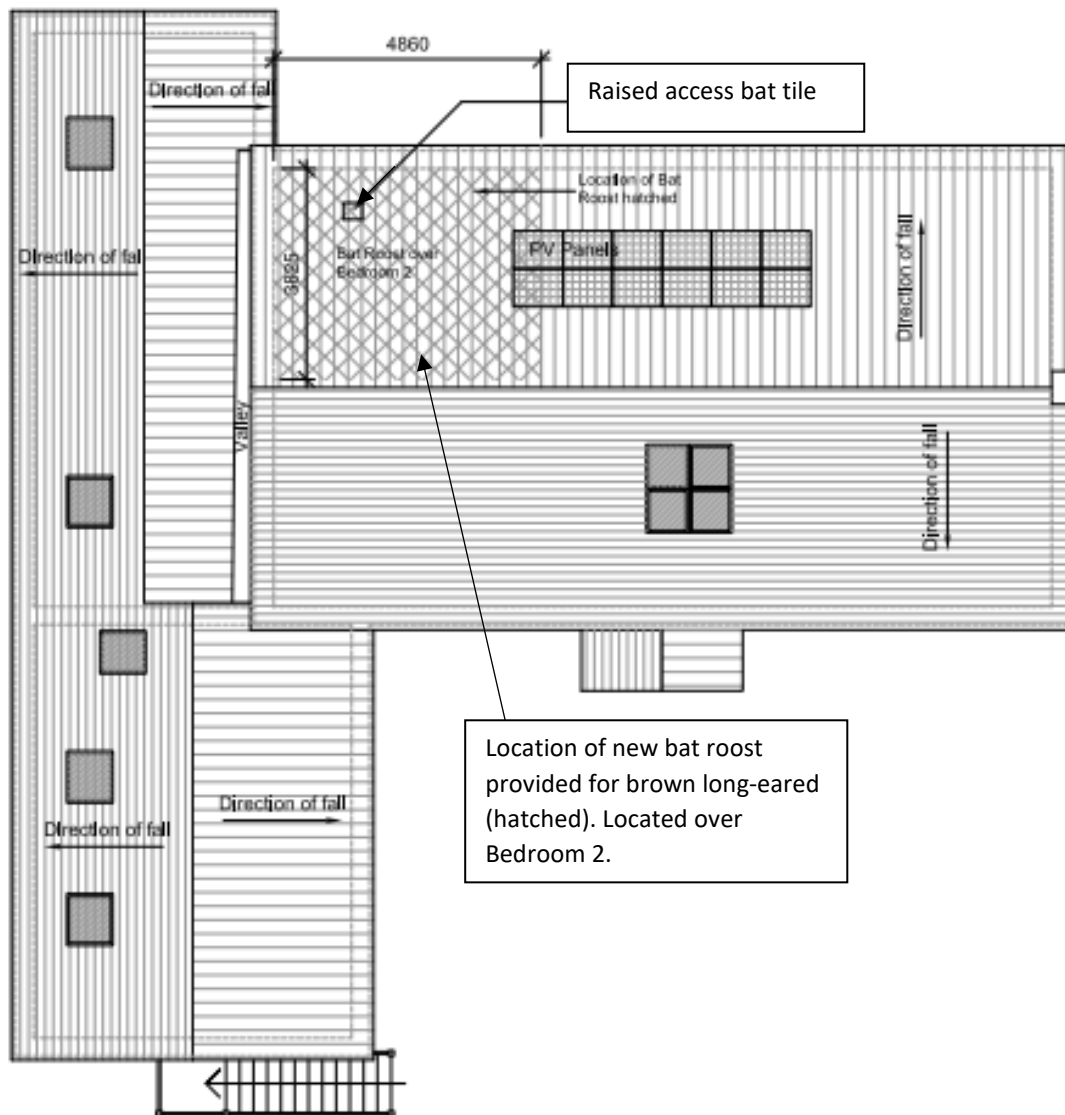
**Proposed South-West elevation - 1:100**

Two built-in bat boxes on the south-west elevation (one on the house and one on the single-storey extension) – Two Vivara Pro Build-In Woodstone Bat Boxes



Location of new bat roost provided for brown long-eared (hatched)

**Proposed South-East elevation - 1:100**



Roof Plan - 1:100