

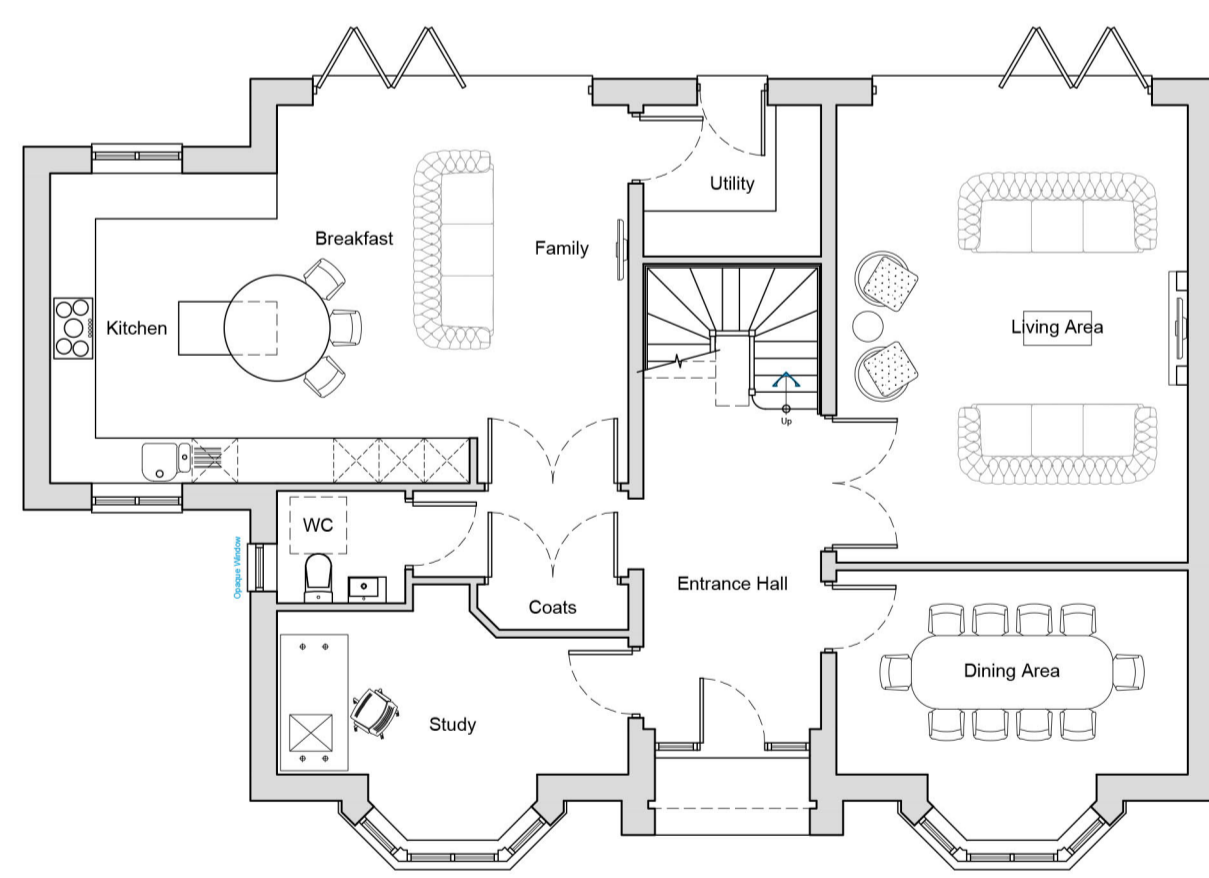
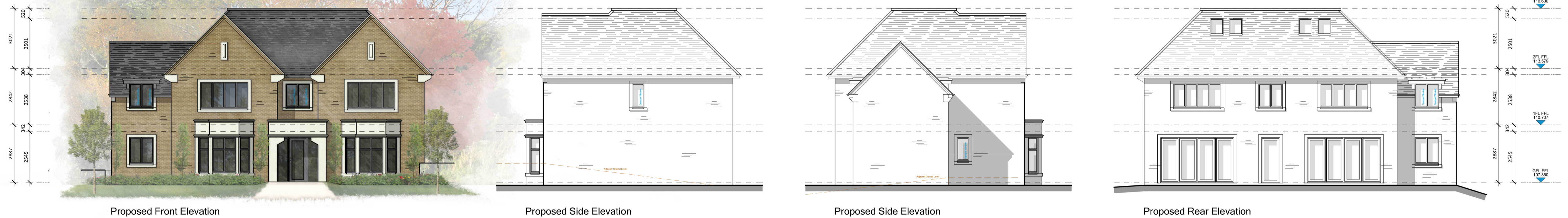
NMSS ON THESE LAYOUTS

Dwelling - 281.7m² (3,032ft²) - 4B7P

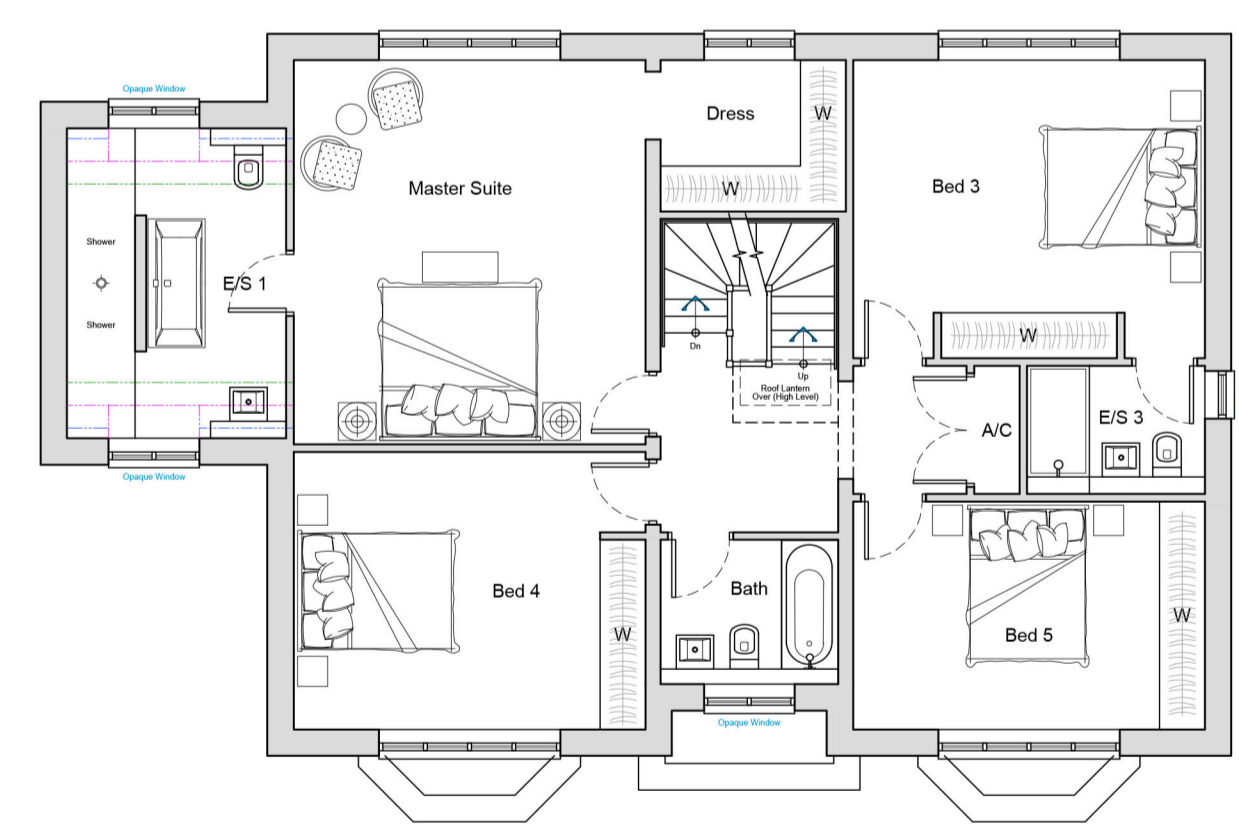
NOTE (NMSS):

- In order to provide one bedspace, a single bedroom has a floor area of at least 7.5m² and is at least 2.15m wide.
- In order to provide two bedspaces, a double (or twin bedroom) has a floor area of at least 11.5m².
- One double (or twin bedroom) is at least 2.75m wide and every other double (or twin) bedroom is at least 2.55m wide.

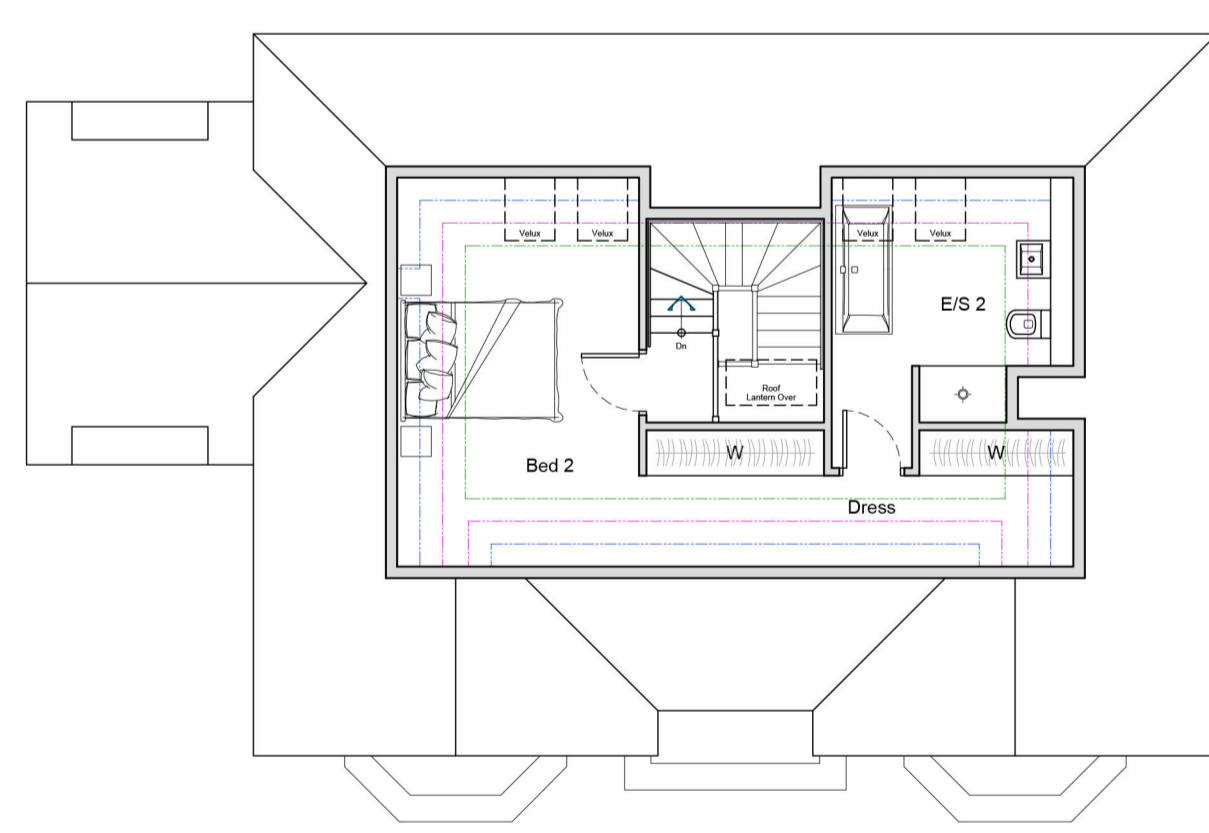
Minimum Required GIA under NMSS (2 storey)
 2B4P (2 Storey) - 79.0m² minimum GIA with 2.0m² built in storage
 3B5P (2 Storey) - 93.0m² minimum GIA with 2.5m² built in storage
 3B6P (2 Storey) - 102.0m² minimum GIA with 2.5m² built in storage



Ground Floor Plan



First Floor Plan



Second Floor Plan

REV.	DATE	REVISIONS	REV.	DATE	REVISIONS	CLIENT:	PROJECT:
						JENNA RACHEL	LAND ADJACENT TO 86 CAMLET WAY, HADLEY WOOD, BARNET, EN4 0NX
						SCALE: 1:100 (A1 ORIGINAL)	DRAWING: PROPOSED FLOOR PLANS & ELEVATIONS
						DRAWN: CdeO	DRAWING NO: 002
						DATE: DEC '21	REVISION: B



© 144 (E) 1344 632814
 20 Architecture Ltd
 Old Boundary House, London Road, Sunningdale, Berkshire, SL5 0DU