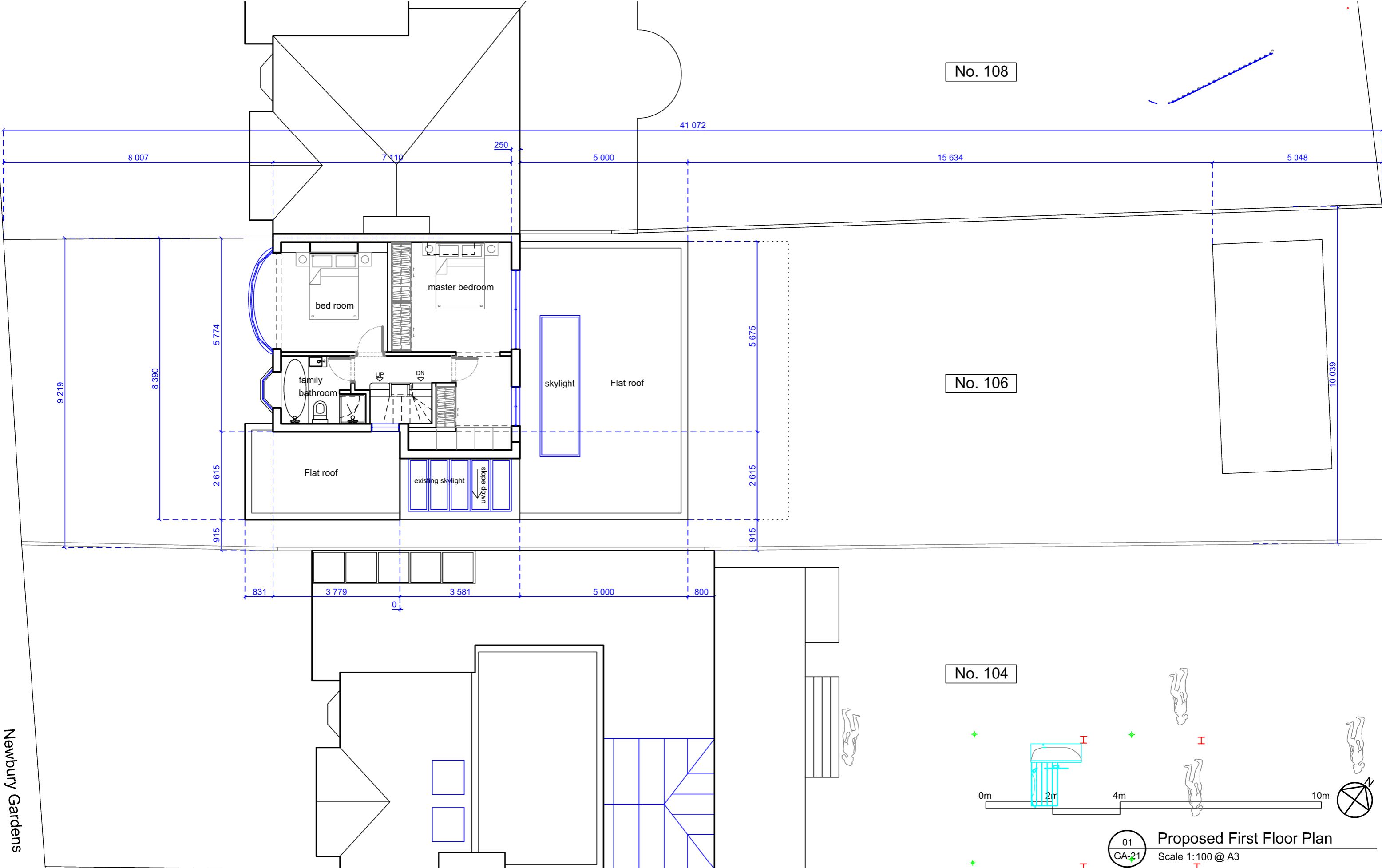


No. 108

No. 106

No. 104

Newbury Gardens



01  
GA-21  
Proposed First Floor Plan  
Scale 1:100 @ A3

SAFETY HEALTH AND ENVIRONMENTAL INFORMATION BOX - See Health and Safety Risk Register In addition to the hazards / risks normally associated with the types of work detailed on this drawing, TAKE NOTE OF THE RISKS BELOW. It is assumed that all works on this drawing will be carried out by a competent contractor working, where appropriate, to an approved method statement.	
Construction Risks	
Maintenance / Cleaning risks	
Demolition Adaptation Risks	

Revision	Date	Description

Drawing Purpose <b>For Planning Approval Purpose</b>		
Drawn by S.Kim	Checked by Young In Oh	Authorised by Young In Oh
Do not scale-off this drawing. Young In Architects take no responsibility for any dimensions obtained by measuring or scaling from this drawing and no reliance may be placed on such dimensions. If no dimension is given, it is the responsibility of the recipient to ascertain the dimension specifically from the Architect or by site measurement. The sizing of all structural and service elements must always be checked against the relevant engineers drawings. No reliance should be placed upon sizing information shown on this drawing.		

Contact  
**Young In Architects**  
Unit 3  
Old Paradise Yard 20, Carlisle Road  
London SE1 7LG  
t: +44 (0) 207 620 3726  
m: +44 (0) 7946 316 687  
e: yoh@younginarchitects.com  
www.younginarchitects.com

Project Name  
Erection of single story rear extension and garage conversion at 106 Newbury Gardens, Epsom, KT19 0PD

Drawing Title © copyright Young In Architects, all rights reserved 2015 <b>21 - Proposed First Floor Plan</b>		
Scale 1:100@ A3	Drawing Number	Project no. - Type - SeriesNumber <b>271_GA_21_PP</b>
Drawing Date Feb. 2022	Revision Date	Revision 0