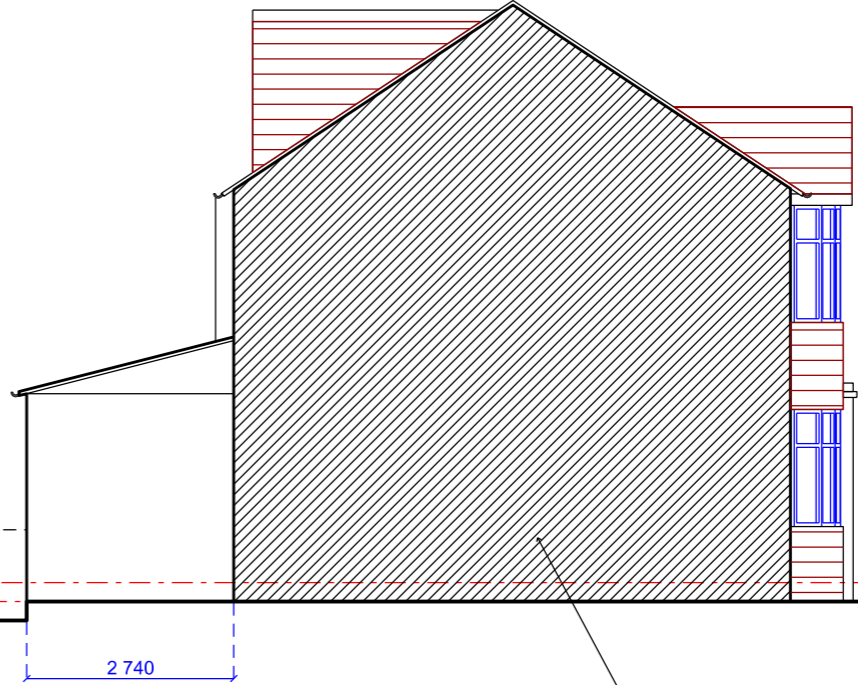
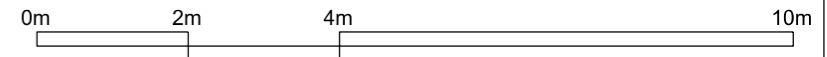


Ground floor level: + 250

Ground Patio level: +0



hatched area indicates adjoining wall



01 Existing Side Elevation-2  
GA-18 Scale 1:100 @ A3

SAFETY HEALTH AND ENVIRONMENTAL INFORMATION BOX - See Health and Safety Risk Register		
In addition to the hazards / risks normally associated with the types of work detailed on this drawing, TAKE NOTE OF THE RISKS BELOW. It is assumed that all works on this drawing will be carried out by a competent contractor working, where appropriate, to an approved method statement.		
Construction Risks	Revision	Date
Maintenance / Cleaning risks		Description
Demolition Adaptation Risks		

Drawing Purpose		
For Planning Approval Purpose		
Drawn by S.KM	Checked by Young In Oh	Authorised by Young In Oh
Do not scale-off this drawing. Young In Architects take no responsibility for any dimensions obtained by measuring or scaling from this drawing and no reliance may be placed on such dimensions. If no dimension is given, it is the responsibility of the recipient to ascertain the dimension specifically from the Architect or by site measurement. The sizing of all structural and service elements must always be checked against the relevant engineers drawings. No reliance should be placed upon sizing information shown on this drawing.		

Contact		
Young In Architects		
Unit 3 Old Paradise Yard 20, Carlisle Road London SE1 7LG		
t: +44 (0) 207 620 3726 m: +44 (0) 7946 316 687 e: yoh@younginarchitects.com www.younginarchitects.com		

Project Name		
Erection of single story rear & side Extension and first floor rear extension at 106 Newbury Gardens, Epsom, KT19 0PD		
Scale 1:100@ A3	Drawing Number	Project no. - Type - SeriesNumber
August, 2021	Revision Date	Revision
		0

Drawing Title		
18 - Existing Side Elevation-2		
© copyright YoungIn Architects, all rights reserved 2015		