

Soft landscape specification:

1. Implementation Plan:

It is recommended that planting does not take place prior to mid-late Spring (April-May). Planting to commence on completion of hard and soft landscaping when the property has been occupied.

2. Planting Plan and Written Specification:

All planting stock should be established nursery potted, be healthy and strong with a good shape and strong root system. All plants should be dug in at a size in excess of the pots to allow the roots to spread out at their natural depth as they existed in the nursery and planted in good quality imported top soil with sufficient organic matter, bone meal and fertilisers where required and watered in with 75mm of medium grade bark mulch. Once all hard landscaping works have been carried out calculations for the required top soil can be made.

3. Plant schedule:

1. Pittosporum tenuifolium 'Tom Thumb', 7.5L pot size, 0.5 -1m plant size, 6No.
2. Fatsia Japonica 7.5L pot size, 0.5 -1m plant size, 6No.
3. Euonymus Fortunei 'Emerald 'n' Gold', 7.5L pot size, 0.5 -1m plant size, 6No.

4. Maintenance:

All plants are to be maintained until established and clipped to required heights and densities. All weed growth to be removed and the beds kept clean. Allow for watering for the first two years to ensure establishment. Top up mulch to a depth of 75mm annually.

5. Replacement Planting:

Replace any plant within a five year period that fails to thrive or is below specification.

Hedgehog House

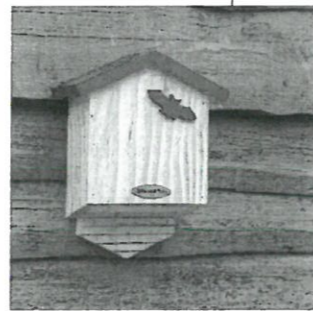
POSITIONING YOUR HEDGEHOG HOUSE

Place the house in a quiet part of the garden, preferably against a bank, wall or fence. Make sure that the entrance to the house does not face North or North East, thus avoiding the cold winter winds. Measures H33cm x W40cm x D30cm (13in x 15.75in x 11.75in) with an access tunnel

**NATIONAL TRUST
ARUNDEL BAT BOX**
Width 25cm
Length 11cm
Height 23cm

BEE BOX SPECIFICATION
(not to scale)

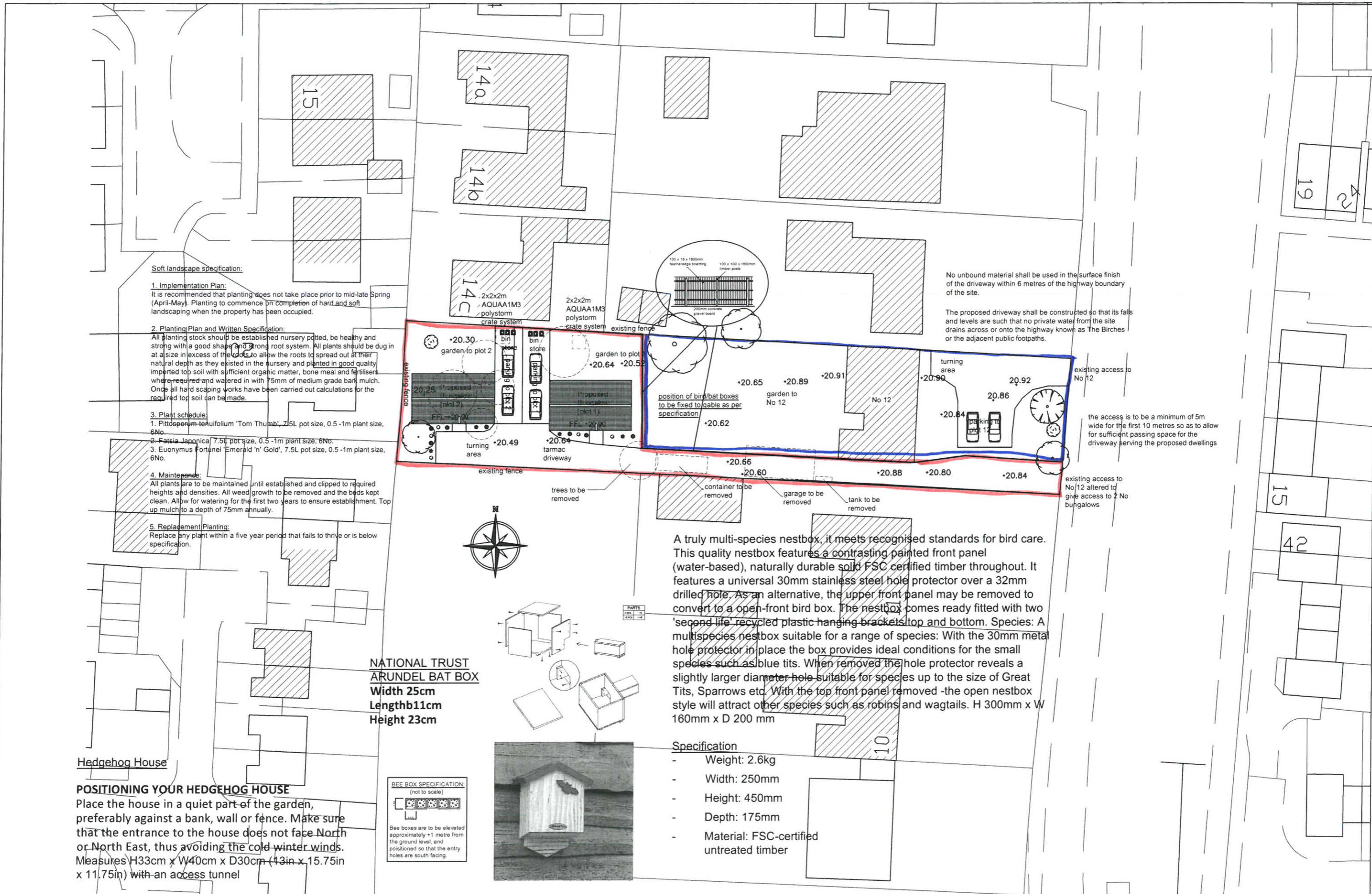
See boxes are to be elevated approximately +1 metre from the ground level, and positioned so that the entry holes are south facing.



A truly multi-species nestbox, it meets recognised standards for bird care. This quality nestbox features a contrasting painted front panel (water-based), naturally durable solid FSC certified timber throughout. It features a universal 30mm stainless steel hole protector over a 32mm drilled hole. As an alternative, the upper front panel may be removed to convert to an open-front bird box. The nestbox comes ready fitted with two 'second life' recycled plastic hanging brackets top and bottom. Species: A multispecies nestbox suitable for a range of species: With the 30mm metal hole protector in place the box provides ideal conditions for the small species such as blue tits. When removed the hole protector reveals a slightly larger diameter hole suitable for species up to the size of Great Tits, Sparrows etc. With the top front panel removed -the open nestbox style will attract other species such as robins and wagtails. H 300mm x W 160mm x D 200 mm

Specification

- Weight: 2.6kg
- Width: 250mm
- Height: 450mm
- Depth: 175mm
- Material: FSC-certified untreated timber



No unbound material shall be used in the surface finish of the driveway within 6 metres of the highway boundary of the site.

The proposed driveway shall be constructed so that its falls and levels are such that no private water from the site drains across or onto the highway known as The Birches or the adjacent public footpaths.

the access is to be a minimum of 5m wide for the first 10 metres so as to allow for sufficient passing space for the driveway serving the proposed dwellings

existing access to No 12 altered to give access to 2 No bungalows

Contract :
PROPOSED BUNGALOWS TO THE
REAR OF 12, WARREN ROAD, RED
LODGE, SUFFOLK.

Title :
SITE PLAN

These drawings are the
COPYRIGHT of Greg
Saberton Design.
Unauthorised
copying is not permitted.

Revisions :
-

Scale : 1 : 500
Date : DEC 2021
Drawing Number : 02 / 2778 / 21

GREG SABERTON DESIGN
ARCHITECTURAL DESIGN CONSULTANCY
Tom's Hole Barn, Branch Bank, Prickwillow, Ely, Cambridgeshire, CB7 4UR
Tel/Fax : 01353 687999
Email : greg@gregsabertondesign.co.uk