

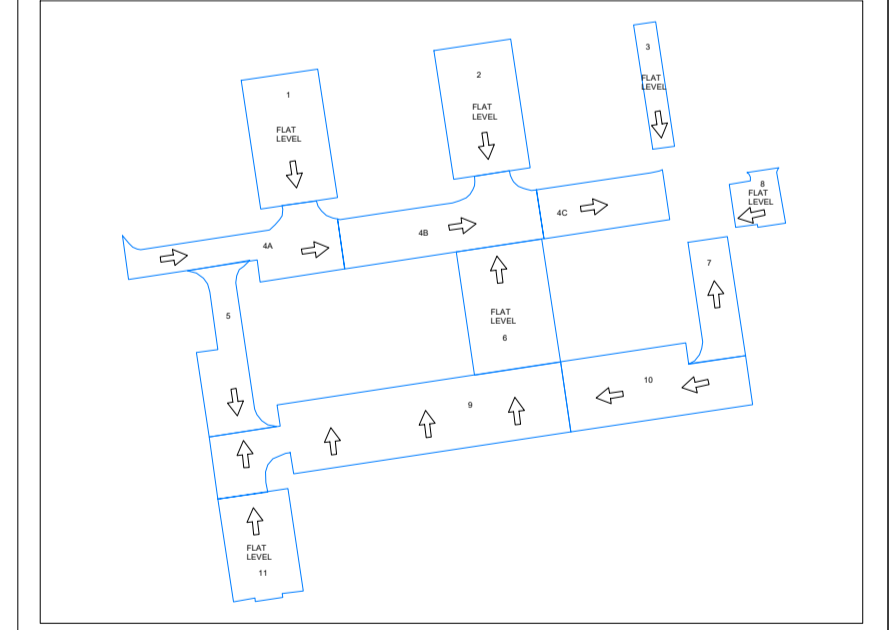


Legend

- RE Rodding Eye
- RWP
- WASP prefab chamber Ø1200
- VFC WASP prefab chamber with vortex flow control Ø1200 - 5 l/s restriction
- Pipework Ø150
- Inlet - PVOD Diffuser & WASP filter chamber for c.100m² catchment
- Inlet - PVOD Diffuser & WASP filter chamber for multiple 100m² catchment
- Outlet - Controflow SUDS02008 with diffuser, max. 3 l/s
- Outlet - Checkdam with collection and integral flow control
- Checkdam membrane only
- Voided sub-base attenuation layer minimum 1m deep, with impermeable membrane / protection fleece to base and sides
- Direction of surface flow

Attenuation

Reference	Type	Area (m ²)	Storage (m ³)
1	Voided Sub-base	487	143
2	Voided Sub-base	487	143
3	Voided Sub-base	134	40
4a	Voided Sub-base	432	128
4b	Voided Sub-base	529	157
4c	Voided Sub-base	304	91
5	Voided Sub-base	327	87
6	Voided Sub-base	430	156
7	Voided Sub-base	237	78
8	Voided Sub-base	120	44
9	Voided Sub-base	1162	404
10	Voided Sub-base	571	207
11	Voided Sub-base	358	130



Sel Environmental Ltd
Real Innovation
SEL Environmental Ltd
Canal House
Bonsall Street
Blackburn
BB2 4DD
Tel: 01254 589987
www.selel.co.uk

Project: Bristol Road, Blackpool
Drawing Title: Surfacewater Layout
Client: PSA Design
Status: For Review

Rev	Date	Description	By	Chk

Scale	NTS	Paper Size	TBC
Drawing Number	TBC		