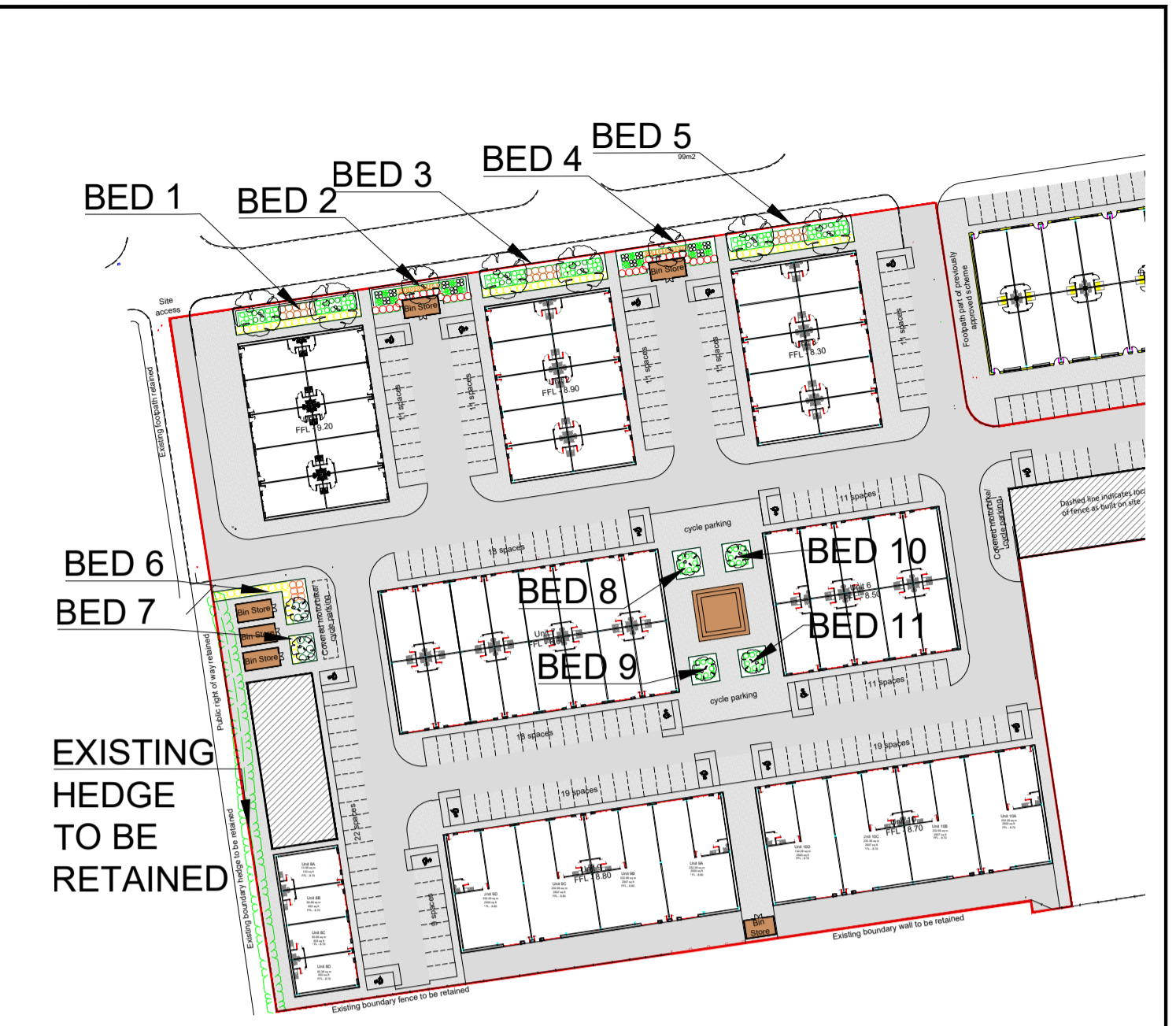


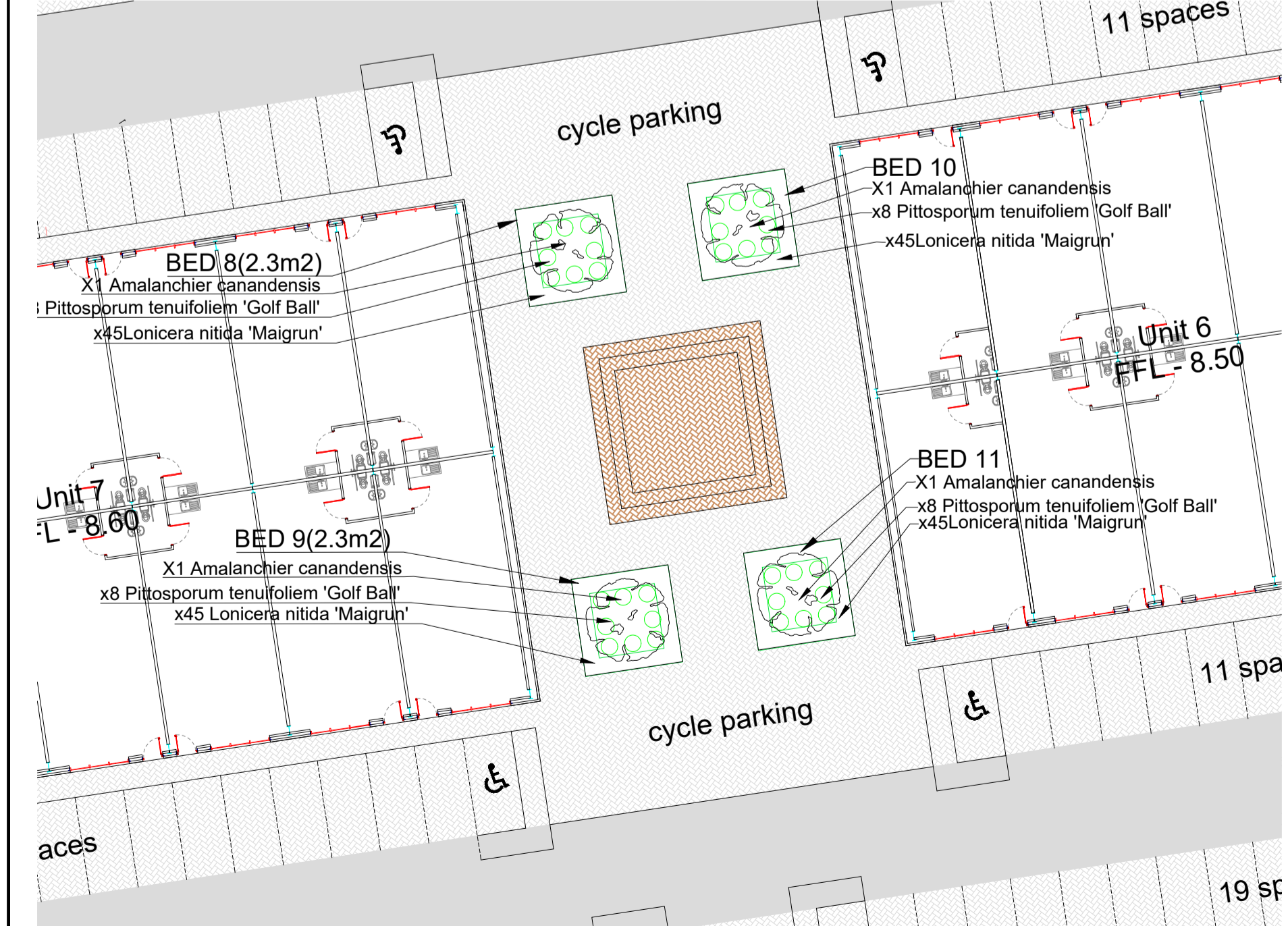
PLANTING BEDS 1 TO 5



SITE PLAN SHOWING PLANTING AREAS



PLANTING BEDS 6 TO 7



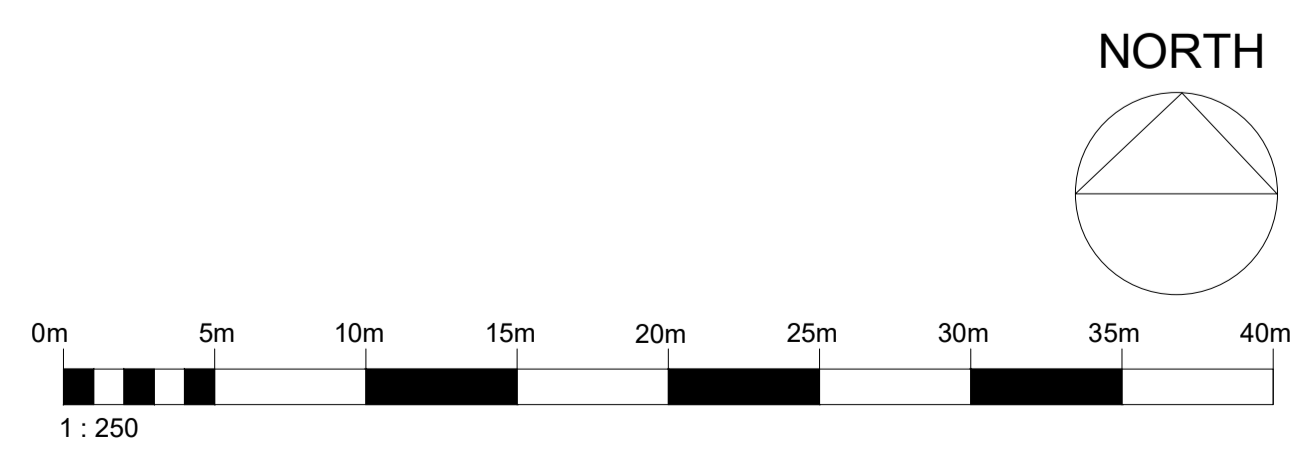
PLANTING BEDS 8 TO 11

PROPOSED B1,B2 & B8 UNITS BRISTOL AVENUE, BLACKPOOL

Proposed Planting schedule

Container/Size	Density Spacing per m2	BED 1	BED 2	BED 3	BED 4	BED 5	BED 6	BED 7	BED 8	BED 9	BED 10	BED 11	TOTAL	NOTES
TREES 10 Litre														
Acer campestre 'Elsrijk'	12-14cm girth 2m clear stem Container or Rootball 4-5m high							1	1				2	
Acer platanoides 'Crimson King'	12-14cm girth 2m clear stem Container or Rootball 4-5m high		2		2								4	
Amalanchier canadensis	Multi-stem 3- 4.5m high Container or Rootball 4-5m							1	1	1	1		4	
Carpinus betulus	12-14cm girth 2m clear stem Container or Rootball 4-5m		2		2	2							6	
SHRUBS 10 Litre														
Berberis thunbergii f. atropurpurea 'Nana'	5L C		24		24								48	NB: Refer to planting plan for location of plants
Choisy ternata	10L C						6	8					14	
Cornus sanguinea 'Mid Winter Fire'	10L C	10		10		10							30	
Euonymus fortunei 'Emerald and gold'	10L C		14		14								28	
Eleagnus ebbingei 'Limelight'	10L C	18		18		18	16	4					74	Hedge maintained at 1.5m high
Hypericum x hidcotense 'Hidcote'	10L C							6					6	
Lonicera nitida 'Maigrun'	5L C	78		78		78		45	45	45	45		414	Low Hedge .5m high
Pittosporum tenuifolium 'Golf Ball'	10L C							8	8	8	8		32	
Phormium tenax 'Pink Panther'	10L C		6		6								12	
Photinia x fraseri 'Red Robin'	10L C		16		16								32	Hedge maintained at 1.5m high
Prunus 'Otto Lyken'	10L C	20		20		20							60	Maintained 1m high
Skimmia japonica 'Rubella'	10L C	8		8		8							24	

PLANTING SCHEDULE



CONSULTANT: LAKELAND GARDEN DESIGN

Project: PROPOSED B1,B2 & B8 UNITS BRISTOL AVENUE, BLACKPOOL Client: Trustees of the Wheeler Plan

Title: LANDSCAPE PLAN ISSUE FOR PLANNING

Drawn: KF Approved: KF

Checked: KF Date: 17.01.22 Scale: 1:250@ A1

Job No: LGD34 Orig No: LGD34_01_01 Rev: