
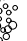
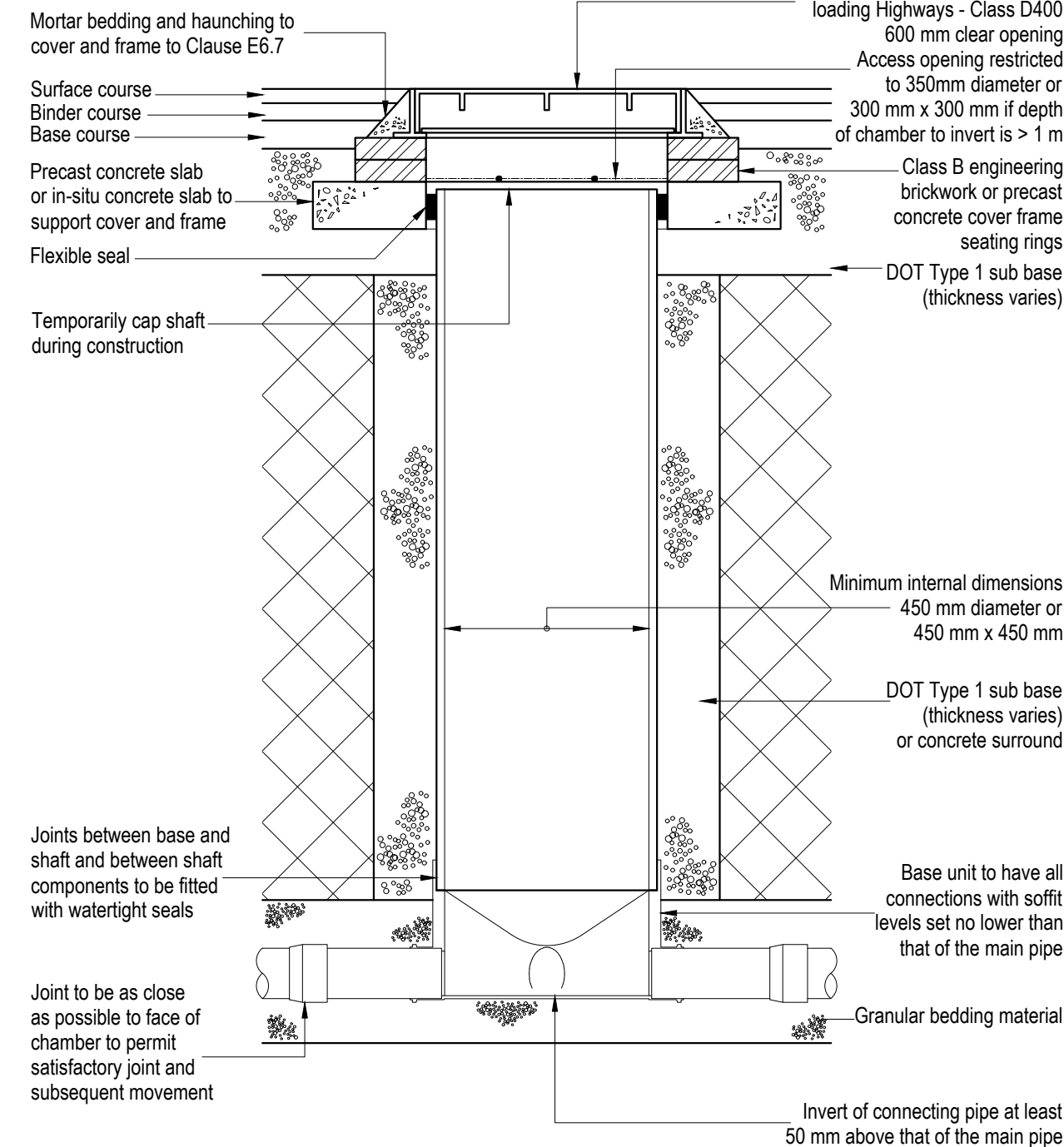


**Inspection Chamber - (LV)**  
(suitable for light vehicle loading)  
Alternate top detail

Manhole cover to suit BS EN 124  
loading Highways - Class D400  
600 mm clear opening  
Access opening restricted  
to 350mm diameter or  
300 mm x 300 mm if depth  
of chamber to invert is > 1 m

 Class B engineering  
brickwork or precast  
concrete cover frame  
seating rings

 DOT Type 1 sub base  
(thickness varies)



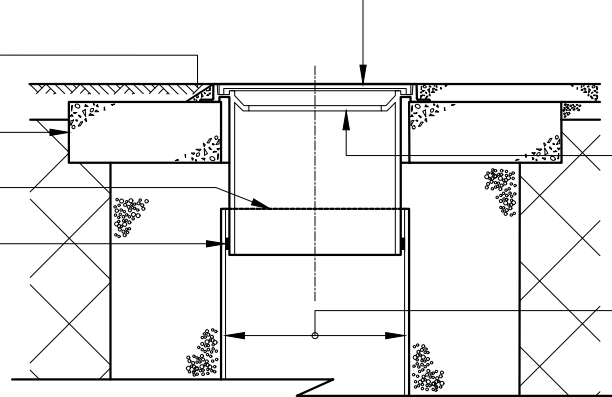
**Inspection Chamber - (LV)**  
(suitable for light vehicle loading)  
Alternate top detail

Mortar bedding and haunching  
to cover and frame \_\_\_\_\_  
to Clause E6.7

150 mm deep concrete collar—

Temporarily cap shaft \_\_\_\_\_  
during construction

Flexible seal \_\_\_\_\_



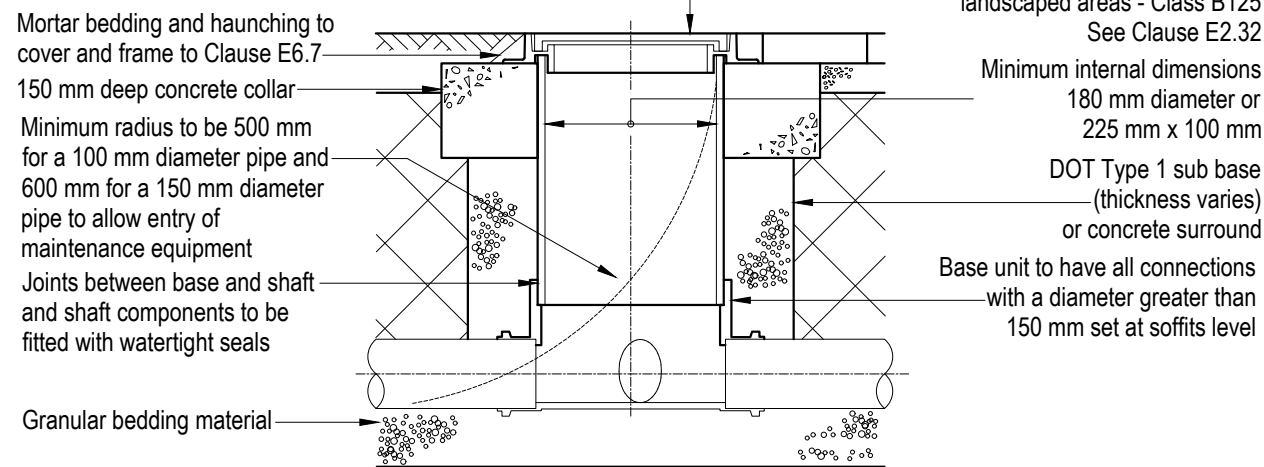
Cover complying with  
BS EN 124 and BS 7903  
Driveways, footways and  
landscaped areas - Class B125  
See Clause E2.32

Access opening restricted  
to 350 mm diameter or  
300 mm x 300 mm if depth  
of chamber to invert is > 1 m

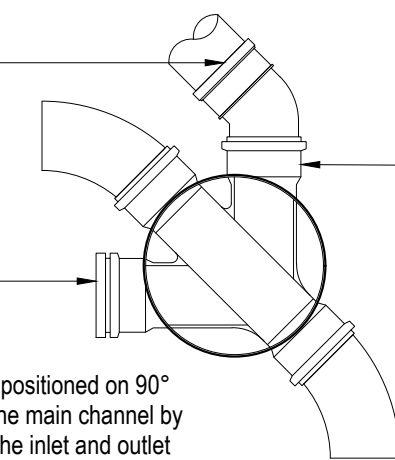
Minimum internal dimensions  
450 mm diameter or  
450 mm x 450 mm

**300 Ø Inspection Chamber**  
(suitable for light vehicle loading)

Cover complying with  
BS EN 124 and BS 7903  
Driveways, footways and  
landscaped areas - Class B125  
See Clause E2.32



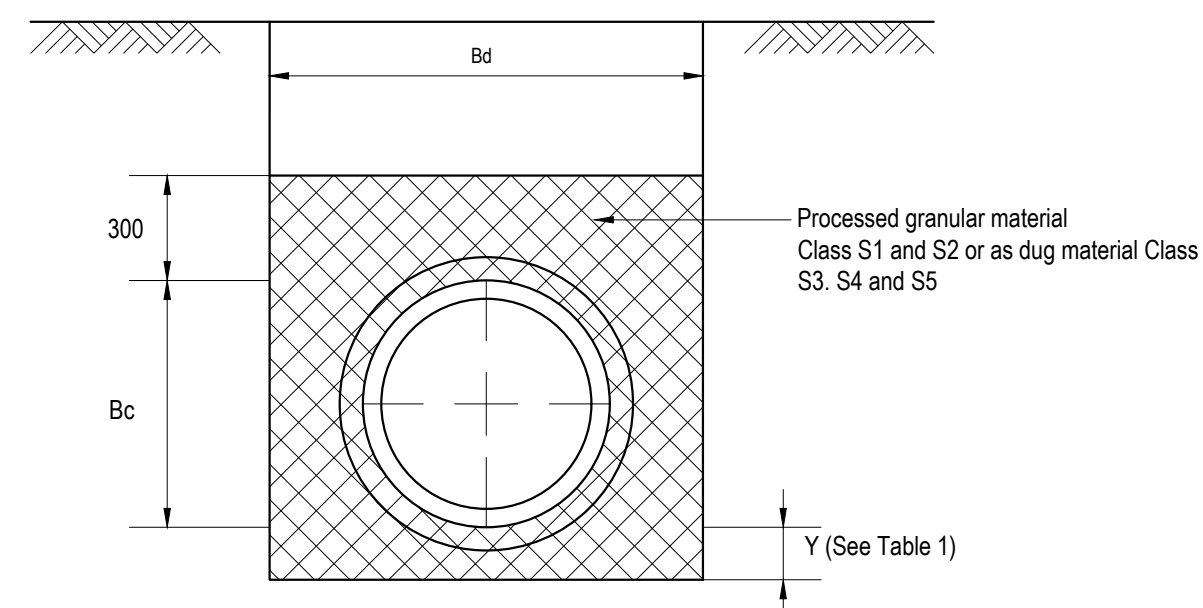
Flexible inlet/outlet  
and/or bend \_\_\_\_\_  
(maximum angle 45°)



Joint to be as close as possible  
to face of chamber to permit  
satisfactory joint and  
subsequent movement

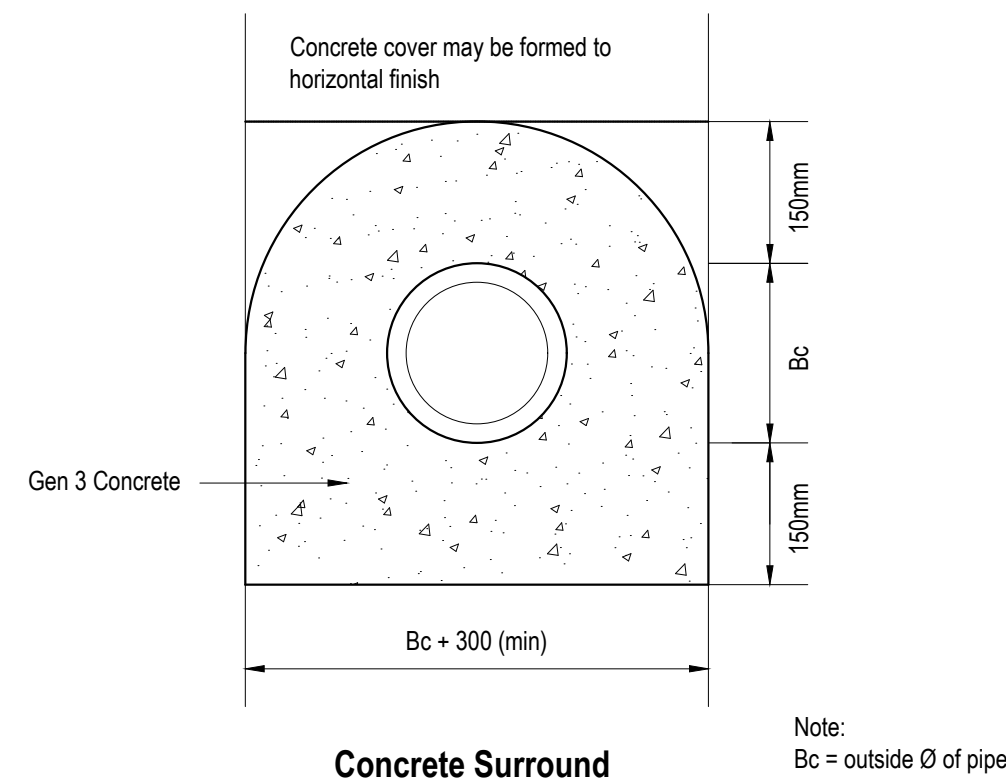
Where chambers are positioned on 90° corners, always use the main channel by fitting a 45° bend on the inlet and outlet

### Typical Inspection Chamber Details



Nominal Int Pipe Dia	(Even trench bottom)	Dimension Y2 (Rock or uneven trench bottom)	Minimum Effective Trench Width Bd (see note 2)
<400	100	200	Bc+300
400-700	150	250	Bc+450
725-900	200	300	Bc+600
925-1200	250	350	Bc+800

\*Note:  
The minimum depth of processed granular material under pipe sockets shall be 50mm for even trench bottom and 150mm for uneven trench bottom.



### Drainage Pipe Embedment Details

## Typical Manhole Detail

Refer to drawing D2972-D-01 for layout and notes

P1	22/02/22	Preliminary for Comment	GS	DLW	GS
REV	DATE	AMENDMENT DETAILS	DRAWN	CHECKED	APPROVED
<div style="text-align: center;"> <h2>J Waring &amp; Sons Ltd</h2> </div>					
<div style="text-align: center;"> <h3>Bristol Avenue - Blackpool</h3> <h3>Proposed Foul &amp; Surface Water Drainage</h3> </div>			Drwg No. <b>D2972-D-02</b>		Rev. <b>P1</b>
			Scale <b>As Shown</b>		Sheet Size <b>A1</b>
			<div> <b>PSA Design Ltd</b>              The Old Bank House, 6 Berry Lane,              Longridge, Preston, PR3 3JA              Tel. 01772 786066  <a href="http://www.psadesign.co.uk">www.psadesign.co.uk</a>  <a href="mailto:mail@psadesign.co.uk">mail@psadesign.co.uk</a> </div>		
			Date <b>22-02-2022</b>		
			Drawn <b>GS</b>	Checked	Approved