



Partner Number:
P33914

Title:
Kennedy Street Aug 21

Partner Name:
Jay Javid

Drg by:
G Housley

Full Address:
214 Kennedy Street
Glasgow
G4 0DB

Drawing Ref:
NisaKennedy_001

Date:
10.08/21

SDM Name:
John Roberts

Visual Status:
For review

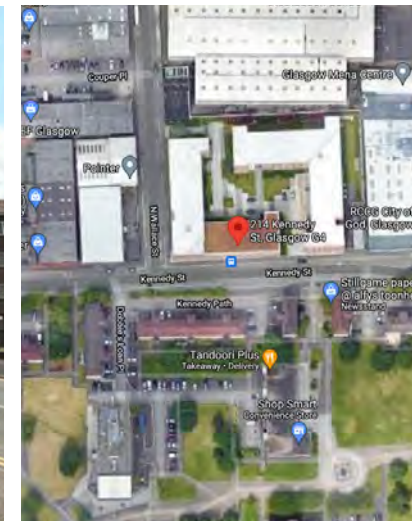
Amendments

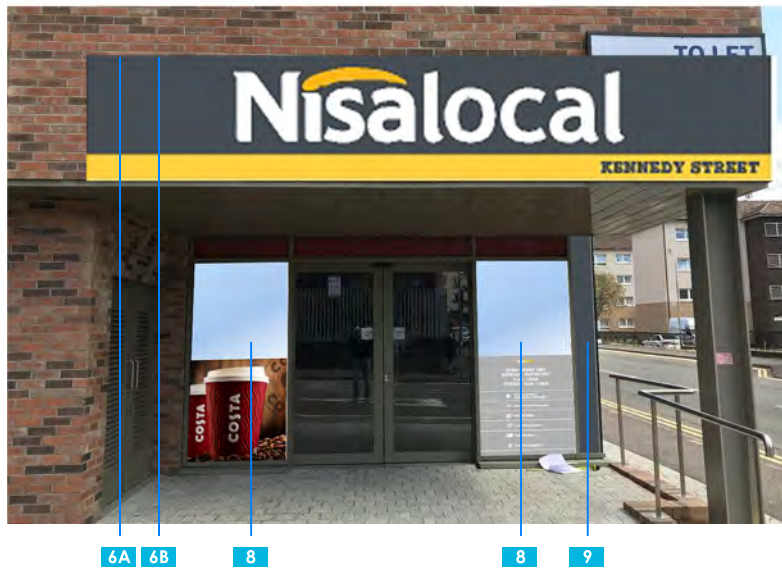
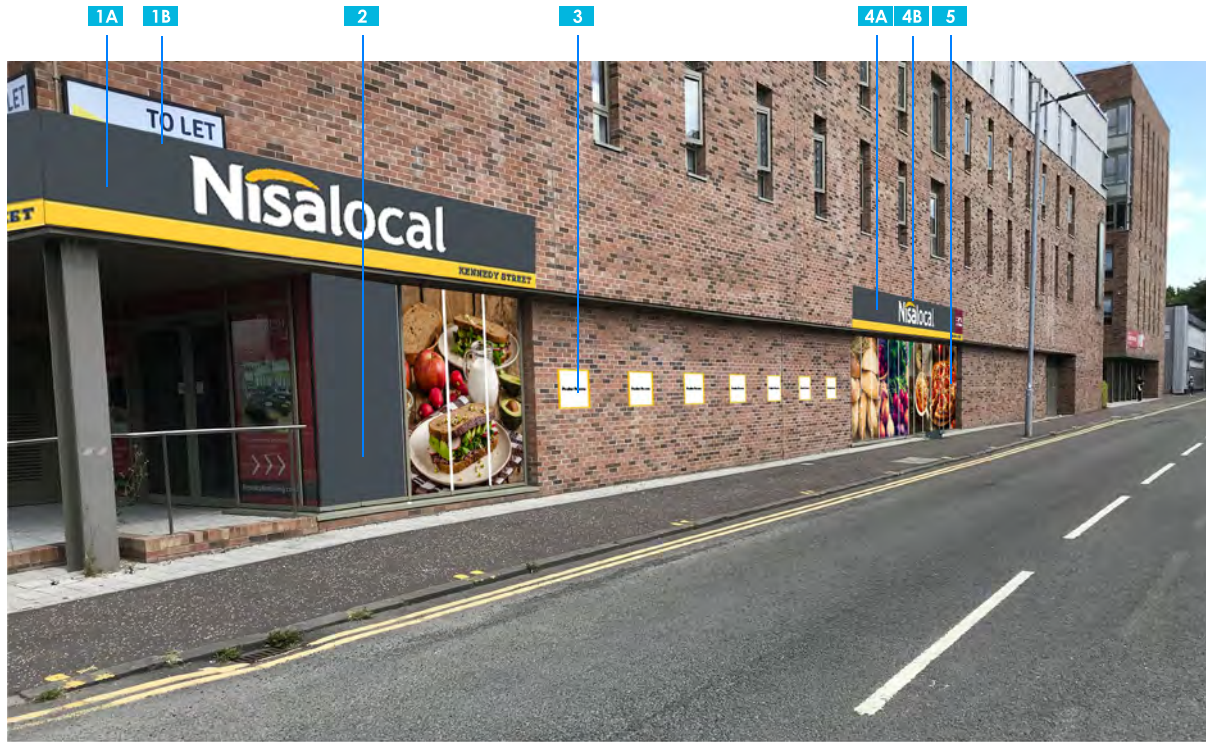
Rev A XXX

Disclaimer - Please Read

It is the responsibility of the partner to ensure that the contents within this document are proof read and checked. That spelling, grammar and all artwork layouts are as discussed and agreed before final sign.

If any changes to the content of this document is required after the order has been placed the partner is responsible for any costs that have been incurred/unwanted items. There will be additional costs for re-printing, manufacturing and installation of the amended/additional requirements.





6A Fascia Sign

Folded aluminium fascia sign, powder coated RAL 7024 grey
 Built up shoulder cut lettering, 80mm returns
 Lettering - powder coated white 9010, inside and out.
 Swoosh - powder coated yellow 1023 outside, white 9010 inside
 Clear polycarb backplates, opal acrylic faces
 Printed grey, matt lam, vinyl applied to panel behind built ups - 5mm outline
 Stand offs to be half height, 15mm
 Internally illuminated with white LED for face and halo illumination
 Yellow translucent vinyl applied to swoosh element
 Printed yellow vinyl bars, PMS 123c applied to panel, glass lam.

6B Trough light

LED Trough light installed above fascia
 Powder coated RAL 7024



1A Fascia Sign

Folded aluminium fascia sign, powder coated RAL 7024 grey
 Built up shoulder cut lettering, 80mm returns
 Lettering - powder coated white 9010, inside and out.
 Swoosh - powder coated yellow 1023 outside, white 9010 inside
 Clear polycarb backplates, opal acrylic faces
 Printed grey, matt lam, vinyl applied to panel behind built ups - 5mm outline
 Stand offs to be half height, 15mm
 Internally illuminated with white LED for face and halo illumination
 Yellow translucent vinyl applied to swoosh element
 Printed yellow vinyl bars, PMS 123c applied to panel, glass lam.

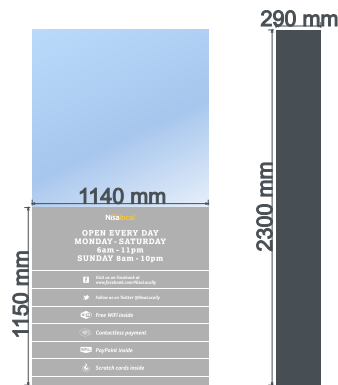
1B Trough light

LED Trough light installed above fascia
 Powder coated RAL 7024



7 Window Graphics

Print on polymeric
 Matt lamination
 Externally applied



8 Service Menu

Print on frosting
 Matt lamination
 Externally applied
 White spot required

9 Window Graphics

Print on polymeric
 Matt lamination
 Externally applied



2 Window Graphics

Print on polymeric
 Matt lamination
 Externally applied



3 Poster Frames

7no. A2 Poster frames

4A Fascia Sign

Folded aluminium fascia sign, powder coated RAL 7024 grey
 Built up shoulder cut lettering, 80mm returns
 Lettering - powder coated white 9010, inside and out.
 Swoosh - powder coated yellow 1023 outside, white 9010 inside
 Clear polycarb backplates, opal acrylic faces
 Printed grey, matt lam, vinyl applied to panel behind built ups - 5mm outline
 Stand offs to be half height, 15mm
 Internally illuminated with white LED for face and halo illumination
 Yellow translucent vinyl applied to swoosh element
 Printed yellow vinyl bars, PMS 123c applied to panel, gloss lam.
 Costa logo - printed vinyl applied to panel, gloss lam.

4B Trough light

LED Trough light installed above fascia
 Powderder coated RAL 7024

Side Elevation LHS



5 Window Graphics

Print on polymeric
 Matt lamination
 Externally applied

Client: P33914

Drg: NisaKennedy_001

Drg by: G Housley

Location: 214 Kennedy St, G4 0DB

Rev: 1

Date: 10.05.21

Partner approval: Signature

Partner Name (Printed)

Date:



8 Service Menu

Print on frosting
 Matt lamination
 Externally applied
 White spot required