

These are the notes referred to on the following official copy

The electronic official copy of the title plan follows this message.

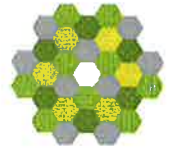
Please note that this is the only official copy we will issue. We will not issue a paper official copy.

This official copy was delivered electronically and when printed will not be to scale. You can obtain a paper official copy by ordering one from HM Land Registry.

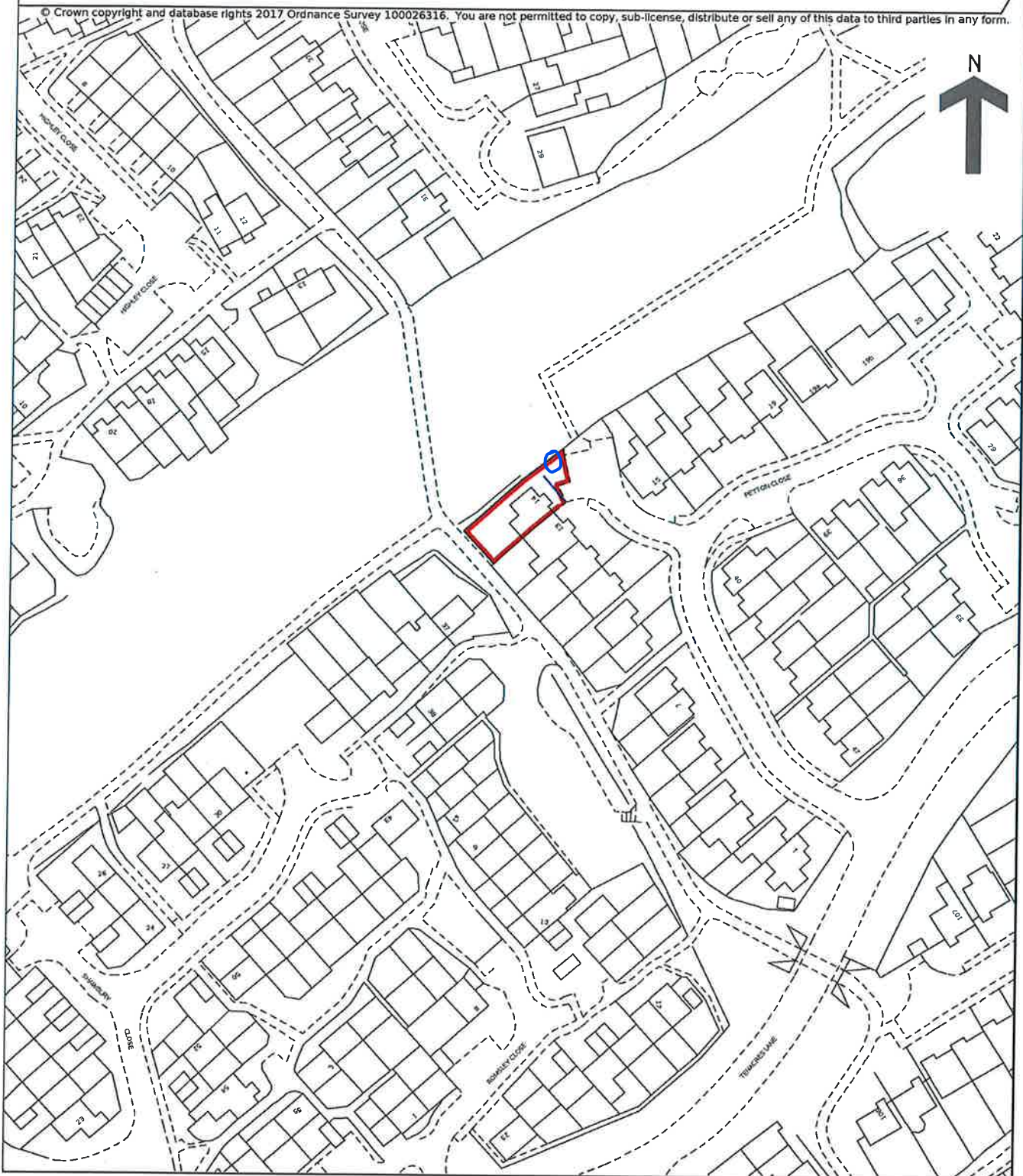
This official copy is issued on 04 May 2021 shows the state of this title plan on 04 May 2021 at 08:08:48. It is admissible in evidence to the same extent as the original (s.67 Land Registration Act 2002). This title plan shows the general position, not the exact line, of the boundaries. It may be subject to distortions in scale. Measurements scaled from this plan may not match measurements between the same points on the ground. This title is dealt with by the HM Land Registry, Coventry Office .

HM Land Registry
Official copy of
title plan

Title number **WR168431**
Ordnance Survey map reference **SP0767SE**
Scale **1:1250**
Administrative area **Worcestershire :**
Redditch



© Crown copyright and database rights 2017 Ordnance Survey 100026316. You are not permitted to copy, sub-license, distribute or sell any of this data to third parties in any form.



This official copy is incomplete without the preceding notes page.