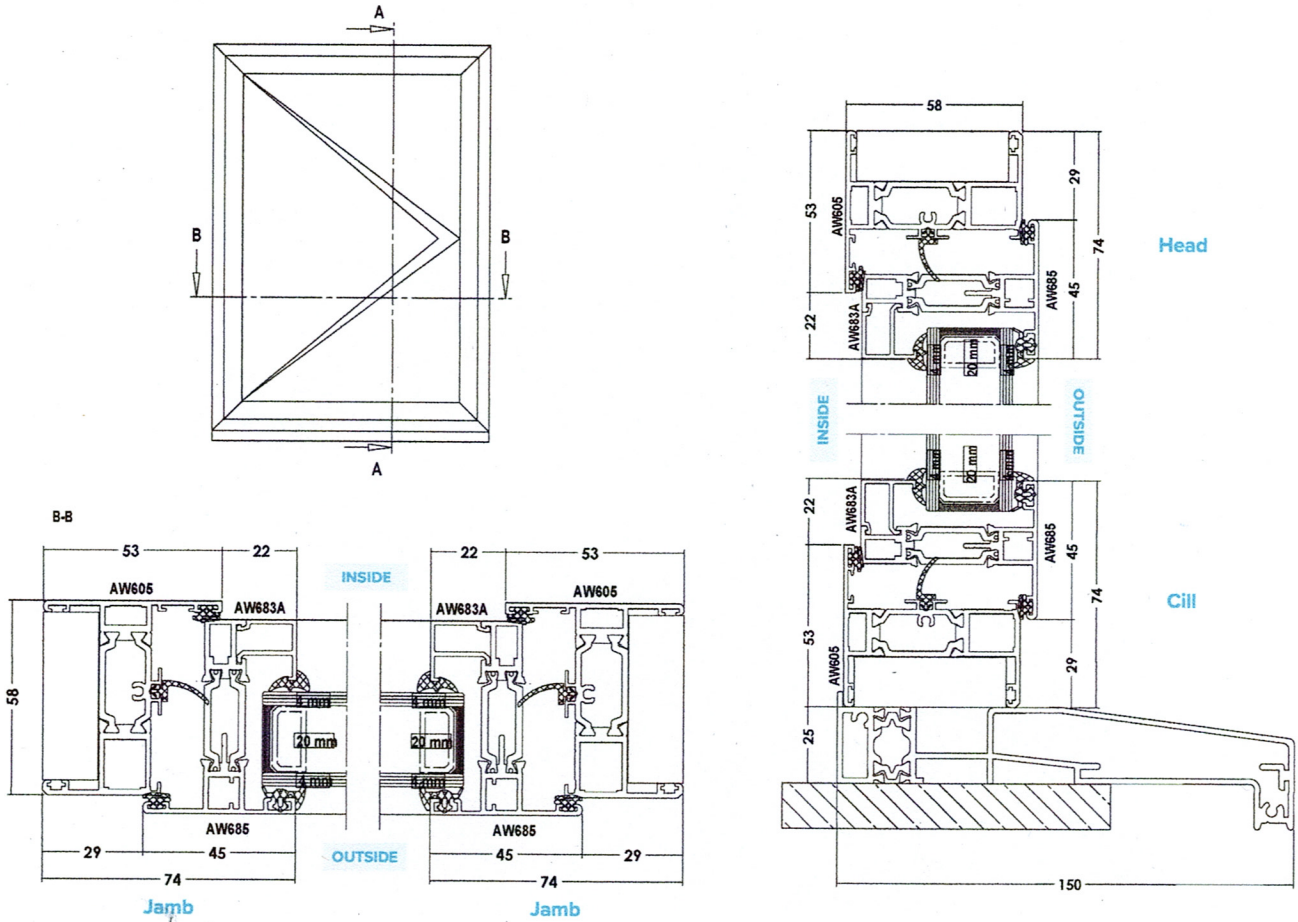


> DATASHEET SLIMLINE CASEMENT WINDOW

TECHNICAL DRAWINGS



| SIZE & WEIGHT LIMITS | |
|----------------------|-----------------|
| Top Hung | |
| Max Size (mm) | 1400w x 1200h |
| Min Size (mm) | 350w x 250h |
| Max Weight | 35kg |
| Side Hung | |
| Max Size (mm) | 700w x 1400h |
| Min Size (mm) | 300w x 350h |
| Max Weight | 26kg |
| Bottom Hung | |
| Max Size (mm) | - |
| Min Size (mm) | - |
| Max Weight | 50kg (2 hinges) |
| Fixed Light | |
| Max Size (mm) | - |
| Min Size (mm) | - |
| Max Weight | 250kg |

| PERFORMANCE | |
|--------------------------------|---------------------------|
| U-Value (Double Glazing) | (Ug: 1.0 W/m²K) 1.4 W/m²K |
| U-Value (Triple Glazing) | (Ug: 0.7 W/m²K) 1.2 W/m²K |
| Window Energy Rating (WER) | A-B |
| BRE Green Guide Rating | A rated |
| Air Permeability | Class 4 (600 Pa) |
| Water Tightness | Class 9a (600pa) |
| Wind Resistance | Class E2400 (2400 Pa) |
| Acoustic Performance | Rw (C;Ctr) 42 (-1;-5) dB |
| Security | PAS 24 & SBD |
| 3rd Party Certification Q Mark | ✓ |

| BUILDING REGULATIONS | |
|----------------------|-----------|
| Part L | Compliant |
| Part F | Compliant |
| Part M | Compliant |
| Part Q | Compliant |

| SIGHTLINES | |
|------------|------|
| Head | 74mm |
| Cill | 99mm |
| Jamb | 74mm |
| Mullion | 79mm |

| FINISHES | |
|-----------------|---|
| Single Colour | ✓ |
| Dual Colour | ✓ |
| Textured Finish | ✓ |
| Anodised Finish | ✓ |

| DETAILS | |
|-------------------|-----------|
| Frame Depth | 58 / 70mm |
| Glazing Thickness | 28mm |