

REVISIONS:
 B - 17/8/21 REDRAWN
 C - 1/3/22 MINOR

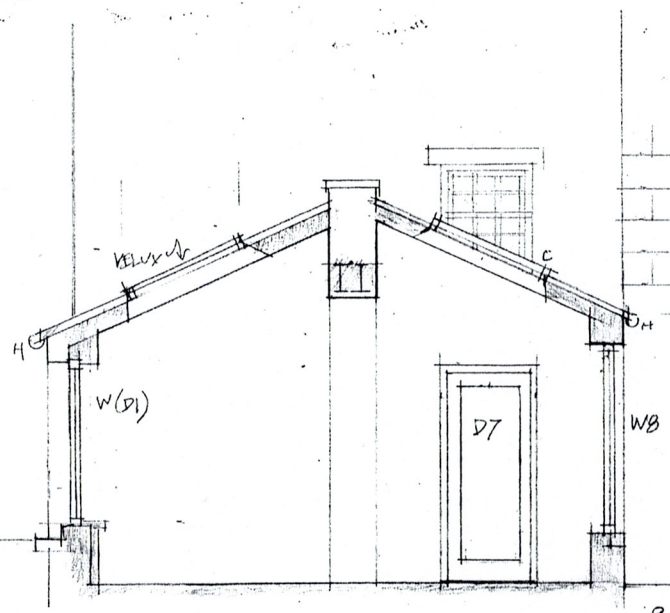
HIGH GREEN, MICKLETON
 PROPOSED GROUND FLOOR (PART)
 (GARDEN SUN ROOM AND
 INTERNAL ALTERATIONS)
 SCALE 1:50 @ A3


 GEORGE STASTNY
 CHARTERED ARCHITECT & GARDEN DESIGNER
 Riverside, Whorlton
 Nr. Barnard Castle,
 Co. Durham DL12 8XD
 07974 230919

PLAN NO 1284-30C

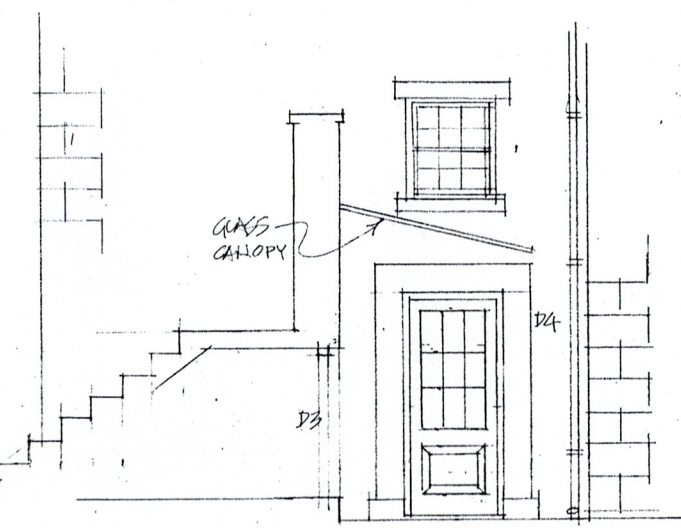
REVISIONS:
 A - 23/8/21 MINOR.
 B - 27/8/21 MINOR
 C - 31/8/21 SECTION W/D1
 D - 2/9/21 W(D2) ADJUSTED
 E - 3/9/21 W4 ADJUSTED
 F - 1/3/22 W(D2) ADJUSTED

NOTES:
 1. FOR SCHEDULE OF MATERIALS
 SEE PLAN 1284-32

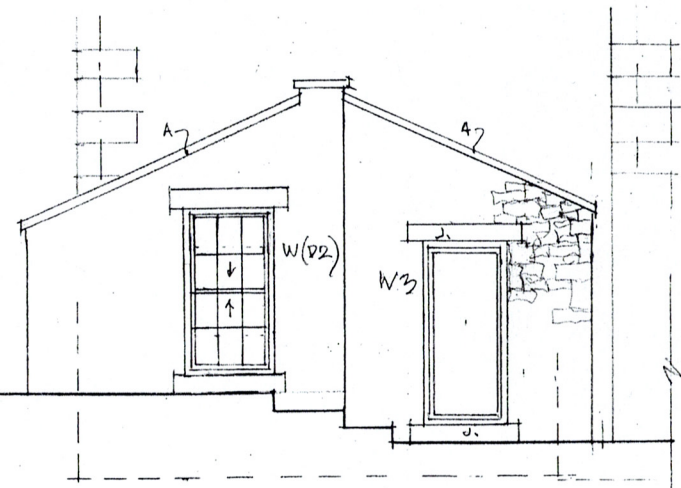


SECTION

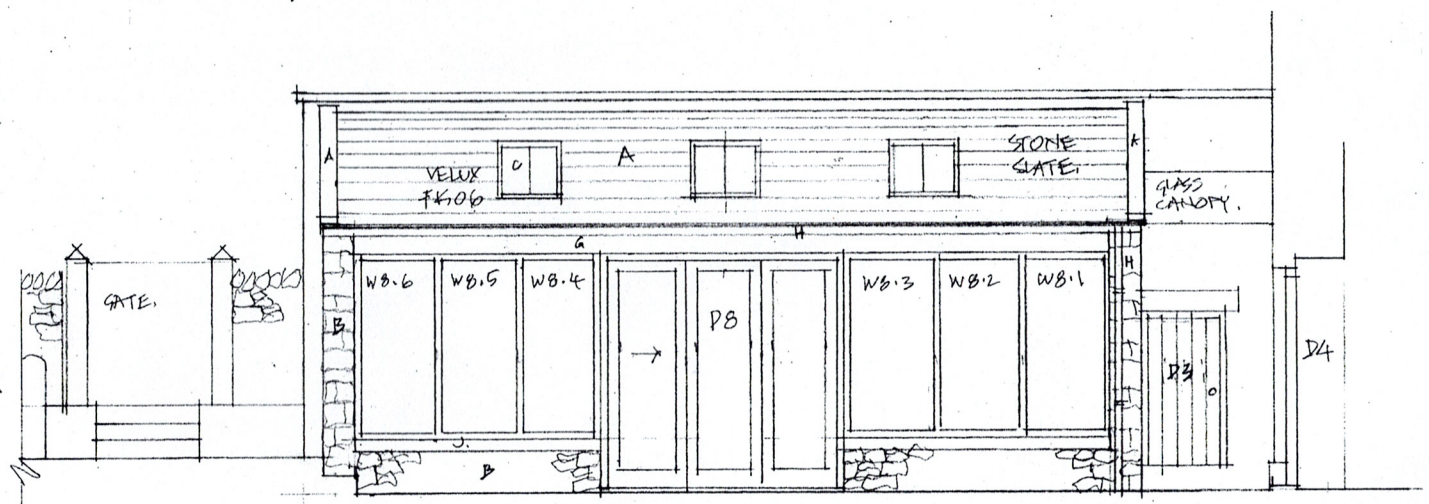
9.00 TBM



SECTION / SOUTH ELEVATION



SOUTH ELEVATION



EAST ELEVATION

9.00 TBM

HIGH GREEN, MCKLETON
 PROPOSED GARDEN SUN ROOM
 ELEVATIONS.

SCALE 1:50 @ A3



GEORGE STASTNY
 CHARTERED ARCHITECT & GARDEN DESIGNER
 Riverside, Whoriton
 Nr. Barnard Castle,
 Co. Durham DL12 6XD
 07974 230919

PLAN N° 1284-31F

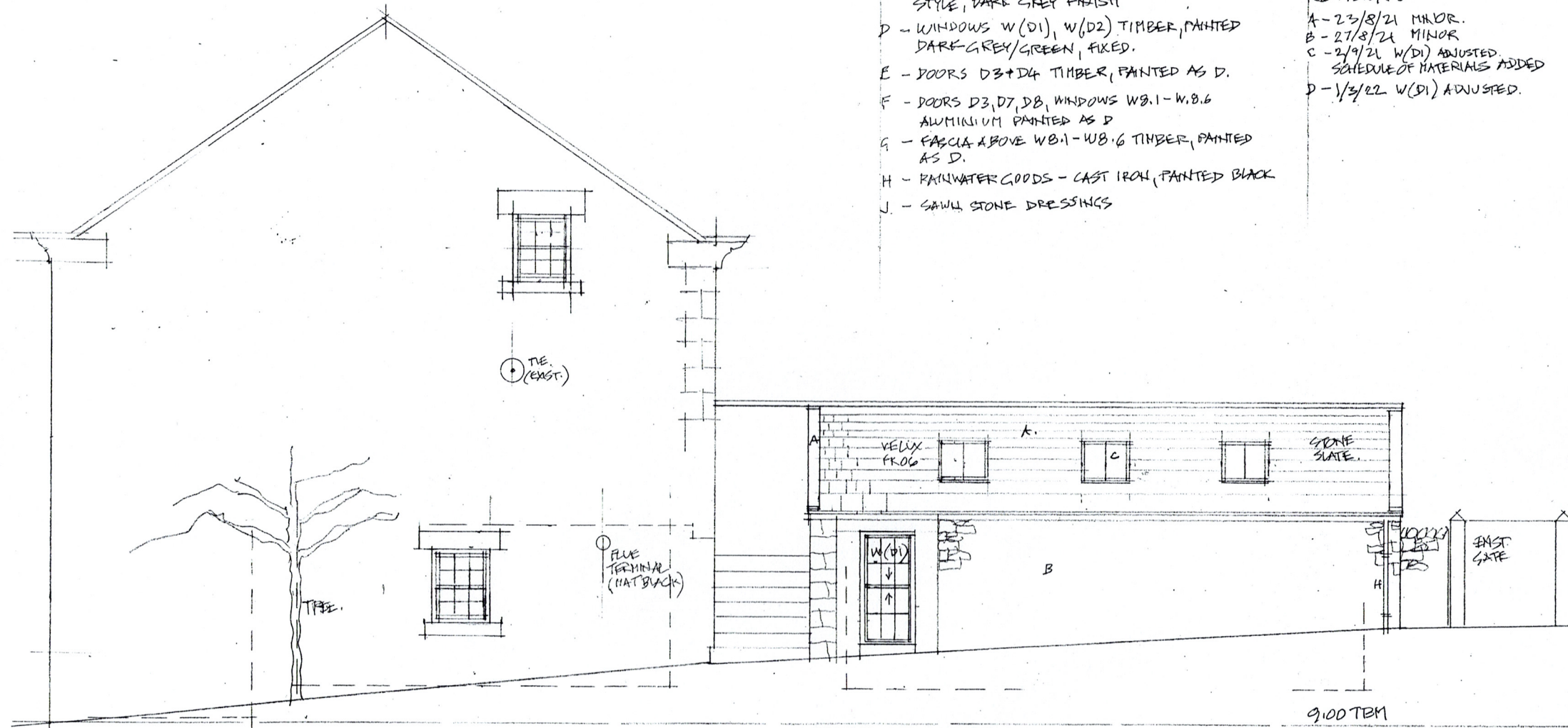
SCHEDULE OF MATERIALS

- A - TEESDALE STONE SLATE LAY TO DINING CHAIR COURSES, STONE WATERTABLE.
- B - RANDOM RUBBLE STONEMWORK, BROUGHT TO COURSES (TO MATCH EXISTING)
- C - 'VELUX' ROOF WINDOWS, CONSERVATION STYLE, DARK GREY FINISH
- D - WINDOWS W(D1), W(D2) TIMBER, PAINTED DARK GREY/GREEN, FIXED.
- E - DOORS D3+D4 TIMBER, PAINTED AS D.
- F - DOORS D3, D7, D8, WINDOWS WB.1 - WB.6 ALUMINIUM PAINTED AS D
- G - FASCIA ABOVE WB.1 - WB.6 TIMBER, PAINTED AS D.
- H - RAINWATER GOODS - CAST IRON, PAINTED BLACK
- J - SAWH STONE DRESSINGS

NOTES:

REVISIONS:

- A - 23/8/21 MAJOR.
- B - 27/8/21 MINOR.
- C - 2/9/21 W(D1) ADJUSTED.
- SCHEDULE OF MATERIALS ADDED
- D - 1/3/22 W(D1) ADJUSTED.



WEST ELEVATION

HIGH GREEN, MICKLETON
 PROPOSED GARDEN SUN ROOM
 WEST ELEVATION
 SCALE 1:50 @ A3



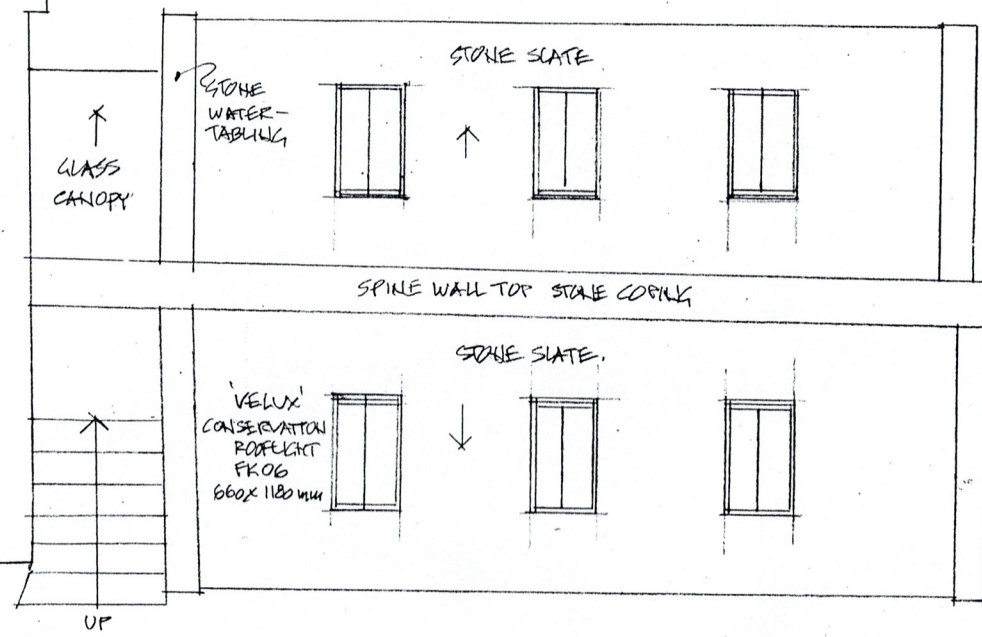
GEORGE STASTNY
 CHARTERED ARCHITECT & GARDEN DESIGN
 Riverside, Whorlton
 Nr. Barnard Castle,
 Co. Durham DL12 8XD
 07974 230919

PLAN No 1284-32D

NOTES:

REVISIONS:

HOUSE 2

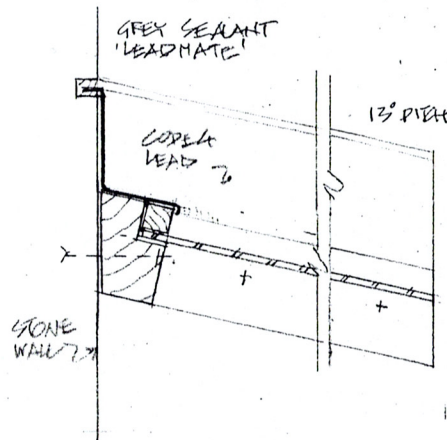


HIGH GREEN, MICKLETON
 PROPOSED GARDEN SUN ROOM
 ROOF PLAN
 SCALE 1:50 @ A3

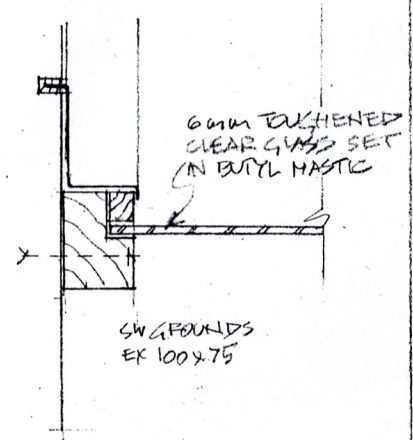


GEORGE STASTNY
 CHARTERED ARCHITECT & GARDEN DESIGNER
 Riverside, Whorlton
 Nr. Barnard Castle,
 Co. Durham DL12 8XD
 07974 230919

PLAN NO 1284-33

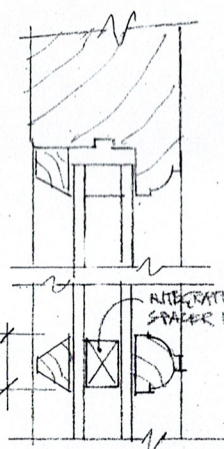


SECTION AT TOP

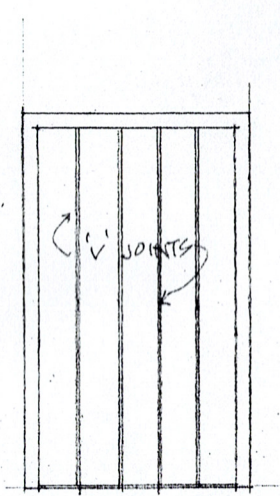


SIDE SECTION

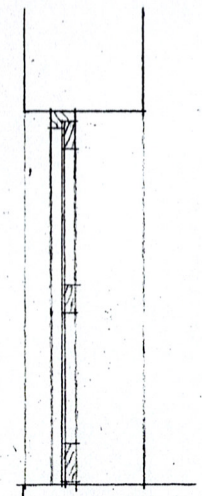
DETAIL OF 'LINK STRUCTURE' CANOPY
SCALE 1:5



SECTION 1:2
DETAIL A

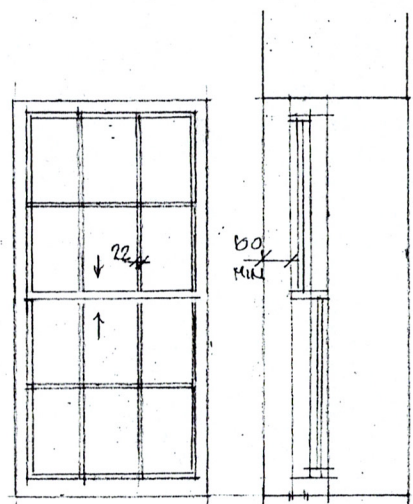


D3 SCALE 1:20
BOARDED + LEDGED.

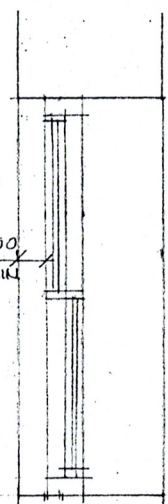


SECTION D3

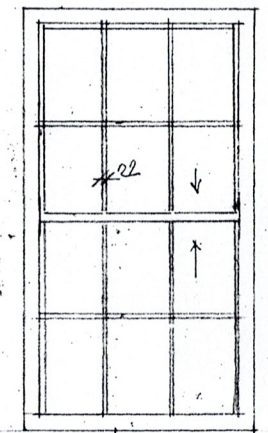
ALL WINDOWS AND DOORS TO BE OF THIS CONSTRUCTION,
PAINTED TO MATCH EXIST. (DARK GREEN, BS 4800 KC 39 APPROX)
ON OLD GLAZING BARS AS HALF SCALE DETAIL A



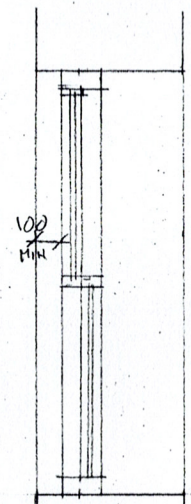
W(D1) SCALE 1:20
SLIDING SASH



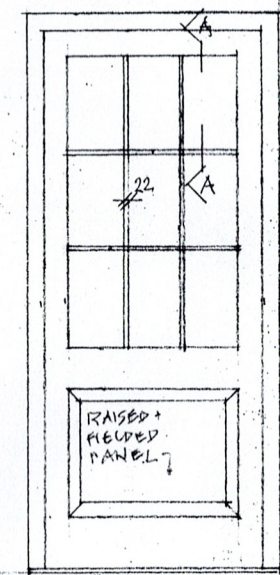
SECTION
W(D1)



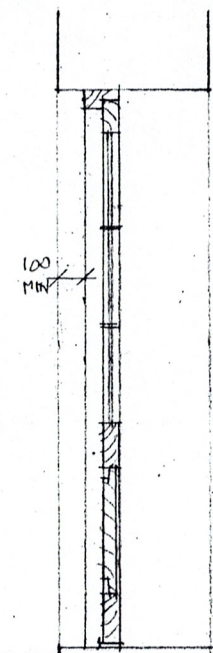
W(D2) SCALE 1:20
SLIDING SASH.



SECTION
W(D2)



D4 SCALE 1:20



SECTION
D4

REVISIONS:
A - 1/3/22 W(D1) + W(D2)
ADJUSTED.

NOTES:
1. FOR DETAILS OF SLIDING
SASH WINDOWS SEE PLAN
NO 1284-42

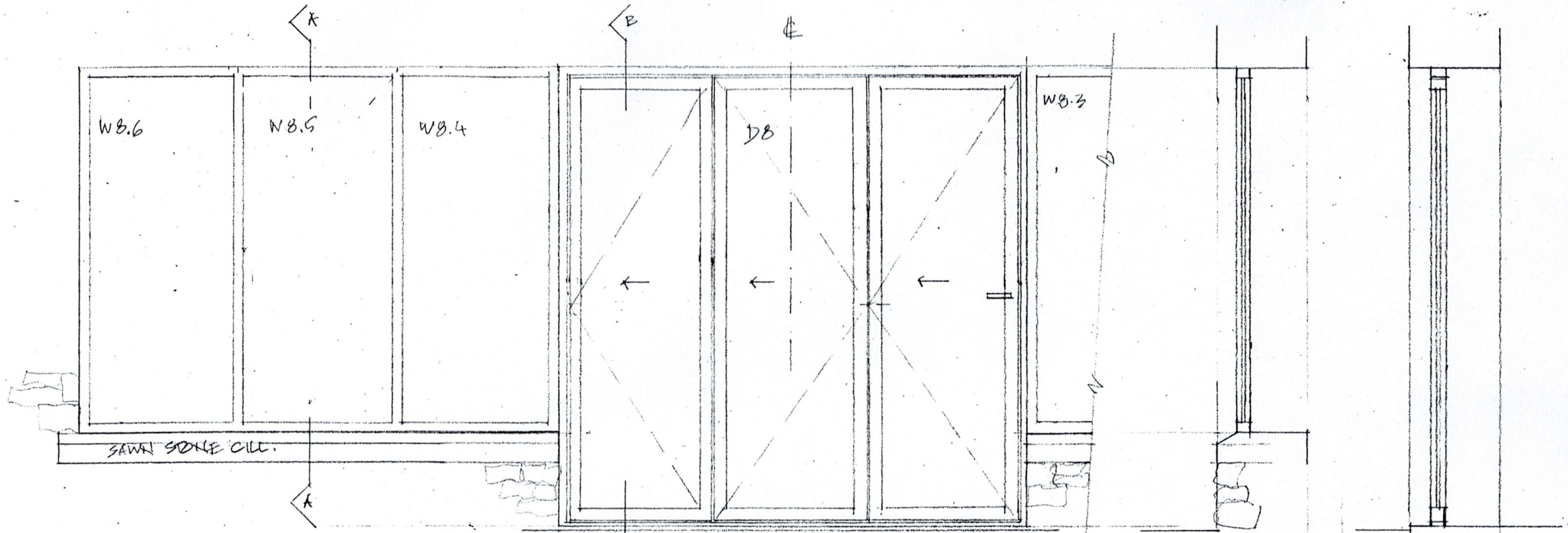
HIGH GREEN, MICKLETON
DL12 8UX

PROPOSED DETAILS
SCALE AS SHOWN @ A3



GEORGE STASTNY
CHARTERED ARCHITECT & GARDEN DESIGN
Riverside, Whorlton
Nr. Barnard Castle,
Co. Durham DL12 8XD
07974 230919

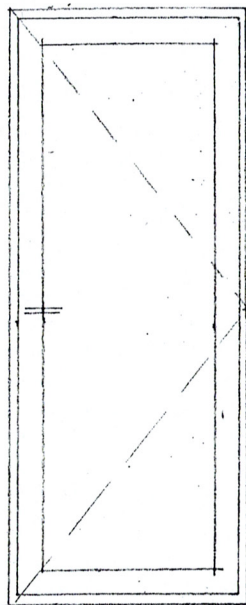
PLAN NO 1284-40A



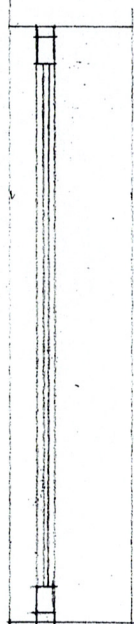
WINDOW / INFOLD DOOR ASSEMBLY
WB.1 - WB.6 FIXED GLAZED.

SECTION A
WB.5

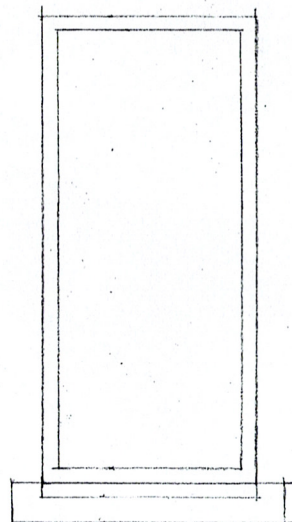
SECTION B
DB



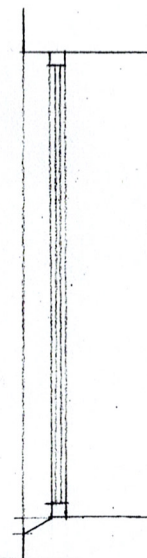
DOOR D7
(OPEN W)



SECTION
(D7)



WINDOW W3
FIXED, CLEAR GLAZED.



SECTION
W3

- NOTES:
1. FRAMES AS VIEWED FROM OUTSIDE
 2. ALL GLAZING CLEAR GLASS.

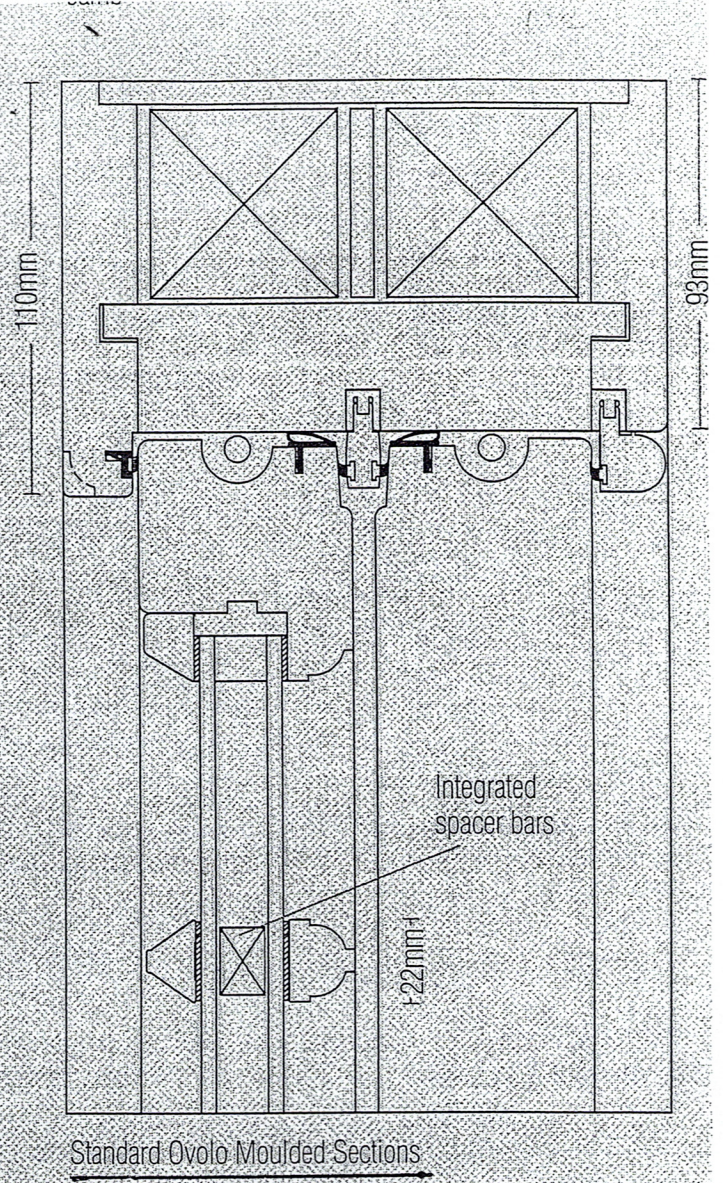
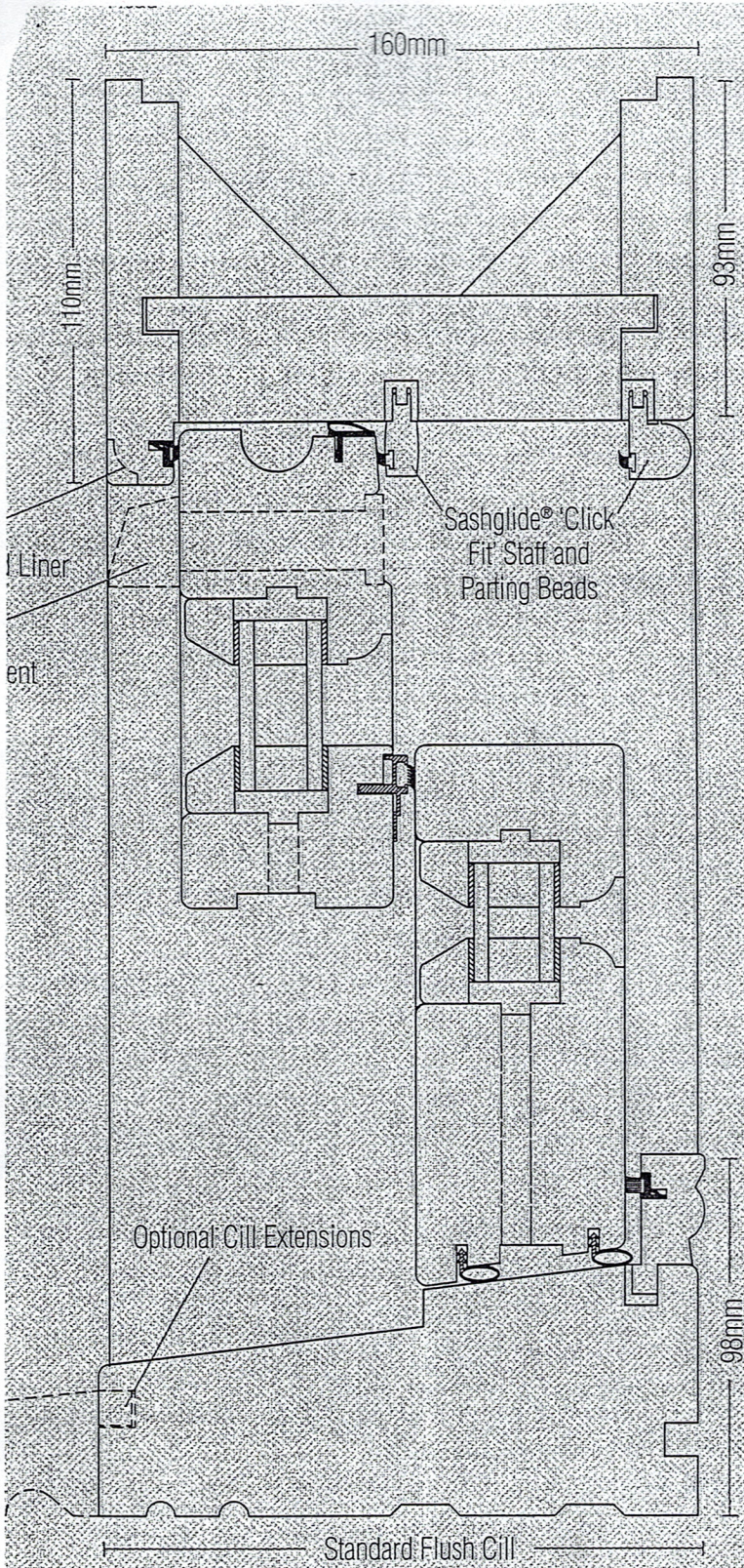
- REVISIONS:
- A - 1/3/22 WB.5, WB.2, DB ADJUSTED.

HIGH GREEN, MCKLEEDON
PROPOSED DETAILS
SCALE 1:20 @ A3



GEORGE STASTNY
CHARTERED ARCHITECT & GARDEN DESIGNER
Riverside, Whorlton
Nr. Barnard Castle,
Co. Durham DL12 8XD
07974 230919

PLAN NO 1284 -41A

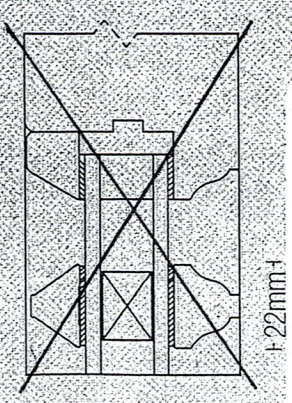
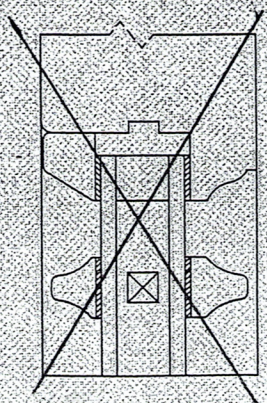


HIGH GREEN,
MICKLETON

WINDOW DETAILS
W(D1) + W(D2)

SCALE 1:2 @ A4

Optional sash profiles

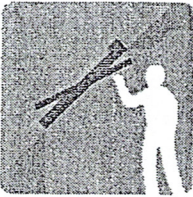


GEORGE STASTNY
CHARTERED ARCHITECT & GARDEN DESIGN
Riverside, Whorlton
Nr. Barnard Castle,
Co. Durham DL12 8XD

PLAN NO 1284-42

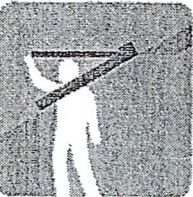


GGL/GPL Conservation Roof Window



The VELUX Conservation roof window provides all the technically superior features of a VELUX Roof Window in a traditional black conservation style including glazing bar/s. The GGL centre-pivot and GPL top-hung windows are manufactured in high quality natural pine with a clear lacquered pine internal finish.

The Centre-pivot (GGL) is manually operated and is recommended by VELUX for higher reach windows. To watch an illustration of how the window operates [click here](#).



The Top-hung (GPL) is manually operated and is recommended by VELUX for lower level installation and is ideal for shallower roof pitches. It is also suitable for escape purposes. To watch an illustration of how the window operates [click here](#).

Features/Benefits

- Ventilation bar with dust and insect filter – *Allows fresh air to enter the room while the window is securely closed*
- Friction springs – *Allows easy operation of window*
- Sash rotates 180° from inside – *Allows easy and convenient cleaning*
- Barrel bolt – *Allows the window to be locked in two positions – At 180° for secure cleaning of the exterior pane internally – At 5° to allow extra ventilation*

Operation

GGL – The window is operated manually using the full width control bar on the ventilation flap along the top of the sash.
GPL – The sash which is top-hung is opened and closed using the bottom handle and can remain open in any position up to 45°.

To watch an illustration of how the window operates [click here](#).

Glazing options

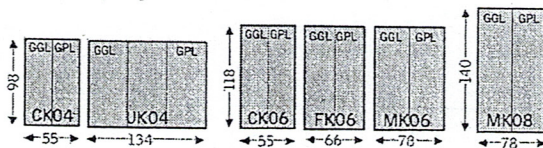
- (-50) glazing Double glazed, toughened outer pane. Also available in;
- (-60) glazing Double glazed, laminated inner pane, toughened outer pane with Easy-to-clean coating, enhanced noise reduction.
- (-70) glazing Double glazed, laminated inner pane, toughened outer pane.

For further information regarding VELUX glazing options [click here](#).

Cladding

- NCS standard colour (Black), Nearest RAL standard colour: 9005.

Sizes (cm)



Centre-pivot

- Tiles 15-90°
- Tiles (recessed) 20-90°
- Plain tiles 25-90°
- Slate (recessed) 20-90°



Top-hung

- Tiles 15-55°
- Tiles (recessed) 20-55°
- Plain tiles 25-55°
- Slate (recessed) 20-55°

TOP HUNG - For roof pitches from 55°-75°, please specify special springs when ordering.

Maintenance

The pane should be cleaned with a soft, clean, lint-free cloth or non-abrasive sponge. The rest of the window can be cleaned with ordinary household cleaners. The filter can be removed and either washed or replaced.

For further advice on maintenance please [click here](#).

Guarantee

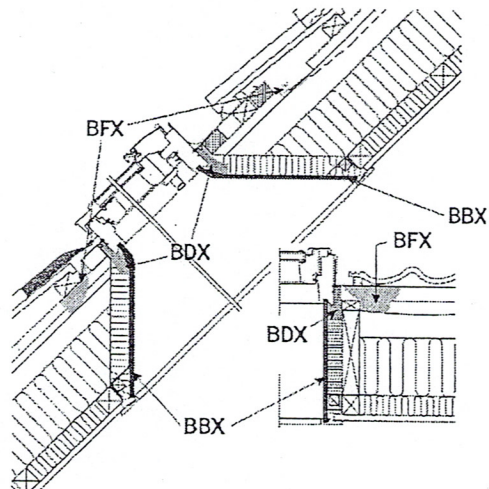
- 10 year VELUX guarantee on windows and flashing kits.
- 3 year guarantee on blinds, shutters, awnings and electrics.

[Click here](#) for further information regarding the VELUX guarantee.

Interior finish option

- GGL
 - White paint finish.
- GPL
 - White paint finish.

Best practice installation



Technical data – GGL/GPL Conservation

Size	Window Options	Exterior Frame		Visible Glass	Lining Rebate
		WxH	exf	exf	kxl
CK04	GGL	550 x 978	371 x 783	495 x 919	
CK06	GGL	550 x 1178	371 x 983	495 x 1119	
FK06	GGL	660 x 1178	481 x 983	605 x 1119	

Size	Window Options	Exterior Frame		Visible Glass	Lining Rebate
		WxH	exf	exf	kxl
MK06	GGL	780 x 1178	601 x 983	725 x 1119	
MK08	GGL, GPL	780 x 1398	601 x 1203	725 x 1339	
UK04	GGL	1340 x 978	1161 x 783	1285 x 919	