

External Surfaces

A paired-back palette of paving materials will help create a calm, harmonious feel to the landscape. Being located on a flood plain, the material selection has a strong emphasis on permeability.

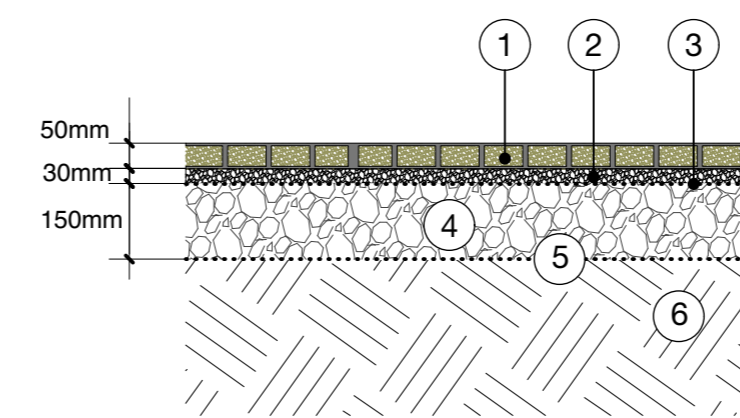
The areas of movement, such as the driveway and paths will be denoted with reinforced gravel. This surface creates a soft, natural feel, with a hidden reinforcing mesh to stop migration of the gravel onto other surfaces.

The terraces will be laid by slab format paving, which adds a feeling of space in this location.

The undercroft of the house will be laid with permeable sett paving, also interplanted with shade loving plants, to further aid surface water run-off.

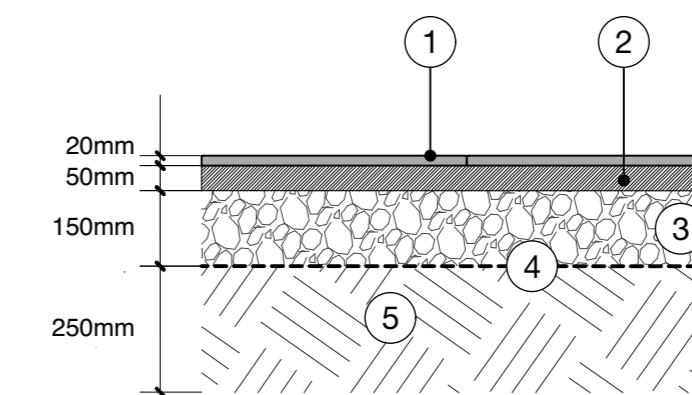
A lawn will be laid to the rear of the house and the various ornamental planting borders help create a balance of materials with the gravel.

Reinforced gravel



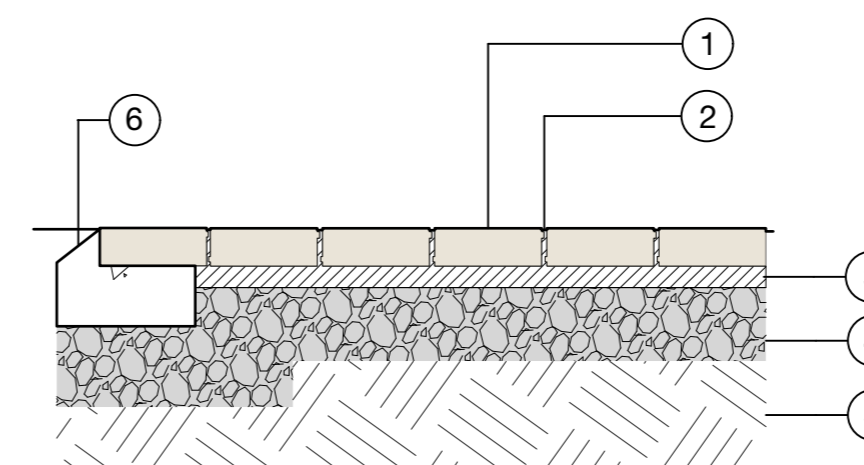
- 1 **Surface:**
Core drive 50-30 + gravel infill
derbyshire grey limestone 8-10mm size
- 2 **Bedding:**
30mm angular stone
up to 10mm grade
- 3 **non woven geotextile**
- 4 **Sub-base:**
150mm dtp type 3
limestone scalpings
- 5 **Geotextile:**
To prevent upward migration of soil
particles
- 6 **Sub-grade:**
Excavated

Slab paving



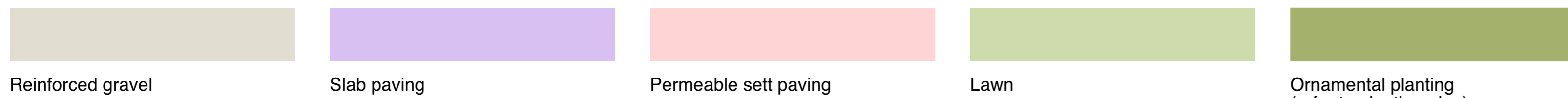
- 1 **Surface:**
Slab paving
- 2 **Bedding**
- 3 **Sub-base**
Dtp type 1
- 4 **Geotextile membrane**
- 5 **Sub-grade:**
Excavated

Permeable sett paving



- 1 **Surface:**
Sett paving
- 2 **Jointing:**
1-4mm aggregate
- 3 **Bedding layer:**
50mm 2-6mm aggregate
clean grit
- 4 **Haunching:**
150mm compacted dtp type 2
granular
- 5 **Sub-base:**
250mm minimum compacted
dtp type 3
- 6 **Sub-grade:**
Excavated

ADDITIONAL NOTES:
 - ALL VEHICULAR SURFACES TO ENG. SPEC.
 - DESIGN STANDARD: BS 7533-1:2001 (HEAVY TRAFFIC)
 OR BS 7533-2:2001 (LIGHT TRAFFIC)
 - LAYING STANDARD: BS 7533-3:2005



Reinforced gravel Slab paving Permeable sett paving Lawn Ornamental planting (refer to planting plan)

ndld
 melway
 55 canning street
 brighton BN2 0EF
 Nicholas Dexter Ltd.
 Registered in England & Wales.
 Company No. 9857969
 T +44 (0) 1273 69 28 78
 www.nicholasdexter.com
 info@nicholasdexter.com

General notes:

1. Only figured dimensions are to be worked from.
2. Contractors must check all dimensions on site.
3. Discrepancies must be reported to the Landscape architect before proceeding.
4. Not suitable for construction unless stated below
5. This drawing is to be read in conjunction with all relevant Architect's drawings, specifications and other Consultant's information.

SGD SOCIETY OF GARDEN DESIGNERS

CLIENT Williamson **PROJECT** Williamson House

PRINT SIZE A1 **SCALE** various

STAGE Planning