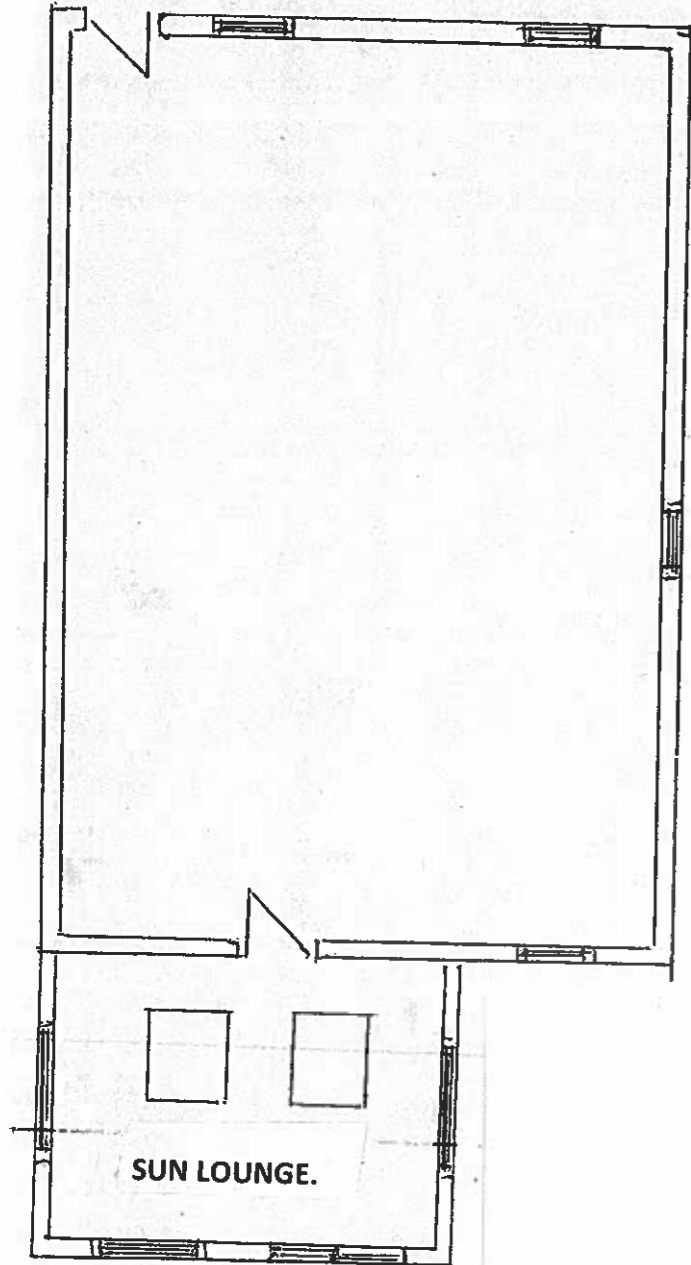
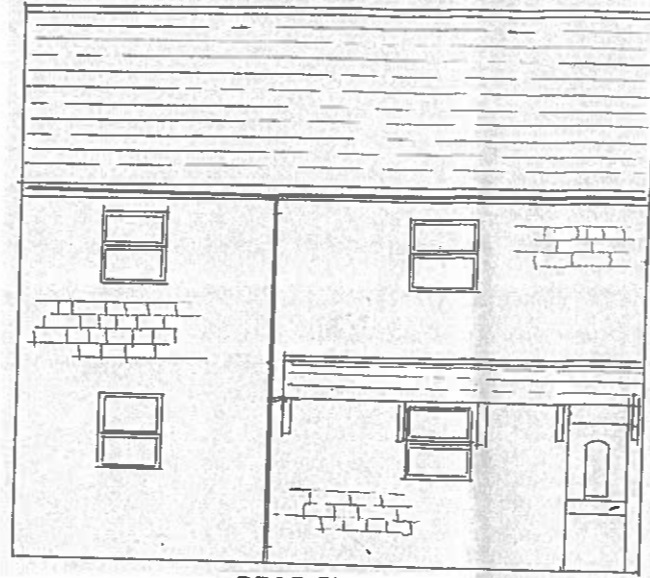


PROPOSED PLAN.



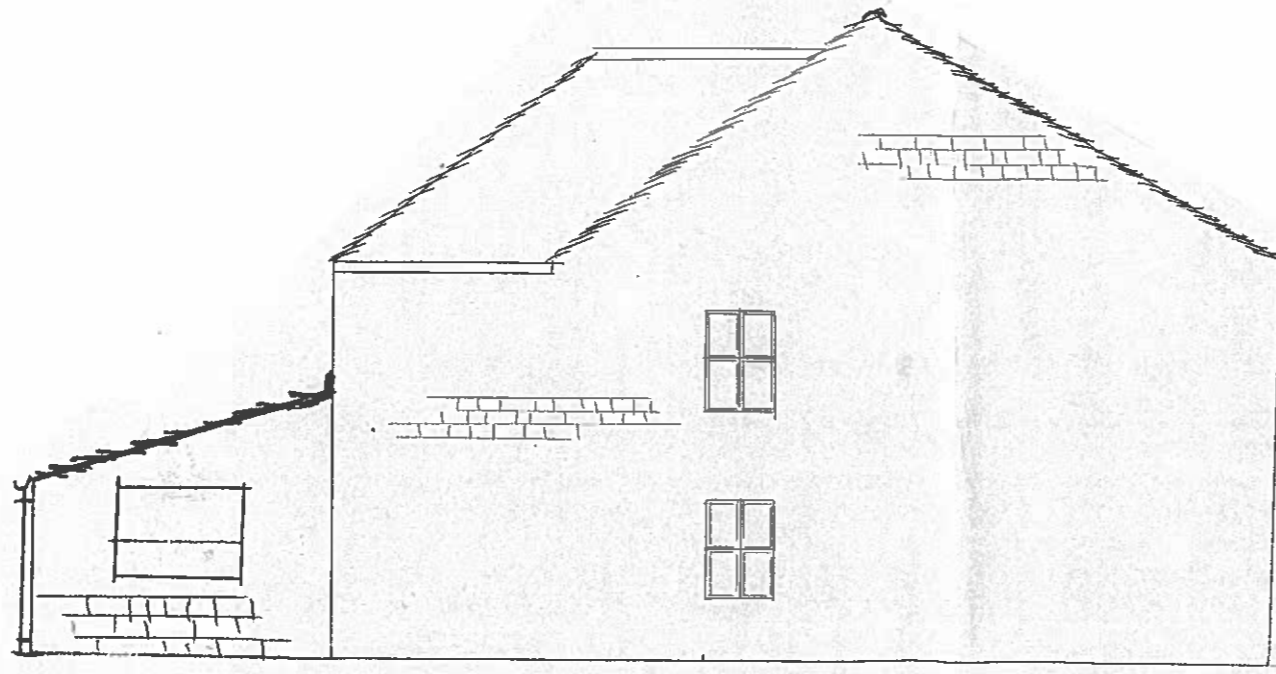
FRONT ELEVATION



REAR ELEVATION

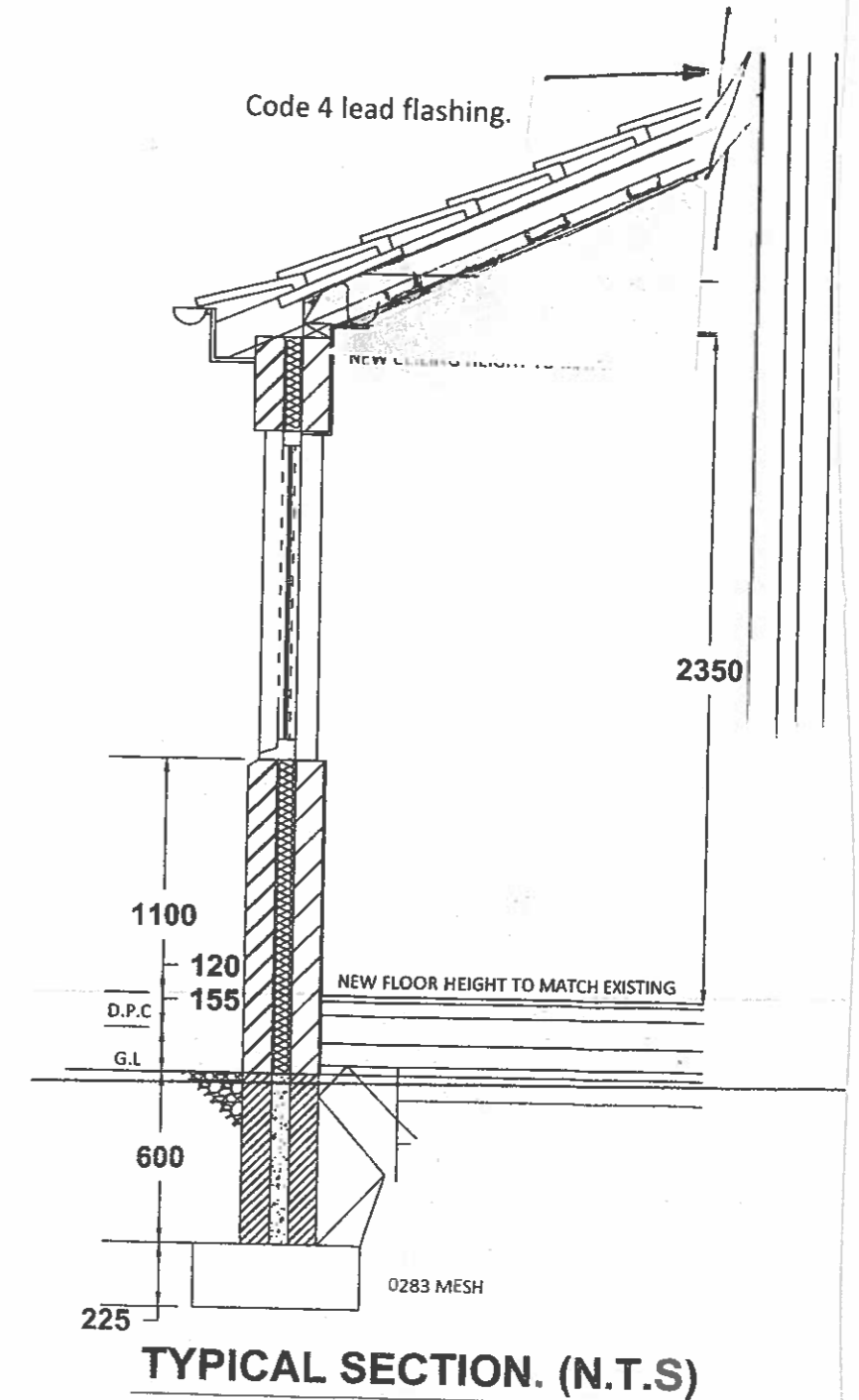


SIDE ELEVATION.



Vaulted Ceiling.

Vapour permeable membrane 150mm rafter @ 600c's. 100mm Kingspan or similar to provide adequate air gap. Vapour control layer between ceiling and insulation, ensure good seal at perimeters. Ensure continuity from ceiling to wall vcl. Seal all penetrations through ceiling using flexible sealant. Use jointing tape at ceiling to wall joint prior to finish plaster. Fit an air permeable cavity closure at the top of the external wall.



TYPICAL SECTION. (N.T.S)