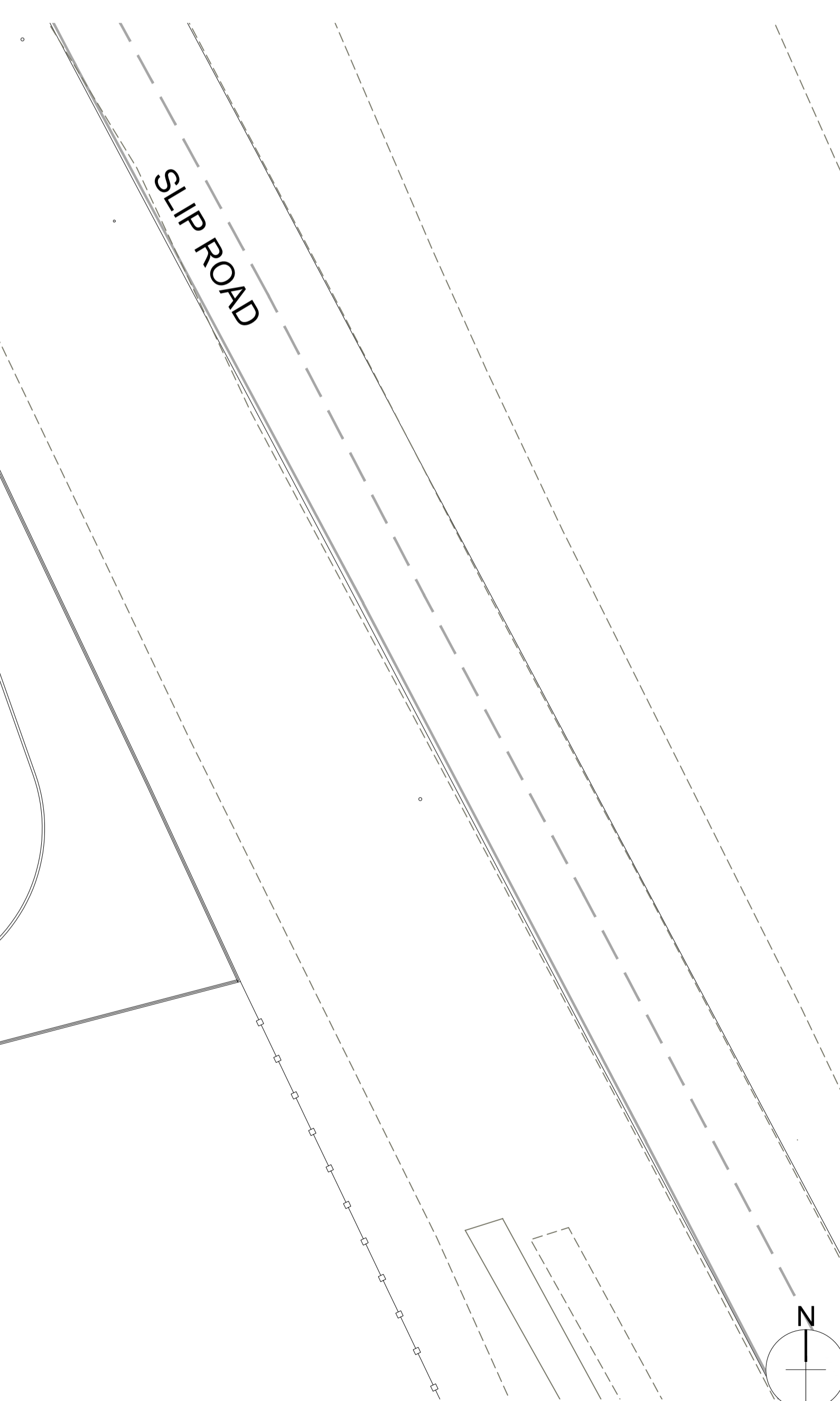
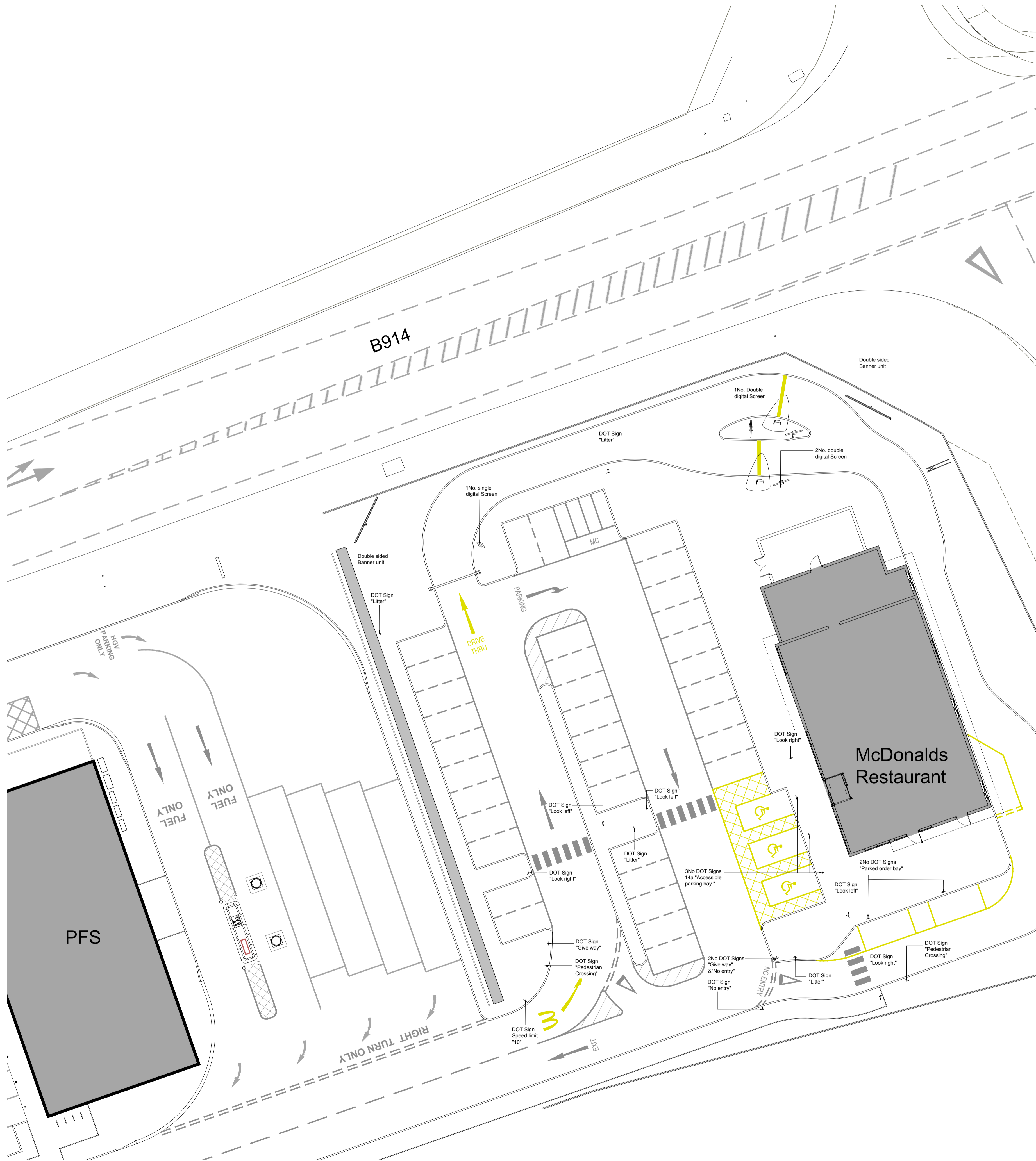


Notes:
 All drawings to be read in conjunction with all other drawings as noted on issue sheet.

ADVERT REF	SIGN TYPE	QTY	SIZE (mm)	MATERIALS	COLOUR	HEIGHT (mm) ABOVE GROUND	EXTENT (mm) OF PROJECTION	HEIGHT (mm) OF TEXT	ILLUMINATION
GOAL POST HEIGHT RESTRICTOR	NA	1	4500W x 150D x 3200H	Steel circular hollow section goal post sign with bar suspended on chains. Sign panel with "Golden Arch" and "Drive Thru, MAX HEIGHT 2.7M / 8'10"	Black, Khaki Green RAL 6015, Yellow & White	3200	2700 to underside of height restrictor.	N/A	None
SINGLE DIGITAL SCREEN	N/A	1	853W x 108D x 2167H	Single sided PPC aluminium housing panel with internally mounted digital media on steel support post.	Grey RAL 7022	2167	N/A	N/A	(Max. 600cd/m ²)
DOUBLE DIGITAL SCREEN	N/A	3	1648W x 108D x 2167H	Single sided PPC aluminium housing panels with internally mounted digital media on steel support post.	Grey RAL 7022	2167	N/A	N/A	(Max. 600cd/m ²)
DOUBLE SIDED BANNER UNIT	22	2	4820W x 150D x 2060H	PPC punched steel panel with 'McDonalds' wording. Sheet steel support & steel base	Green (Dulux 90YY 07/93) & Dark Grey RAL 7022	2060	N/A	N/A	None
DOT SIGN 14a 'ACCESSIBLE PARKING BAY'	24	3	280W x 700H	Aluminium sign panel with applied vinyl graphics on metal sign post fitted via mass concrete foundation.	White, Yellow & Black	1500	N/A	N/A	None
DOT SIGN 14b & 14c 'PARKED ORDER BAY'	24	2	280W x 700H	Aluminium sign panel with applied vinyl graphics on metal sign post fitted via mass concrete foundation.	White, Yellow & Black	1500	N/A	N/A	None
DOT SIGN 16c 'LITTER'	24	4	280W x 700H	Aluminium sign panel with applied vinyl graphics on metal sign post fitted via mass concrete foundation.	White, Yellow, Red & Black	1500	N/A	N/A	None
DOT SIGN 25a 'NO ENTRY'	25	2	450 Dia	Aluminium sign panel with applied vinyl graphics on metal sign post fitted via mass concrete foundation.	Red & White	1500	N/A	N/A	None
DOT SIGN 25e 'GIVE WAY'	25	2	412W x 360H	Aluminium sign panel with applied vinyl graphics on metal sign post fitted via mass concrete foundation.	Red, White & Black	1500	N/A	N/A	None
DOT SIGN 25d 'PEDESTRIAN CROSSING'	25	2	412W x 360H	Aluminium sign panel with applied vinyl graphics on metal sign post fitted via mass concrete foundation.	Red, White & Black	1500	N/A	N/A	None
DOT SIGN 'SPEED LIMIT 10mph'	N/A	1	450 Dia	Aluminium sign panel with applied vinyl graphics on metal sign post fitted via mass concrete foundation.	Red, White & Black	1500	N/A	N/A	None
DOT SIGN 'PEDESTRIANS LOOK LEFT'	N/A	3	450W x 300H	Aluminium sign panel with applied vinyl graphics on metal sign post fitted via mass concrete foundation.	White & Black	1500	N/A	N/A	None
DOT SIGN 'PEDESTRIANS LOOK RIGHT'	N/A	3	450W x 300H	Aluminium sign panel with applied vinyl graphics on metal sign post fitted via mass concrete foundation.	White & Black	1500	N/A	N/A	None



P1	20.10.2020	Form relocated	DRAWING REVISIONS	FLIP
REV.	DATE	DESCRIPTION		CHECKED

GENERAL NOTES:
 All works are to be undertaken in accordance with the Building Regulations and the latest British Standards.
 All proprietary materials and products are to be used in accordance with the manufacturer's recommendations.
 All dimensions to be checked on site prior to construction.
 All risks assessed to comply with the designer's responsibility under the Construction (Design Management) Regulations 2015.

PROPOSED DEVELOPMENT AT: M90, J4
 STORE No: NB8353
 KELTY, File KY4 QJR

ON BEHALF OF: McDonald's Restaurants Ltd

DRAWING TITLE: Site Layout Plan
 Site Signage

DESIGNED BY: BV
 SCALE & SIZE: 1:200@A1
 CHECKED BY: []
 DATE: Oct 2020
 DRAWING NO: 8138-SA-8353-P008 P1

NG100

