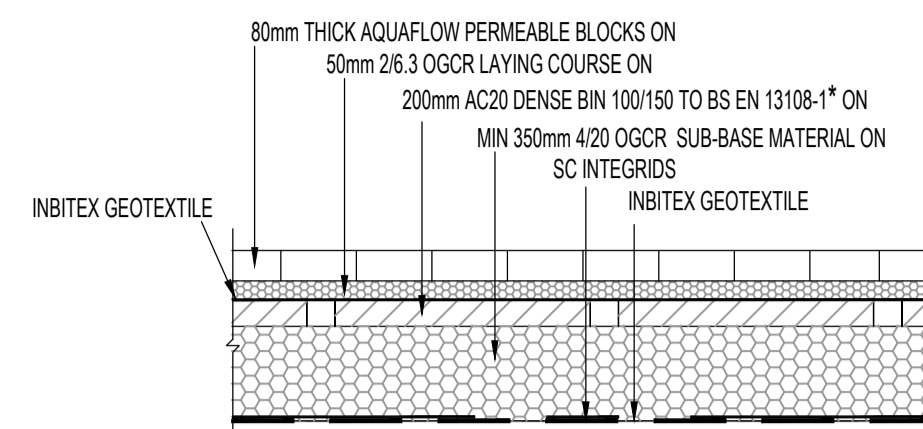


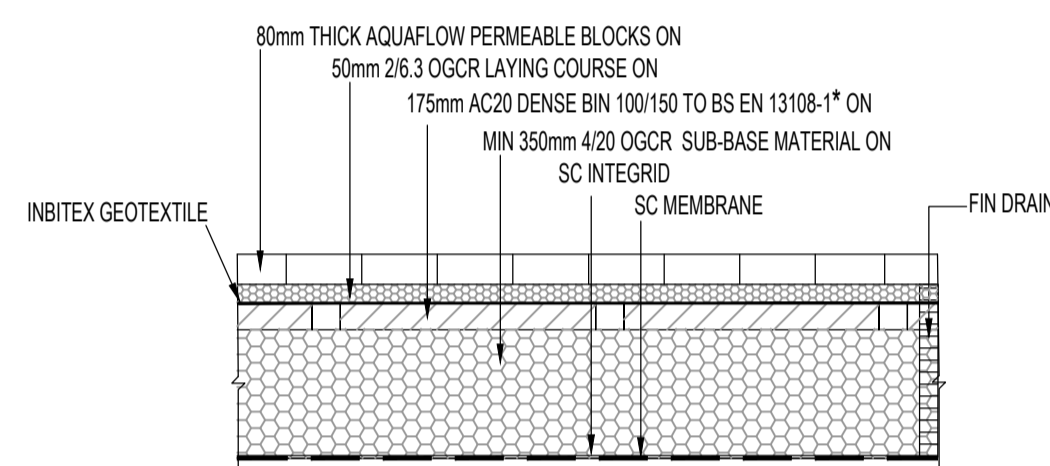
1. ALL MANUFACTURERS PAVING AND ASSOCIATED PRODUCTS ARE TO BE INSTALLED TO MANUFACTURER'S GUIDELINES.
2. 2/6.3 AND 4/20 OPEN GRADED CRUSHED ROCK/GRAVEL MATERIAL TO BS EN 12620.
4. DBM TO BE CORE CUT OR DRILLED WITH 75mmØ HOLES AT 0.8m CENTRES AND CAREFULLY FILLED WITH 26.3mm BEDDING STONE. DEBRIS MUST BE PREVENTED FROM ENTERING HOLES DURING CONSTRUCTION.
5. SUB-BASE TO HAVE A MINIMUM POROSITY OF 0.32 AND OFFER A STORAGE CAPACITY IN ITS VOIDS OF BETWEEN 30% AND 40%.
6. SC INTERGRID.
7. INBITEX GEOTEXTILE.

**PERMEABLE BLOCK PAVING  
B8 UNITS & HIGH HGV / PARKING AREAS  
TYPE A - FULL INFILTRATION**  
SCALE 1:20



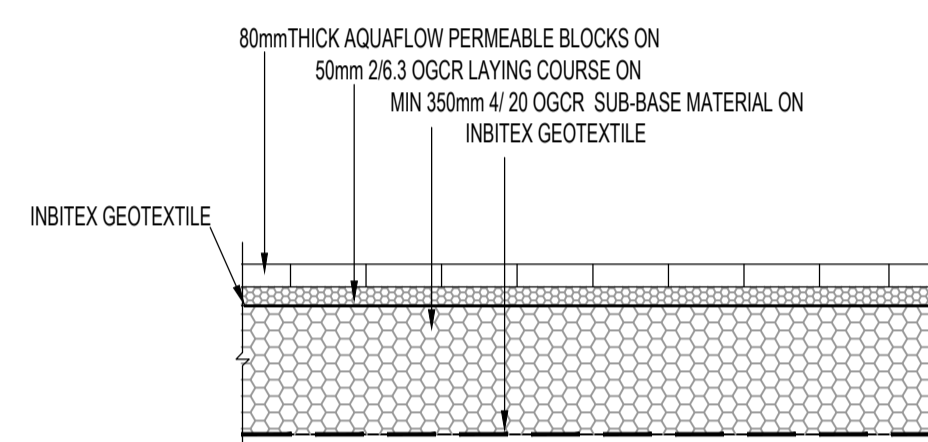
1. ALL MANUFACTURERS PAVING AND ASSOCIATED PRODUCTS ARE TO BE INSTALLED TO MANUFACTURER'S GUIDELINES.
2. 2/6.3 AND 4/20 OPEN GRADED CRUSHED ROCK/GRAVEL MATERIAL TO BS EN 12620.
3. SUB-BASE TO HAVE A MINIMUM POROSITY OF 0.32 AND OFFER A STORAGE CAPACITY IN ITS VOIDS OF BETWEEN 30% AND 40%.
4. DBM TO BE CORE CUT OR DRILLED WITH 75mmØ HOLES AT 0.8m CENTRES AND CAREFULLY FILLED WITH 26.3mm BEDDING STONE. DEBRIS MUST BE PREVENTED FROM ENTERING HOLES DURING CONSTRUCTION.
5. SC INTERGRID.
6. INBITEX GEOTEXTILE.

**PERMEABLE BLOCK PAVING  
MAIN ROAD  
TYPE A - FULL INFILTRATION**  
SCALE 1:20



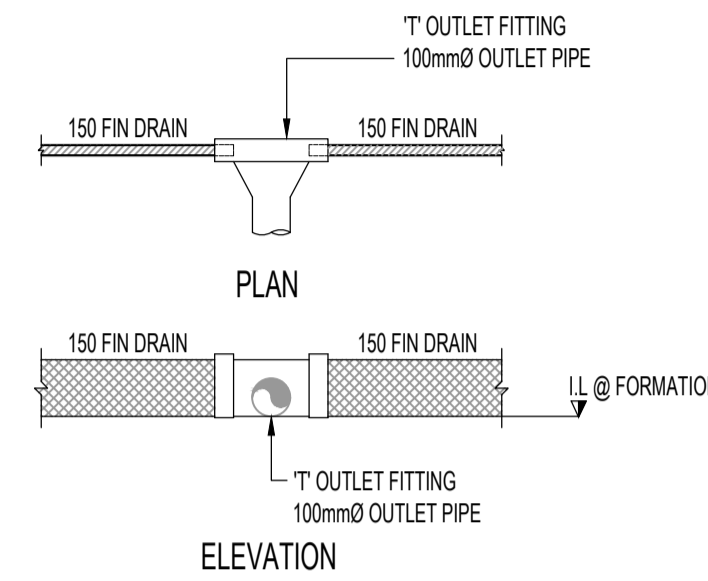
1. ALL MANUFACTURERS PAVING AND ASSOCIATED PRODUCTS ARE TO BE INSTALLED TO MANUFACTURER'S GUIDELINES.
2. 2/6.3 AND 4/20 OPEN GRADED CRUSHED ROCK/GRAVEL MATERIAL TO BS EN 12620.
4. DBM TO BE CORE CUT OR DRILLED WITH 75mmØ HOLES AT 0.8m CENTRES AND CAREFULLY FILLED WITH 26.3mm BEDDING STONE. DEBRIS MUST BE PREVENTED FROM ENTERING HOLES DURING CONSTRUCTION.
5. SUB-BASE TO HAVE A MINIMUM POROSITY OF 0.32 AND OFFER A STORAGE CAPACITY IN ITS VOIDS OF BETWEEN 30% AND 40%.
6. SC INTERGRIDS.
7. SC MEMBRANE BY FORMPAVE.

**PERMEABLE BLOCK PAVING  
B2 UNITS & HIGH HGV / PARKING AREAS  
TYPE C - NO INFILTRATION**  
SCALE 1:20



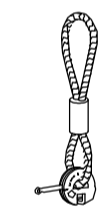
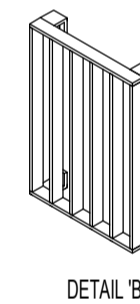
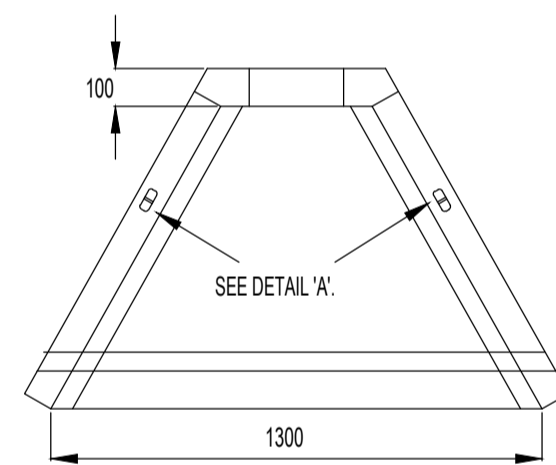
1. ALL MANUFACTURERS PAVING AND ASSOCIATED PRODUCTS ARE TO BE INSTALLED TO MANUFACTURER'S GUIDELINES.
2. 2/6.3 AND 4/20 OPEN GRADED CRUSHED ROCK/GRAVEL MATERIAL TO BS EN 12620.
3. SUB-BASE TO HAVE A MINIMUM POROSITY OF 0.32 AND OFFER A STORAGE CAPACITY IN ITS VOIDS OF BETWEEN 30% AND 40%.
5. INBITEX GEOTEXTILE.

**PERMEABLE BLOCK PAVING  
LIGHT VEHICLE PARKING ONLY  
TYPE A - NO INFILTRATION**  
SCALE 1:20



**TYPICAL FIN DRAIN DETAIL**  
1:20 NAME CODE: FINDRAIN

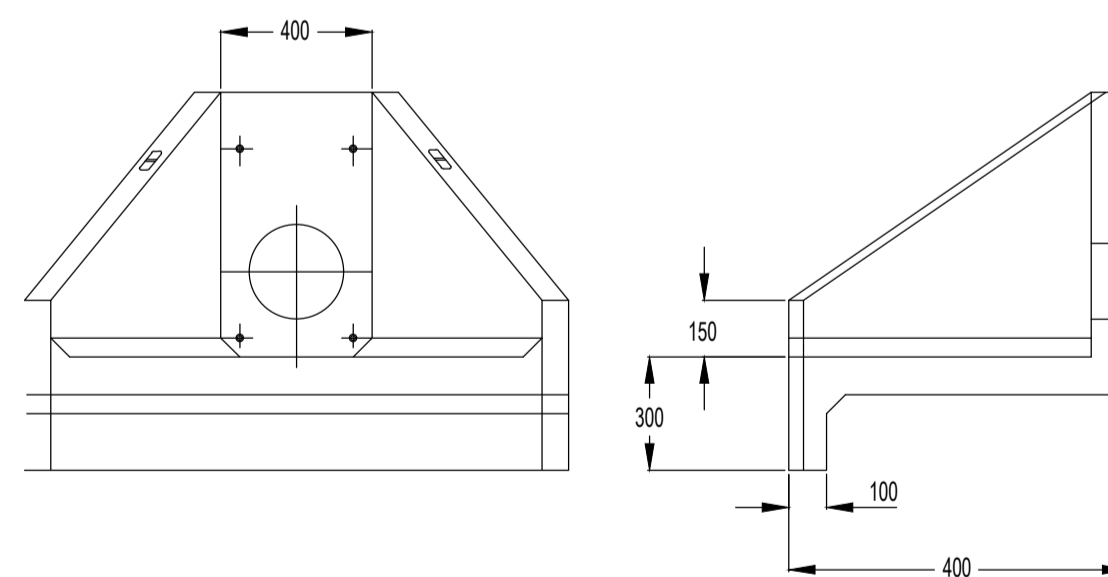
OPENING IN BACK WALL CAST TO SUIT THE OUTSIDE DIAMETER PIPE AT INVERT HEIGHT TO OPENING AS REQUIRED.



DETAIL 'A'

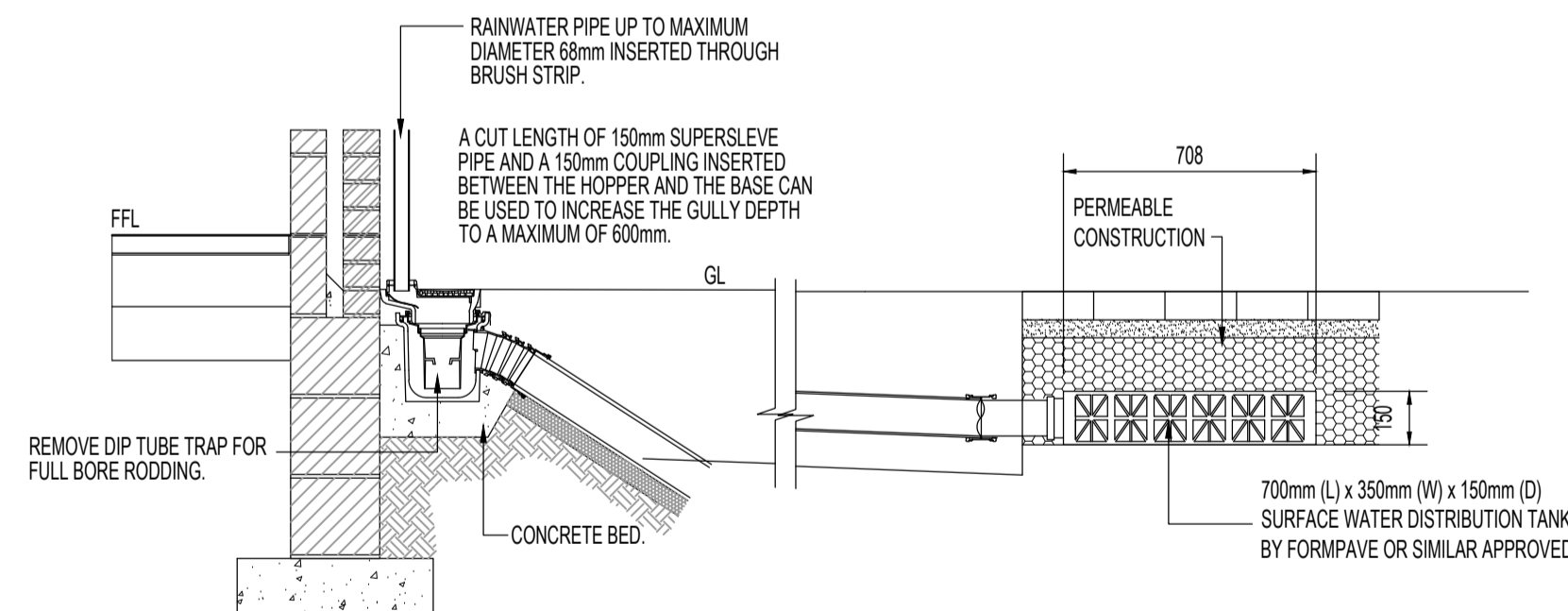
INSTALLATION

UNITS SHOULD BE BEDDED ON MINIMUM 100MM OF SEMI-DRY CONCRETE. SIT THE HEADWALL LEVEL OR WITH A SLIGHT FALL 1:50 FROM PIPE TO SPILL MOUTH. FOR FULL DETAILED INSTALLATION INSTRUCTIONS CONTACT ALTHON LTD. 01603 488700



MATERIAL: REINFORCED CONCRETE  
WEIGHT APPROXIMATELY 540kg  
ALL DIMENSIONS IN MM

**TYPICAL HEADWALL DETAIL TYPE H3C  
AS MANUFACTURED BY ALTHON LIMITED**  
Scale 1:20



**TYPICAL RAINWATER PIPE CONNECTION DETAIL IN TO  
PERMEABLE PAVING**  
SCALE 1:20

**Notes:**

1. DO NOT SCALE FROM THIS DRAWING.
2. THIS DRAWING IS TO BE READ IN CONJUNCTION WITH ALL OTHER DRAWINGS AND SPECIFICATIONS ASSOCIATED WITH THIS PROJECT.

FOR THE DISCHARGE OF PLANNING CONDITIONS 13 AND 38

Rev	Description	Drn	Chk	Date
A	FOR APPROVAL	SBR	CJM	15.03.22

**BdR**  
Civil & Structural Engineering Consultants  
The Old Engine House, Goblands Farm Business Park  
Court Lane, Hadlow, Kent, TN11 0DP  
Tel 01732 851416  
email: engineering@bdr.uk.com

Client  
CIVILS CONTRACTING LTD.

Project  
FORMER SYNGENTA WORKS,  
HAMSTEAD LANE,  
YALDING, KENT [BUSINESS PARK]

Drawing  
DRAINAGE CONSTRUCTION DETAILS  
SHEET 2 OF 2

**FOR APPROVAL**

Scale @ A1	Date	Drawn by	Checked
-	FEB22	SBR	CJM

Job No.	Drng. No.	Rev
22-0042	C10552	A