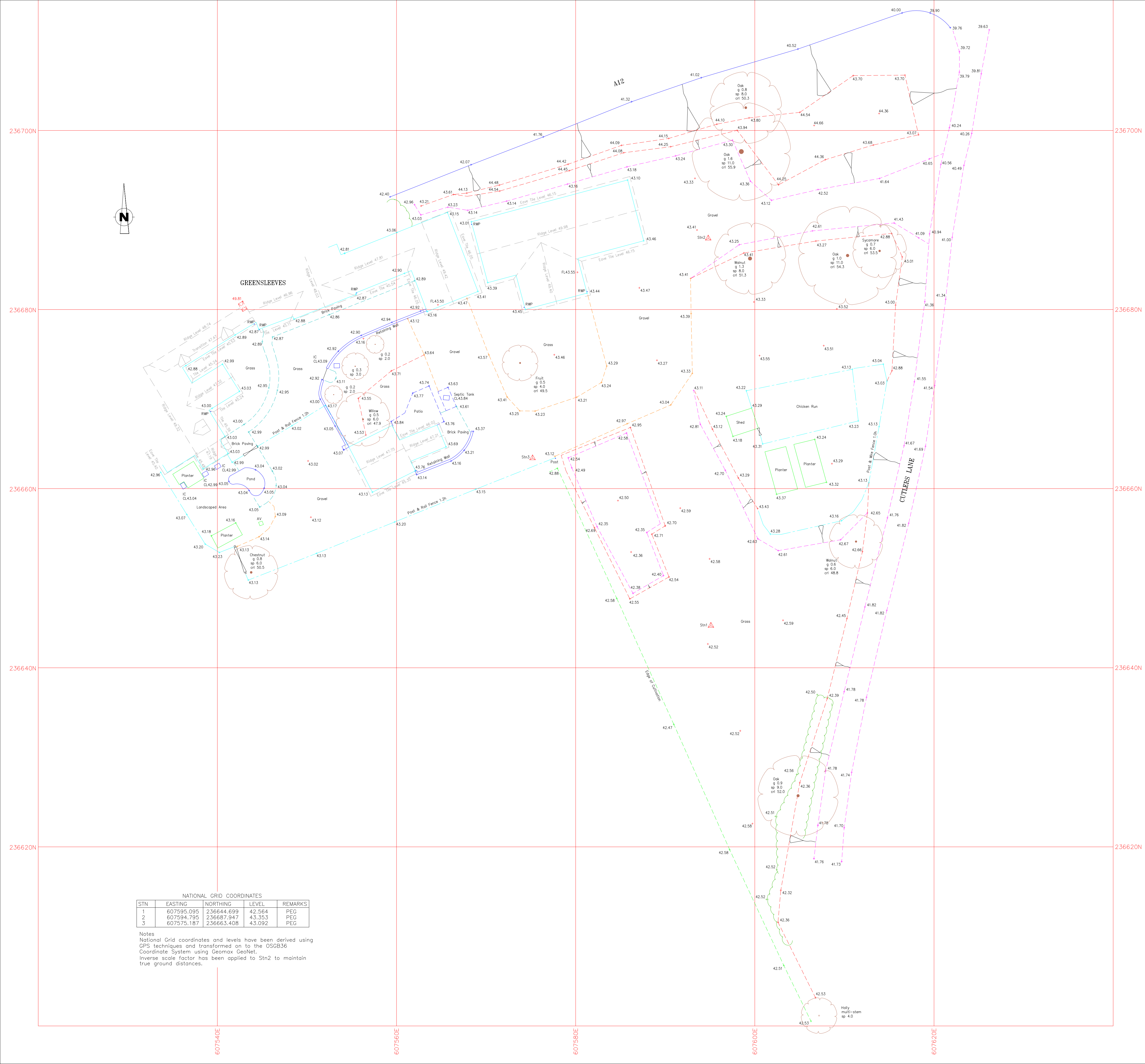


LEGEND	
A/C	Air conditioning unit
AV	Air valve
BB	Balisha beacon
BL	Bollard
BS	Bus stop
BT	British telecom
CATV	Cable TV
CCTV	Close circuit TV
CL	Cover level
CB	Control box
DC	Drainage channel
DP	Down pipe
ELP	Electricity lamp post
EP	Electricity pole
ER	Earth rod
FH	Fire hydrant
FP	Feeder post
FWS	Foul water sewer
G	Gully
GV	Gas valve
IC	Inspection cover
IL	Invert level
LB	Letter box
LP	Lamp post
KO	Kerr's outlet
MH	Manhole
MP	Marker post
RE	Rodding eye
RNB	Road name board
RP	Reflector post
RS	Road sign
RWP	Rain water pipe
SC	Stop cock
SP	Sign post
SV	Stop valve
SWS	Surface water sewer
SY	Sty
TCB	Telephone call box
TP	Telephone pole
U/C	Unknown cover
UTL	Unable to lift
VP	Vent pipe
WB	Waste bin
WC	Water cover
WM	Water meter
WO	Wash out

NOTES:
 This drawing is copyright and may not be reproduced without the permission of A & B Surveys.
 Drainage pipe sizes (where shown) have been determined from the surface and should be regarded as approximate only.
 Drainage runs between inspection covers have not been investigated or proven and should be confirmed prior to any design or construction.
 Tree species (where shown) should be treated with caution and expert identification is advised.
 Tree Dimensions are approximate and expert measurement is advised.
 g = girth sp = spread
 cri = crown level



NATIONAL GRID COORDINATES				
STN	EASTING	NORTHING	LEVEL	REMARKS
1	607595.095	236644.699	42.564	PEG
2	607594.795	236687.947	43.353	PEG
3	607575.187	236663.408	43.092	PEG

Notes
 National Grid coordinates and levels have been derived using GPS techniques and transformed on to the OSGB36 Coordinate System using Geomax GeoNet.
 Inverse scale factor has been applied to Stn2 to maintain true ground distances.

A&B SURVEYS
 12 HIGHFIELDS
 BENTLEY
 SUFFOLK
 IP25 299P
 TEL: 01473 311962
 E-mail: info@absurveys.co.uk
 web: www.absurveys.co.uk

JOB
 GREENSLEEVES, IPSWICH ROAD,
 STRATFORD ST MARY, COLCHESTER,
 CO7 6PQ.

CLIENT
 MR & MRS T EAGLE

DRAWING
 TOPOGRAPHICAL SURVEY

DRG. No. LS 6123/1
SCALE 1:200@A1
DATE DEC 2021