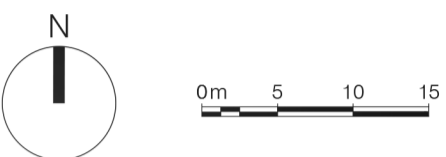


**SAFETY, HEALTH AND ENVIRONMENTAL INFORMATION**

In addition to the hazards/risks normally associated with the types of work detailed on this drawing, note the following risks and information:

- i:
- ii:
- iii:
- iv:
- v:

For information relating to Use, Cleaning and Maintenance, see the Health & Safety File  
It is assumed that all works will be carried out by a competent contractor working, where appropriate, to an approved method statement.



P1	First Issue	17-3-22	GFH	XX
Rev.	Description	Date	By	Chkd

**Wakebridge Limited**

Castle House Friar Lane Nottingham NG1 6DH  
info@wakebridge.co.uk  
01332 949011

Gotham Moor Farm  
Moor Lane, Gotham, Notts

**Site Plan as Proposed**

PROJECT	SUBJECT	PAPER	DRAWN		
1496	1:500	A1	GH		
PROJECT	DRAWN	DATE	TYPE	FILE	NUMBER
GOT	WDW	Z1	XX	DR	W - 01002
REVISION	REVISION DESCRIPTION				
D5	ISSUED FOR PLANNING				
P1	PRELIMINARY				

This document is copyright of Wakebridge Limited. If in doubt ASK. Drawing measurements shall not be obtained by scaling. Verify all dimensions prior to construction. Immediately report any discrepancies on this document to the Architect. This document shall be read in conjunction with associated models, specifications and related consultant's documents.