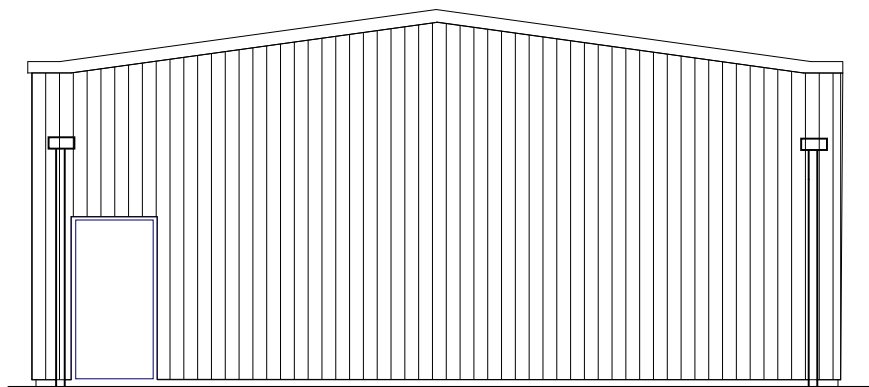
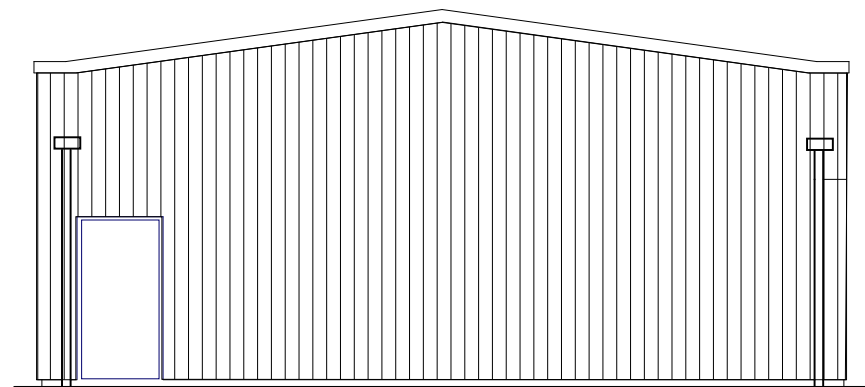


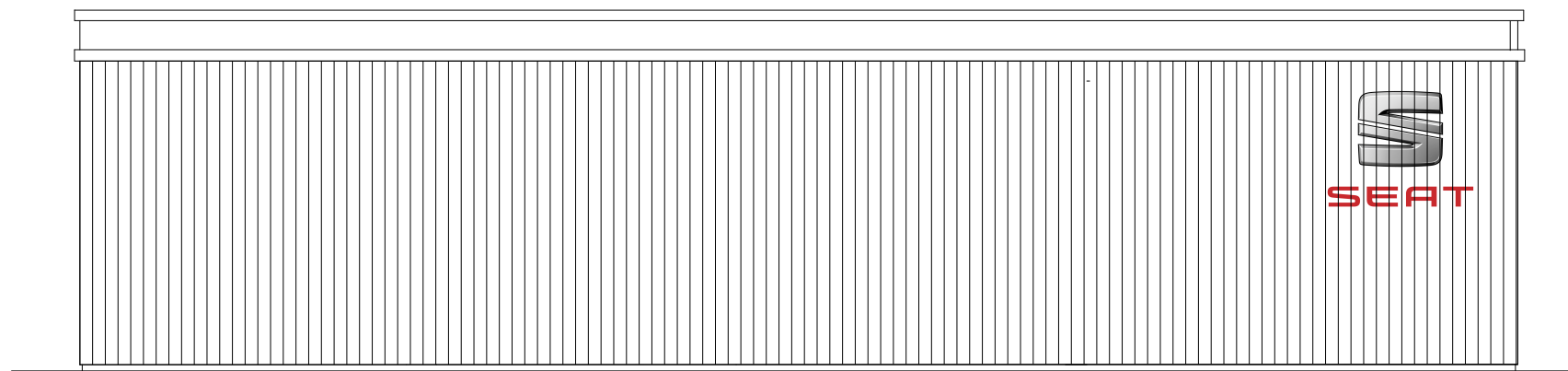
PRINCIPAL ELEVATION



SIDE ELEVATION



SIDE ELEVATION



REAR ELEVATION

External finishes:
 Walls: RAL 7016 Kingspan or similar trapezoidal cladding panels
 Roof: RAL 7016 Kingspan or similar trapezoidal cladding panels
 Pass Doors: Steel plate, RAL 7016
 Bay doors: Sectional steel, RAL 7016
 Rainwater goods: RAL 7016

OUTLINE SPECIFICATION

ROOF
 'Ward' or similar profile steel insulated sheeting panels with translucent roof light panels 3.0m long as shown all on patent zed purlins at centres to suit sheeting on steel portal frame, complete with all necessary bracings (design of all steelwork will be by Structural Engineer)

OUTER WALLS
 'Ward' or similar profile steel insulated panels on zed purlins at centres to suit sheeting on steel portal frames at 3.600m centres with 1/no. bay at 5.5m centres. (design of all steelwork will be by Structural Engineer)

PARTITIONS
 All internal partitions will be of 100mm thick concrete blockwork (all joints will be pointed)

CEILINGS
 Ceilings to store & toilet areas will be of timber joists at 450mm centres (joist size to be confirmed) with 200mm Fibreglass insulation between joists. ; Internal lining of 12.5 mm screw-fixed plasterboard with taped & filled joints. 22mm T. & G. flooring to top of joists. 22mm timber fascia to finish.

HEATING
 Heating will be gas - fired warm air heating (Powmatic or similar) Services to be provided will include

Cold water supply, hot water supply, gas supply, Electricity supply, Soil, Waste Water & Surface water drainage, Telephone & Data connection points.

FLOOR
 Floor construction will be 40mm granolithic finish on 150mm concrete on 'visqueen' heavy gauge D. P. M. on 150mm well consolidated type 1 hardcore, blinded with sand.

FOUNDATIONS
 All concrete foundations will be to the design of The Structural Engineer

DOORS
 5/no. 3.0m wide & 1/no. 5.0m wide X 2.350 high insulated industrial, electrically operated overhead doors with glazed viewing panels.
 2/no. timber framed & lined sliding doors 1000 X 2100 on sliding door track.
 2/no. 900 X 2100 solid timber pass doors on 1.5 pairs of hinges & supplied with all necessary ironmongery.
 2/no. steel faced exit doors 900 X 2100mm (insulated) with internal panic bar fitted.

rev.	amendment	by	date
B	Bay doors amended to client requirements	AP	21.03.21
A	Layout amended to client requirements	AP	

Parchitect Ltd
 a: 49 Main Street, Bothwell, Lanarkshire, G71 8ER
 t: 01698 85 4740 m: 07549 164 171
 e: alan@parchitect.co.uk

client
W. LIVINGSTONE LTD.

client's ref
 project
**PROPOSED NEW WORKSHOP
 34 NEW EDINBURGH ROAD,
 UDDINGSTON, G71 6BS**

drawing
**General arrangement drawings
 ELEVATIONS AS PROPOSED
 Sheet 2 of 2**

scale: 1:100	drawn AP	checked AP
page size: A3	Feb '22	Feb '22
job ref	drawing num	rev
177	AL(0)005	B



THIS DRAWING AND THE ACCOMPANYING DRAWINGS ARE THE DRAWINGS/ TRUE COPY OF THE DRAWINGS REFERRED TO IN THE APPLICATION TO NORTH LANARKSHIRE COUNCIL FOR PLANNING PERMISSION / BUILDING WARRANT DATED

SIGNED ON BEHALF OF W LIVINGSTONE LTD