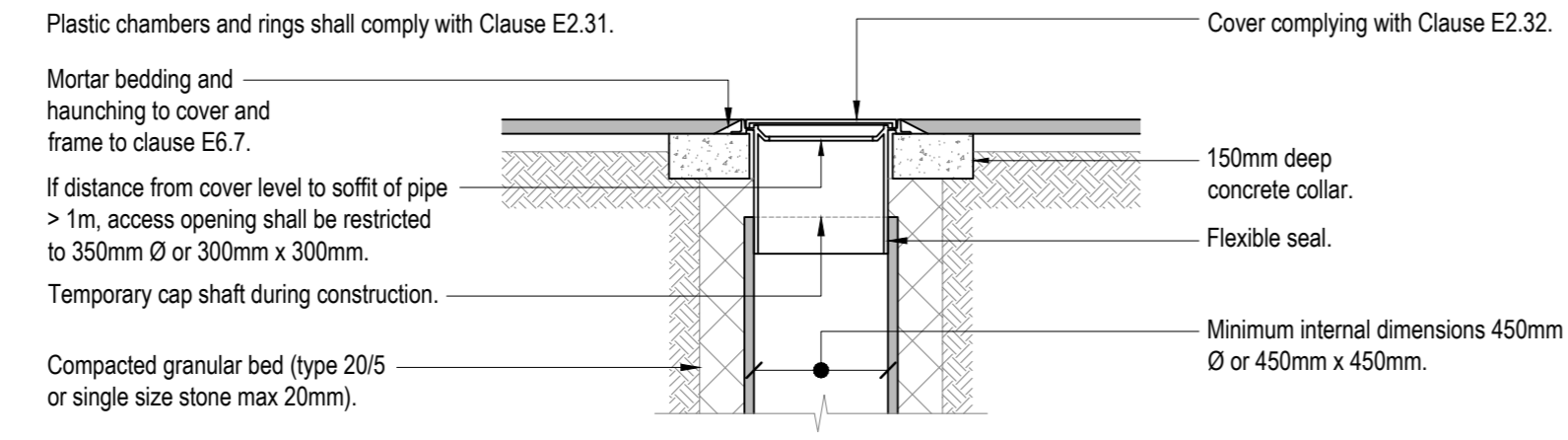
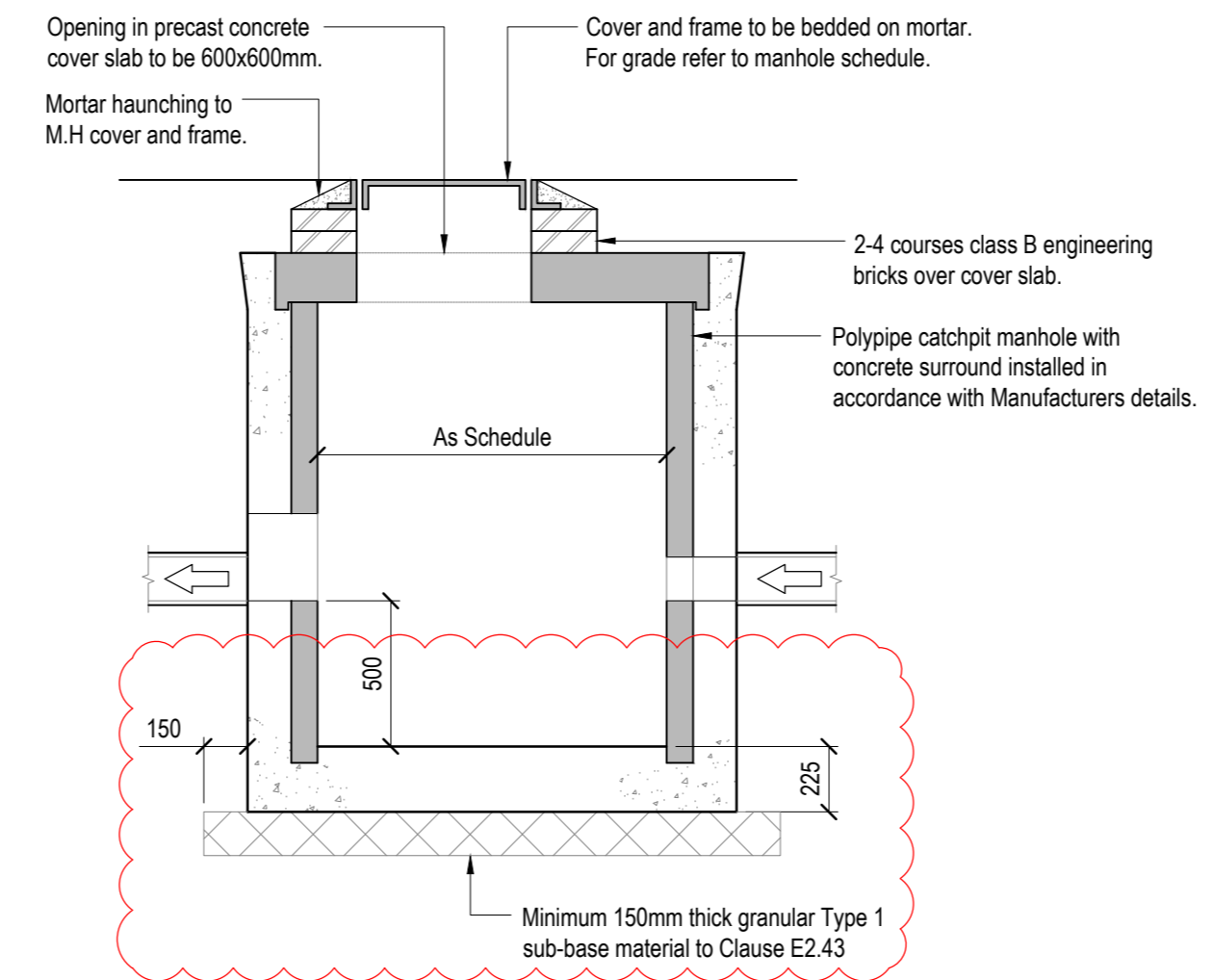
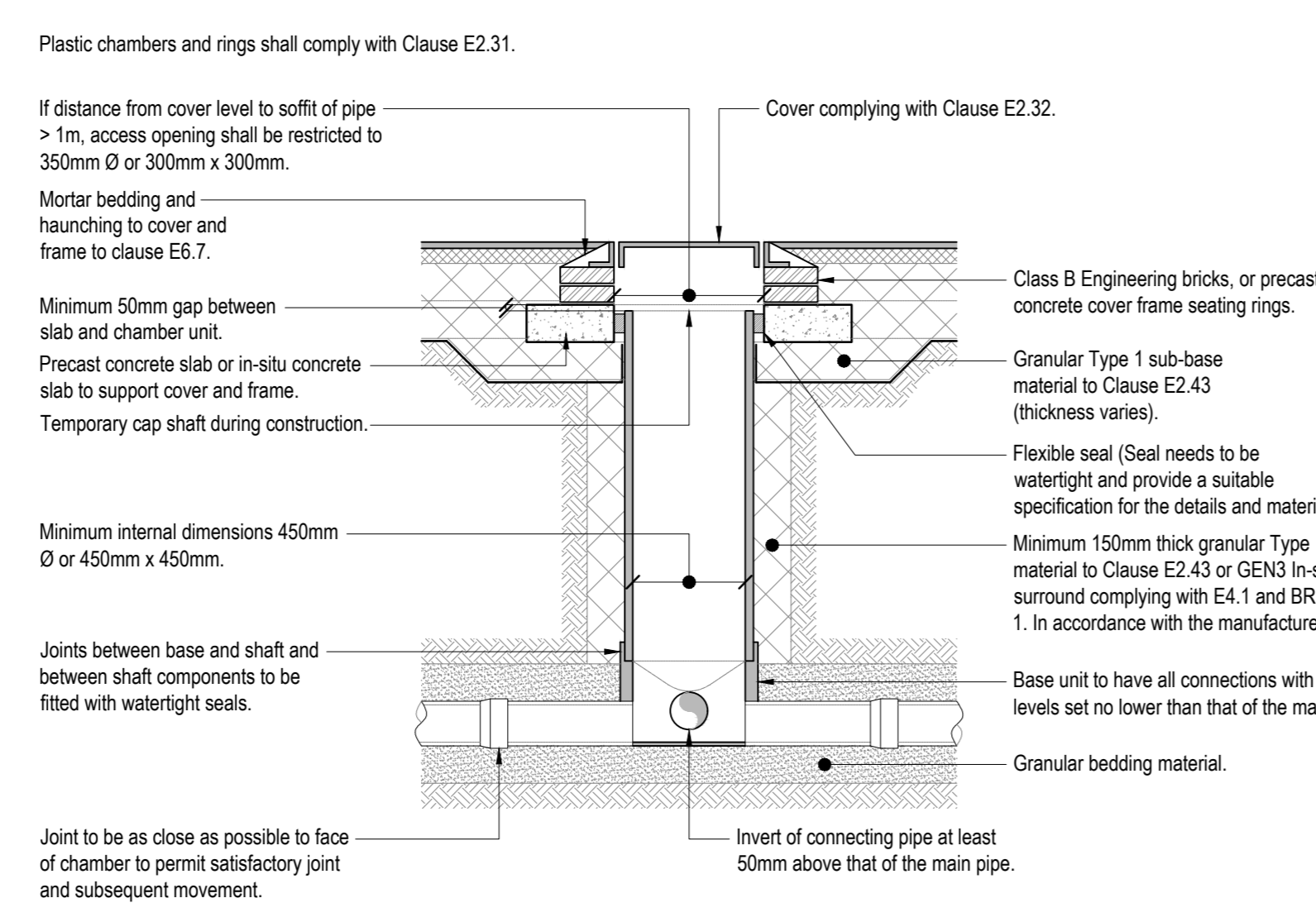


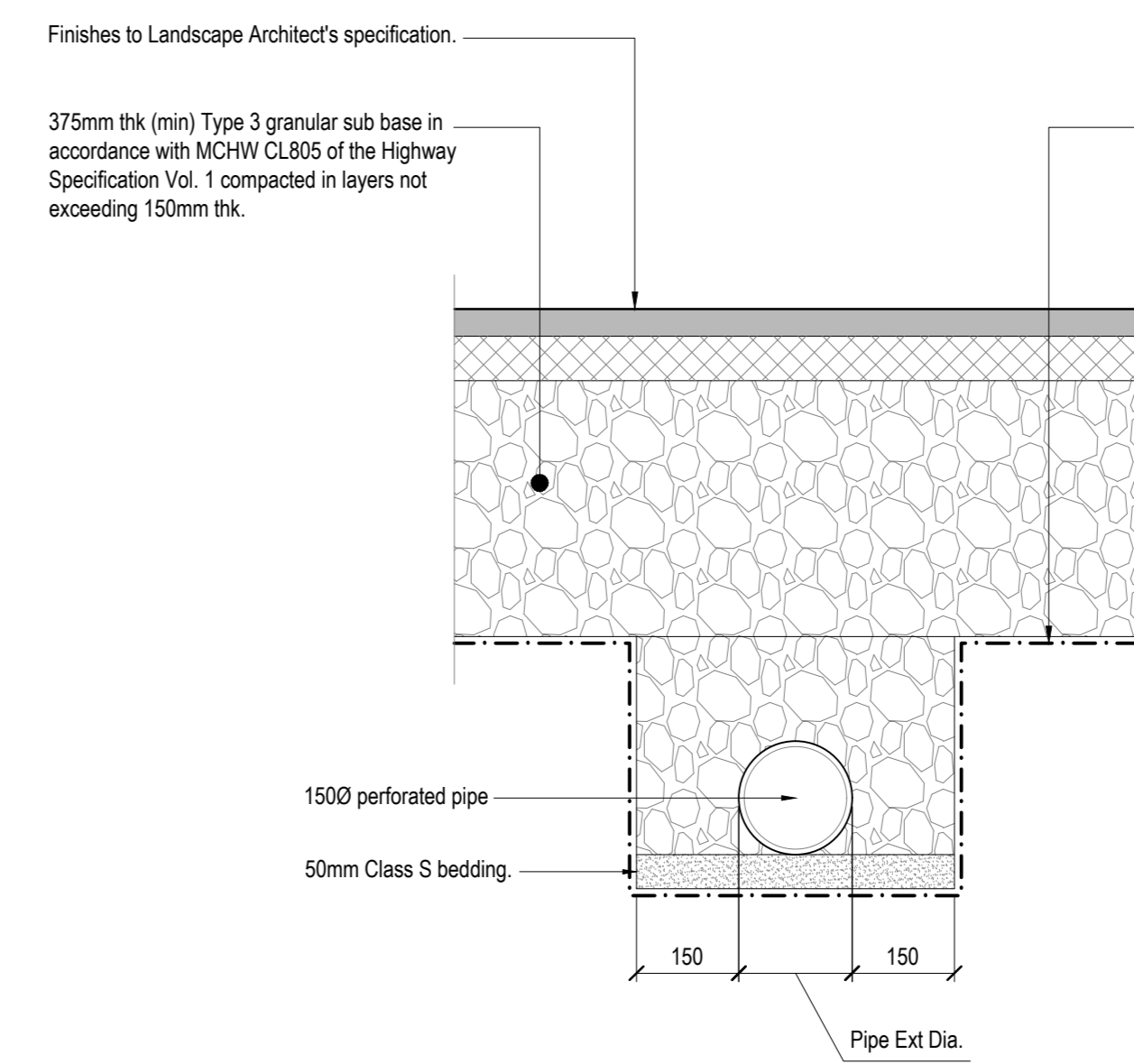
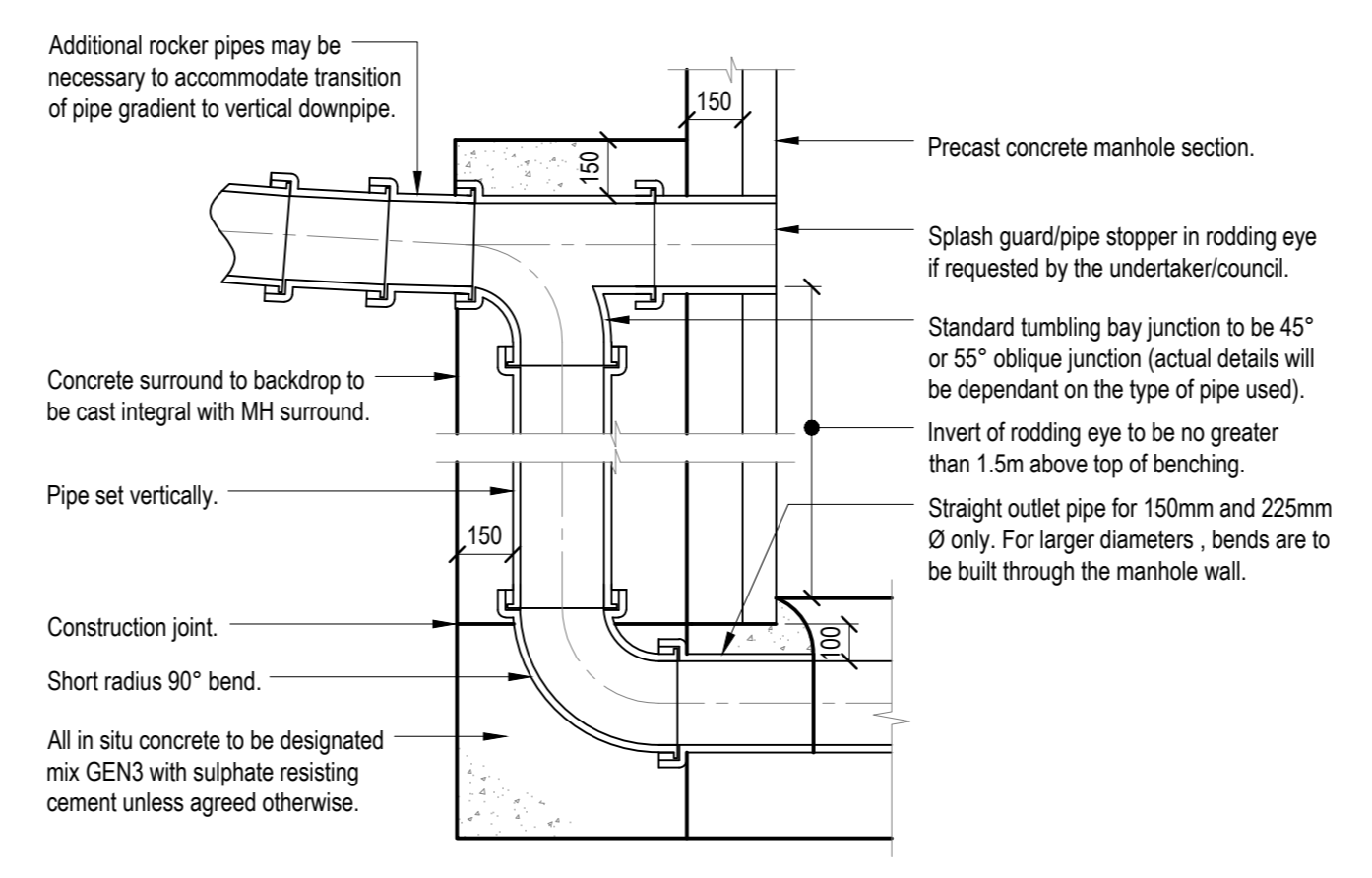
SITED IN SOFT LANDSCAPING (Non-Vehicular Loading)



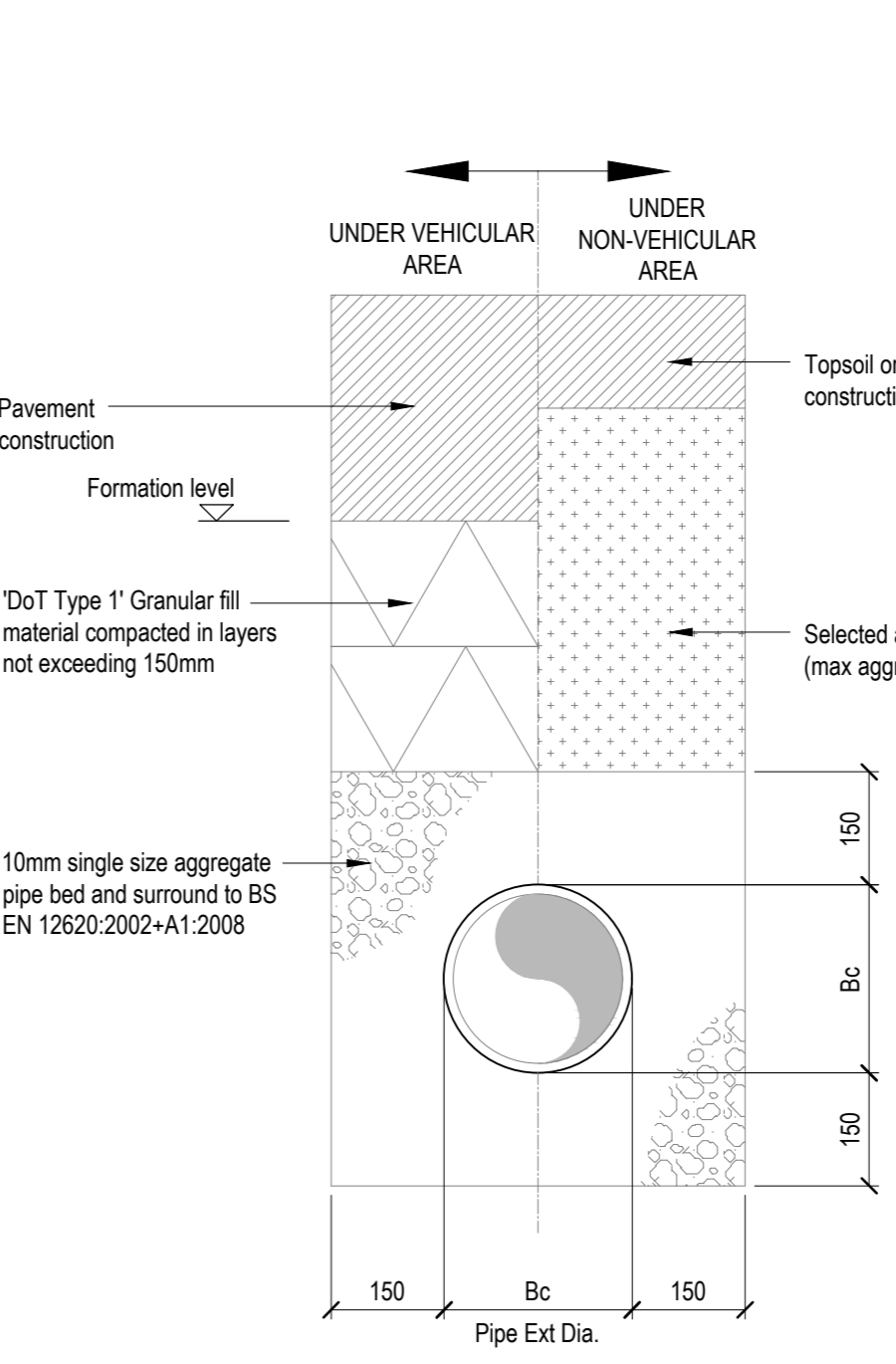
SITED IN FOOTWAYS (Non-Vehicular Loading)



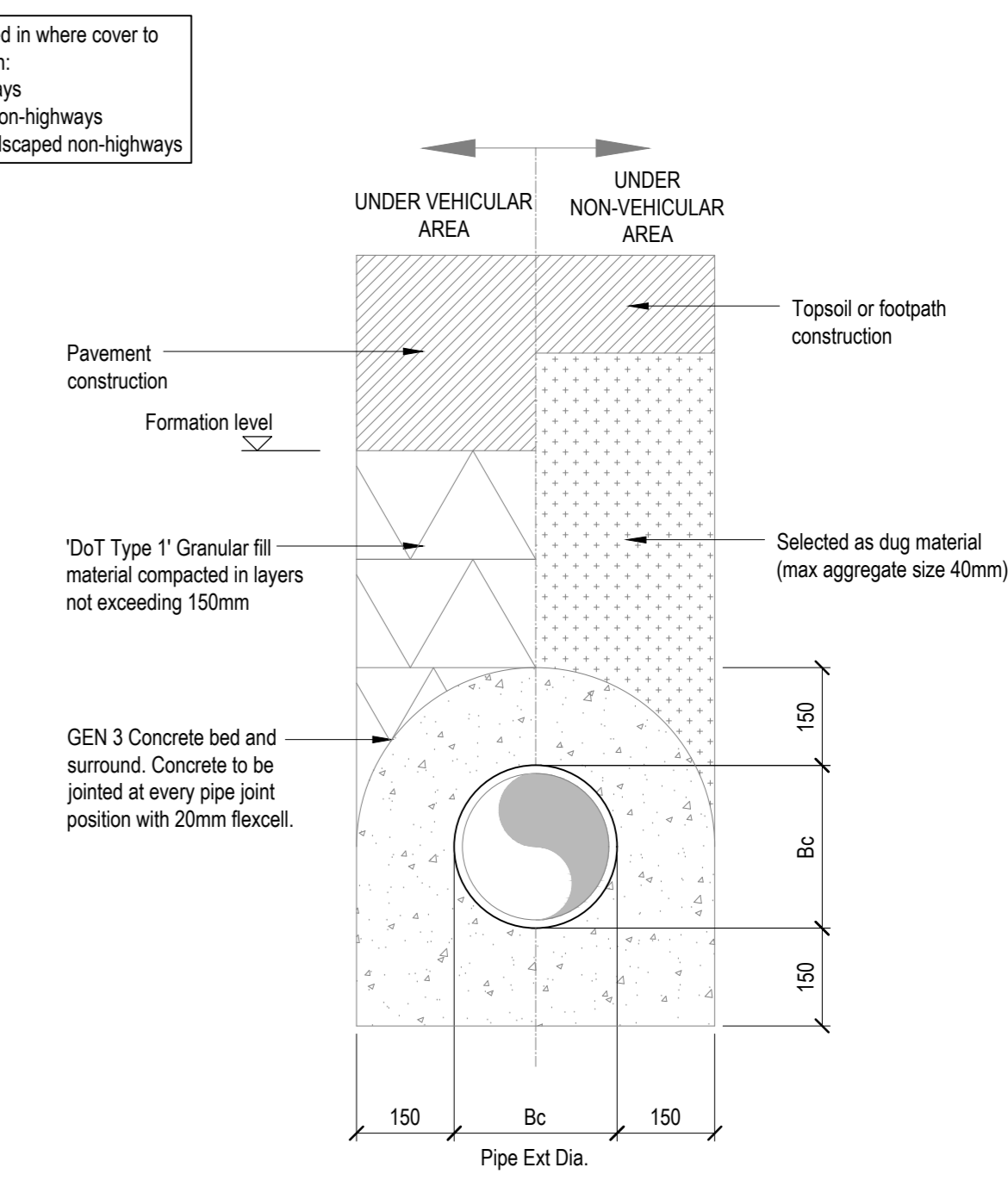
Typical External Vertical Backdrop Detail (1:20)
(WHERE THE DROP IS NOT EXCESSIVE A 45° DROP PIPE MAY BE USED)



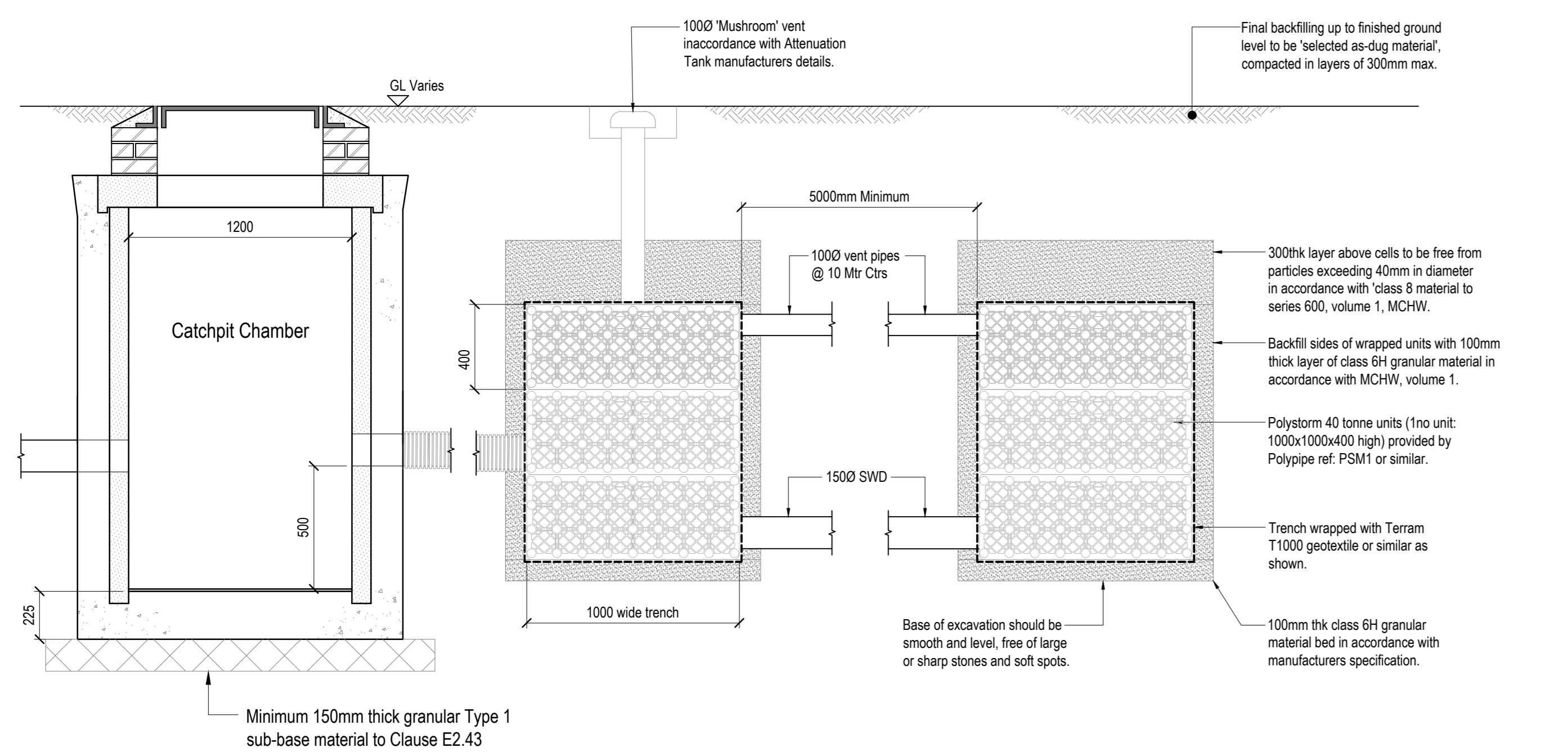
Typical Perforated Pipe Detail (1:10)



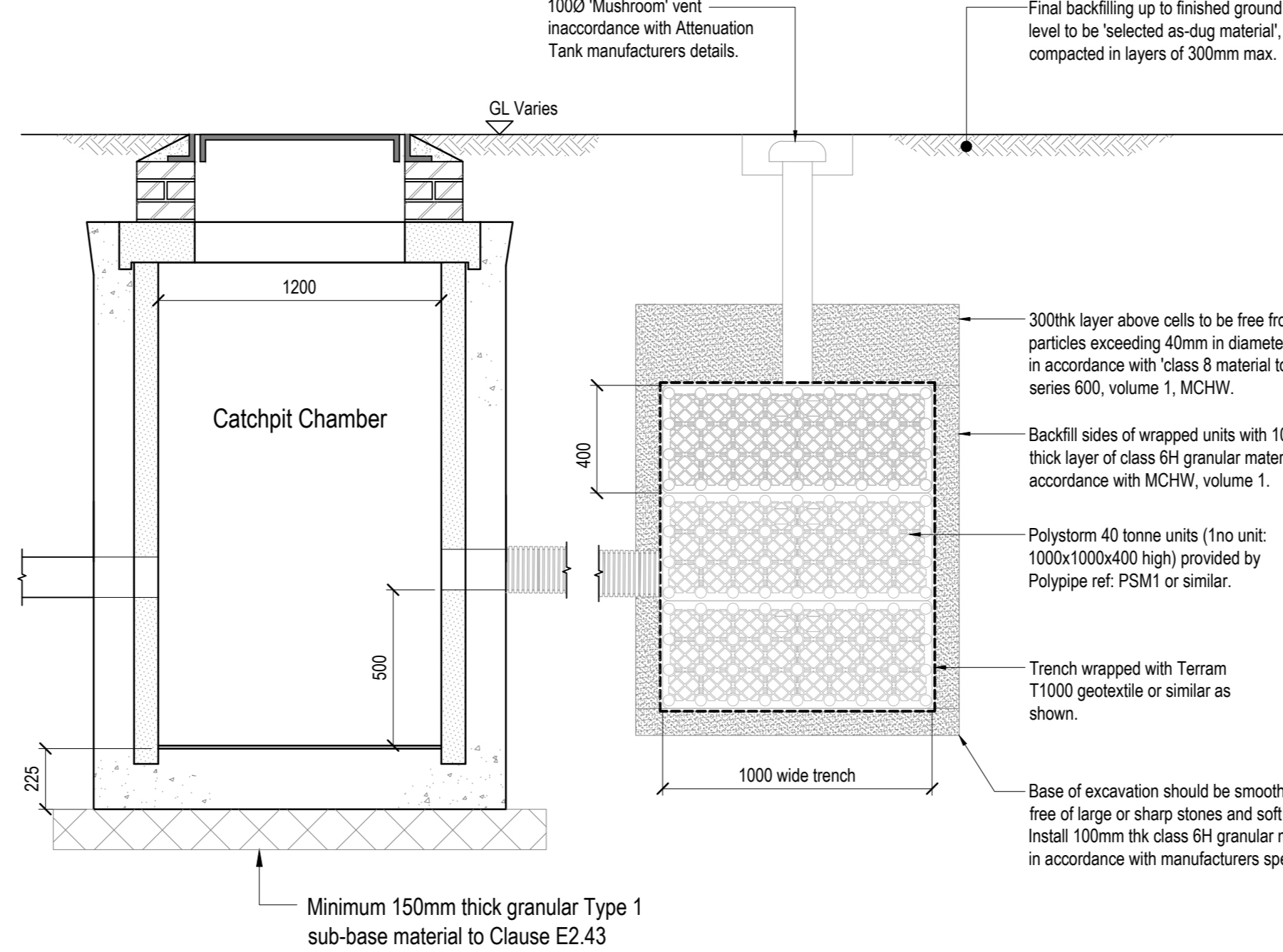
Class S Granular Pipe Bed and Surround (1:10)



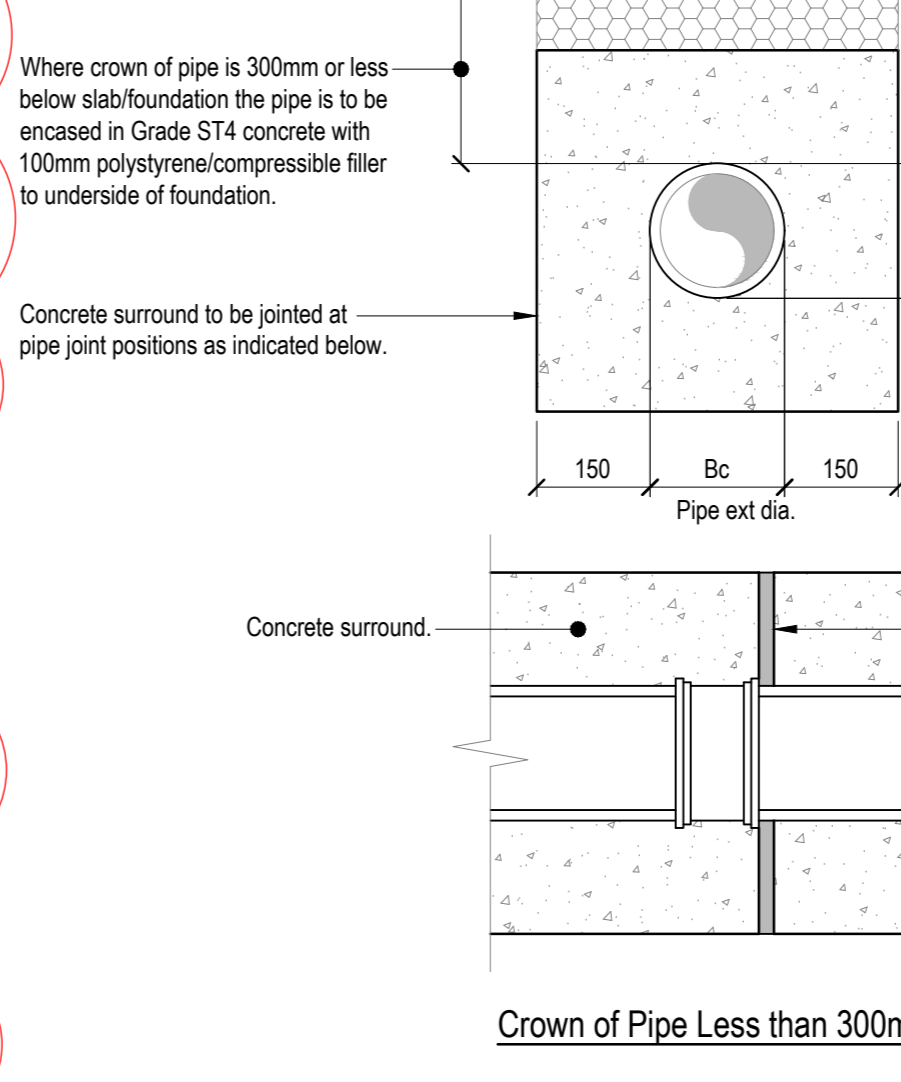
Class Z Concrete Bed and Surround (1:10)



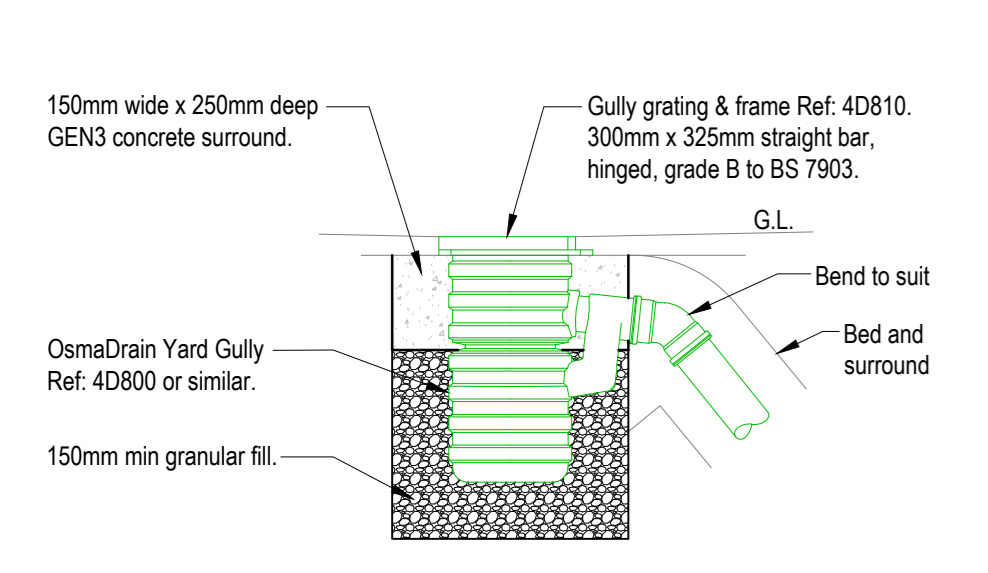
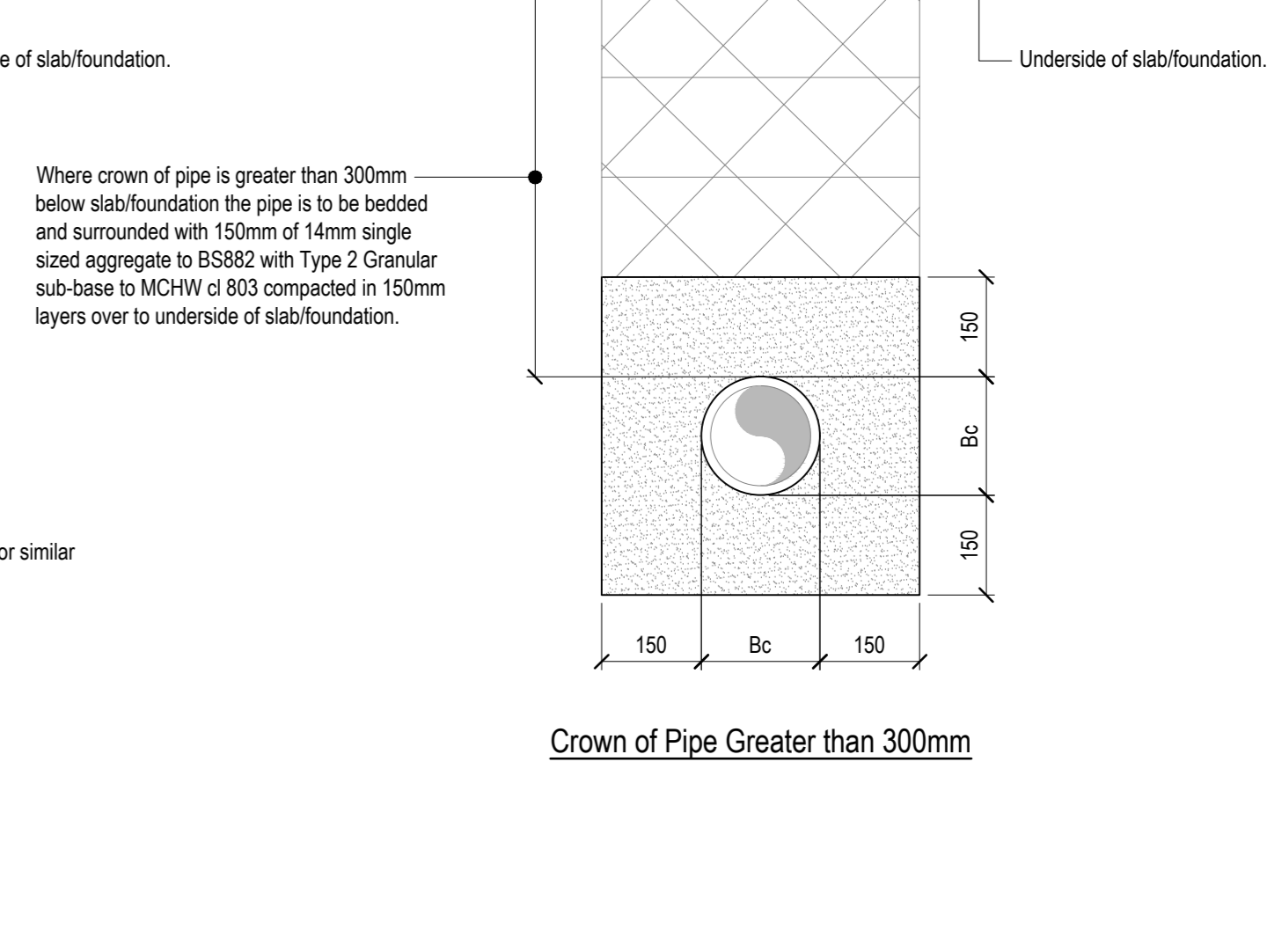
Typical Soakaway 1 Detail (1:20)



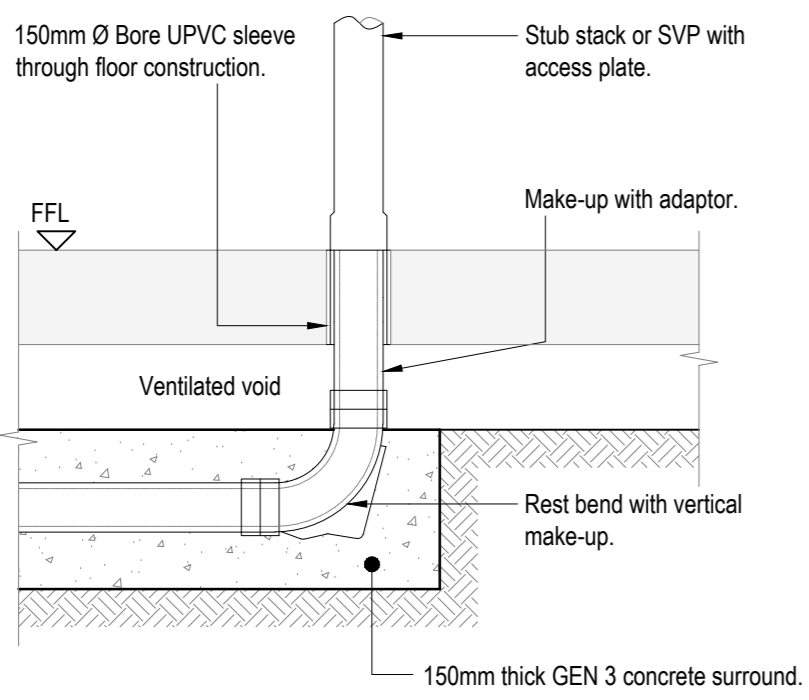
Typical Soakaway 2 & 3 Detail (1:20)



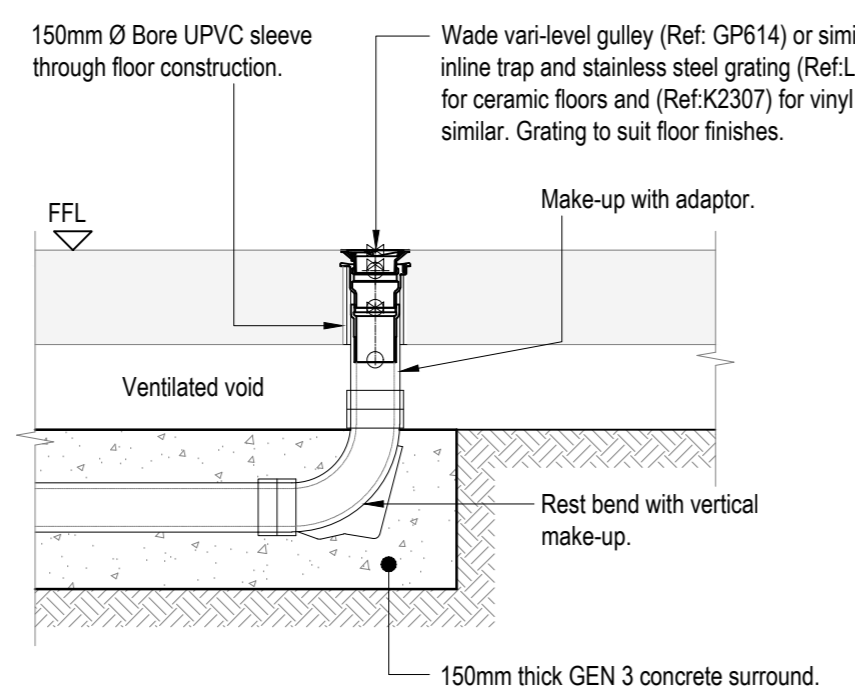
Pipe Bedding Details Under Slab/Foundation (1:10)



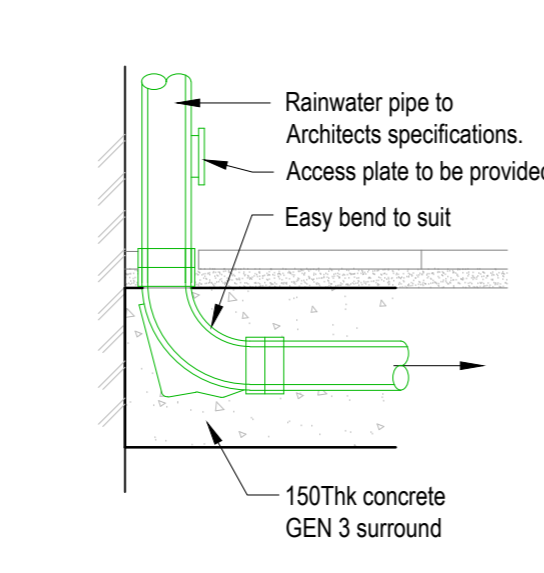
Yard Gully Detail (1:20)



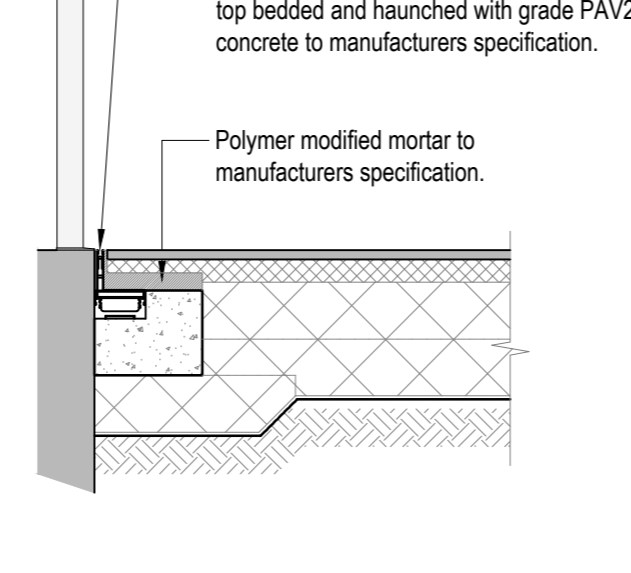
SS / SVP Detail (1:20)



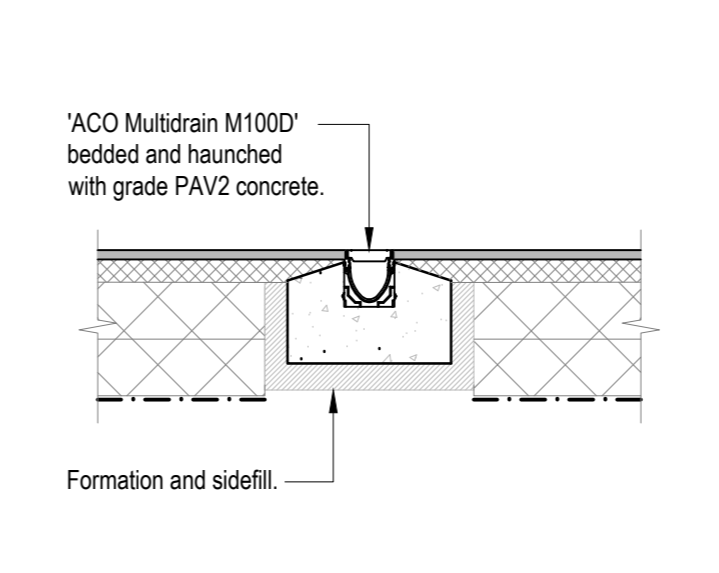
Floor Gully Detail (1:20)



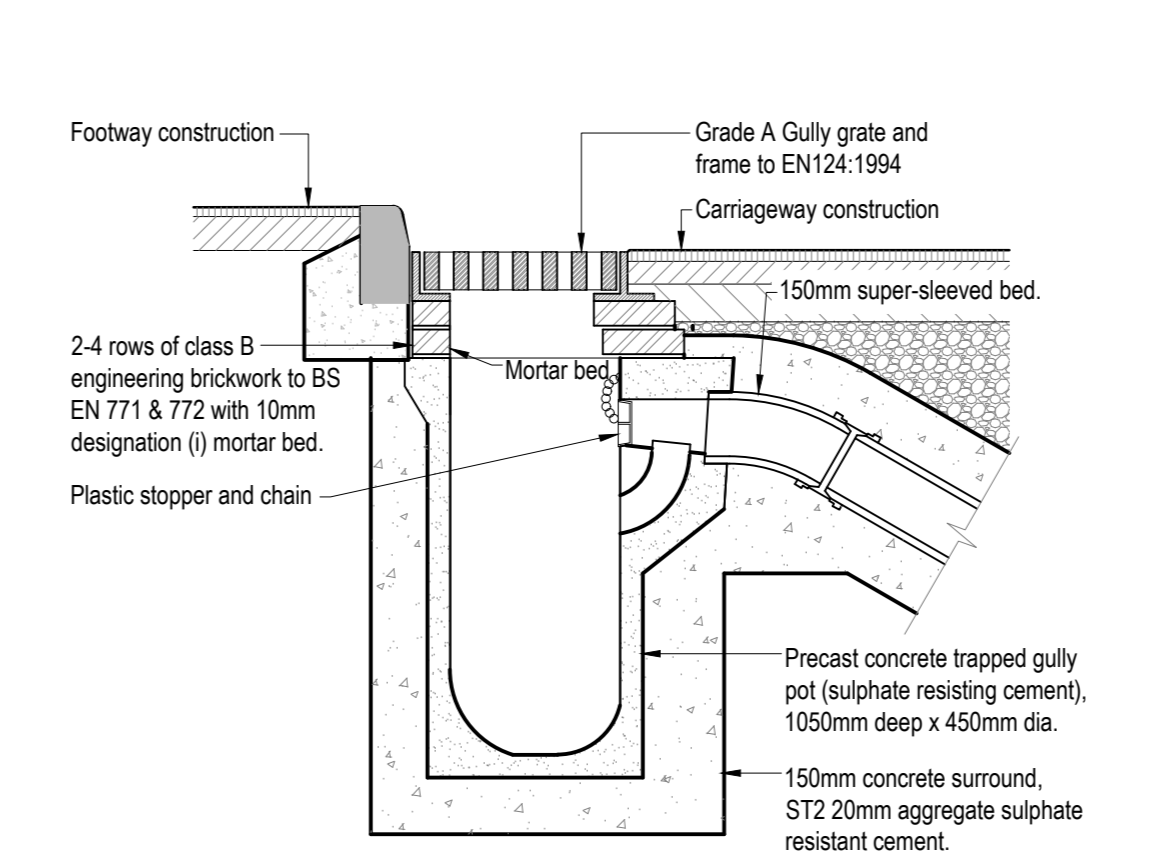
RWP Detail (1:20)



Threshold Channel Detail (1:20)



ACO Multidrain M1000 Detail (1:20)



Trapped Road Gully (1:20)

- NOTES:**
- This drawing is to be read in conjunction with all Peter Dann Consulting Engineers, Architects, MEP Engineers and Specialists drawings along with all relevant specifications.
 - All gridlines, building lines, etc. are to be set out in accordance with the relevant Architects drawings. Any discrepancies between the information given by the Engineer and that provided by others must be referred to the Architect before work proceeds.
 - Dimensions are NOT to be scaled from this drawing. If in doubt ask. Dimensions marked * are subject to confirmation by site measurement before construction commences.
 - All proprietary fittings shall be installed in accordance with the manufacturer's recommendations.
 - The Contractor shall comply with the health and safety requirements as set out by the CDM Regulations, THE HEALTH AND SAFETY EXECUTIVE.
 - All works are to be undertaken in accordance with the Building Regulations and latest relevant British Standards.
 - All construction products are to be CE marked in accordance with the Construction Products Regulation (EU) No. 305/2011.

DATE	DESCRIPTION
10/03/2018	Issue for construction
10/03/2018	Final issue
10/03/2018	Final issue
10/03/2018	Final issue

AMENDMENTS

peter dann consulting engineers

peter dann limited | newton house
cambridge road | barton | cambridge | CB32 7WJ
t: 01223 264808 www.peterdann.com info@peterdann.com

JOB TITLE
Duxford Primary School

DRAWING TITLE
Proposed Drainage Details

DATE	DRAWN	CHECKED	SCALE
Jun '21	SM	JB	As Shown

DRAWING STATUS
PRELIMINARY

POL/JOH REF
10-9757

CLIENT
KIER

PROJECT/PROGRAM/ISSUE/TYPE/TYPE NUMBER
DPS-PDL-XX-ZZ-DR-C-2300

REV
03/10/2020

REV
P04 S1