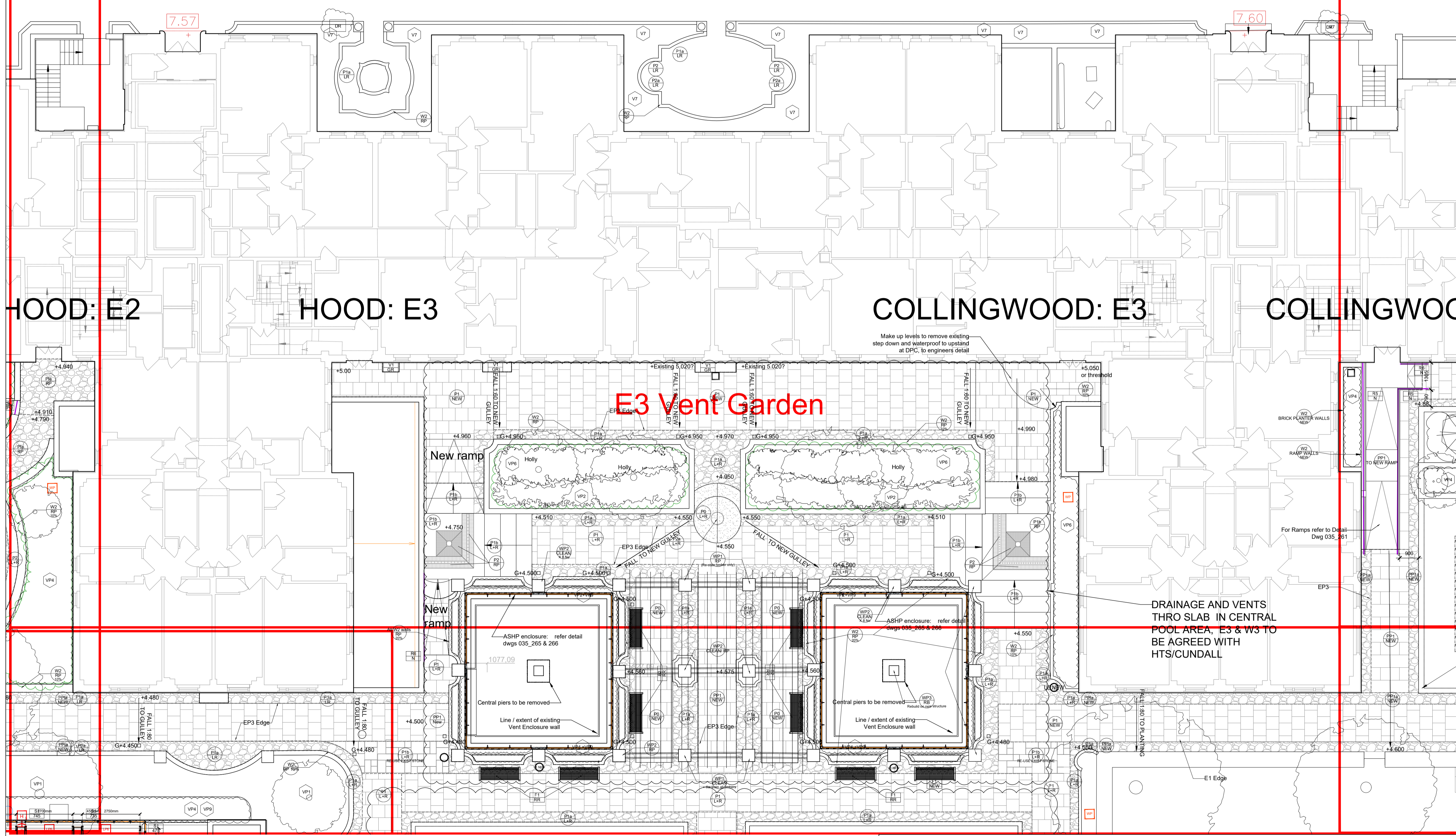


Dwg No 035\_111: Existing Landscape Survey  
 Dwg No 035\_211: Proposed GA / Hardworks  
 Dwg No 035\_311: Proposed Softworks / Planting

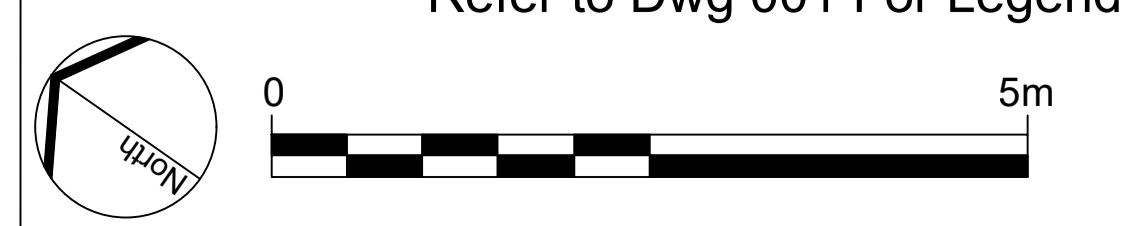
DOLPHIN SQUARE EAST SIDE



- LEGEND: GA PROPOSED - ALL MAIN GARDENS, EXCEPT MOROCCAN ON 216**
- Paving**
- Material
  - Treatment Refs = L+R/RP/NEW
  - York Stone Paving, Lift & Relay
  - New PC Paving Slabs, 600 x 600, Cost for 3 types: 'Hardscape 'New Grange' Silver Grey (63mm) & Kellen Lavaro 'Cerro' and non Cerro (80mm thick)
  - Existing PC Paving Slabs, 600 x 600mm, Clean, Lift and re-lay
  - Crazy Paving: New to match PP1, new EP3 metal edging to boundary with PP1 paving.
  - Crazy Paving: Existing lift and Relay, New EP3 metal edging to boundary with P1 /PP1 pavings
  - Original Rectilinear, Random Detail Paving, Lift clean and re-lay.
  - Original - Red brick paving: see treatment refs
  - Original - Tile detail in paving; Lift and relay where uneven/broken. (50%)
  - New glazed, blue tiles to interior of central pool and in Moroccan Garden
  - SURFACE to E + W carriageways IN ABEYANCE
  - Existing Concrete paving to East & West footpaths, IN ABEYANCE
  - Resin Bound gravel, colour Natural.
- Power/Watering Point**
- Pop up power supply, TBC if required.
  - Irrigation point, 12 No. Sped standpipe, lockable. Supply to be ascertained, To M&E details.
- Walls & Piers**
- Material Ref: W1 etc**
- Treatment Refs**
- Percentage requiring works (contained within boundary).
- Key to Treatment Refs =**
- RB: Rebuild using existing materials
  - RP: Reprint clean all (+ note % shown below)
  - NEW: Replacement material, laid on new bed
  - Existing brick planter wall restored as per treatment key ref.
  - Cotswold Stone wall with PC conc coping - retained & refurb or New F20/110
  - Existing Cotswold Stone Wall with York stone coping
  - Central piers to E3/W3 vent gardens - REMOVE FOR INSTALLATION OF ASHP PLANT IN CARPARK.
  - Outer piers to E3/W3 vent gardens, to be restored following installation of ASHP Plant, in basement.
- Key to Treatment Refs =**
- L+R: Lift existing, Clean & Relay
  - RP: Clean & Reprint (RP to % shown)
  - NEW: Replacement material, laid on new bed
- Edging**
- EP1 50 x 150 PC 'Conservation' edge
  - Kinley Systems 8.5mm x 150mm AluExcel aluminium edging
  - Kinley Systems 5mm x 100mm AluExcel alum edging between P1 to crazy paving/PP1 slabs
  - Kinley Fort edging to Moroccan Garden by Kinley Systems with PP1 paving.
  - Kinley Systems 6mm x 400 (250mm HI AGL) High grade bespoke steel edging, PPC, colour TBC
  - Kinley PPC steel to rear E3 +W3 BEDS 450mm height above FFL
- Ums: RF=REFURBISHED, N=NEW, cast from originals.**
- Refer to schedule for images of types
  - U1: Bespoke concrete 1930s Type 1, New / refurbished nos. TBC
  - U2: Original Bespoke concrete 1930s Type 2, New / refurbished nos. TBC
  - U3: Original Bespoke concrete spheres Type 3, New / refurbished nos. TBC
  - U4: Original Bespoke concrete 1930s Type 4, New / refurbished nos. TBC
  - U5: Original Bespoke concrete 1930s Type 5, New / refurbished nos. TBC
  - U6: Original Bespoke concrete 1930s Type 6, New / refurbished nos. TBC
- Rails**
- Treatment ref: RF=Retain and refurbish, N=New
  - Existing decorative ironwork
  - Railed panel 1100mm height
  - Railed panel 750mm height above low brick wall
  - Handrail with stanchions to E4 + W4 ramps
  - Vertical railed gate refurb - adjacent Drake + Rolsigh
  - Quarter-circle M5 panel in E2: To be refurbished
  - Furniture Type
  - Treatment ref: RF=Retain and refurbish, N=New to match existing
  - Bench: Replica Lutvyns Bench 1.8m
  - Replica Lutvyns Bench 2m
  - Traditional timber Bench with armrest & back 1.8m timber bench: BARFLEUR 'SEGDWICK' IN FSC Oak, By Solid Oak Furniture
  - New curved timber bench to fit radius, in W4 Garden. Adapted 'Hardwick' by Solid Oak Furniture, 450 HI.
  - New boulders to match existing

- Notes**
- Refer to Dwg 035\_001 for legend for all Dwgs
  - For Survey Refer 035\_100 series.
  - Refer to Dwgs 035\_200 series for General Arrangement (GAs)
  - Refer to 250 series for Moroccan Garden details and 260 series for remainder of recessed gardens.
  - For Softworks & Planting refer 300 series
  - For Tree Survey Refer TCP1 & TC2.
  - For proposed tree removals refer Tree Removals Dwg TR1, TR2, and Schedule TR3
  - For all lighting, refer to Design by Light drawings.
  - All drainage coordination to follow.
  - Potential geo-stabilisation in E1 + W1 gardens to be confirmed.
  - All coordination of vent enclosures and vent grilles (except main ASHP encls in E3 & W3) to be added once confirmed with Cundall.
  - All structural engineering/fixings, & loading to barriers is to be CDP. ie:
    - perimeter screens, parapet walls
    - fixing of railings, barriers & balustrades
    - filling minor voids in slab (former vents) in Moroccan (Dwg 216)
    - pergola fixings (in Dwg 216)
    - All sub-bases

Refer to Dwg 001 For Legend



<b>REVISION</b> A: First Issue: 18.06.21 B: Draft RIBA 4: 14.09.21 C: RIBA 4: 14.10.21 D: RIBA 4: 25.10.21 Notes updated E: 08.11.21 RIBA 4 Addendum Issue. Smoke vents added where clouded F: 16.11.21 PLANNING ISSUE	<b>PROJECT</b> Dolphin Square  <b>DRAWING</b> Proposed Landscape - 2 of 9 E3 Vent Gardens  <b>DRAWING NO.</b> 035_211	<b>CLIENT</b> AXA - IM  <b>SCALE</b> 1:100 @A1  <b>DRAWN</b> SP	 e: sally@sp-la.co.uk t: +44 (0) 7905 960155
--	--	---	--