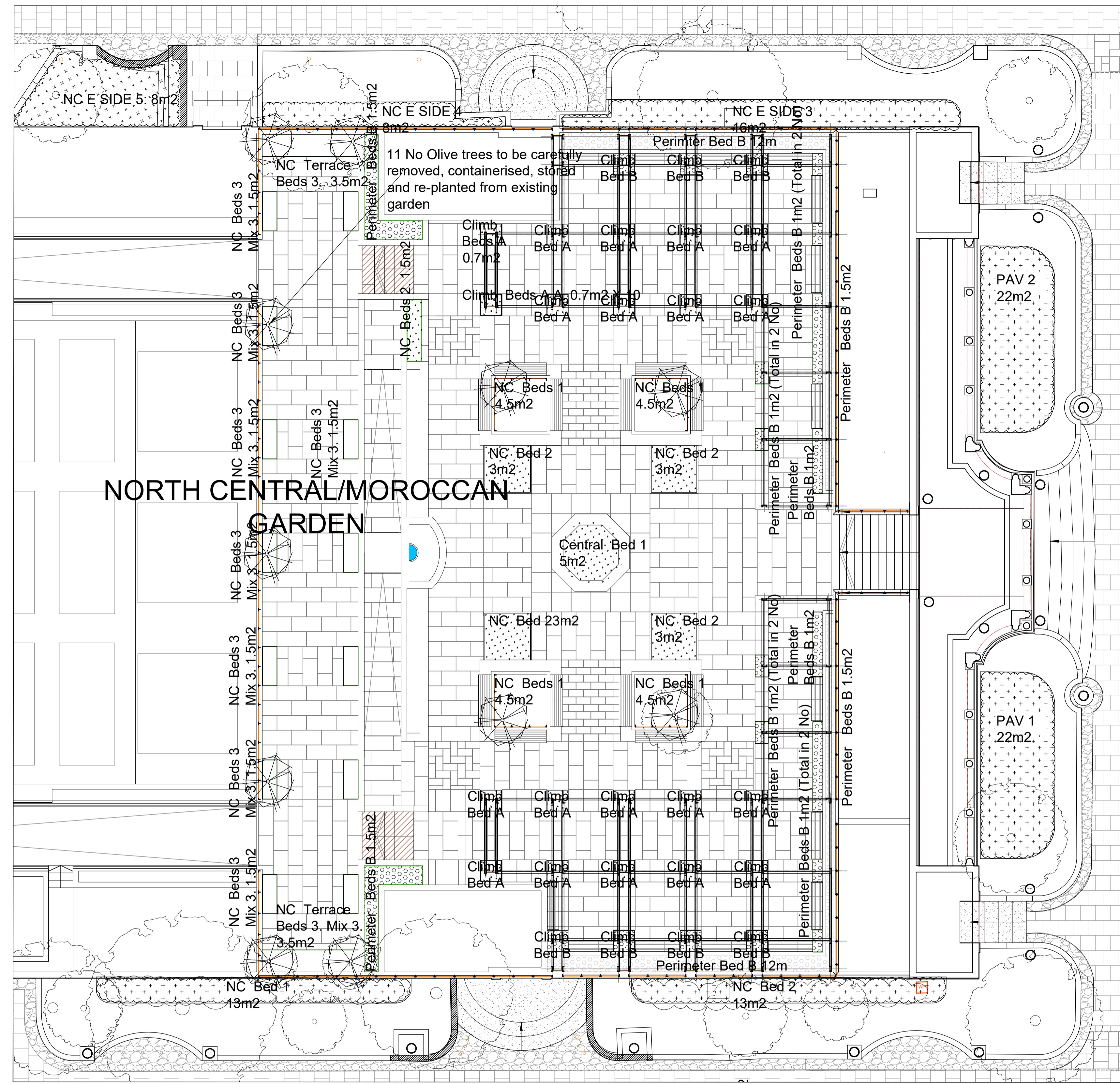


CENTRAL GARDENS: Mix Description				Pot Size	%	Density / m2	Bed 1 -	Bed 2	Bed 3	Bed 4	Bed 5 & 6		
Moroccan Garden North Central (NC)													
Moroccan Garden North Central (NC)				pot size	%	Density / m2	Central 1	NC Bed 1	NC Bed 2	NC Terrace 3	Perimeter B	Climb A 20 x .7m	Climb B 8 x .7m
Central Bed Mix 1							5.0	18	12	26	34	14	5
	Agave americana		15	20	1	1							
	Agave americana 'Mediopicta Alba'		1	20	3	3							
	Koerlia maritima		1	10	12	4							
	Limonium gmeliniae 'Dazzle Rocks'		1	15	5	6							
	Opuntia (prickly pear)		1	5	5	1							
	Euphorbia myrsinites		1	10	12	6							
	Festuca glauca 'Elijah Blue'		1	20	12	12							
Total % per bed						100							
North Cent Beds 1							5.0	18	12				
	Asphodeline liburnica		1	10	7	13							
	Asphodeline lutea		1	5	7	6							
	Erigeron karvinskianus		0.5	5	12	11							
	Festuca glauca 'Elijah Blue'		0.5	12	12	26							
	Iris 'Deep Black' & Iris 'Panther' / Iris Sinister Desire		2	8	7	10							
	Geranium renardii		1	10	9	16							
	Koerlia maritima		1	12	12	26							
	Limonium gmeliniae 'Dazzle Rocks'		1	10	12	22							
	Eryngium bourgatii		1	8	7	10							
	Pennisetum alopecuroides 'Hameln'		1	5	7	6							
	Pennisetum x advena 'Rubrum'		1	5	7	6							
	Helianthemum 'The Bride'		2	10	7	13							
Total % per bed						100							
NC Central Beds 2									NC Bed 2				
	Euphorbia myrsinites		1	10	15				18				
	Aeonium arboreum 'Zwartkop' - Black Tree Aeonium		1	5	7				4				
	Aeonium tabuliforme		1	5	7				4				
	Artemisia 'Powys Castle'		1	10	5				6				
	Asphodeline liburnica		2	10	7				8				
	Lavandula 'Hidcote'		1	10	9				11				
	Limonium 'Blue Diamond'		1	10	9				11				
	Limonium gmeliniae 'Dazzle Rocks'		2	10	9				11				
	Rosmarinus prostratus		2	10	7				8				
	Erigeron karvinskianus		0.5	10	9				11				
	Koerlia maritima		1	10	12				14				
Total % per bed						100							
Bulbs Overlay to 20% of bed area													
	Triteleia 'Queen Fabiola' (Bulb.) blue flowers	bulb	25	100					113				
	Triteleia 'Foxy' (Bulb.) white & blueish flowers	bulb	25	100					113				
	Agapanthus 'Peter Pan'	2	25	3					14				
	Agapanthus campanulatus 'Cobalt Blue'	2	25	3					14				
Total % per bed						100							
Intermediate Terrace Mix													
	Helianthemum 'The Bride'	2	20	12					26				
	Agapanthus 'Twister'	2	15	5					62				
	Lavandula 'Hidcote' (herb)	2	20	7					20				
	Rosmarinus officinalis 'Miss Jessopp's Upright' (herb)	2	20	7					36				
	Stipa tenuissima	2	10	9					36				
	Koerlia maritima	1	15	12					23				
	ALLIUM Purple Sensation	bulb	50	5					47				
Total % per bed						150							
Perimeter Mix													
	Helianthemum 'The Bride'	1	15	12					34				
	Perovskia 'Little Spire'	1	15	5					61				
	Agapanthus 'Poppin Purple'	2	5	5					26				
	Agapanthus campanulatus 'Cobalt Blue'	2	5	5					9				
	Helichrysum italicum (herb)	1	10	7					9				
	Geranium himalayense 'Gravetye'	1	10	9					24				
	Rosmarinus 'Severn Seas'	2	10	7					31				
	Tulbaghia 'Hoyland Dark Beauty'	1	5	7					24				
	Stachys byzantina Silver carpet	1	10	12					12				
	Schizostylis coccinea	2	15	7					41				
Total % per bed						100							
Climbers A													
	Passiflora caerulea 'Clear Sky'	3	20	2					14				
	Clematis Pistachio	3	20	1					6				
	Jasminum officinale 'Inverleith'	10	20	1					3				
	Vitis Brandt	5	20	1					3				
	Rosa spp - white thornless - tbc	5	20	1					3				
	Clematis BLUE RIVER Zoblueriver blue june-Sept	3	20	1					3				
Climbers A - GROUND COVER													
	Koerlia maritima	1	50	12					84				
	Rosmarinus Severn Seas	4	50	5					35				
	ALLIUM Purple Sensation	bulb	50	5					35				
Total per bed						120							
Climbers B													
	Trachelospermum jasminoides	5	25	2					2				
	Jasminum officinale 'Inverleith'	5	25	2					2				
	Clematis Maria Cornelia	3	25	2					2				
	Clematis Polish Spirit	3	25	2					2				
Climbers B - GROUND COVER													
	Geranium renardii	1	100	5					14				
Pots													
	Ficus (fig) 'Little Miss Figgy' (PBR)	5							8				
	Marjoram officinale	1							24				
NC E 1-2 & W 3-5 (GROUND LEVEL - E & W SIDES ADJACENT TO ROOF GARDEN)													
		pot size	%	Density / m2	NC1	NC2	NC3	NC4	NC5				
WEST SIDE													
	NCW1 & NCW2				35	35	35	35	35	35	m/2		
	Rosa 'Kent' (white groundcover at edges)	2	25	3					26				
	Schizostylis coccinea 'Major'	1	30	3					32				
	Polygonum amplexicaulis 'Alba'	1	30	3					32				
	Sarcococca humilis	1	10										
	Geranium renardii (edging)	1	15	9					47				
	Bergenia 'Silberlicht'	1	20	12					84				
Total per bed						130							
	NCE1, 2 & 3								21		21		
	Rosa 'Gwent' (yellow groundcover at edges)	2	20	3					16		16		
	Acanthus spinosa	1	15	3					21		21		
	Polygonum amplexicaulis 'Alba'	1	20	3					21		21		
	Sarcococca humilis	1	10										
	Geranium renardii (edging)	1	15	9					47		47		
	Bergenia 'Silberlicht'	1	20	12					84		84		



Pavilion Beds (South, Facing Fountain)				pot size	%	Density / m2	Pav 1	Pav 2
Herbaceous Beds Pink / Purp								
Pav 1 & Pav 2:	Rosa 'Oxfordshire' (white / pinkish)	3	10	3	22	22		
	Eryngium 'Jos Eijking'	1	10	7	8	8		
	Kniphofia Little Maid (yellow)	1	10	7	18	18		
	Ceratostigma plumbaginoides	2	8	5	10	10		
	Iris BlackSwan	1	5	7	9	9		
	Salvia purpurescens	1	9	5	12	12		
	Stipa tenuissima	1	8	7	15	15		
	Calamagrostis brachytricha	1	5	7	9	9		
	Geranium Johnson's Blue	1	10	7	18	18		
	Perovskia 'Blue Spire'	2	5	5	7	7		
	Lavandula Munstead	2	10	9	23	23		
	Stachys byzantina 'Big Ears'	1	10	11	29	29		
Overlay to bed	Allium 'Purple Rain'	bulb	10	5	11	13		
Total per bed						110		

NB: Refer CDM Information inc in Hazard Mgt Record. There is a requirement to replace topsoil due to low levels of contamination by asbestos. 300mm topsoil to be replaced in all planting beds, except under the canopies of mature trees or shrubs that are to be retained. Refer Specification Q28, 30 & Q31.

REVISION	PROJECT	CLIENT	SCALE
A: First Issue: 1.11.21 B: PLANNING Issue: 16.11.21	Dolphin Square	AXA - IM	1:100 @A1
DRAWING NO.	DRAWING	DRAWN	SP
035_316	Proposed Softworks Plan - N Moroccan Garden		

e: sally@sp-la.co.uk
 t: +44 (0) 7905 960155

0 5m
 For Tree Removals Refer to Dwgs TR1 & 2 Schedules. For Tree Protection refer to Dwgs TP1
 For General Arrangement and Key, refer to Dwgs 201-219