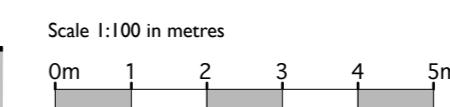
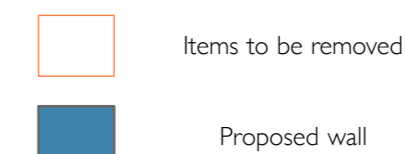
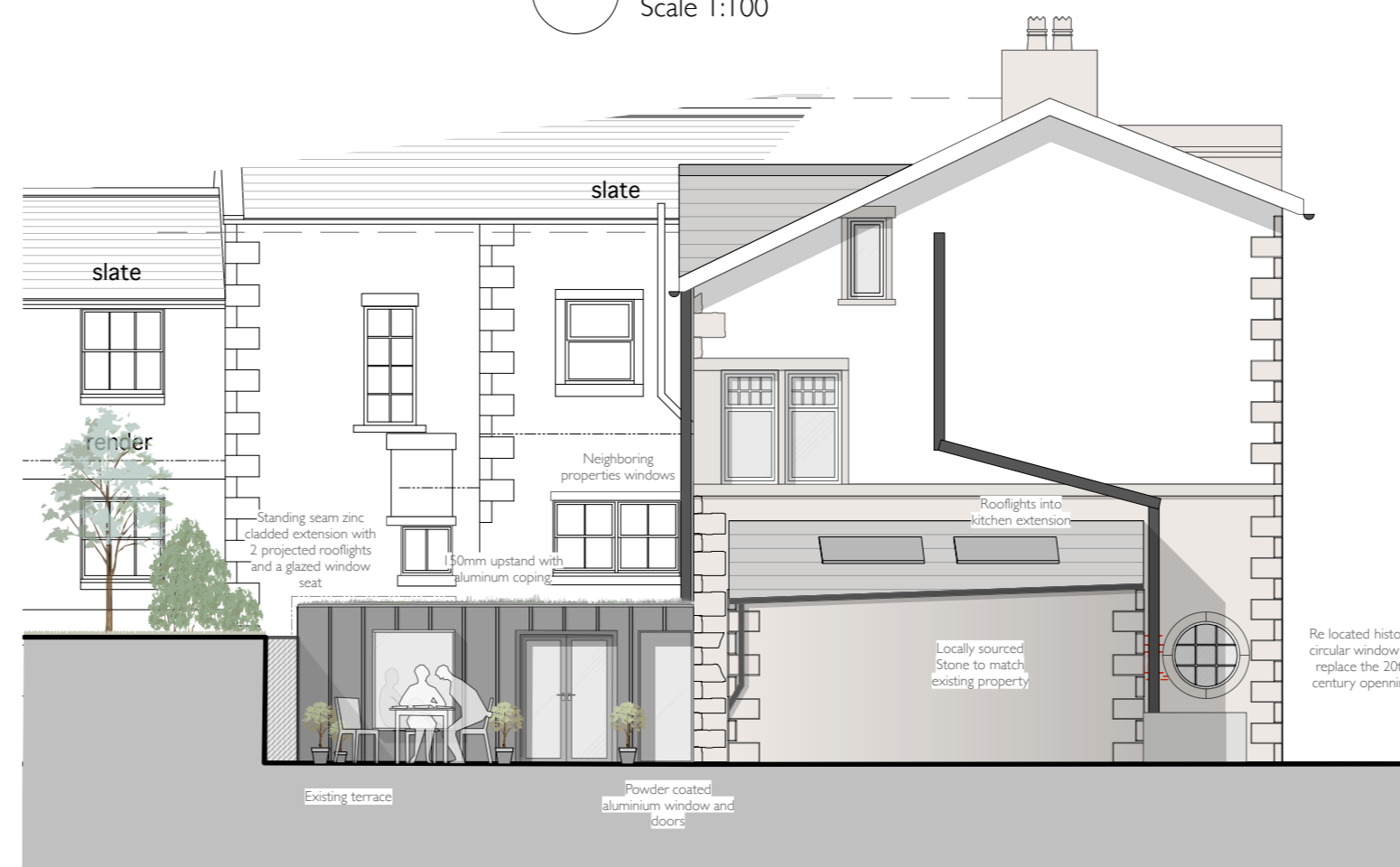


Rev.	Initial	Date	Note
E	JLL	31.03.2022	Amendments following LPA requests
D	JLL	30.03.2022	Amendments following LPA requests
C	JVW	10.03.2022	Amendments following Heritage advice
B	JLL	28.02.2022	Amendments following Heritage advice
A	JLL	09.02.2022	Amendments following Heritage advice



PLANNING DRAWINGS

project 12 High Street, Burton in Lonsdale

CONCEPT DRAWINGS

drawing title Attic and Ground Floor Scheme

drwg. no. 6050 /c/b/03 date Aug-21 rev E

scale 1:100 @ A2L drawn by JLL checked by -

MASON GILLIBRAND
ARCHITECTS

16 WILLOW MILL | FELL VIEW | CATON | LANCASTER | LA2 9RA

T: (01524) 771 377 | F: (01524) 771 330 | www.masongillibrand.com

Drawings are based on survey data and may not accurately represent what is physically present. Do not scale from this drawing. All dimensions are to be verified on site before proceeding with works. All dimensions are in millimetres unless stated otherwise. Mason Gillibrand Architects are to be notified in writing of any discrepancies immediately.

© MASON GILLIBRAND ARCHITECTS